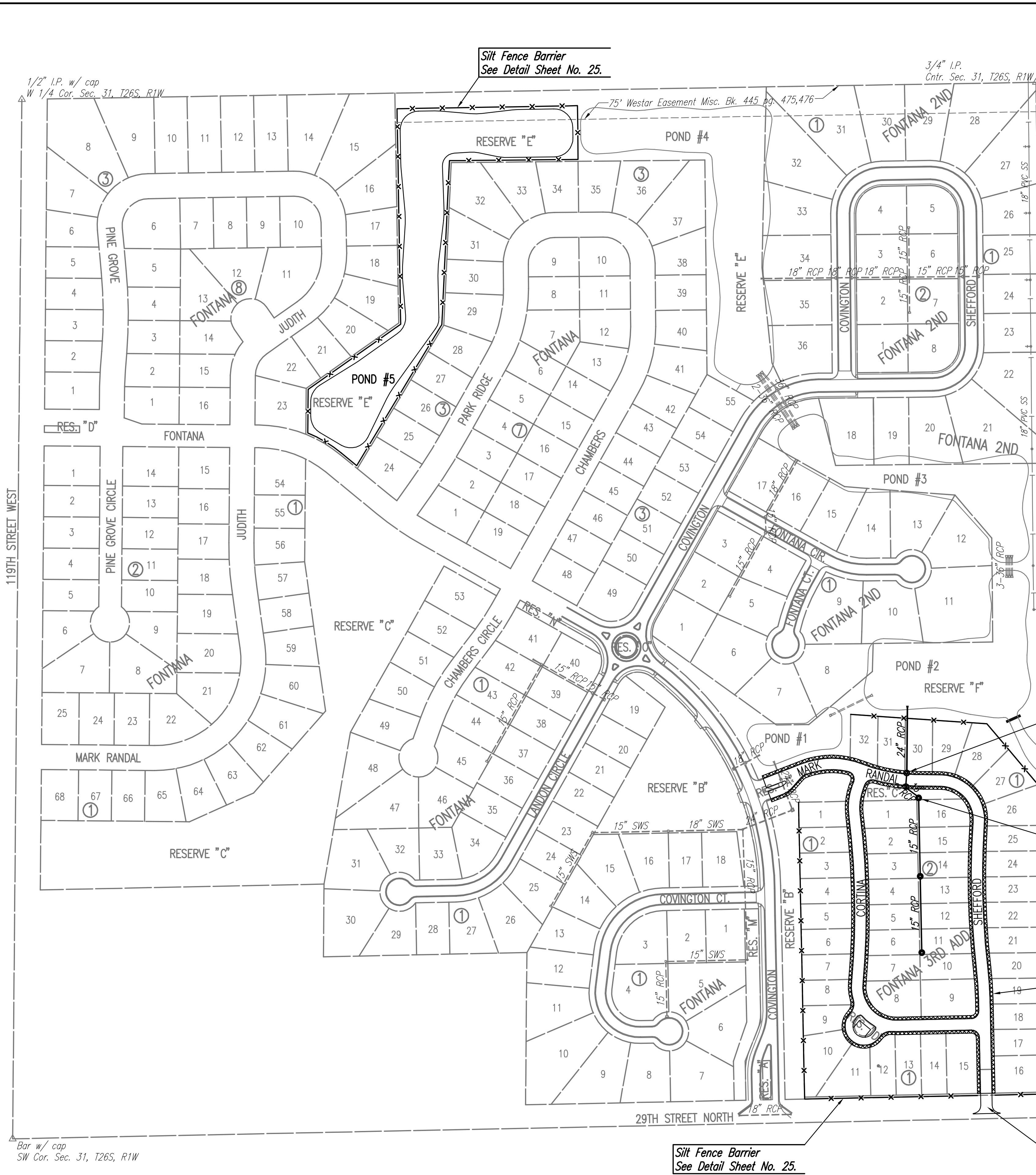


Saved: 06-05-2007 6:51:00 AM by BJS
 Plot Scale: 1:150 06-11-2007 10:45:51 AM by REJ
 J:\SENTOU\2006\06611\2007-06-05 to Wichita\Street\DWG\23-EROSION CONTROL



GENERAL NOTES

THE EROSION CONTROL DEVICES SHOWN ON THIS SHEET ARE CONSIDERED MINIMUM STANDARDS. WHENEVER SEDIMENT ENTERS THE STREETS, STORM SEWERS, DITCHES, OR PONDS, CONTRACTOR WILL INSTALL ADDITIONAL DEVICES, AS NEEDED, TO CORRECT THE PROBLEM.

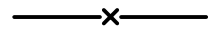



THE EROSION CONTROL DEVICES SHOWN HEREON MUST BE IN PLACE AT ALL TIMES DURING CONSTRUCTION UNTIL SUCH TIME AS THE SITE IS REESTABLISHED WITH PAVING OR GRASS. TEMPORARY OR PERMANENT SEEDING AND MULCH WILL BE INSTALLED WHEN EARTHWORK ACTIVITIES CEASE IN AN AREA FOR 14 DAYS OR MORE.

BACK OF CURB PROTECTION: AS SHOWN ON CITY STANDARD DETAILS. THESE DEVICES MUST REMAIN IN PLACE UNTIL THE AREA BETWEEN THE CURB AND RIGHT-OF-WAY LINE HAS BEEN PERMANENTLY STABILIZED.

ANY MUD INADVERTENTLY TRACKED ONTO ANY STREET WILL BE CLEANED UP BY THE CONTRACTOR, AT THE END OF EACH DAY'S WORK.

CONTRACTOR TO FURNISH A TRUCK WASH-OUT PIT TO BE PLACED AT A CONVENIENT LOCATION THAT DOES NOT CONFLICT WITH CONSTRUCTION. CONTRACTOR SHALL CLEAN OUT AND BACKFILL PIT PRIOR TO FINAL INSPECTION.

LEGEND

-  Silt Fence Barrier
-  Area Inlet Protection
-  Curb Inlet Protection
-  Back of Curb Protection

Curb Inlet Protection (Typ. of 2)
See Detail Sheet No. 27.

Area Inlet Protection (Typ. of 3)
See Detail Sheet Nos. 25 & 26.

Silt Fence Barrier
See Detail Sheet No. 25.

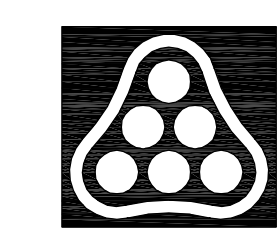
Back of Curb Protection
See Detail Sheet No. 27.

Silt Fence Barrier
See Detail Sheet No. 25.

Stabilized Construction Entrance
See Detail Sheet No. 27.

Bar w/ cap
SW Cor. Sec. 31, T26S, R1W

3/4" I.P.
S 1/4 Cor. Sec. 31, T26S, R1W



No.	Revision	By	Date
FONTANA 3RD ADDITION			
EROSION CONTROL PLAN			
JAMES L. ARNOUR, P.E. - CITY ENGINEER CITY OF WICHITA PROJECT NO. 472-84091 Professional Engineering Consultants, P.A. 303 S. TOPEKA • WICHITA, KANSAS 67202 316-262-2691 • FAX 316-262-3003			
Designed by	BDB, BMM	Job No.	35-06611-000
Drawn by	BJS, TAT, BMM	Date	November 2006
			Sheet 23 of 58