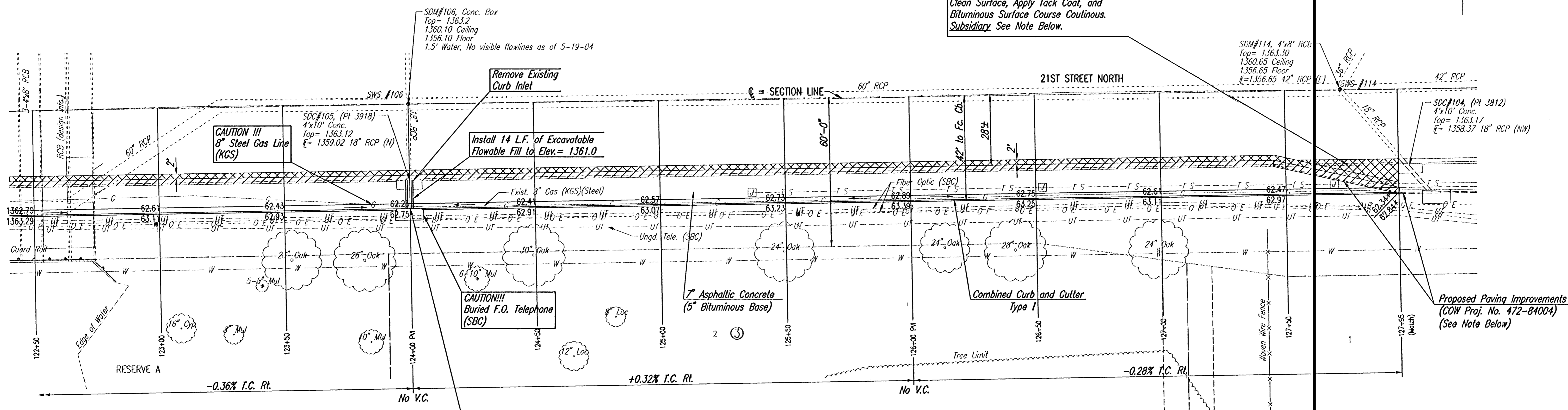


Remove Existing Asphalt to a Depth of 2"
Saw Cut 2" Deep Transverse Joint @
Sta. = 129+95 to Tie New Surface Into.
Clean Surface, Apply Tack Coat, and
Bituminous Surface Course Continous.
Subsidiary See Note Below.



-0.36% T.C. Rt.

+0.32% T.C. Rt.

-0.28% T.C. Rt.

RESERVE A

No V.C.

No V.C.

CAUTION!!!
8" Steel Gas Line
(KGS)

Install 14 L.F. of Excavatable
Flowable Fill to Elev. = 1361.0

CAUTION!!!
Buried F.O. Telephone
(SBC)

7" Asphaltic Concrete
(5" Bituminous Base)

Combined Curb and Gutter
Type I

Proposed Paving Improvements
(COW Proj. No. 472-84004)
(See Note Below)

Remove Existing Asphalt Surface
(Subsidiary to 7" A.C. Pavt.)

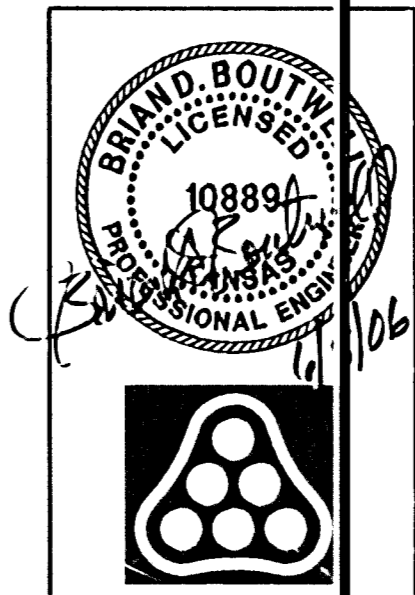
Remove Combined Curb and Gutter

* Match Existing

NOTE: Contractor will be required to confirm the status of
Project No. 472-84004 (which is under design as of Sept.
2005) and to coordinate as necessary with construction of
that project, including minor modifications to this plan when
directed by the Engineer. Additional traffic control and/or
slight adjustments to construction limits may be required.
No additional payment will be made for such work.

Sta. 124+00 Construct
Std. Type I Curb Inlet 40' Rt.
L=10'-0", W=4'-0"
Top Elev.=1362.75
E' Out (N)=1359.12
See Detail Sheet No. 12.
Install 16.5 L.F. 18" RCP (N)
Connect to Existing SWS.

Save 06-05-2006 8:28:28 AM by BJS
Plot Scale 1:20 06-05-2006 9:17:54 AM by BJS
C:\WORK\4688\03\04688-C-511727-50-127+95



No.	Revision	By	Date
OAK CREEK - PHASE 1 21ST ST. N. DECEL LANE PAVING PLAN 122+50 TO 127+95 JAMES L. ARMOUR, P.E. - CITY ENGINEER CITY OF WICHITA PROJECT NO. 472-84206 Professional Engineering Consultants, P.A. 303 S. TOPEKA • WICHITA, KANSAS 67202 316-262-2691 • FAX 316-262-3003			
Designed by	BDB, BLB	Job No.	35-04688-003
Drawn by	BJS, JMU	Date	October 2004
			Sheet 8 of 28