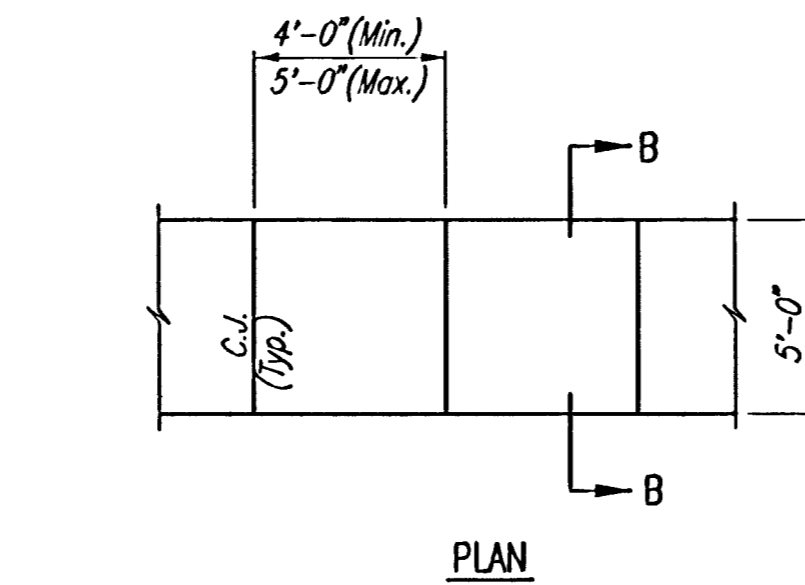
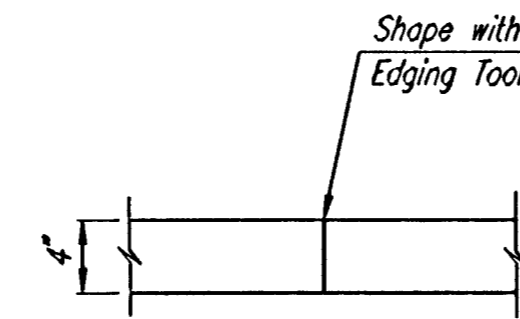


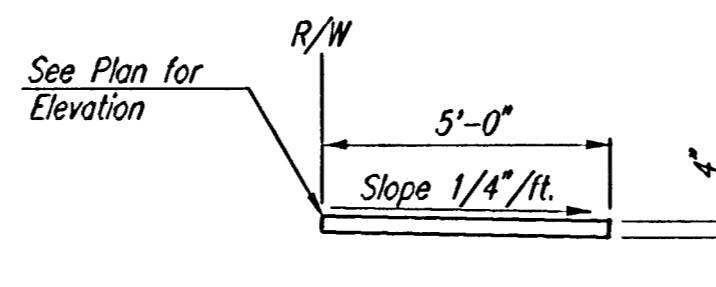
**COMPACTED FILL DETAIL**  
WHERE SIDEWALK IS CONSTRUCTED  
(See Plan Sheets for Locations)



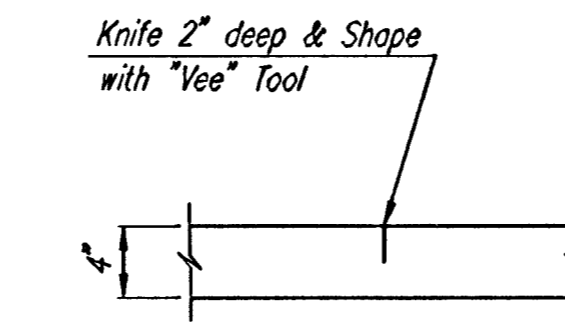
PLAN



CONSTRUCTION JOINT



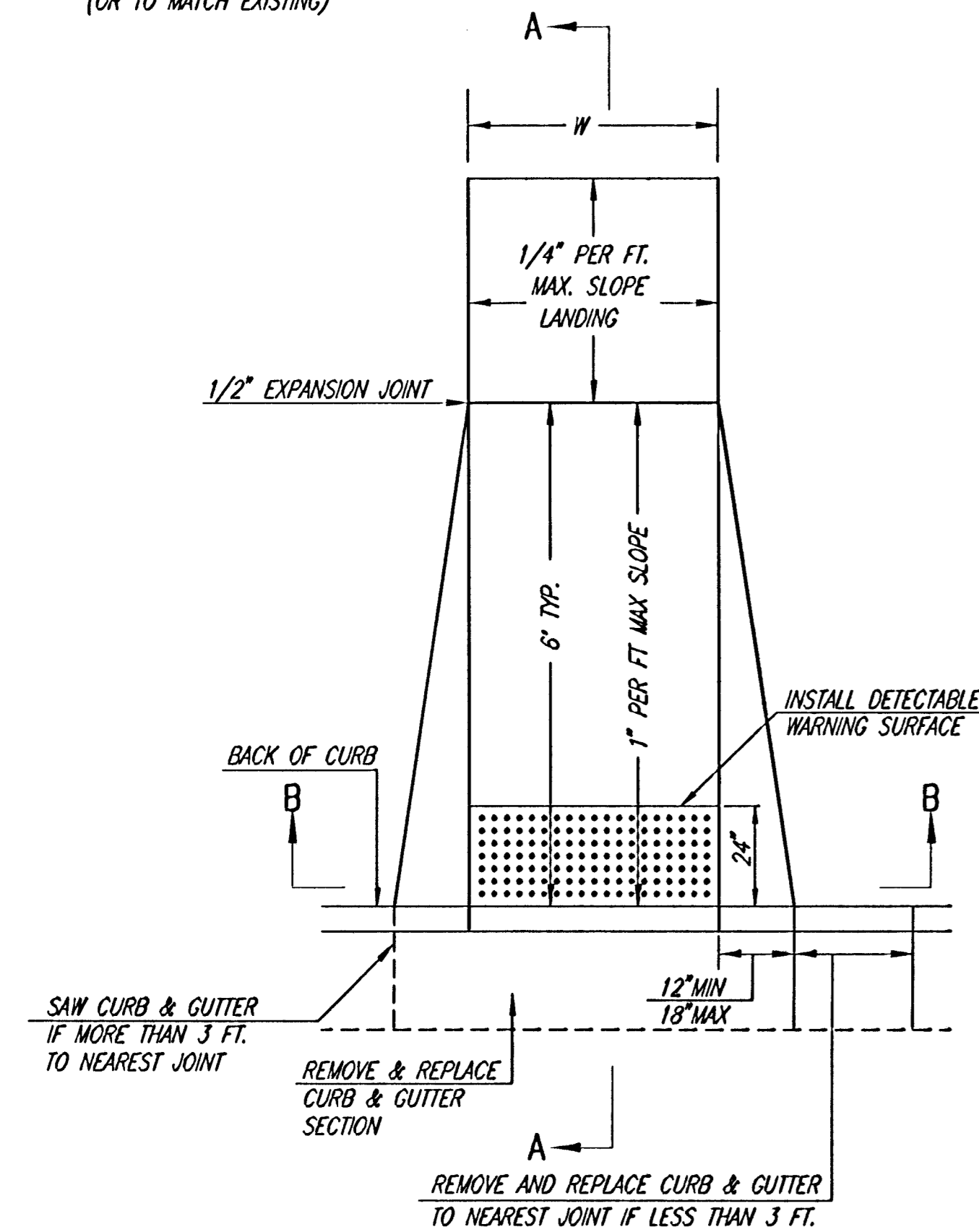
SECTION B-B



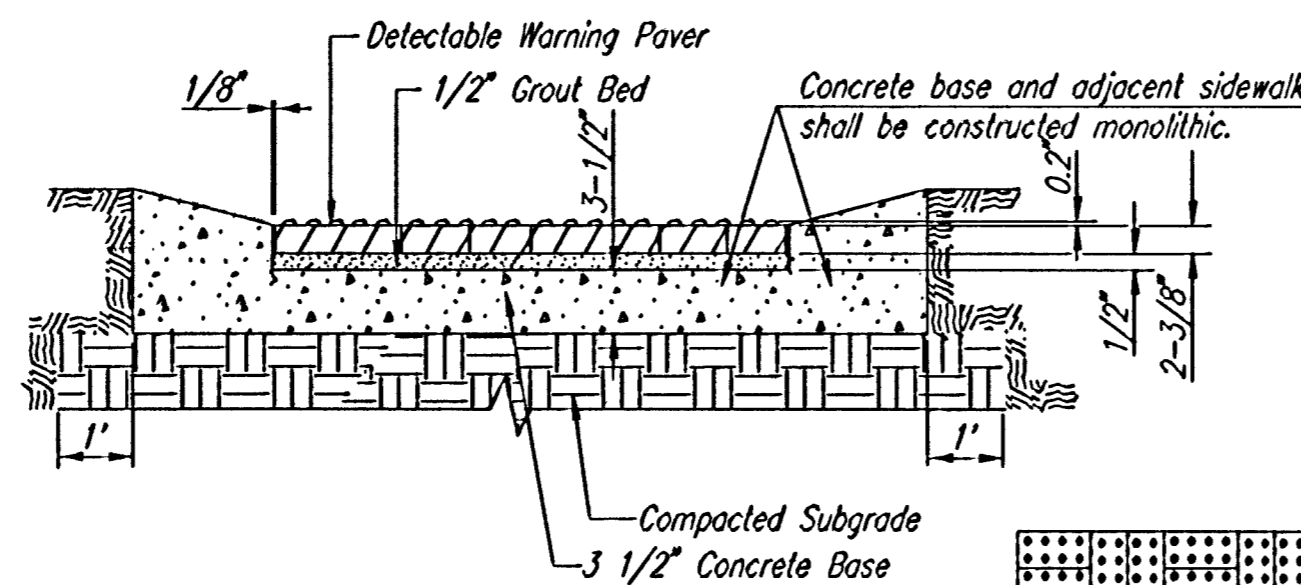
CONTRACTION JOINT

**4" WALK DETAILS**

W= 4'0" FOR STANDARD RAMP  
W= 5'0" FOR RAMPS AT SCHOOL CROSSWALKS  
(OR TO MATCH EXISTING)



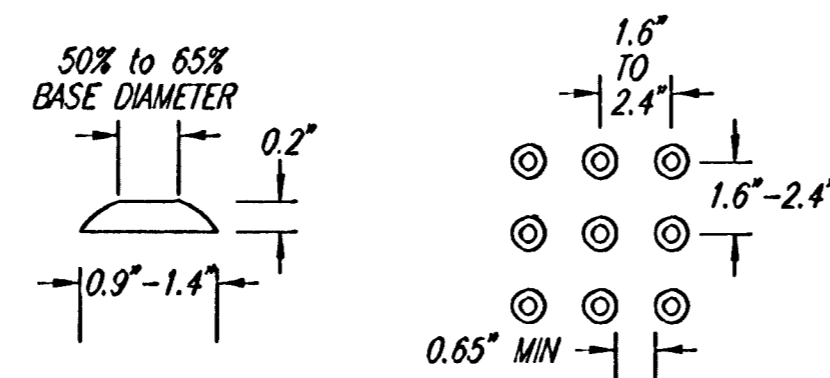
(TYPE A)  
STANDARD WHEELCHAIR RAMP  
WITH DETECTABLE WARNING  
CONSTRUCTION DETAIL FOR STREETS  
WITH COMBINED CURB & GUTTER



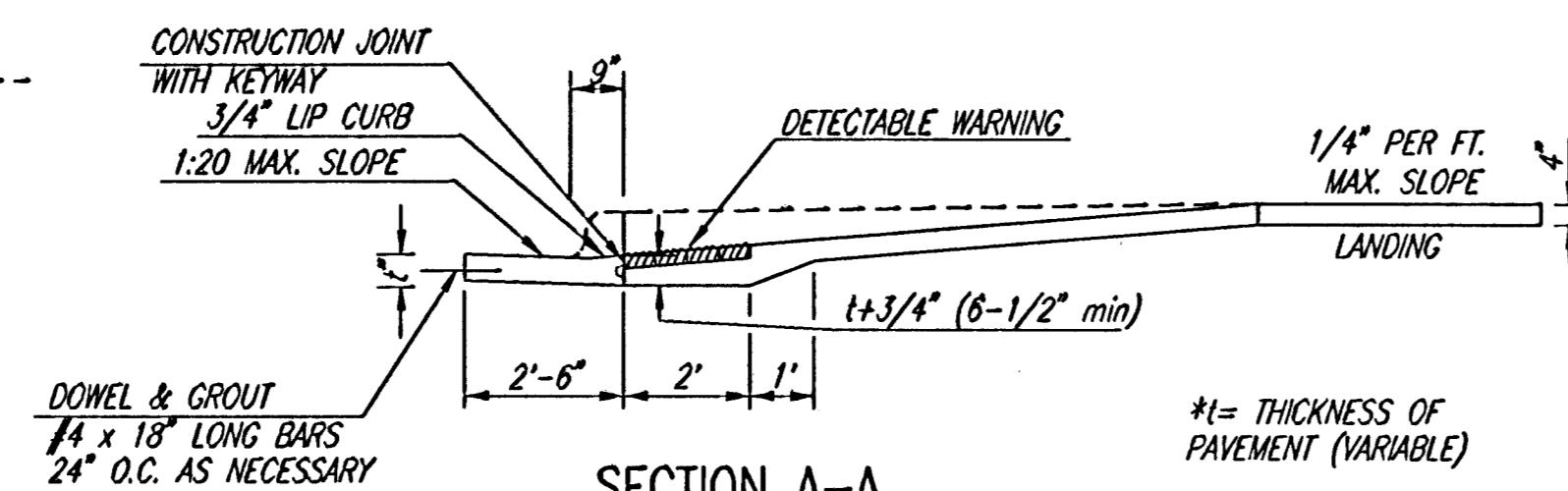
TYPICAL SECTION DETECTABLE WARNING PAVER

NOTE: RAMPS TO COMPLY WITH LATEST ADAAG GUIDELINES. PAVESTONE DETECTABLE WARNING PAVERS (OR AN APPROVED EQUAL) SHALL BE USED IN ALL WHEELCHAIR RAMPS. THE RED PAVER SHALL BE INSTALLED USING A BASKET WEAVE/PARQUET PATTERN. OTHER PATTERNS MAY BE USED WITH APPROVAL OF ENGINEER. SAND FILL JOINTS. ALIGN DOMES IN THE DIRECTION OF PEDESTRIAN TRAVEL.

SECTION B-B



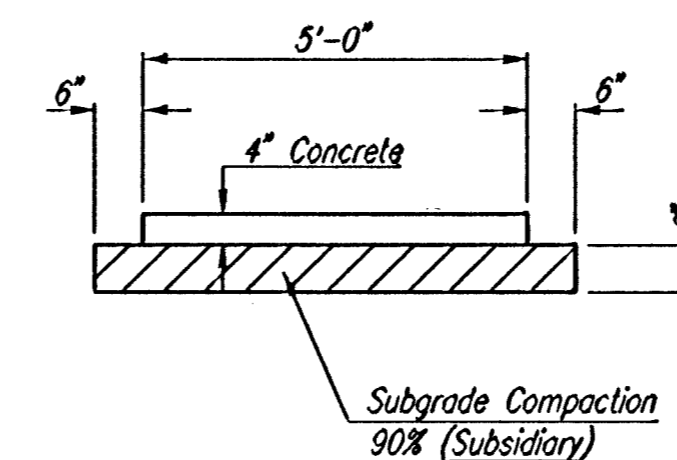
DOMES DETAIL



TYPICAL WHEELCHAIR RAMP DETAILS

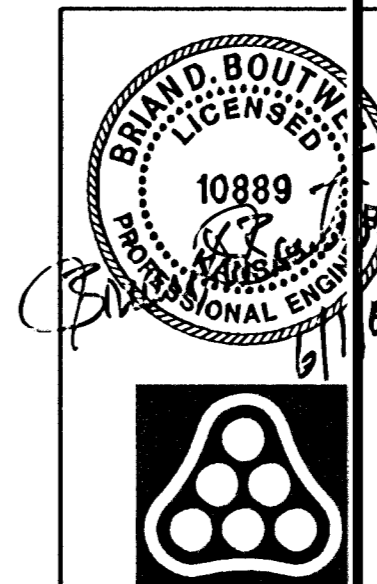
\*t= THICKNESS OF PAVEMENT (VARIABLE)

AUGUST 4, 2003



TYPICAL SIDEWALK SECTION

Save: 05-24-2006 8:10:08 AM by BJS  
Plot Scale: 1:10 05-01-2006 6:41:04 AM by BJS  
C:\DATA\4488\1001\4488-1001.dwg



No.	Revision	By	Date
	OAK CREEK-PHASE 1 21ST ST. N. DECEL LANE		
<b>MISCELLANEOUS PAVING DETAILS</b>			
JAMES L. ARMOUR, P.E. - CITY ENGINEER CITY OF WICHITA PROJECT NO. 472-84206			
Professional Engineering Consultants, P.A. 303 S. TOPEKA • WICHITA, KANSAS 67202 316-262-2691 • FAX 316-262-3003			
Designed by	BDB, BLB	Job No.	35-04688-003
Drawn by	BJS, JMU	Date	January 2005
			Sheet 11 of 28