

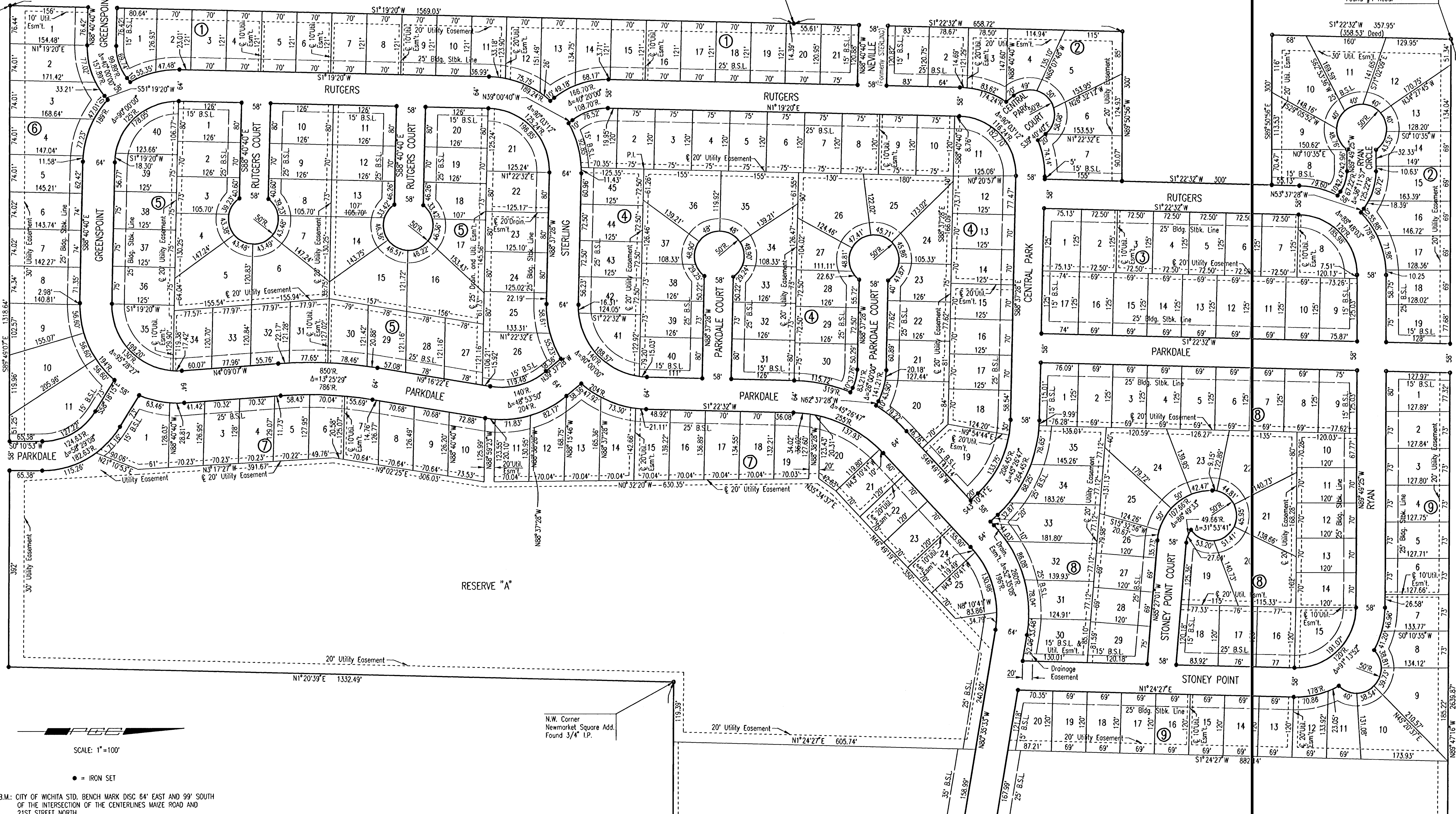
EVERGREEN

AN ADDITION TO WICHITA, SEDGWICK COUNTY, KANSAS

N.W. Corner, S.E. 1/4
Sec. 6, T27S, R1W
of the 6th P.M.
Found 3/4" Iron Pipe

N.W. Corner, S. 1/2, N.E. 1/4
Sec. 6, T27S, R1W
of the 6th P.M.
Found #4 Rebar

Found 1/2" I.P.
0.18' West of Corner



SCALE: 1"=100'

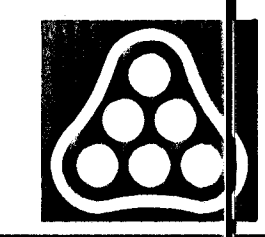
● = IRON SET

B.M.: CITY OF WICHITA STD. BENCH MARK DISC 64' EAST AND 99' SOUTH
OF THE INTERSECTION OF THE CENTERLINES MAIZE ROAD AND
21ST STREET NORTH.
ELEV.=164.3 CITY DATUM
ELEV.=1351.7 M.S.L.

ESTABLISHED MINIMUM PAD (LOWEST OPENING) AS FOLLOWS:
LOTS 1 THROUGH 26, BLOCK 7, = 165.6 CITY DATUM = 1353.0 M.S.L.

N.W. Corner
Newmarket Square Add.
Found 3/4" I.P.

DSNR: BER OPER: SAW SCALE: 1"=100.00
C:\2004\04276\Plat1 02-17-2005 08:28:18 am



| No. | Revision | By | Date |
|--|---|---------|---------------|
| | NEWMARKET SQUARE CENTRAL PARK WIDENING | | |
| PLAT (WEST PORTION) | | | |
| JAMES L. ARMOUR, P.E., ACTING CITY ENGINEER CITY OF WICHITA PROJECT NO. 472-84048 | | | |
| Professional Engineering Consultants, P.A. | | | |
| 303 S. TOPEKA • WICHITA, KANSAS 67202 316-262-2691 • FAX 316-262-3003 | | | |
| Designed by | BER | Job No. | 35-04276-0042 |
| Drawn by | SAW | Date | JULY 2004 |
| | | | Sht. 3 of 18 |