

DSNR: BER OPER: SAW SCALE: 1"=40.00
 J:\SCENTOUT\2004\04276\2005-02-16 to City\DWG\09-Marking Plan 02-17-2005 08:34:45 am

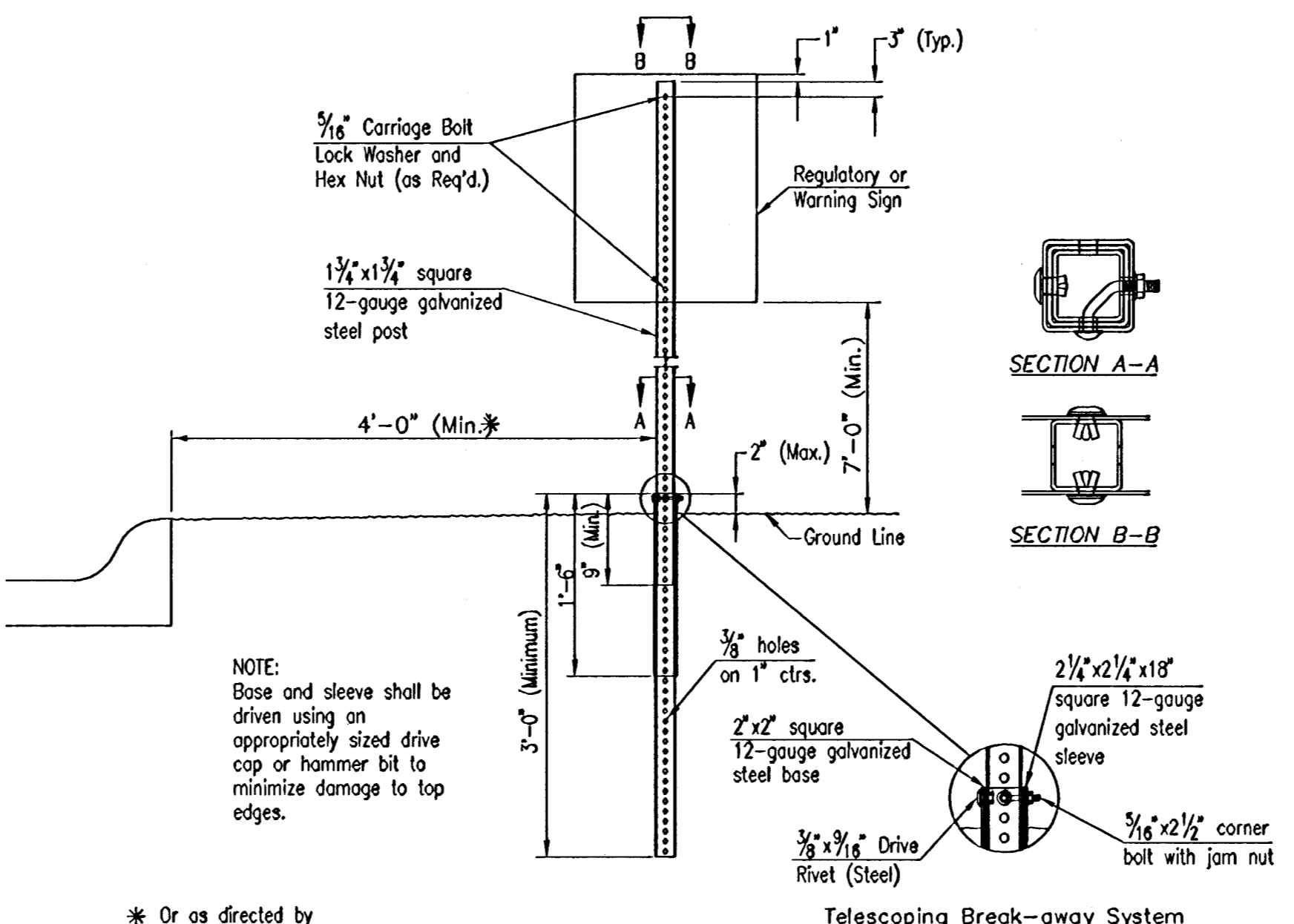
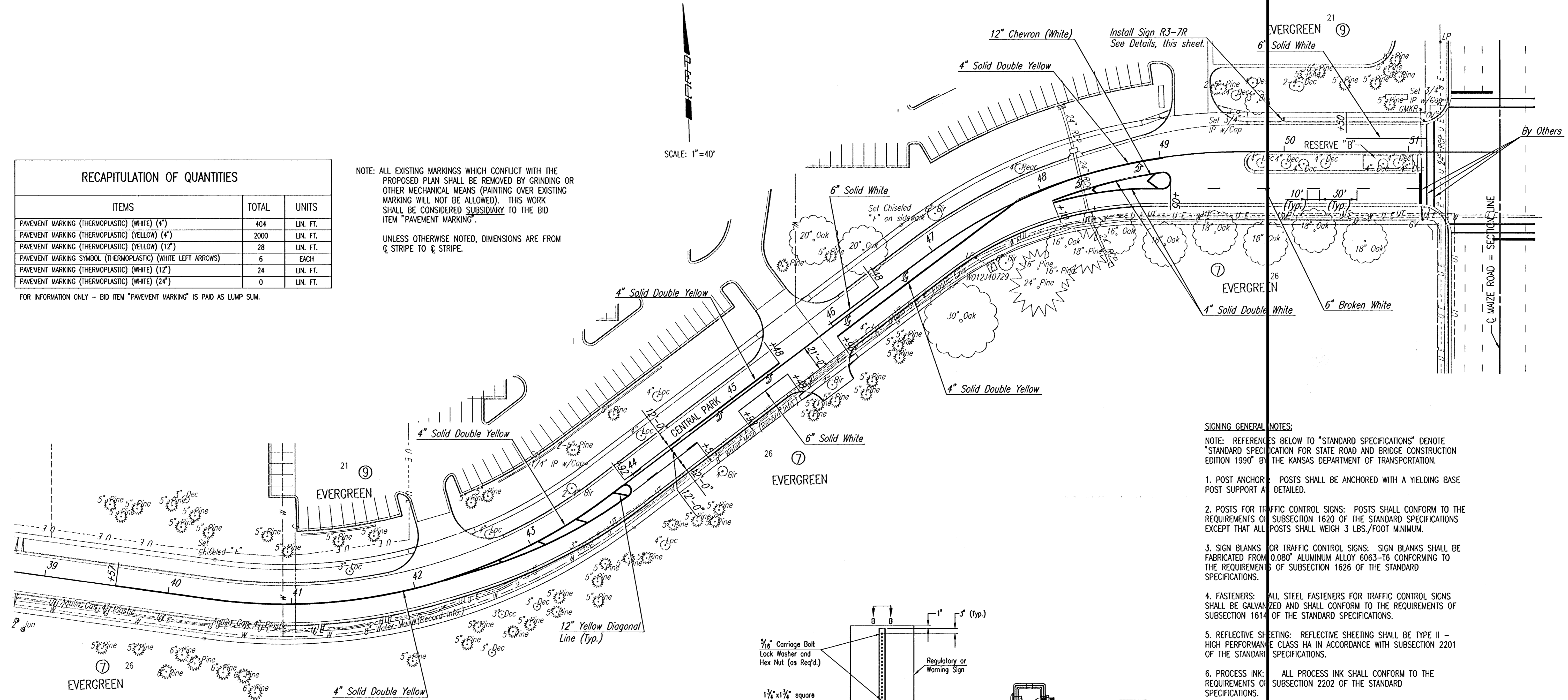
RECAPITULATION OF QUANTITIES		
ITEMS	TOTAL	UNITS
PAVEMENT MARKING (THERMOPLASTIC) (WHITE) (4")	404	LIN. FT.
PAVEMENT MARKING (THERMOPLASTIC) (YELLOW) (4")	2000	LIN. FT.
PAVEMENT MARKING (THERMOPLASTIC) (YELLOW) (12")	28	LIN. FT.
PAVEMENT MARKING SYMBOL (THERMOPLASTIC) (WHITE LEFT ARROWS)	6	EACH
PAVEMENT MARKING (THERMOPLASTIC) (WHITE) (12")	24	LIN. FT.
PAVEMENT MARKING (THERMOPLASTIC) (WHITE) (24")	0	LIN. FT.

FOR INFORMATION ONLY - BID ITEM "PAVEMENT MARKING" IS PAID AS LUMP SUM.

NOTE: ALL EXISTING MARKINGS WHICH CONFLICT WITH THE PROPOSED PLAN SHALL BE REMOVED BY GRINDING OR OTHER MECHANICAL MEANS (PAINTING OVER EXISTING MARKING WILL NOT BE ALLOWED). THIS WORK SHALL BE CONSIDERED SUBSIDIARY TO THE BID ITEM "PAVEMENT MARKING".

UNLESS OTHERWISE NOTED, DIMENSIONS ARE FROM C STRIPE TO C STRIPE.

SCALE: 1"=40'



NOTE: Base and sleeve shall be driven using an appropriately sized drive cap or hammer bit to minimize damage to top edges.

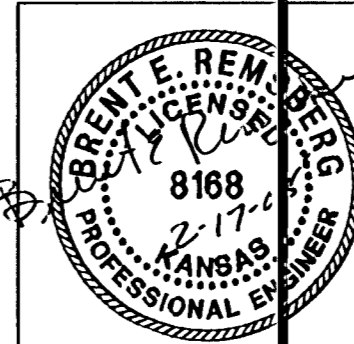
* Or as directed by the Engineer

TYPICAL TRAFFIC CONTROL SIGN INSTALLATION CURB AND GUTTER SECTION

SIGNING GENERAL NOTES:

NOTE: REFERENCES BELOW TO "STANDARD SPECIFICATIONS" DENOTE "STANDARD SPECIFICATION FOR STATE ROAD AND BRIDGE CONSTRUCTION EDITION 1990" BY THE KANSAS DEPARTMENT OF TRANSPORTATION.

- POST ANCHORS: POSTS SHALL BE ANCHORED WITH A YIELDING BASE POST SUPPORT AS DETAILED.
- POSTS FOR TRAFFIC CONTROL SIGNS: POSTS SHALL CONFORM TO THE REQUIREMENTS OF SUBSECTION 1620 OF THE STANDARD SPECIFICATIONS EXCEPT THAT ALL POSTS SHALL WEIGH 3 LBS./FOOT MINIMUM.
- SIGN BLANKS FOR TRAFFIC CONTROL SIGNS: SIGN BLANKS SHALL BE FABRICATED FROM 0.080" ALUMINUM ALLOY 6063-T6 CONFORMING TO THE REQUIREMENTS OF SUBSECTION 1626 OF THE STANDARD SPECIFICATIONS.
- FASTENERS: ALL STEEL FASTENERS FOR TRAFFIC CONTROL SIGNS SHALL BE GALVANIZED AND SHALL CONFORM TO THE REQUIREMENTS OF SUBSECTION 1614 OF THE STANDARD SPECIFICATIONS.
- REFLECTIVE SHEETING: REFLECTIVE SHEETING SHALL BE TYPE II - HIGH PERFORMANCE CLASS HA IN ACCORDANCE WITH SUBSECTION 2201 OF THE STANDARD SPECIFICATIONS.
- PROCESS INK: ALL PROCESS INK SHALL CONFORM TO THE REQUIREMENTS OF SUBSECTION 2202 OF THE STANDARD SPECIFICATIONS.
- DETAILS: REGULATORY AND WARNING SIGNS SHALL CONFORM TO THE DETAILS IN "STANDARD HIGHWAY SIGNS", FHWA, 1979.
- PERMANENT TRAFFIC CONTROL SIGNS SHALL BE MEASURED AND PAID FOR AT THE UNIT PRICE BID PER EACH "SIGN ASSEMBLY". THE PAYMENT AS SET FORTH ABOVE SHALL BE CONSIDERED FULL COMPENSATION FOR ALL EXCAVATION, BACKFILLING, POSTS, ANCHORS, FASTENERS, MATERIALS, LABOR, TOOLS AND INCIDENTALS NECESSARY TO COMPLETE THIS WORK.



Revision		
No.	By	Date
NEWMARKET SQUARE CENTRAL PARK WIDENING MARKING PLAN JAMES L. ARMOUR, P.E., ACTING CITY ENGINEER CITY OF WICHITA PROJECT NO. 472-84048 Professional Engineering Consultants, P.A. 303 S. TOPICKA • WICHITA, KANSAS 67202 316-262-2691 • FAX 316-262-3003		
Designed by	BER	Job No. 35-04276-0042
Drawn by	SAW	Date JULY 2004