

SHEET NO.	TOTAL SHEETS
1	19

CITY OF WICHITA, KANSAS

MICHAEL E. LINDEBAK, P.E., CITY ENGINEER

STREET IMPROVEMENTS

GROVE COURT - FROM WEST SIDE OF GROVE TO AND INCLUDING CUL-DE-SAC

IN
PINE BAY ESTATES
CITY OF WICHITA PROJECT NO. 472-83617
OCA NO. 765753

INDEX OF SHEETS

1. TITLE SHEET
2. PLAT
3. TYPICAL SECTION
- 4.-5. PAVING PLANS
6. PLAN AND PROFILE - SWS LINE NO. 1
7. MISCELLANEOUS PAVING DETAILS
8. STD. TYPE 1A CURB INLET DETAILS
9. STANDARD/SPECIAL SHALLOW MANHOLES TYPE A & B
- 10.-13. SEDIMENT AND EROSION CONTROL DETAILS
14. SIGNING DETAILS
15. FOUR CORNER PLAN
- 16.-19. CROSS SECTIONS

PROJECT SURVEY CONTROL

B.M. - CITY OF WICHITA DISC, 59' E. AND 44.5' S. OF C 63RD STREET SOUTH AND HYDRAULIC ELEV.=73.60 CITY DATUM

GENERAL NOTES

UNDERGROUND UTILITY SERVICE LINES AND OVERHEAD UTILITY POLE LINES ARE TO BE ADJUSTED AS NECESSARY BY OTHERS PRIOR TO CONSTRUCTION UNLESS THE PLANS SPECIFICALLY CALL FOR THEIR ADJUSTMENT BY THE CONTRACTOR. EXISTING UTILITIES AND THEIR LOCATION, AS SHOWN ON THE PLANS, REPRESENT THE BEST INFORMATION OBTAINABLE FOR DESIGN. LOCATION INFORMATION HAS BEEN OBTAINED FROM THE VARIOUS UTILITY COMPANIES AND IS EITHER FROM COMPANY RECORD DRAWINGS OR COMPANY PROVIDED FIELD LOCATIONS. THE CONTRACTOR WILL BE REQUIRED TO WORK AROUND EXISTING UTILITIES WITHIN THE RIGHT-OF-WAY WHICH DO NOT CONFLICT WITH PROPOSED CONSTRUCTION.

TREES AND SHRUBS IN PUBLIC RIGHT-OF-WAY WHICH ARE IN DIRECT CONFLICT WITH PROPOSED NEW CONSTRUCTION SHALL BE REMOVED BY THE CONTRACTOR WITH THE ENGINEER'S APPROVAL. TREES AND SHRUBS WHICH ARE NOT IN DIRECT CONFLICT WITH PROPOSED NEW CONSTRUCTION SHALL BE SAVED AND PROTECTED FROM DAMAGE.

RUBBLE FROM THE REMOVAL OF MISCELLANEOUS STRUCTURES SHALL BE DISPOSED OF ON SITES TO BE PROVIDED BY THE CONTRACTOR AND APPROVED AS NOTED BELOW.

ALL DISPOSAL SITES MUST BE APPROVED BY THE KANSAS DEPARTMENT OF HEALTH AND ENVIRONMENT. MATERIAL EITHER STOCKPILED OR DISPOSED OF IN A FLOOD PLAIN WOULD REQUIRE A KANSAS STATE BOARD OF AGRICULTURE PERMIT. ANY MATERIAL DUMPED IN WATERS OF THE UNITED STATES OR WETLANDS IS SUBJECT TO U.S. CORPS OF ENGINEERS PERMITTING REGULATIONS. ANY MATERIAL BURIED OR STOCKPILED BEYOND APPROVED CONSTRUCTION LIMITS WOULD REQUIRE ADDITIONAL ARCHEOLOGICAL INVESTIGATIONS UNLESS BURIED IN A PREVIOUSLY APPROVED BURROW LOCATION.

CONTRACTOR SHALL SATISFY HIMSELF OF SURFACE AND SUBSURFACE CONDITIONS PRIOR TO BIDDING.

CONTRACTOR SHALL PROVIDE A MINIMUM FORTY-EIGHT (48) HOUR ADVANCE NOTICE (EXCLUDING WEEKENDS AND HOLIDAYS) PRIOR TO BEGINNING ANY EXCAVATION, TO KANSAS ONE-CALL SYSTEM, A UTILITY LOCATION SERVICE, AT (316) 687-2470 TO REQUEST THE FOLLOWING UTILITY COMPANIES TO LOCATE ALL EXISTING LINES WITHIN THE PROJECT AREA: K.G.S. GAS, PEOPLES NATURAL GAS, WESTAR ENERGY, SOUTHWESTERN BELL TELEPHONE, COX COMMUNICATIONS, CITY OF WICHITA SEWER MAINTENANCE AND CITY OF WICHITA WATER DEPARTMENT.

THE CONTRACTOR SHALL BE RESPONSIBLE FOR PRESERVING PROPERTY IRONS. THE CONTRACTOR WILL BE REQUIRED TO RE-ESTABLISH ANY PROPERTY IRONS WHICH ARE DAMAGED OR DESTROYED BY HIS CONSTRUCTION OPERATIONS. SUCH IRONS SHALL BE RE-ESTABLISHED BY A LICENSED LAND SURVEYOR IN ACCORDANCE WITH STATE LAWS.

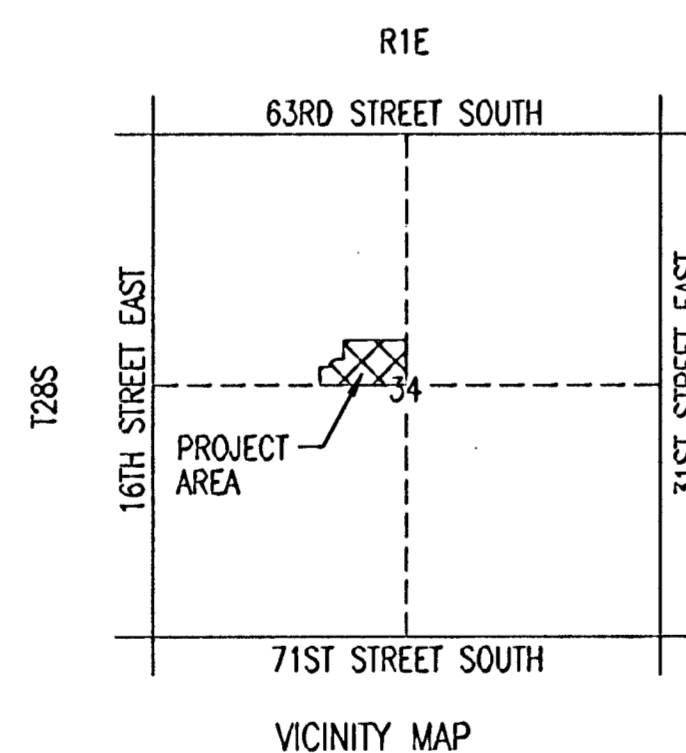
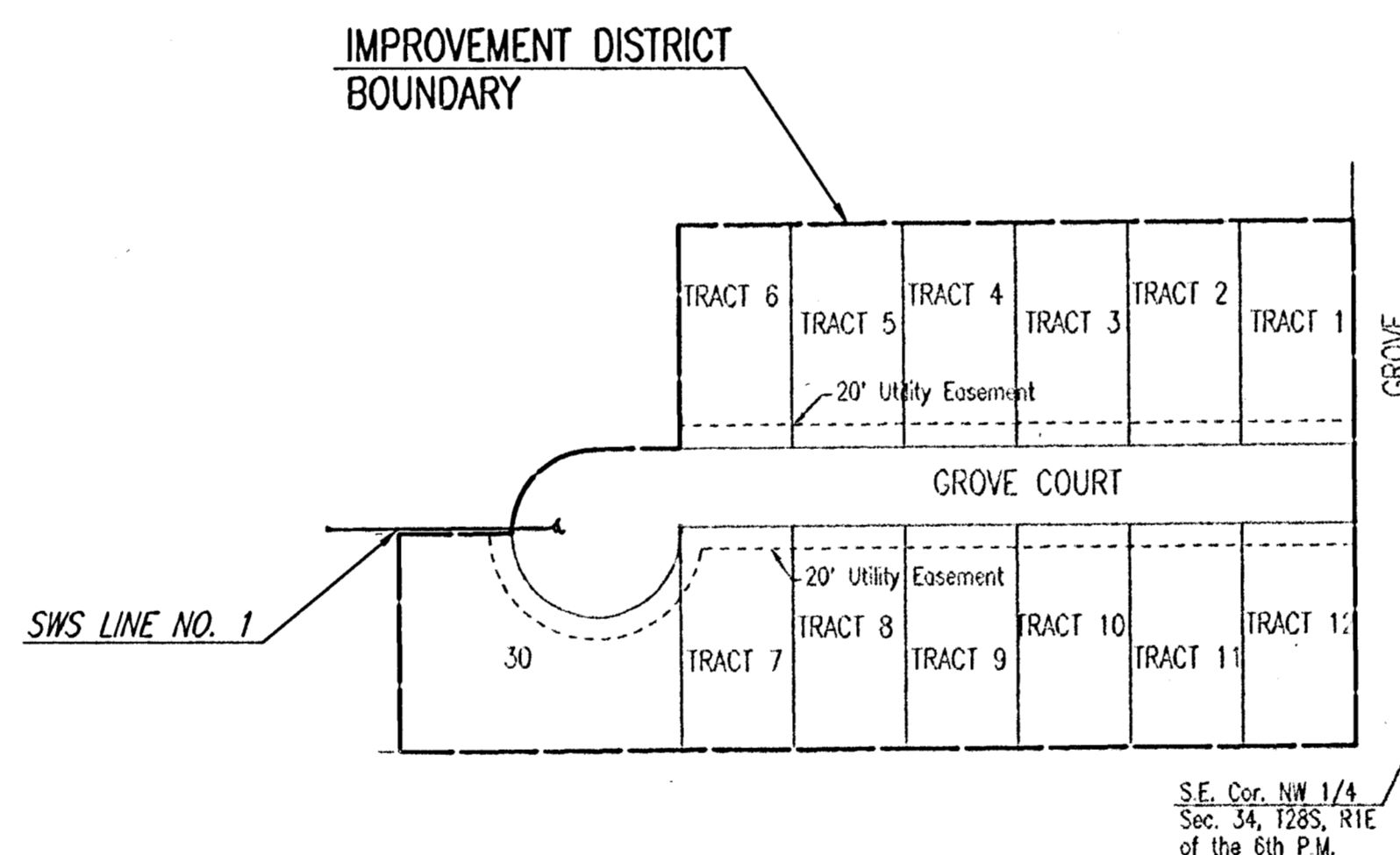
THE WATER DEPARTMENT SHALL FIELD LOCATE WATER VALVES ONE TIME DURING CONSTRUCTION WHEN REQUESTED BY THE CONTRACTOR. IT SHALL BE THE CONTRACTOR'S RESPONSIBILITY TO PRESERVE SUCH FIELD LOCATIONS DURING THE CONSTRUCTION PROCESS. WATER VALVES, WATER VALVE BOXES OR FIRE HYDRANTS DAMAGED DURING CONSTRUCTION SHALL BE REPAIRED BY THE CONTRACTOR AT HIS OWN EXPENSE.

THE CONTRACTOR SHALL ADJUST WATER VALVE BOXES AS DIRECTED BY THE ENGINEER. THIS WORK TO BE SUBSIDIARY TO OTHER BID ITEMS.

INLET HOOKUPS SHALL BE BID PER EACH REGARDLESS OF INLET SIZE.

THIS PROJECT DOES NOT INCLUDE ANY PROVISIONS FOR CONSTRUCTION OF DRIVEWAYS.

PROJECT SEEDING: THE CONTRACTOR SHALL SEED, FERTILIZE, AND MULCH ALL AREAS DISTURBED BY HIS CONSTRUCTION OPERATIONS IN ACCORDANCE WITH THE STANDARD SPECIFICATIONS. SEEDING SHALL BE ANNUAL RYE APPLIED AT THE RATE OF 4 LBS. PER 1000 SQ. FT. AND K-31 FESCUE APPLIED AT THE RATE OF 8 LBS. PER 1000 SQ. FT. FERTILIZER SHALL BE 12-24-12 APPLIED AT THE RATE OF 8 LBS. PER 1000 SQ. FT. MULCH SHALL BE PRAIRIE HAY APPLIED AT THE RATE OF 90 LBS. PER 1000 SQ. FT. THIS WORK SHALL BE PAID FOR AT THE CONTACT PRICE BID PER LUMP SUM FOR "PROJECT SEEDING".



EARTHWORK

EXCAVATION 1686 CU. YDS.
COMPACTED FILL 221 CU. YDS.
LOOSE FILL 903 CU. YDS.
PROJECT LENGTH = 725.41 LIN. FT.

NOTE: ALL EXCESS EXCAVATED MATERIAL SHALL BE DISPOSED OF ON-SITE AS DIRECTED BY THE OWNER.

NO.	STREET AND STATION	FROM C	DESCRIPTION	ELEVATION
1	GROVE CT. STA. 10+25	14' LT.	TOP OF CURB AT P.T. CURB AND GUTTER ON NORTH SIDE OF GROVE AT CENTER OF CUL-DE-SAC.	
2	GROVE CT. STA. 17+00	14' LT.	TOP OF CURB AT NE CORNER GROVE AND GROVE CT.	
3				
4				

THE COST OF THE BENCH MARK DISC, INCLUDING INSTALLATION, SHALL BE INCIDENTAL TO THE CURB.

AUGUST 2002

PLANS PREPARED BY

PROFESSIONAL ENGINEERING CONSULTANTS, P.A.
ENGINEERS
WICHITA, KANSAS

