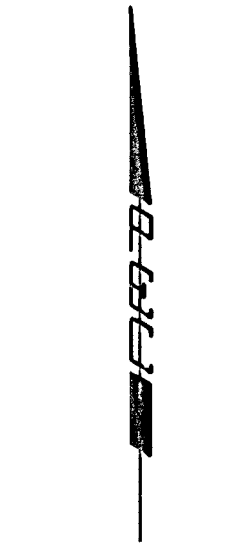
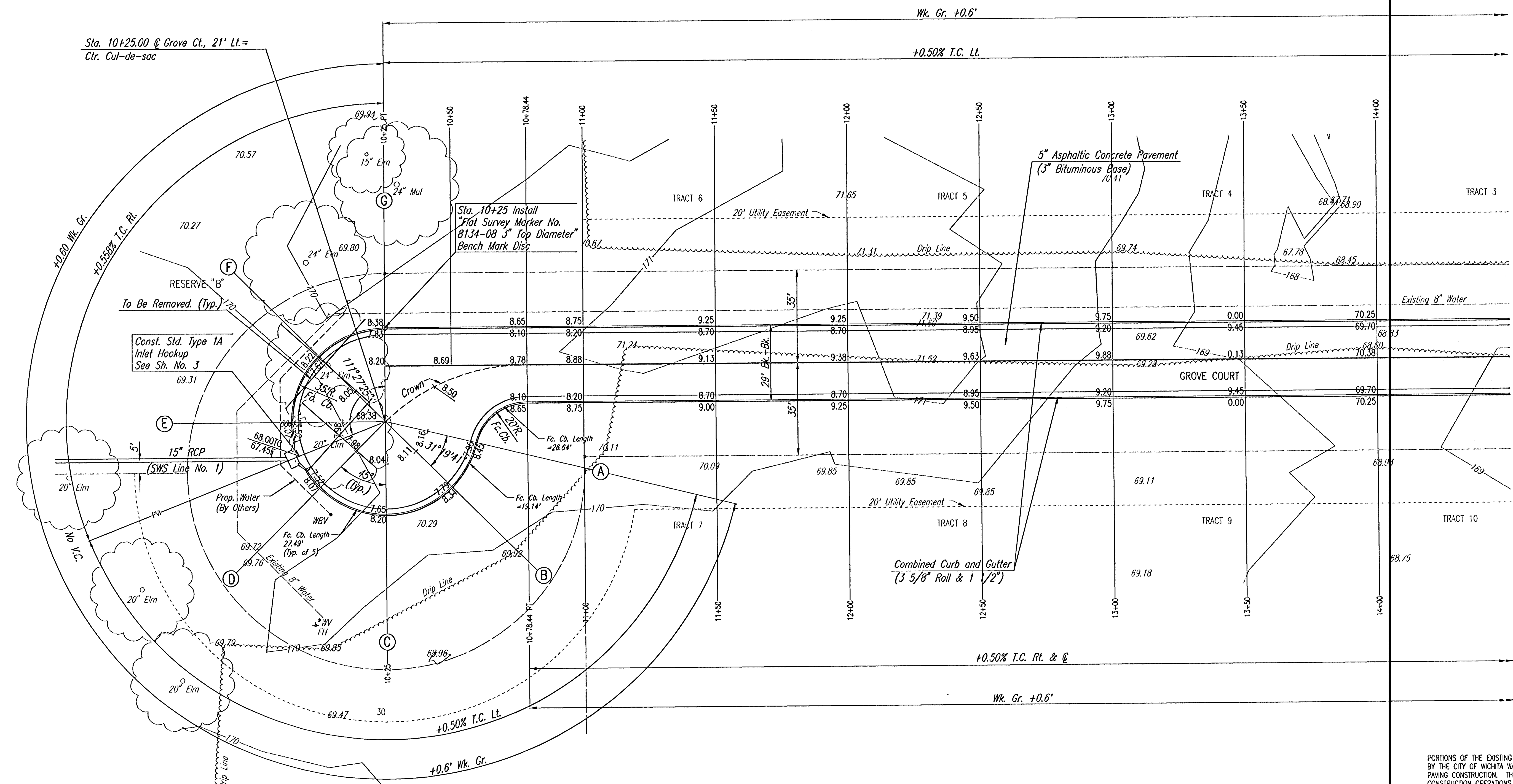


PROJECT NO.	SHEET NO.	TOTAL SHEETS
472-83617	4	19



SCALE: 1"=20'



PORTIONS OF THE EXISTING WATER MAIN ARE TO BE ADJUSTED/RELOCATED BY THE CITY OF WICHITA WATER DEPARTMENT PRIOR TO THE START OF PAVING CONSTRUCTION. THE PAVING CONTRACTOR SHALL COORDINATE HIS CONSTRUCTION OPERATIONS WITH THE CITY OF WICHITA WATER DEPARTMENT, MR. BILL PERKINS AT 268-4555.

NOTE: THIS STREET TO BE CONSTRUCTED WITH ROLL-TYPE CURB. TOP OF CURB ELEVATIONS GIVEN ARE FOR FULL HEIGHT CURB.

PINE BAY ESTATES

GROVE COURT

STA. 10+25.00 TO STA. 14+00.00

Professional Engineering Consultants, P.A.
 303 S. TOPEKA • WICHITA, KANSAS 67202
 316-262-2691 • FAX 316-262-3003

Designed by BER	Checked by
Drawn by DEP	Date AUGUST 2002 Job No. 02331

DSNR: DEP OPER: DEP SCALE: 1"=20.00
 C:\2002\02331\GROVES1_09-11-2002_08:52:30.am