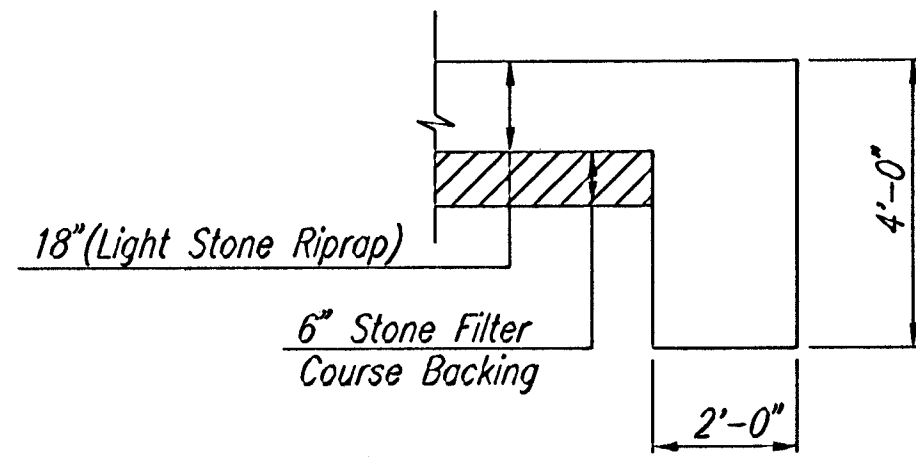


DSNR-DEP-OPER-DEP SCALE: 1"=20.00  
 C:\2002\02331\SWS\_09-11-2002\_08:51:05.dwg



TYPICAL SECTION THRU TOEWALL  
 NO SCALE

NOTES

1. ALL RIPRAP FOR THIS PROJECT SHALL BE NATURAL STONE OR BROKEN CONCRETE IF BELOW STATIC POOL ELEV. NEITHER FABRIC ENVELOPE, NOR PREMIXED DRY PACKAGED CONCRETE BAG ALTERNATES WILL BE ALLOWED.
2. TOEWALLS SHALL BE INSTALLED ALONG ALL EDGES OF STONE RIPRAP.
3. GROUTING OF THE SURFACE OF THE RIPRAP SHALL NOT BE PERFORMED. GROUTING OF THE TOEWALLS SHALL BE PERFORMED PER CITY SPECIFICATIONS.

| POINT | NORTH      | EAST       |
|-------|------------|------------|
| 1005  | 1,189.2615 | 6,904.8851 |
| 1007  | 1,188.6531 | 6,779.8867 |
| 1008  | 1,188.1698 | 6,699.8881 |

1008 = COORDINATE POINT NO.

Static Pool=158.8± C.O.W.  
 DWS100 (Internal Drainage)=159.8 C.O.W.  
 DWS 25 (Floodway)=161.1 C.O.W.

Sta. 10+00.0, SWS Line No. 1  
 Install 80.0 L.F. 15" RCP (W)  
 (Including End Section)  
 I<sub>f</sub> = 154.50

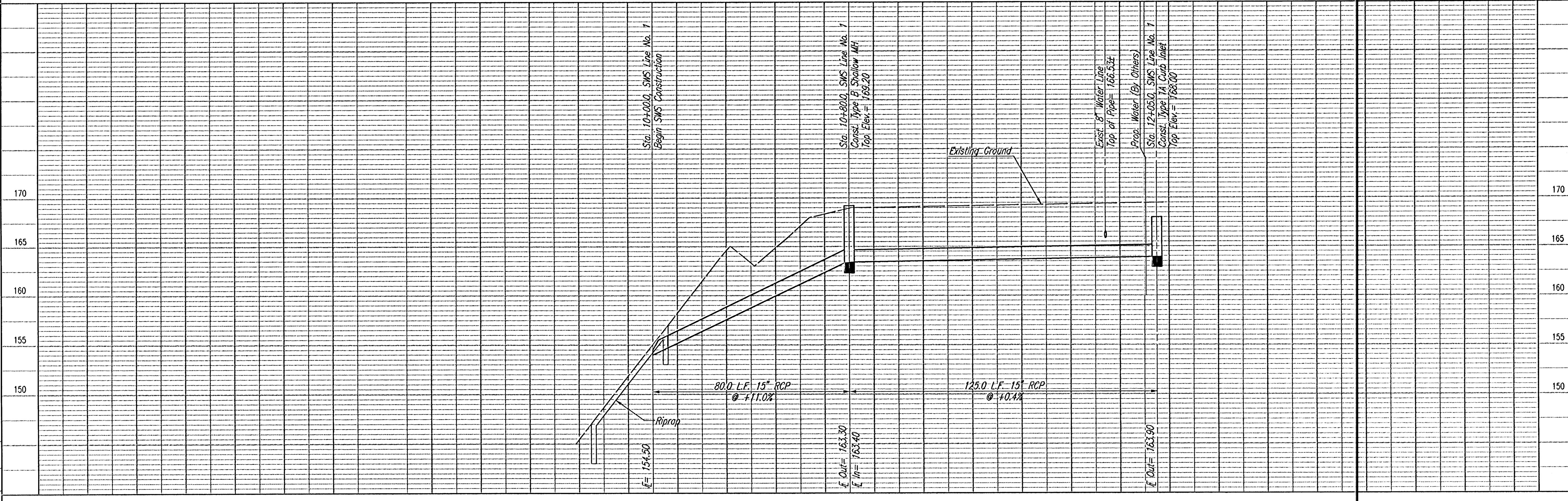
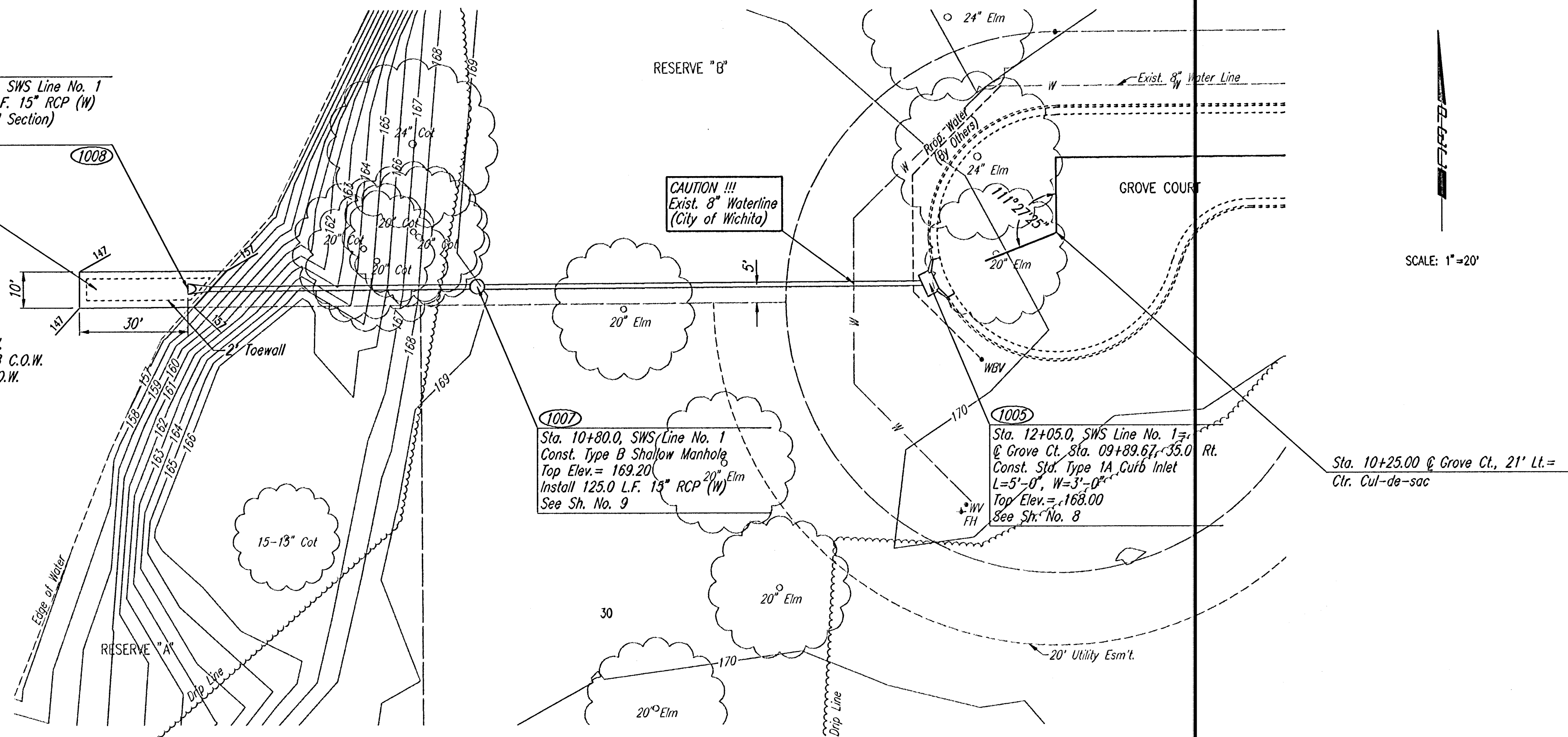
Install 40 S.Y.  
 Light Stone Riprap  
 See detail, this sheet

CAUTION !!!  
 Exist. 8" Waterline  
 (City of Wichita)

1007  
 Sta. 10+80.0, SWS Line No. 1  
 Const. Type B Shallow Manhole  
 Top Elev. = 169.20  
 Install 125.0 L.F. 15" RCP (W) Elm  
 See Sh. No. 9

1005  
 Sta. 12+05.0, SWS Line No. 1,  
 @ Grove Ct. Sta. 09+89.67, +35.0 Rt.  
 Const. Std. Type 1A Curb Inlet  
 L=5'-0", W=3'-0"  
 Top Elev. = 168.00  
 See Sh. No. 8

Sta. 10+25.00 @ Grove Ct., 21' Lt. =  
 Ctr. Cul-de-sac



PINE BAY ESTIMES

**SWS LINE NO. 1**  
 STA. 10+00.0 TO STA. 12+05.0

C.O.W. PROJ. NO. 472-63617

Professional Engineering Consultants, P.A.  
 308 S. TOBEKA WICHITA, KANSAS 67202  
 316-262-2691 • FAX 316-262-3003

Designed by: BEB  
 Drawn by: DEP

Job No. 02331  
 Date AUG. 2002

Sheet 6 of 19