

General Notes

- Contractor will be required to provide notice to utility companies a minimum of twenty-four (24) hours prior to any excavation, as follows:

Kansas One-Call 687-2470
The Contractor must notify the following in case of an emergency:

Cox Communications 262-4270
Kansas Gas Service 1-888-482-4350
Westar Energy 333-6650
Aquila Energy 1-888-482-4950
Southwestern Bell 268-2245
City of Wichita Water Dept. 268-4563
City of Wichita Sewer Maint. 268-4024
City of Wichita Storm Sewer Maint. 268-4090
City of Wichita Traffic Maint. 268-4034
Conoco Pipeline Co. 1-800-231-2551
Williams Pipeline Co. 529-6600
Phillips Pipeline Co. 1-800-766-8230

- Utility service lines, poles, valve boxes, meters, and etcetera are to be adjusted as necessary by others prior to construction unless the plans specifically call for their adjustment by the Contractor or unless the plans specifically identify a utility to be adjusted by its owner during construction. Existing utilities and their location, as shown on the plans, represent the best information obtainable for design. The Contractor will be required to work around existing utilities within the right-of-way which do not conflict with proposed construction.

- Rubble from the removal of miscellaneous structures and excess excavation which is to be wasted shall be disposed of on sites to be provided by the Contractor. These sites shall be approved by the Engineer as to suitability, appearance on site location. Locations, in the opinion of the Engineer, will leave an unsightly appearance will not be approved. All disposal sites must be approved by the Kansas Department of Health and Environment. Material either stockpiled or disposed of in a flood plain would require a Kansas State Board of Agriculture permit. Any material dumped in waters of the United States or wetlands is subject to U.S. Corps of Engineers permitting regulations. Any material buried or stockpiled beyond approved construction limits would require additional archaeological investigations unless buried in a previously approved borrow location.

Benchmark

BM #1: "□" on hubguard of RCBC, 73' W of SE Cor., SE 1/4 Sec. 28, T26S, R1W, Elev. = 144.22 City Datum

BM #2: 60d step bench in HLP, 15' N & 40' E of the intersection of 34th St. N. and Eisenhower, Elev. = 144.00 City Datum

- Trees and shrubs in public right-of-way which are in direct conflict with proposed new construction shall be removed by the Contractor with the Engineer's approval. Trees and shrubs which are not in direct conflict with proposed new construction shall be saved and protected from damage.

- The Contractor shall give all property owners and/or tenants of developed property abutting the construction of this project a minimum of ten (10) days advance notice prior to start of construction.

- The Contractor shall be responsible for preserving property irons. The Contractor will be required to re-establish any property irons which are damaged or destroyed by his construction operations. Such irons shall be re-established by a licensed land surveyor in accordance with state laws.

- All areas disturbed during construction shall be seeded, mulched, and fertilized as follows (Permanent Seeding):


Seed: Ryegrass: 5 lbs./1000 Sq. Ft.
Kansas Premium Fescue Blend: 3 lbs./1000 sq. ft.
Mulch: Prairie Hay: 2 tons/acre
Fertilizer: 12-24-12: 850 lbs./acre

All costs associated with seeding, mulching, and fertilizing shall be included in bid item "Project Seeding." All seeding operations shall conform to City of Wichita Standard Specifications.

- All excess excavation shall remain on site.

Sheet Index

Title Sheet	1
29' Pavement Detail	2
Sign Detail	3
Miscellaneous Details	4
Entrance Details	5
Sandplum Cir.	6
Sandplum Ct.	7
Soil Erosion BMPs	8
Street X-Sections	9-12
Copy of Plat	13

Benefit District: 

Proposed Streets: 

SANDPLUM CIRCLE PAVING IMPROVEMENTS

to serve

RIDGE PORT NORTH 3RD ADDITION - PHASE III

Sandplum Cir., from the south line of 34th Street North, south and east to and including the cul-de-sac.
Sandplum Ct., from the east line of Sandplum Cir., east to and including the cul-de-sac.

CITY OF WICHITA, KANSAS

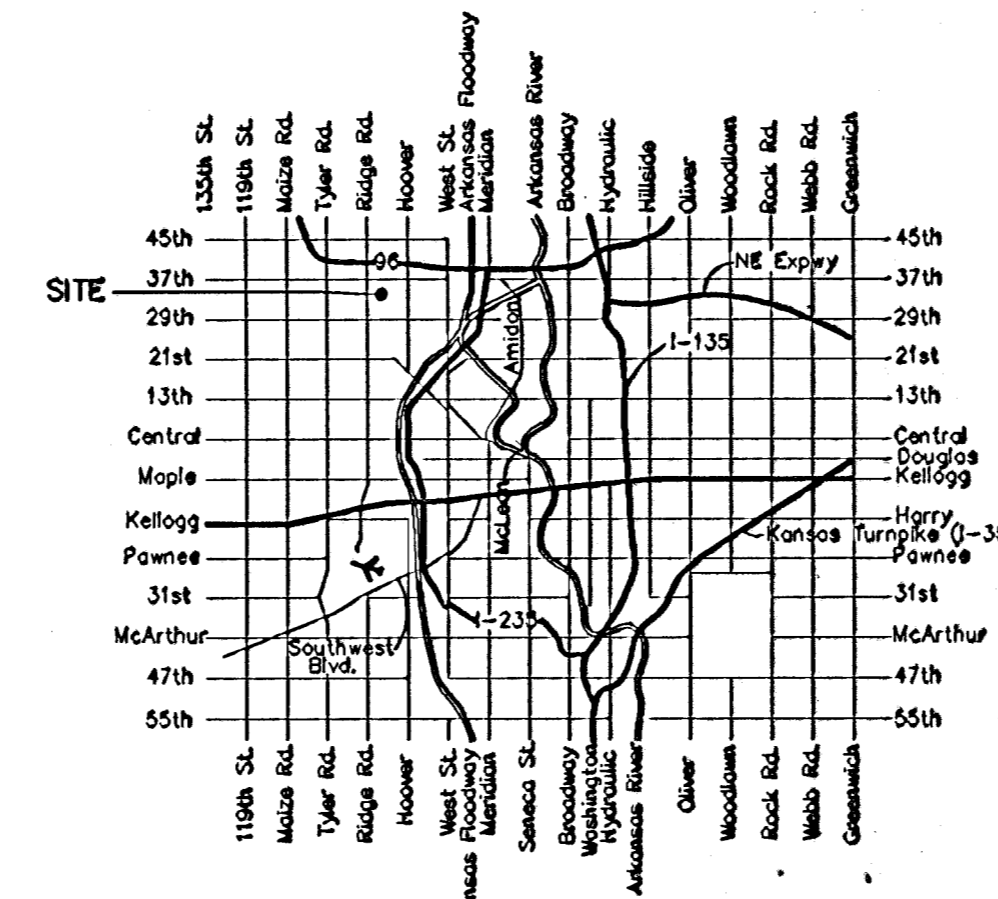
Michael E. Lindebak, P.E. City Engineer

Project Number

472-83410

O.C.A. Number

765734

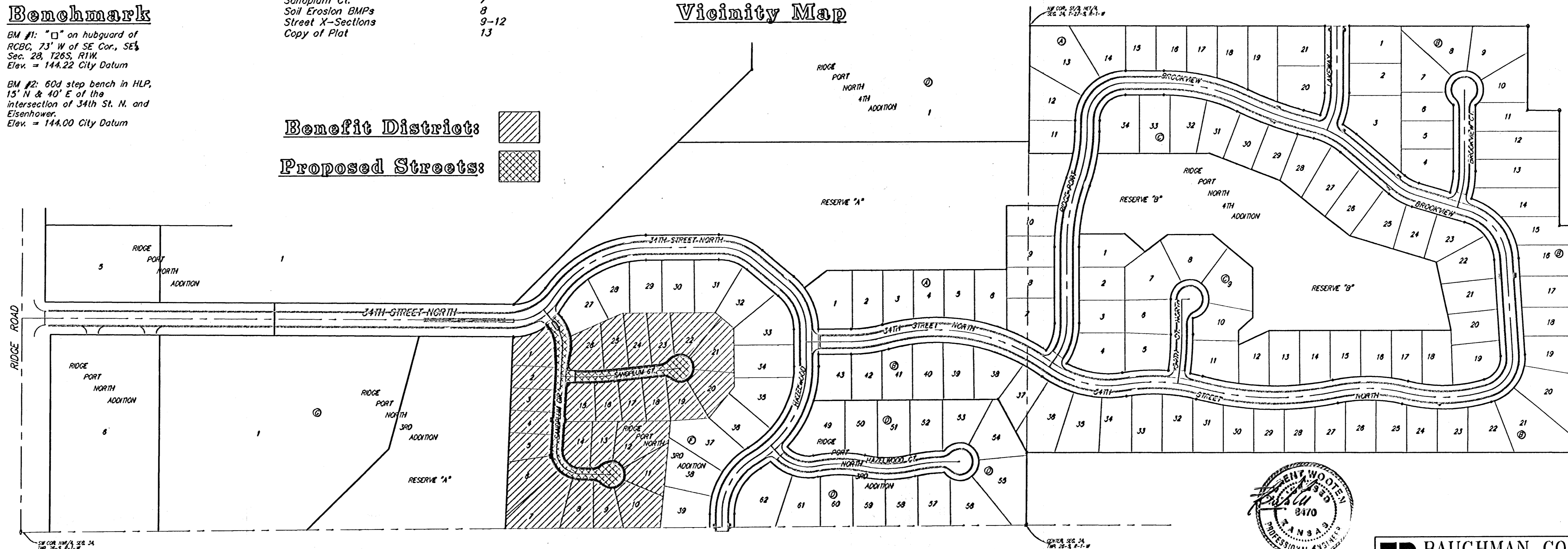


Vicinity Map

Project Earthwork Totals
Excavation = 907 C.Y.
Loose Fill = 58 C.Y.
Compacted Fill = 28 C.Y.

Total Project Length
876 L.F. = 0.17 Miles

Scale: 1" = 150'



BAUGHMAN COMPANY P.A.
ENGINEERING, SURVEYING, & PLANNING
315-262-7271 • 312 ELLIS • WICHITA, KANSAS 67211