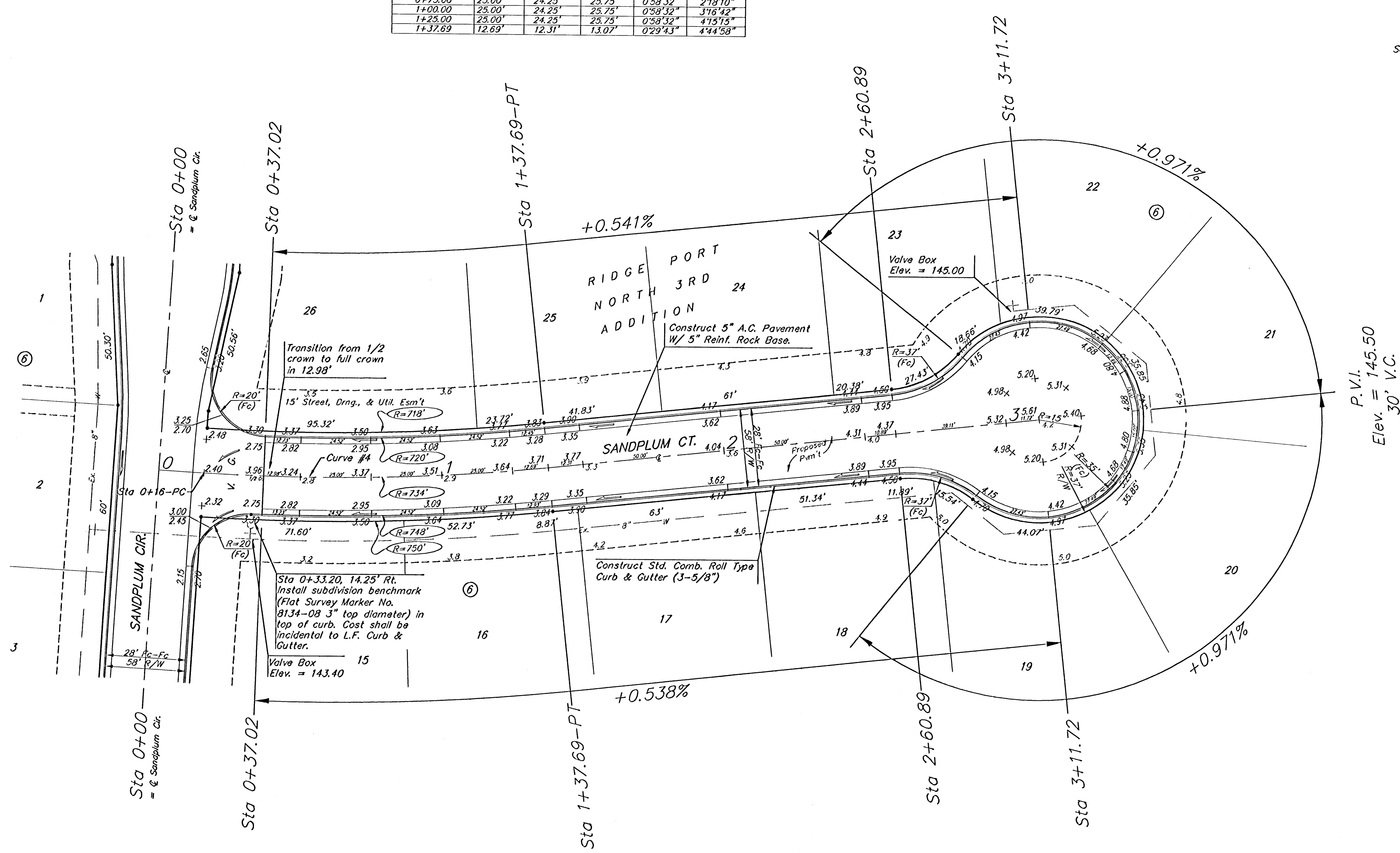
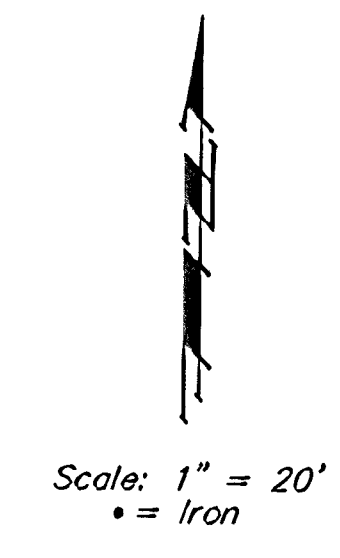


BENCHMARKS:  
 BM #1: "□" on hubguard of  
 RCBC, 73' W of SE Cor., SE 1/4  
 Sec. 28, T26S, R11W  
 Elev. = 144.22 City Datum

BM #2: 60d step bench in HLP,  
 15' N & 40' E of the  
 Intersection of 34th St. N. and  
 Eisenhower.  
 Elev. = 144.00 City Datum

Curve #4  
 Curve Data Based on Centerline  
 Rad. = 734' Delta = 9° 29' 56" Tangent = 60.98'  
 Arc = 121.69' L.C. = 121.55' Del/Ft. = 2.34174 Min.

Station	FACE CHORD LENGTHS		Defl.	T. Defl.
	B' Lt.	B' Rt.		
0+16.00			0°00'00"	0°00'00"
0+25.00	9.00'	8.73'	0°10'47"	0°21'04"
0+37.02	12.02'	11.66'	0°28'09"	0°49'13"
0+50.00	12.98'	12.59'	0°30'24"	1°19'37"
0+75.00	25.00'	24.25'	0°58'32"	2°18'10"
1+00.00	25.00'	24.25'	0°58'32"	3°16'42"
1+25.00	25.00'	24.25'	0°58'32"	4°15'15"
1+37.69	12.69'	12.31'	0°29'43"	4°44'58"



Subdivision Bench Marks

Street & Station	Location Description	Elevation
Sandplum Ct. 0+33.20, 14.25' Rt.	Adjacent to Fire Hydrant at E. End of S. Curb Return of Sandplum Cr. & Sandplum Ct.	

NOTE: ROLL TYPE CURB & GUTTER TO BE CONSTRUCTED ON THE PAVEMENT SHOWN ON THIS SHEET. TOP OF CURB ELEVATIONS ARE GIVEN FOR FULL HEIGHT CURB.

RIDGE PORT NORTH 3RD ADDITION PH. 3  
**SANDPLUM CT.**  
 STREET IMPROVEMENTS

**BAUGHMAN COMPANY P.A.**  
 ENGINEERING, SURVEYING, & PLANNING  
 314-262-7271 • 313 ELLIS • WICHITA, KANSAS 67211

PROJECT NUMBER  
**472-83410**

DESIGN: NBW DRAWN: IMS APPROVED: DATE: 5/29/02 SCALE: Noted SHEET: 7 OF 13