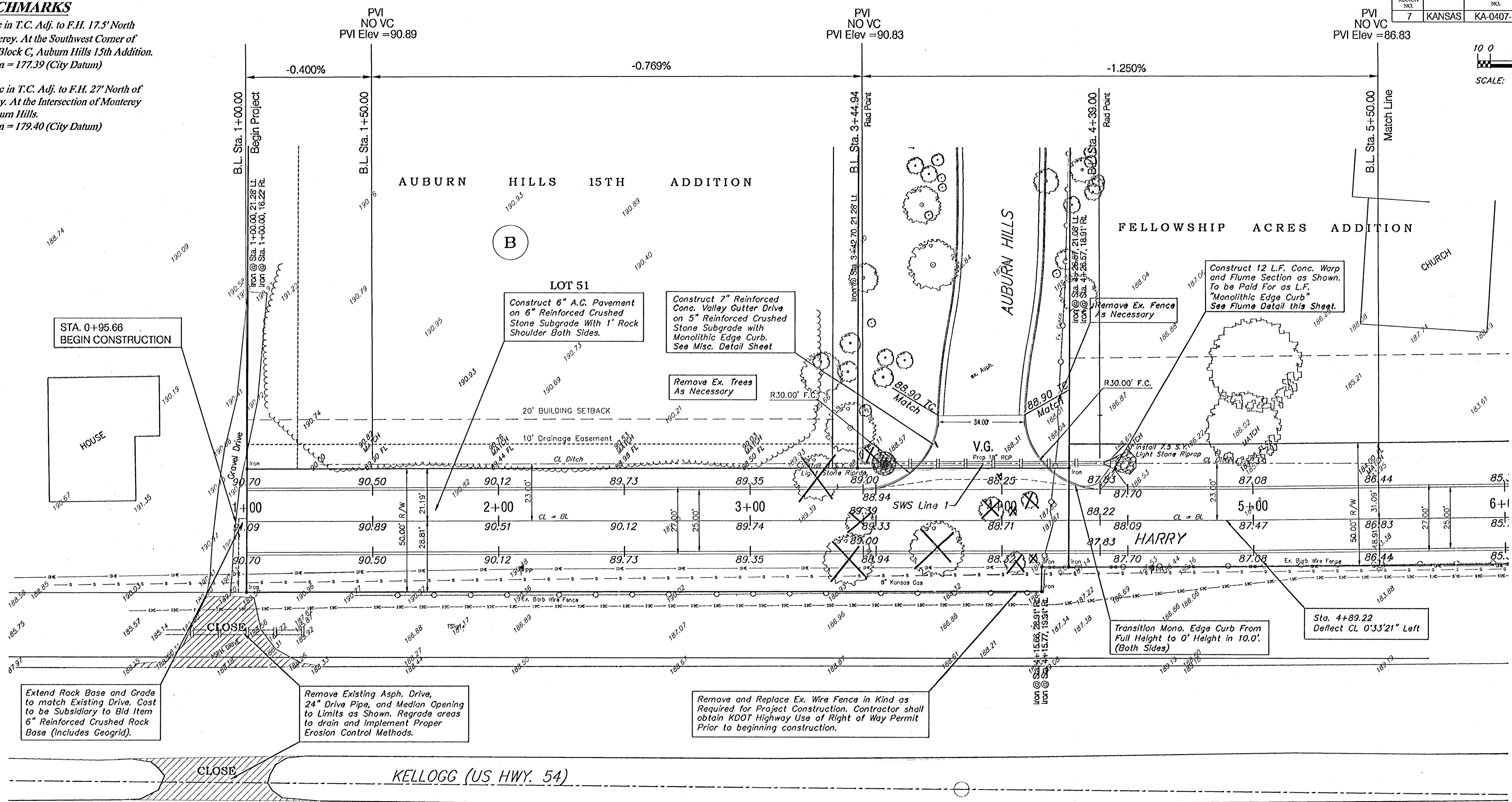
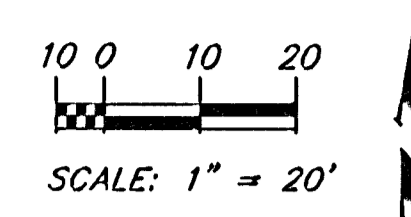


BENCHMARKS

City disc in T.C. Adj. to F.H. 17.5' North of Monterey. At the Southwest Corner of Lot 10, Block C, Auburn Hills 15th Addition. Elevation = 177.39 (City Datum)

City Disc in T.C. Adj. to F.H. 27' North of Monterey. At the Intersection of Monterey and Auburn Hills. Elevation = 179.40 (City Datum)

FHWA REGION NO.	STATE	PROJECT NO.	FISCAL YEAR	SHEET NO.	TOTAL SHEETS
7	KANSAS	KA-0407-01	2005	4	16

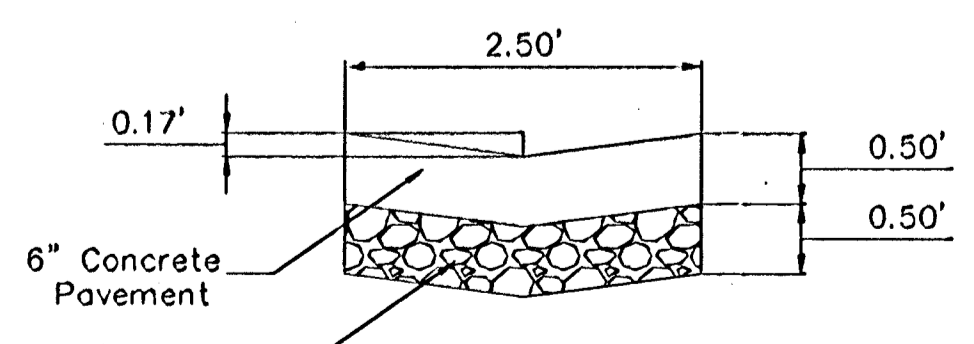


Remove Existing Asph. Drive, 24" Drive Pipe, and Median Opening to Limits as Shown. Regrade areas to drain and Implement Proper Erosion Control Methods.

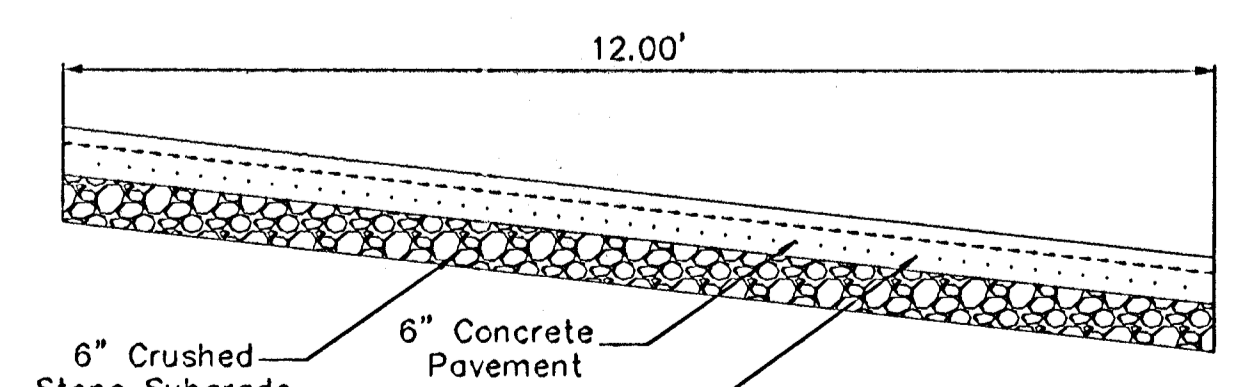
Remove and Replace Ex. Wire Fence in Kind as Required for Project Construction. Contractor shall obtain KDOT Highway Use of Right of Way Permit Prior to beginning construction.

Transition Mono. Edge Curb From Full Height to 0' Height in 10.0'. (Both Sides)

Sta. 4+89.22 Deflect CL 0'33"21" Left



CONCRETE FLUME DETAIL
No Scale



Note:
Trees to be removed are marked thus:

Design: AZIERB
Drawn: STAFF
Approved: ENGINEER
Scale: NOTED

Project No. 04-11-8103
CAPITAL IMPROVEMENT PROJECT
HARRY STREET PAVING
Sta. 1+00 to Sta. 5+50
AUBURN HILLS FRONTAGE ROAD - HARRY STREET

Baughman Company, P.A.
315 Ella St. Wichita, KS 67211 P 316-262-7271 F 316-262-0149
ENGINEERING | SURVEYING | PLANNING | LANDSCAPE ARCHITECTURE