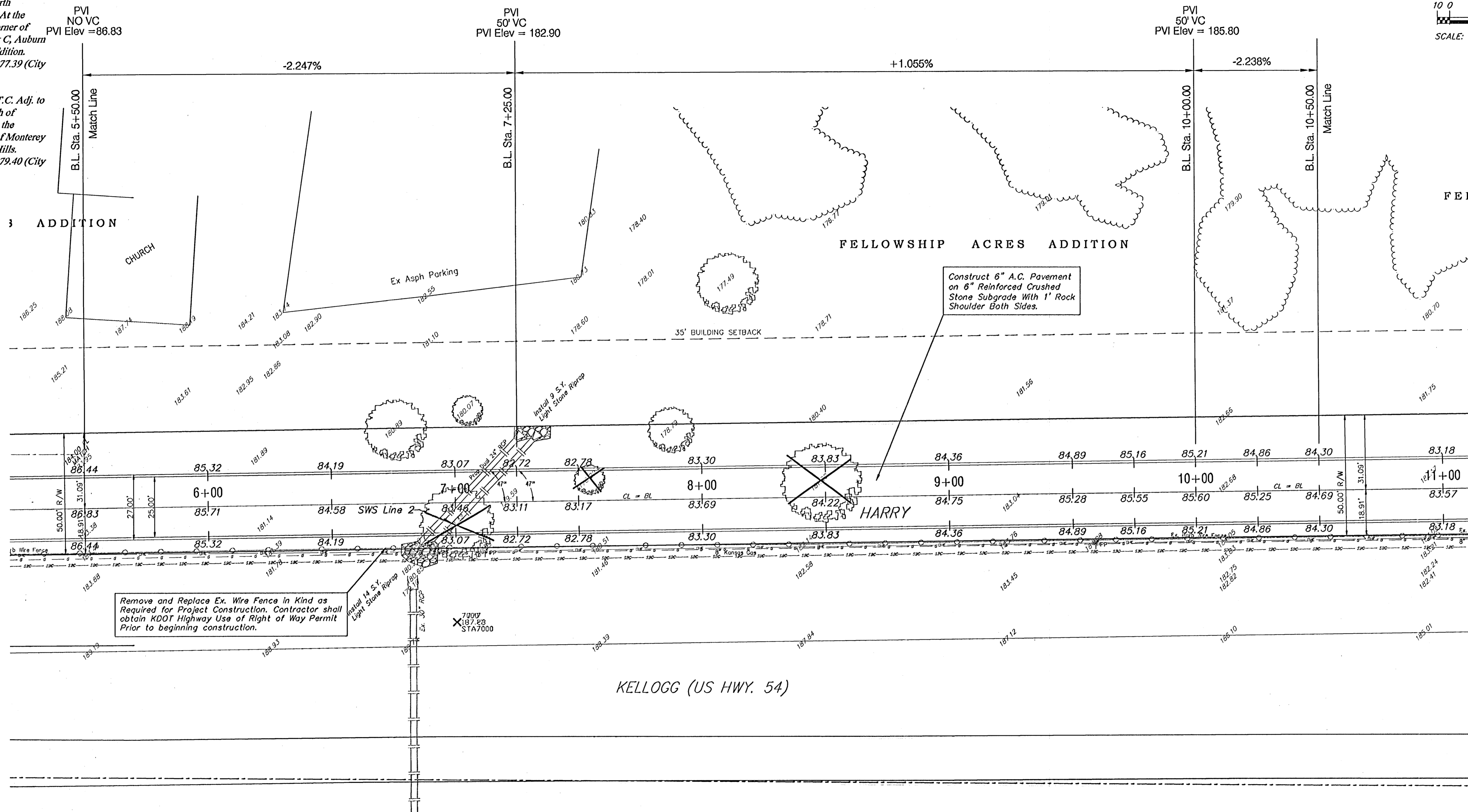
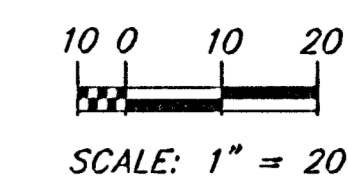


BENCHMARKS

City disc in T.C. Adj. to F.H. 17.5' North of Monterey. At the Southwest Corner of Lot 10, Block C, Auburn Hills 15th Addition. Elevation = 177.39 (City Datum)

City Disc in T.C. Adj. to F.H. 27' North of Monterey. At the Intersection of Monterey and Auburn Hills. Elevation = 179.40 (City Datum)

FHWA REGION NO.	STATE	PROJECT NO.	FISCAL YEAR	SHEET NO.	TOTAL SHEETS
7	KANSAS	KA-0407-01	2005	5	16



Remove and Replace Ex. Wire Fence in Kind as Required for Project Construction. Contractor shall obtain KDOT Highway Use of Right of Way Permit Prior to beginning construction.

Construct 6" A.C. Pavement on 6" Reinforced Crushed Stone Subgrade With 1' Rock Shoulder Both Sides.

Note:
Trees to be removed are marked thus:

Drawing File: F:\eng\Auburn hills frontage road\land\dwg\basemap (pav02)
 Design: AZIERS
 Drawn: STAFF
 Approved: ENGINEER
 Scale: NOTED

Project No. 0411-8103 CAPITAL IMPROVEMENT PROJECT
HARRY STREET PAVING
 Sta. 5+50 to Sta. 10+50
 AUBURN HILLS FRONTAGE ROAD - HARRY STREET

Baughman Company, P.A.
 315 Ellis St. Wichita, KS 67211 P 316-262-7271 F 316-262-0149
 ENGINEERING | SURVEYING | PLANNING | LANDSCAPE ARCHITECTURE

August, 2005
 SHEET
5
 OF
 14