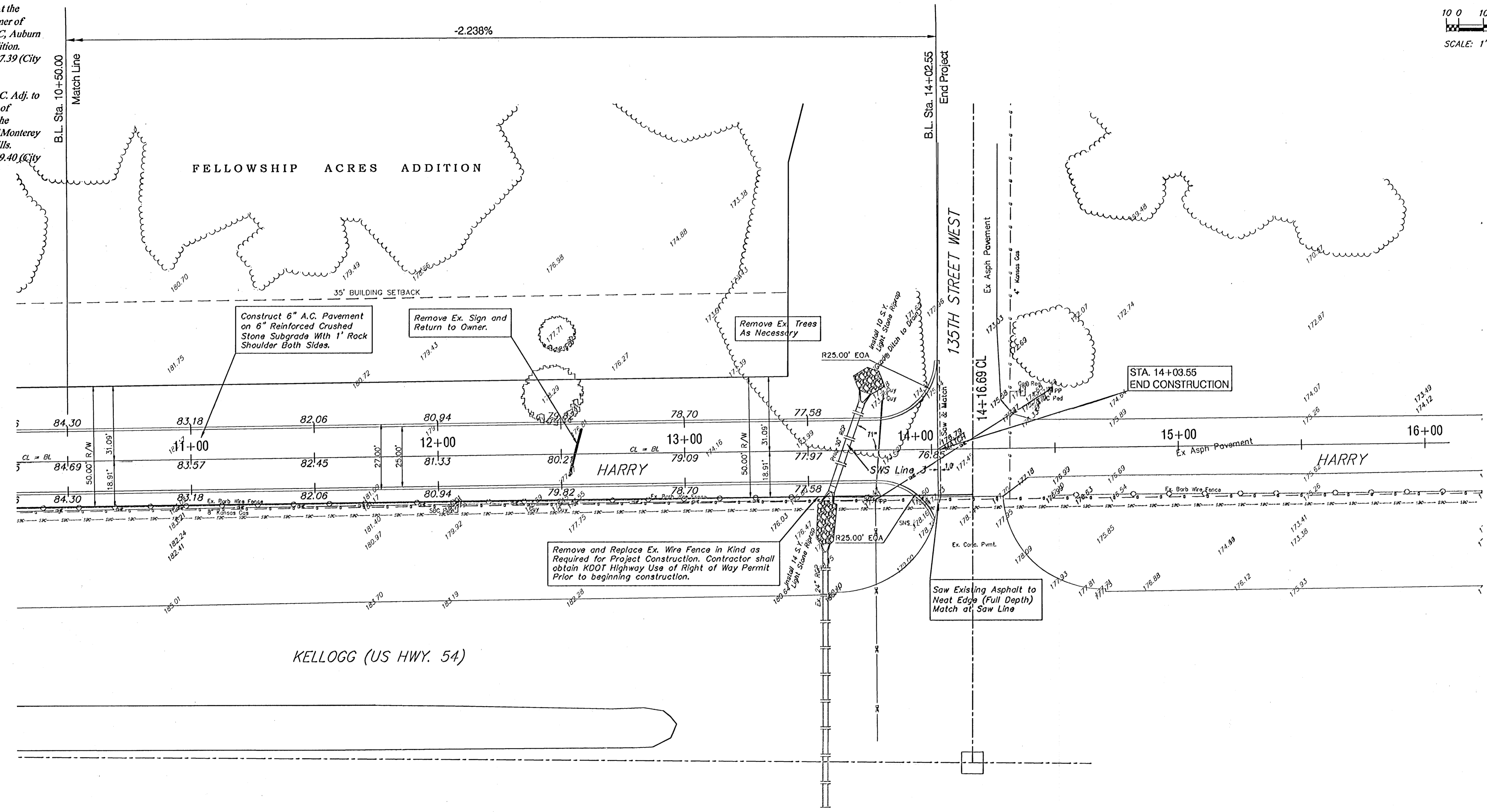
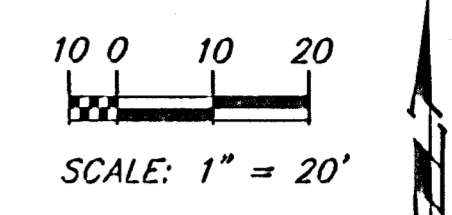


BENCHMARKS

City disc in T.C. Adj. to F.H. 17.5' North of Monterey. At the Southwest Corner of Lot 10, Block C, Auburn Hills 15th Addition. Elevation = 177.39 (City Datum)

City Disc in T.C. Adj. to F.H. 27' North of Monterey. At the Intersection of Monterey and Auburn Hills. Elevation = 179.40 (City Datum)

PHWA REGION NO.	STATE	PROJECT NO.	FISCAL YEAR	SHEET NO.	TOTAL SHEETS
7	KANSAS	KA-0407-01	2005	6	16



Note:
Trees to be removed are marked thus:

Drawing File: \\eng\Auburn hills frontage road\land\dwg\basemap (p03)
 Design: AZIERB
 Drawn: STAFF
 Approved: ENGINEER
 Scale: NOTED

Project No. 041118103 CAPITAL IMPROVEMENT PROJECT
HARRY STREET PAVING
 Sta. 10+50 to Sta. 14+16.69
 AUBURN HILLS FRONTAGE ROAD - HARRY STREET

Baughman Company, P.A.
 315 Ellis St. Wichita, KS 67211 P 316-262-7771 F 316-262-0149
 ENGINEERING | SURVEYING | PLANNING | LANDSCAPE ARCHITECTURE

August, 2005
 SHEET
6
 OF
 14