

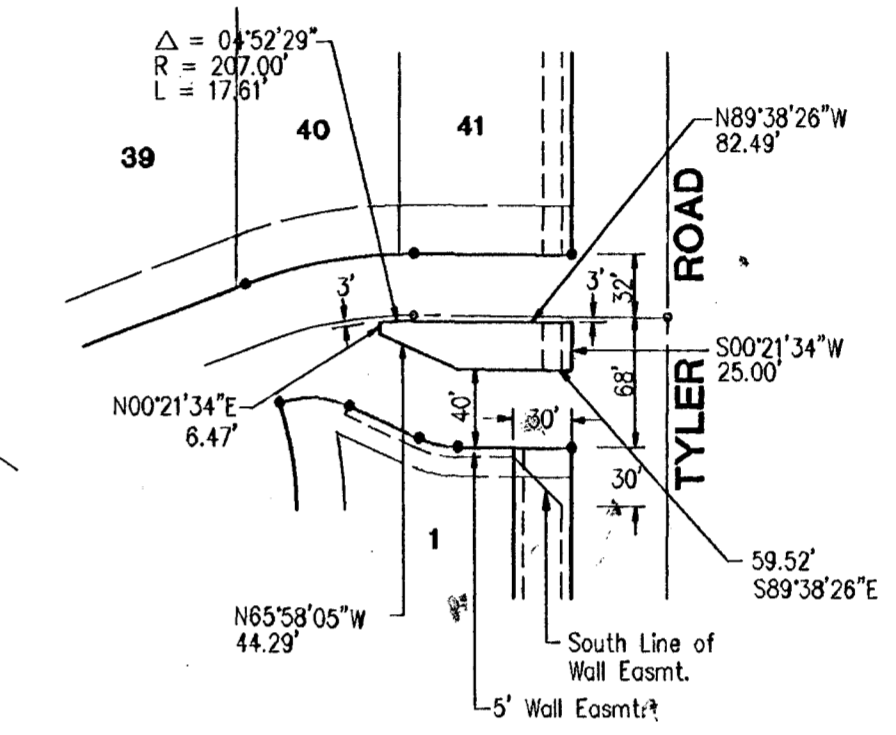
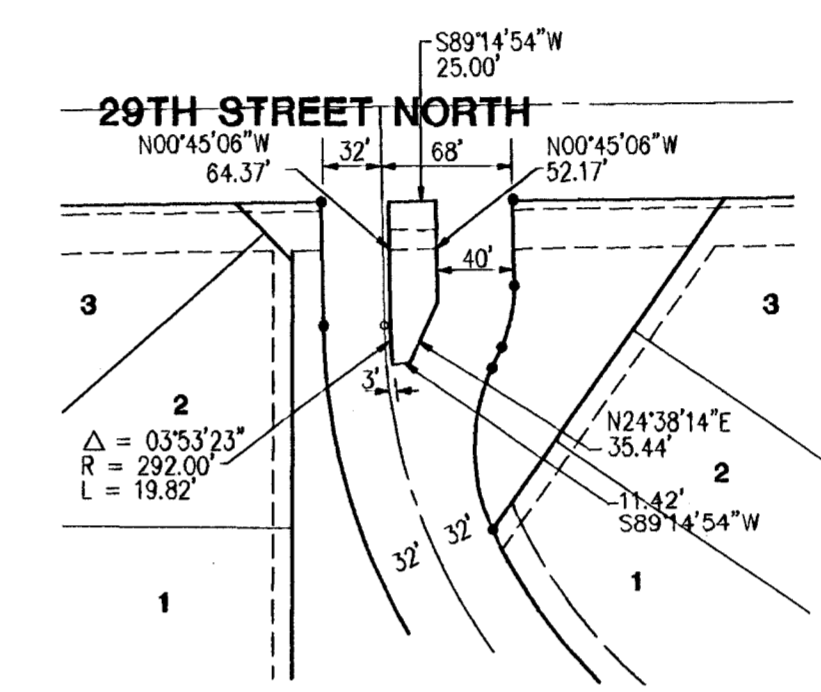
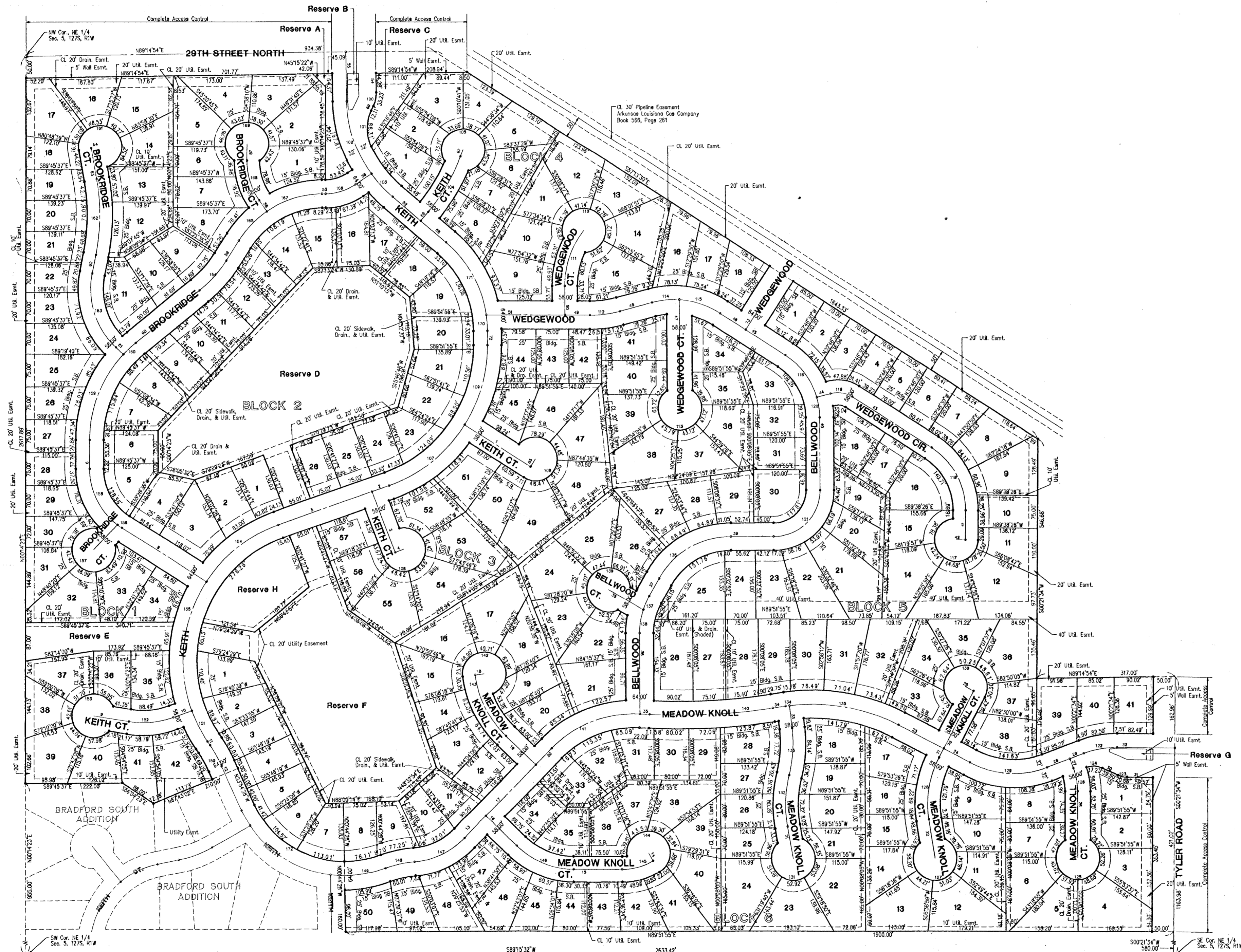
# BRADFORD NORTH

AN ADDITION TO WICHITA, SEDGWICK COUNTY, KANSAS



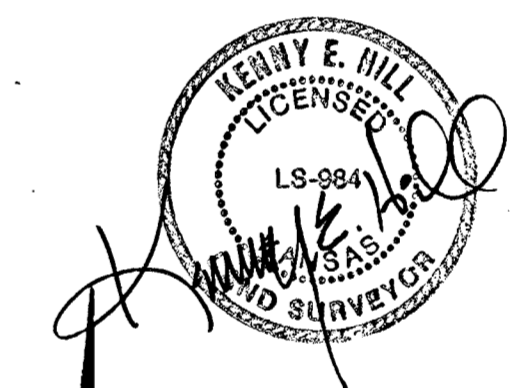
DESCRIPTION	REQUIRED MINIMUM BUILDING ELEVATIONS		MIN. LOW OPENING ELEV.	
	CITY DATUM	M.S.L.	CITY DATUM	M.S.L.
BLOCK 1				
Lots 1-31	163.7	1351.1	163.7*	1351.1
Lots 32-37	163.7	1351.1	164.7*	1352.1
Lots 38-40	163.7	1351.1	163.7*	1351.1
BLOCK 2				
Lots 2-15	163.7	1351.1	167.3*	1354.7
Lots 16-26	—	—	167.3	1354.7
BLOCK 3				
Lots 1-16	—	—	166.5	1353.9
Lots 56-57	—	—	166.5	1353.9

\* No building permits are to be issued for Lots 1 through 39, Block 1 or Lots 2 through 15, Block 2, unless the lowest floor can be constructed above 163.7 City Datum (1351.1 M.S.L.) or unless the City of Wichita has received a letter of map revision from FEMA which will allow buildings to be constructed at the lowest opening listed in the accompanying table.



RESERVE B and G DETAILS

NO SCALE



1-16-96



SCALE: 1" = 150'

**YOUNG & ASSOCIATES, P.A.**  
 Civil and Environmental Engineers  
 City of Wichita  
 Sedgwick County, Kansas

**PLAT**

**BRADFORD NORTH ADDITION**

City Project No.: \_\_\_\_\_ Plat Engr: Poe & Assoc., Wichita, Ks.  
 Plat Date: March 4, 1996 Scale: 1" = 100'  
 Sheet No. 3 of 27

100 South Georgia  
 City, Kansas, 67207  
 Tele: (316) 798-2552  
 Fax: (316) 788-4468

D.T. 4-11-07 A.C. ADMIN. 17