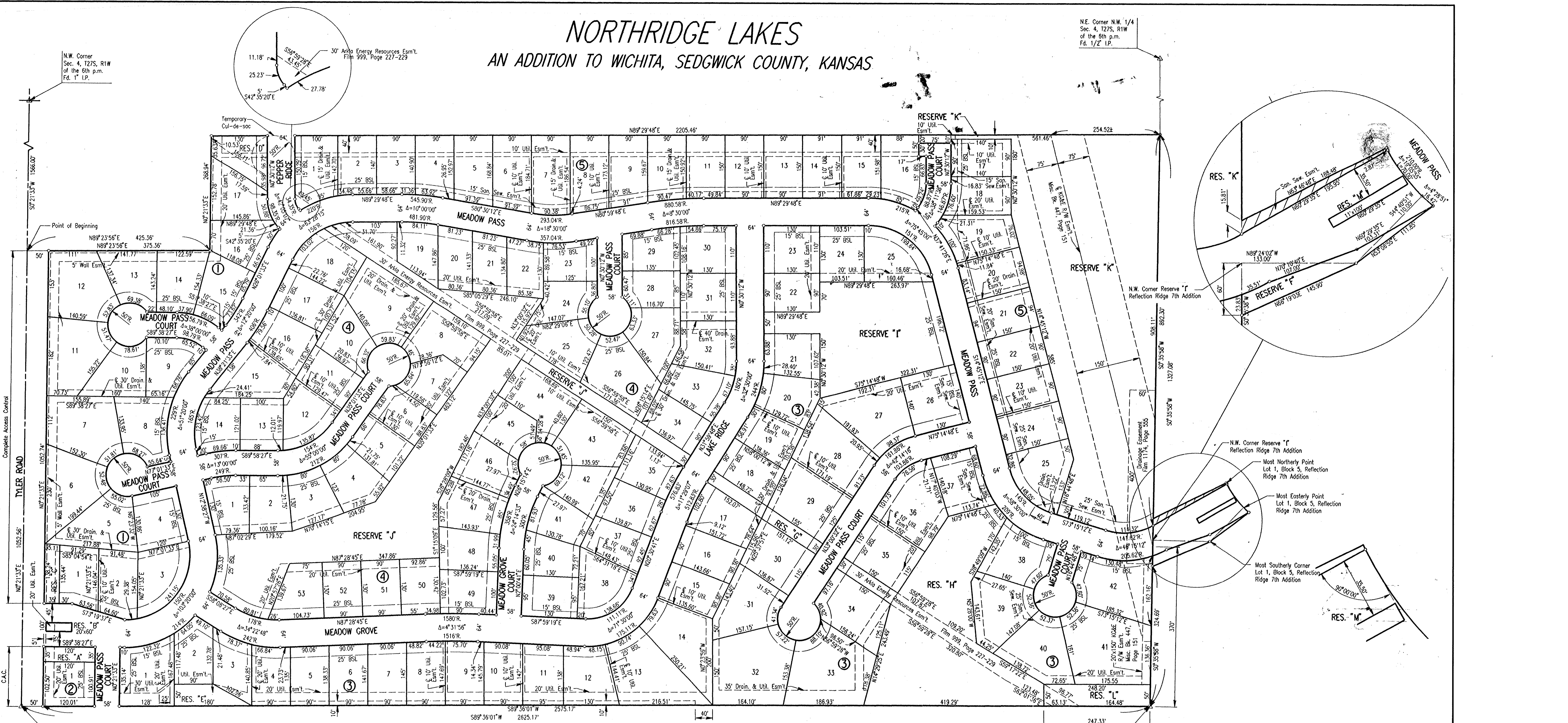


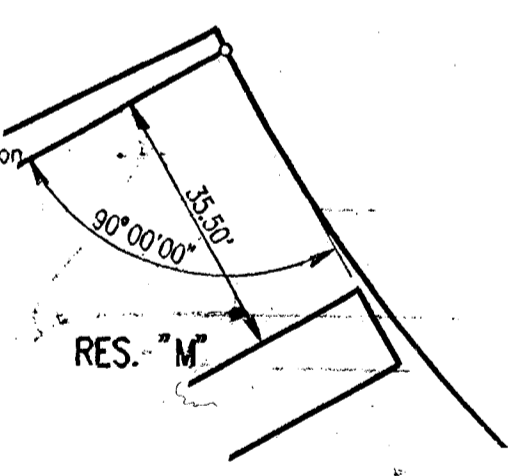
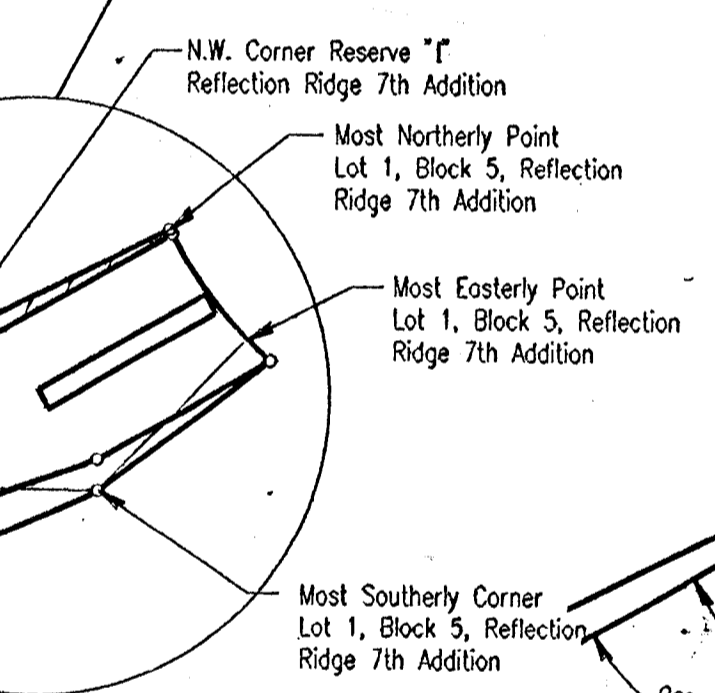
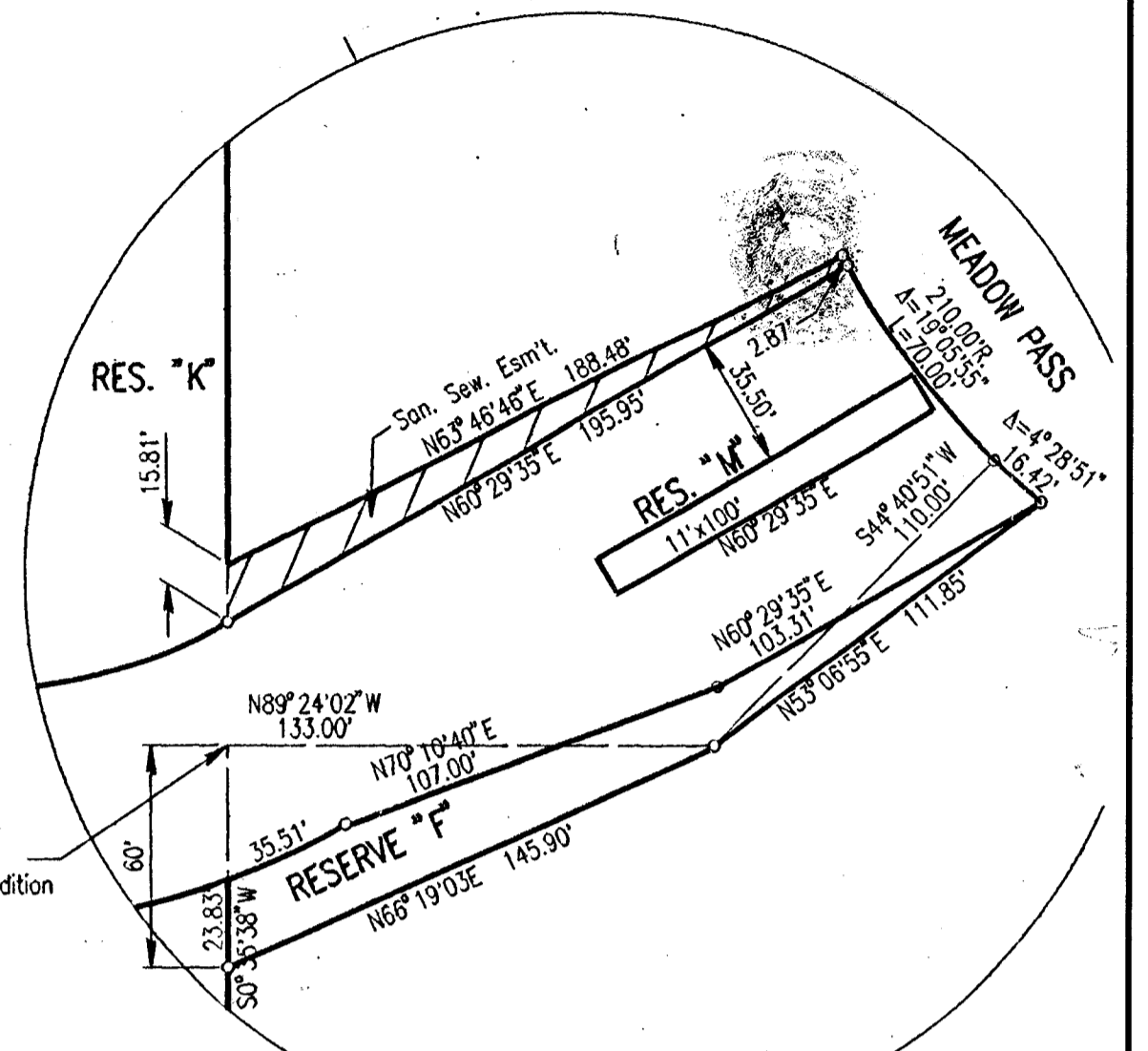
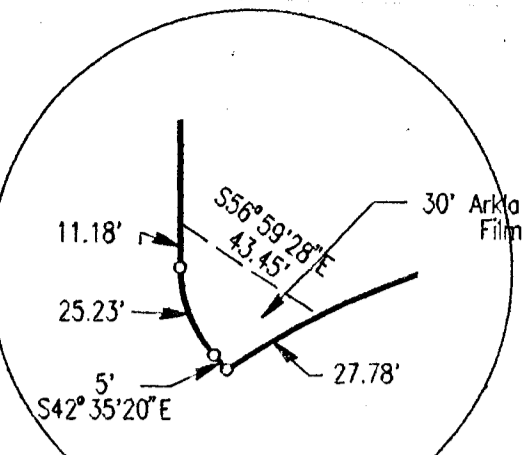
# NORTHRIDGE LAKES

## AN ADDITION TO WICHITA, SEDGWICK COUNTY, KANSAS

N.E. Corner N.W. 1/4  
Sec. 4, T27S, R1W  
of the 6th p.m.  
Fd. 1/2" I.P.



N.W. Corner  
Sec. 4, T27S, R1W  
of the 6th p.m.  
Fd. 1" I.P.



S.W. Corner, N.W. 1/4  
Sec. 4, T27S, R1W  
of the 6th p.m.  
Fd. 1/2" I.P.

Center  
Sec. 4, T27S, R1W  
of the 6th p.m.  
Fd. 3/4" I.P.

SCALE: 1"=100'  
○ = IRON SET  
BSL = BUILDING SETBACK LINE  
CAC = COMPLETE ACCESS CONTROL

MINIMUM PAD ELEVATION (LOWEST OPENING) AS FOLLOWS:

- BLOCK 3
  - LOTS 20 THROUGH 27 ELEV. = 1349.5 M.S.L. = 162.1 CITY DATUM
  - LOTS 33, 34, 39, AND 40 ELEV. = 1350.5 M.S.L. = 163.1 CITY DATUM
  - LOTS 35 THROUGH 38 ELEV. = 1344.6 M.S.L. = 157.2 CITY DATUM
- BLOCK 4
  - LOTS 1 THROUGH 9 ELEV. = 1357.0 M.S.L. = 169.6 CITY DATUM
  - LOTS 19 THROUGH 25 ELEV. = 1357.0 M.S.L. = 169.6 CITY DATUM
  - LOTS 44 THROUGH 48 ELEV. = 1357.0 M.S.L. = 169.6 CITY DATUM
  - LOTS 50 THROUGH 53 ELEV. = 1357.0 M.S.L. = 169.6 CITY DATUM
- BLOCK 5
  - LOTS 17 THROUGH 25 ELEV. = 1338.4 M.S.L. = 151.0 CITY DATUM

**YOUNG & ASSOCIATES, P.A.**  
Civil and Environmental Engineers

City of Wichita  
Sedgwick County, Kansas

**PLAT**

NORTHRIDGE LAKES ADDITION

City Project No.:	Plat Engr: P.E.C., Wichita, Ks.
Plat Date: August 7, 1995	Scale: 1" = 100'
Sheet No. 5 of 27	

100 South George  
Derry, Kansas, 67037  
Tel: (316) 788-2552  
Fax: (316) 788-4468