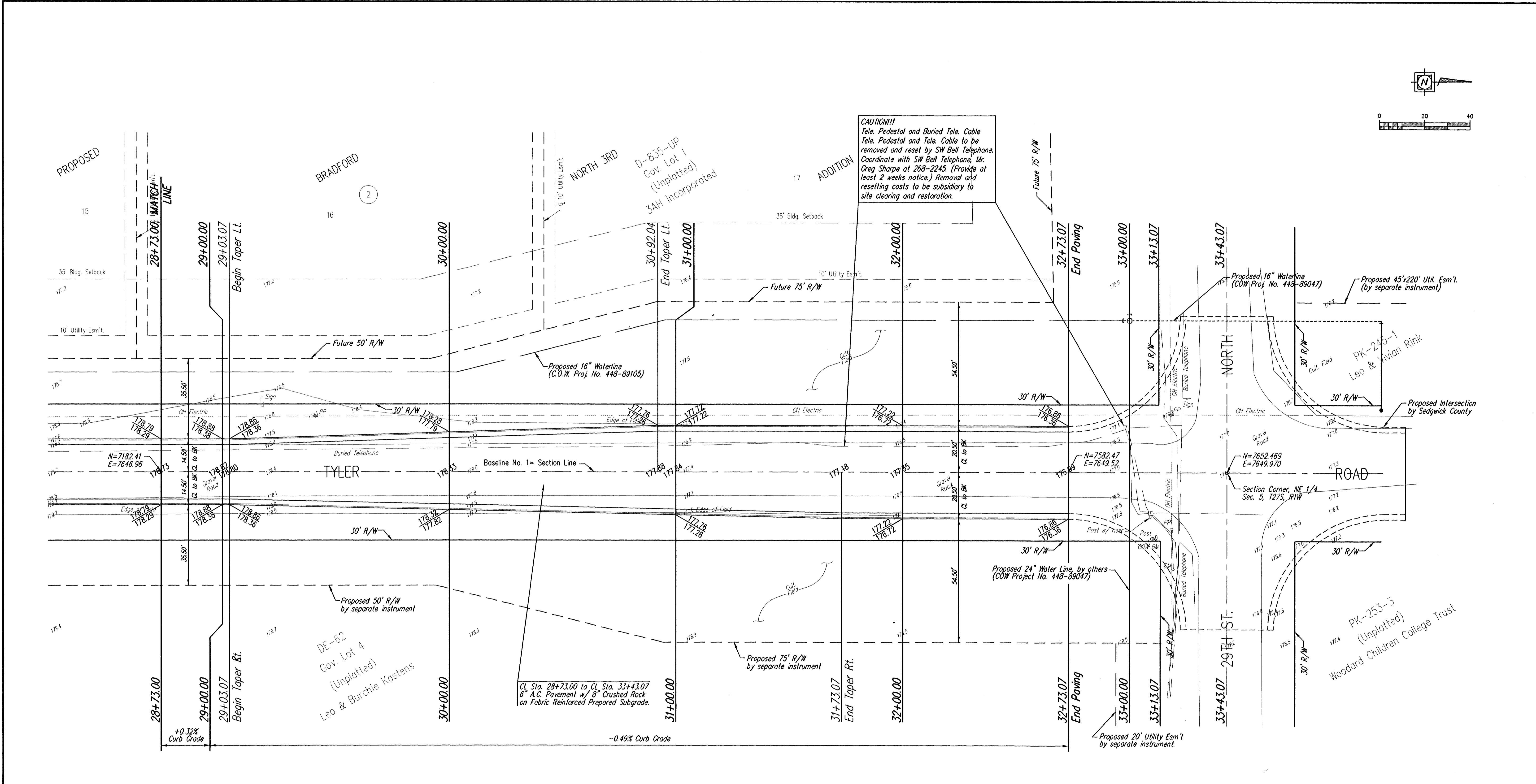


CAUTION!!!
 Tele. Pedestal and Buried Tele. Cable
 Tele. Pedestal and Tele. Cable to be
 removed and reset by SW Bell Telephone.
 Coordinate with SW Bell Telephone, Mr.
 Greg Sharpe at 288-2245. (Provide at
 least 2 weeks notice.) Removal and
 resetting costs to be subsidiary to
 site clearing and restoration.

CL Sta. 28+73.00 to CL Sta. 33+43.07
 6" A.C. Pavement w/ 8" Crushed Rock
 on Fabric Reinforced Prepared Subgrade.

- Site Benchmarks:
- COW disc. at Tyler and 29th St. N. 32.3' S. and 30' E. of centerline both, 55.5' E. of PP, 9.2' SE of PP, 44.1' SE of sec. corner. Elev. = 178.04
 - COW disc. at Tyler and 25th St. N. in E Parking of Tyler, 6.3' W of Iron on E R/W of Tyler, 1' N of fence cor. E and S. Elev. = 165.61

YOUNG & ASSOCIATES, P.A. CIVIL AND ENVIRONMENTAL ENGINEERS		100 South Georgia Derby Kansas, 67031 Tel: (316) 788-2552 Fax: (316) 788-4408
City of Wichita Sedgwick County, Kansas		
Sta. 28+73.00 to 32+73.07 PAVING PLAN		
Tyler Road from 29th Street North to 1/4 mile South Street and Storm Drainage Improvements		
Project No.: 96-036-002	Engr.: C.R. Young	
Date: February 1997	Tech.: J.L. Murphy	
Sheet No. 11 of 27		



FILE: 9605102.dwg DATE: 2-19-97 4:50:11 PM 17