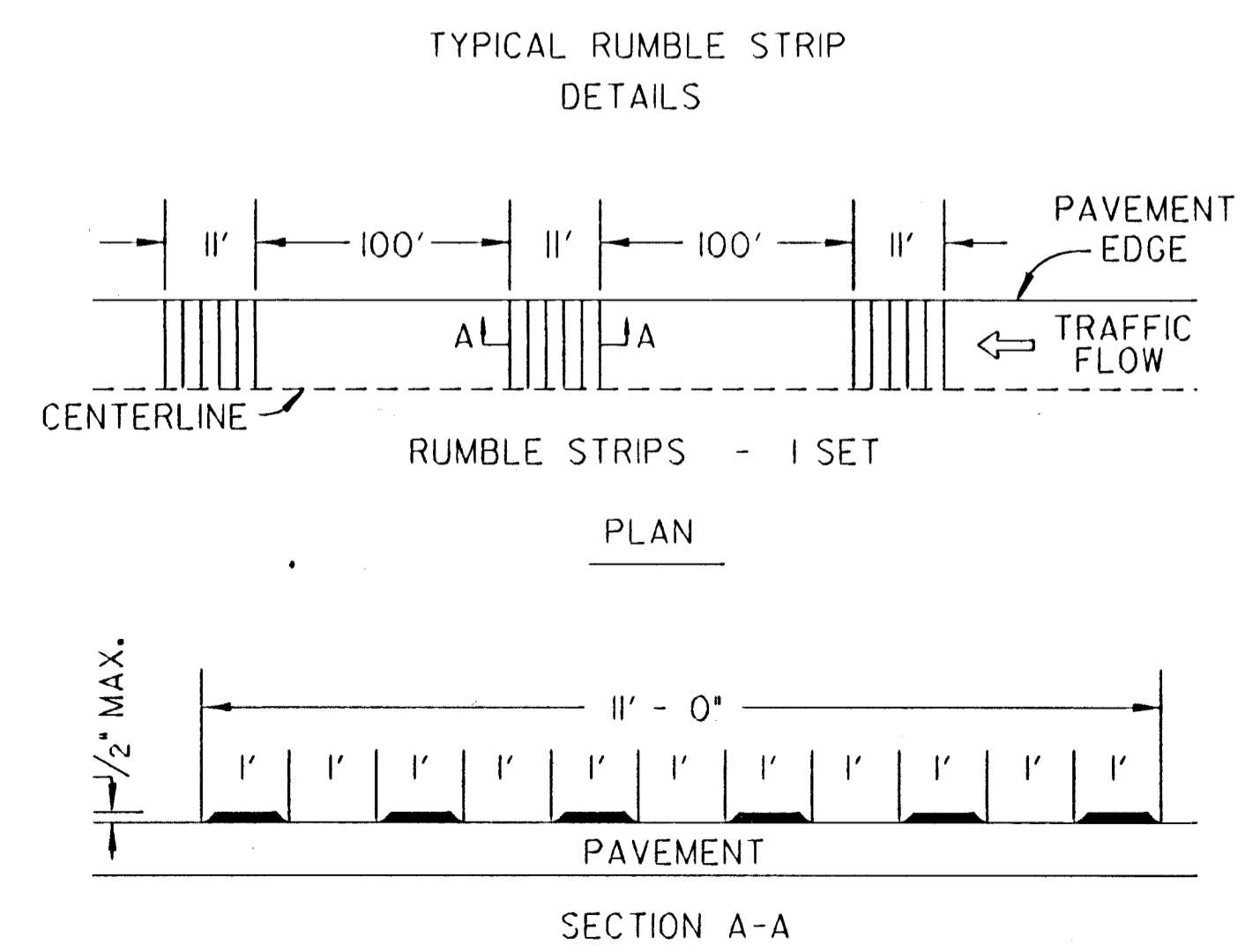
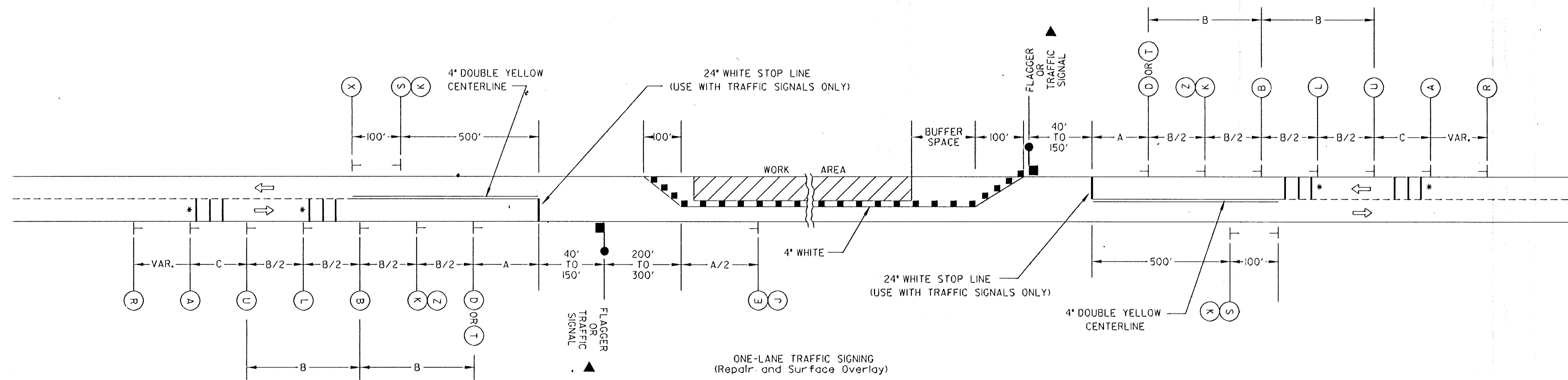
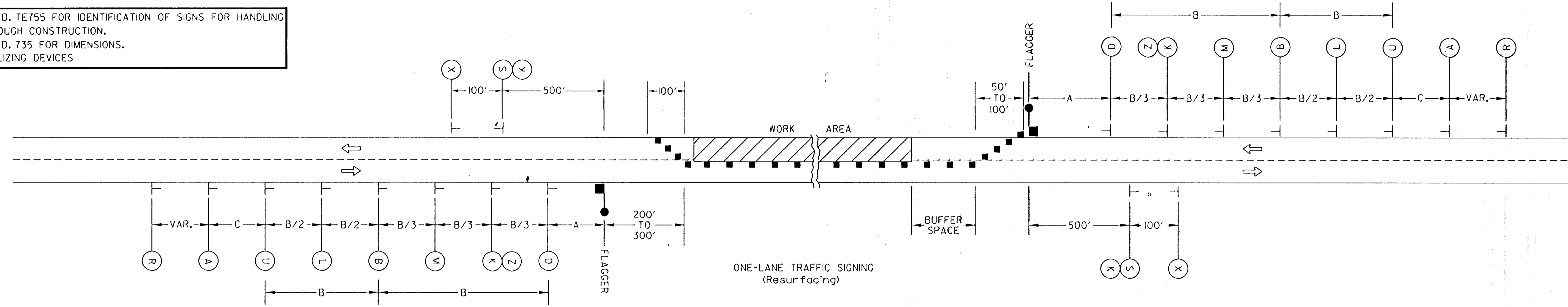


REFER TO STD. TE755 FOR IDENTIFICATION OF SIGNS FOR HANDLING TRAFFIC THROUGH CONSTRUCTION.
 REFER TO STD. 735 FOR DIMENSIONS.
 ■ = CHANNELIZING DEVICES



* TWO SETS OF RUMBLE STRIPS SHALL BE PLACED: ONE SET BETWEEN SIGNS (A) AND (U), AND ONE SET BETWEEN SIGNS (B) AND (L). MATERIALS FOR THE RUMBLE STRIPS SHALL BE FURNISHED BY K.D.O.T. TEMPLATE, HAULING, INSTALLATION AND REMOVAL ARE TO BE BY THE CONTRACTOR. PAYMENT SHALL BE SUBSIDIARY TO OTHER BID ITEMS.

▲ REFER TO TE804 AND TE805 FOR ADDITIONAL TEMPORARY TRAFFIC SIGNAL DETAILS.

IT IS INTENDED THAT TEMPORARY SIGNAL POLES BE LOCATED BASED ON THE MAXIMUM BUFFER SPACE EACH DIRECTION. THIS WILL EXTEND THE WORK AREA ON THE DOWNSTREAM SIDE OF THE CLOSED LANE.

NO.	DATE	REVISIONS	BY	APP'D
3	10/10/96	ADDED M4-20 AND END OF WORK ZONE R2-1 SIGNS	WPR	NAB
2	5/8/96	ADDED SIGNAL POLE NOTE	TCP	NAB
1	5/23/94	1994 MUTCD REVISIONS	WPR	NAB

KANSAS DEPARTMENT OF TRANSPORTATION
 TYPICAL TRAFFIC CONTROL
 TWO-LANE HIGHWAY
 ONE LANE CLOSED
 TE743 10/13/93

FHWA APPROVAL	2-2-96	APP'D	Neida A. Buckley
DESIGNED	DETAILED	QUANTITIES	TRACED
DESIGN CK.	DETAL CK.	QUAN. CK.	TRACE CK.