

CURVE DATA								
Curve No.	Curve Location	P.I. Sta. (Bk.)	Delta (DMS)	Radius (m)	Tangent (m)	Length (m)	External (m)	Super
56	North F.R.	4+493.439	02°46'05" Lt.	1 500.000	36.239	72.464	0.438	N.C.
57	North F.R.	4+742.116	01°28'46" Lt.	1 500.000	19.367	38.731	0.125	"
58	North F.R.	4+780.846	01°28'46" Rt.	1 500.000	19.367	38.731	0.125	"
59	North F.R.	4+951.497	01°28'46" Rt.	1 500.000	19.367	38.731	0.125	"
60	North F.R.	4+990.228	01°28'46" Lt.	1 500.000	19.367	38.731	0.125	"
61	North F.R.	5+079.753	01°59'29" Rt.	4 037.000	70.161	140.308	0.610	"

Scale: 1:1000

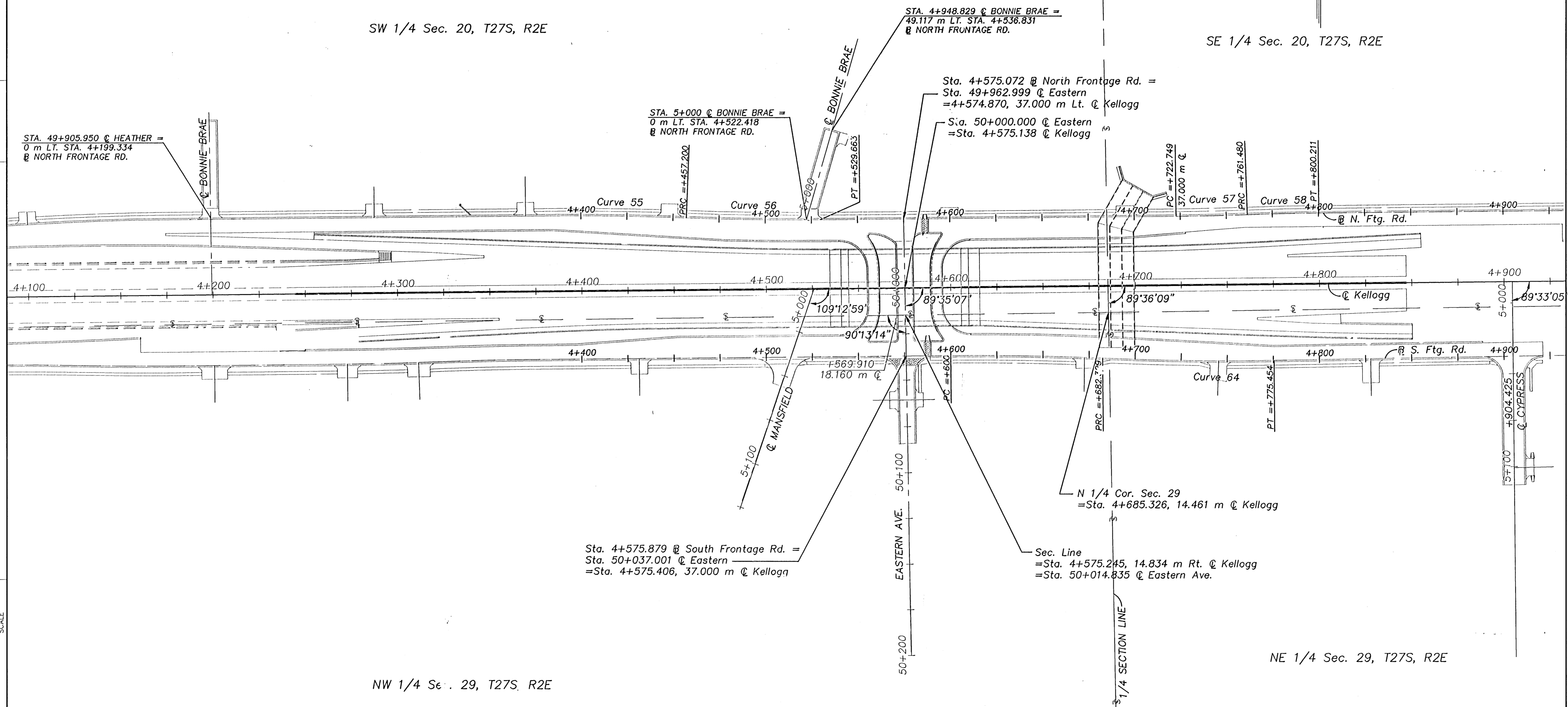
DATE
BY
REFERENCE NOTED
REFERENCE CHECKED

SW 1/4 Sec. 20, T27S, R2E

SE 1/4 Sec. 20, T27S, R2E

NW 1/4 Sec. 29, T27S, R2E

NE 1/4 Sec. 29, T27S, R2E



Drawn by
Plotted
SCALE

CFS Cook, Flatt & Strobel
ENGINEERS, P.A.

GEOMETRIC LAYOUT
 BONNIE BRAE
 STA. 4+947.951 to STA. 5+000.000
 Wichita, Kansas Sedgwick, Co.