

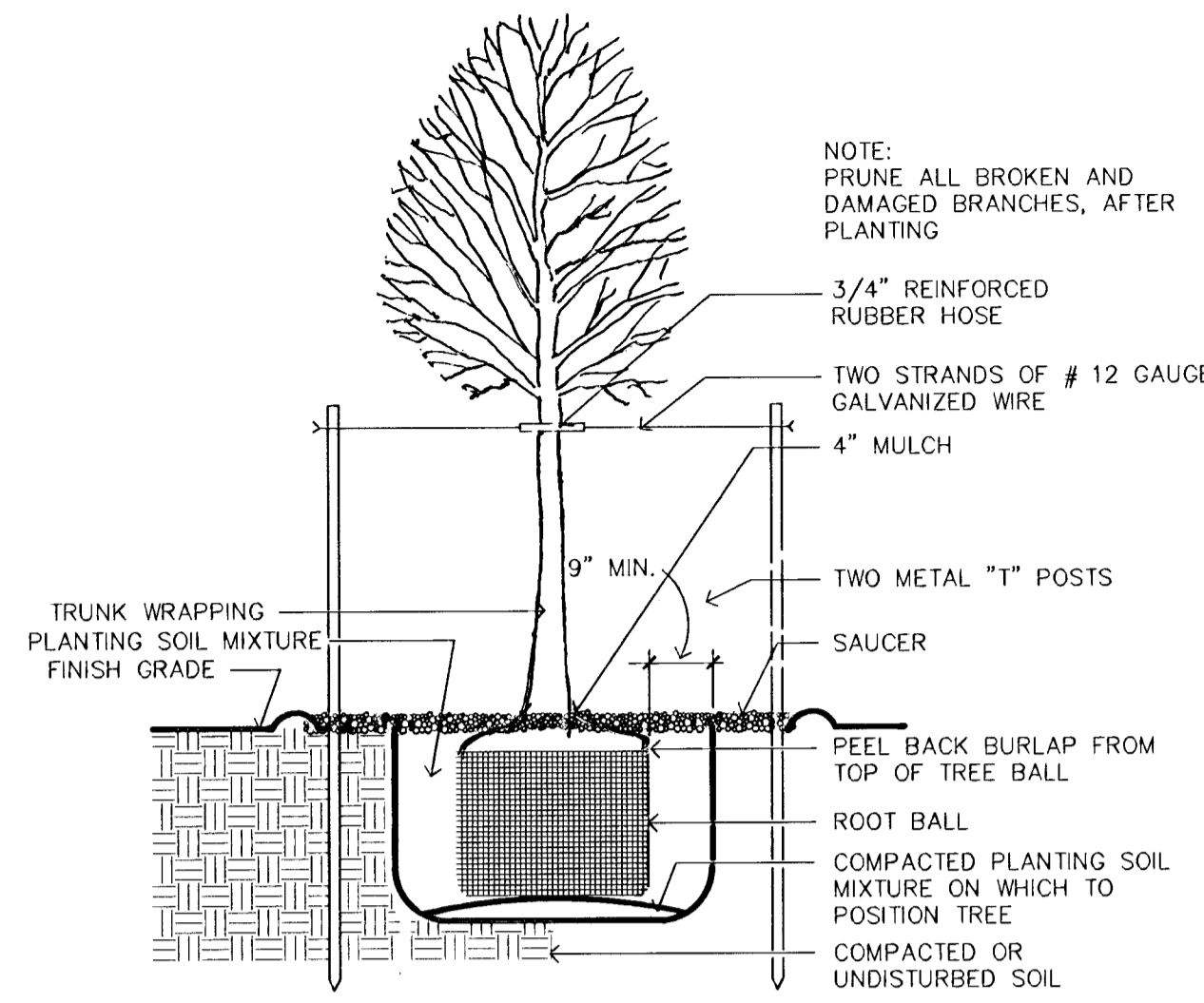
FHWA REGION NO.	STATE	PROJECT NUMBER	FISCAL YEAR	SHEET NUMBER	TOTAL SHEETS
7	KANSAS	87N-0195-01	2001	2	6

### LANDSCAPE NOTES:

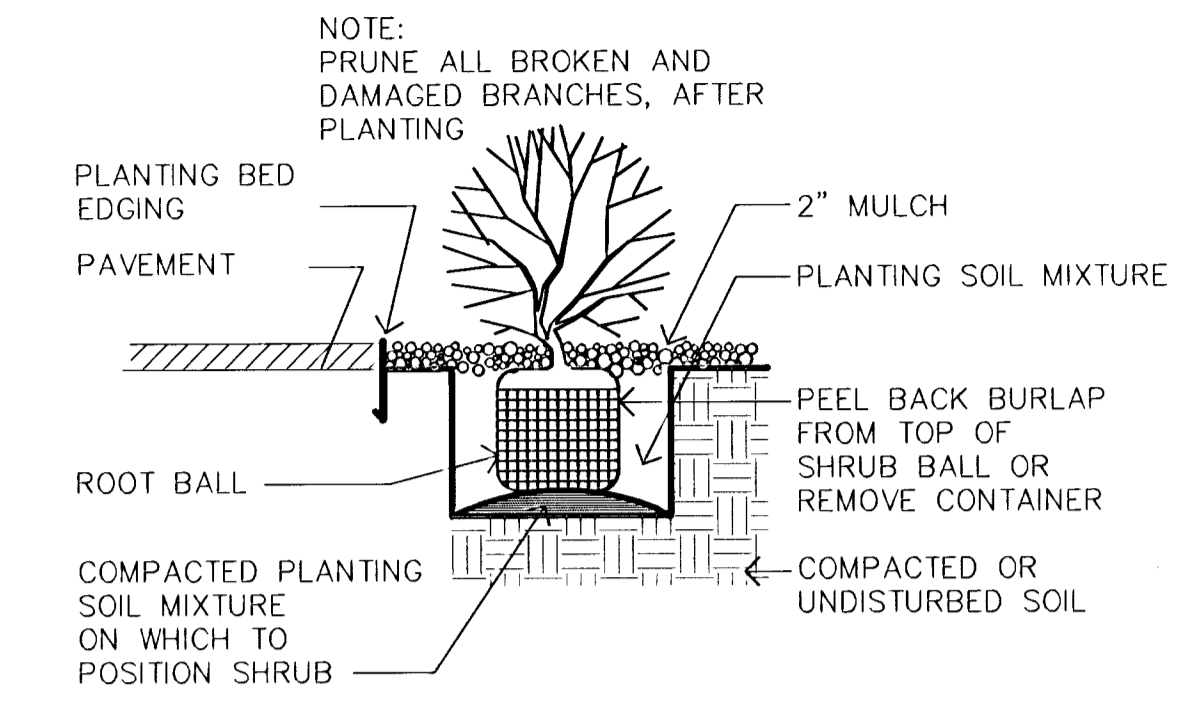
- ALL WORK SHALL BE DONE AS PER THE CITY OF WICHITA LANDSCAPE SPECIFICATIONS AND LOCAL NURSERY STANDARDS.
- TREES WITH BROKEN LEADERS WILL NOT BE ACCEPTED. ALL LANDSCAPING TO BE INSPECTED BY THE CONTRACTOR UPON DELIVERY.
- TOPSOIL HAULED ONTO SITE SHALL BE FERTILE, FRIABLE, NATURAL SANDY LOAM TOPSOIL, OF UNIFORM QUALITY CHARACTERISTIC OF REPRESENTATIVE LOCAL SOILS WHICH PRODUCE HEAVY GROWTH OF CROPS, GRASS OR OTHER VEGETATION. IT SHALL BE FREE OF SUBSOIL, CLAY LUMPS, BRUSH, WEEDS, ROOTS, STONES, TRASH OR OTHER MATTER TOXIC TO PLANT GROWTH. TOPSOIL SHALL BE DELIVERED IN AN UNFROZEN AND NON-MUDDY CONDITION AND SHALL BE SUBJECT TO APPROVAL BY THE PROJECT INSPECTOR.
- CONTRACTOR SHALL PROVIDE DESIGN, MATERIALS AND INSTALLATION OF AN IRRIGATION SYSTEM FOR MEDIANS AT EACH LOCATION NOTED ON THE PLANS. SUCH SYSTEM(S) SHALL CONFORM TO CITY STANDARD SPECIFICATIONS. ALL COST OF SUCH SYSTEM(S), INCLUDING WATER SERVICE CONNECTION, TO BE BID AS LUMP SUM "IRRIGATION SYSTEM".
- ALL PLANTING BEDS FOR SHRUBS SHALL HAVE THE EXISTING SOIL REMOVED AND REPLACED 12" IN DEPTH WITH APPROVED TOPSOIL, UNLESS THE EXISTING SOIL IS OF SIMILAR QUALITY AS THE APPROVED TOPSOIL.
- CONTRACTOR SHALL APPLY A PRE-EMERGENT TO THE PLANTING BEDS PRIOR TO THE PLANTING OF ANY SHRUBS.
- INSTALL 2" DEPTH OF MULCH IN ALL SHRUB PLANTING BEDS AND 4" DEPTH OF MULCH IN ALL OTHER AREAS OF MEDIANS. MULCH SHALL BE SHREDDED CYPRESS MULCH.
- ALL TURF AREAS WITHIN THE PARKING AREAS SHALL BE PLANTED WITH SOD BY OTHERS PRIOR TO LANDSCAPE PROJECT. LANDSCAPE CONTRACTOR SHALL REPLACE ANY SOD DISTURBED BY THIS PROJECT.
- CONTRACTOR SHALL LOCATE ALL BELOW-GROUND UTILITIES PRIOR TO THE START OF ANY CONSTRUCTION BY CALLING KANSAS ONE-CALL @ 316-687-2102. CONTRACTOR SHALL BE RESPONSIBLE FOR ANY DAMAGE TO EXISTING UTILITIES.
- THE LANDSCAPE CONTRACTOR IS RESPONSIBLE FOR ALL REQUIRED PERMITS AND IS TO ENSURE THAT ALL WORK IS PERFORMED IN ACCORDANCE WITH STATE AND LOCAL CODES.
- REPORT ANY DISCREPANCIES IN THE PLANTING PLAN TO THE ENGINEER PRIOR TO THE START OF ANY CONSTRUCTION.
- EXISTING TREES WITHIN PARKING AREAS AND CONSTRUCTION LIMITS SHALL NOT BE DISTURBED IF POSSIBLE. ANY TREE TO BE RELOCATED WILL BE MOVED WITH AN 80" + TREE SPADE, IF DEEMED POSSIBLE. CONTACT TIM MARTZ @ 268-4361 BEFORE REMOVAL.

### PLANT LIST (FOR INFORMATION ONLY)

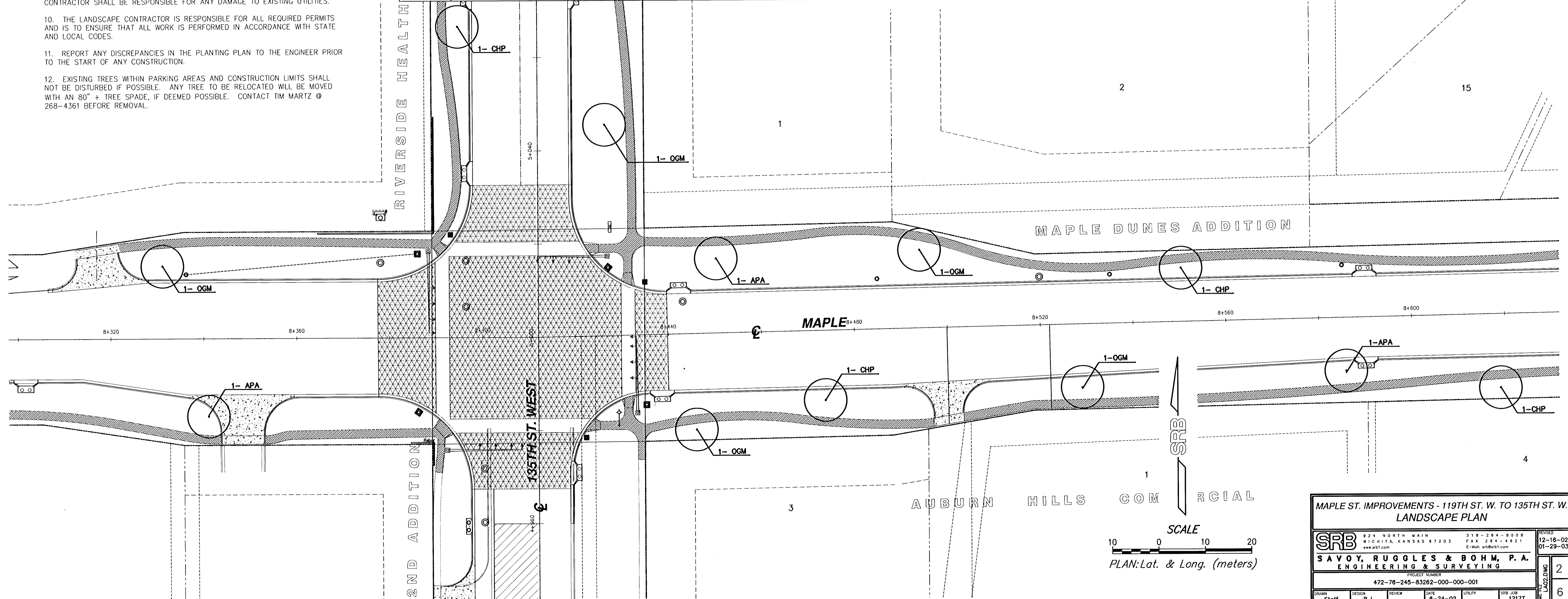
	ABV.	QTY.	COMMON NAME	BOTANICAL NAME	SIZE	CONDITION	
TREES	TP	8	TRINITY PEAR	<i>Pyrus calleryana</i> 'Trinity'	50 to 65mm cal.	BB	
	OGM	32	OCTOBER GLORY MAPLE	<i>Acer Rubrum</i> 'October Glory'	50 to 65mm cal.	BB	
	CHP	15	CHANTICLEER PEAR	<i>Pyrus calleryana</i> 'Chanticleer'	50 to 65mm cal.	BB	
	OR	8	OKLAHOMA REDBUD	<i>Cercis reniformis</i> 'Oklahoma'	50 to 65mm cal.	BB	
	APA	12	AUTUMN PURPLE ASH	<i>Fraxinus americana</i> 'Autumn Purple'	50 to 65mm cal.	BB	
	AP	19	AUSTRIAN PINE	<i>Pinus nigra</i>	2.5M height	BB	
	WW	3	WEEPING WILLOW	<i>Salix alba</i>	50 to 65mm cal.	BB	
	BC	2	BALD CYPRESS	<i>Taxodium distichum</i>	50 to 65mm cal.	BB	
	<b>SHRUBS</b>						
	RD	24	REDTIG DOGWOOD	<i>Cornus stolon</i>	5 Gal.	Cont.	
BB	8	COMPACT BURNING BUSH	<i>Euonymus alatus 'compacta'</i>	5 Gal.	Cont.		
GVP	40	GOLDEN VICARY PRIVET	<i>Ligustrum x vicaryi</i>	5 Gal.	Cont.		
FS	48	ANTHONY WATERER SPIREA	<i>Spiraea x bumalda</i> 'Anthony waterer'	2 Gal.	Cont.		
CP	144	CRIMSON PYGMY BARBERRY	<i>Berberis thunbergii</i> var. <i>Atropurpurea</i> 'Crimson Pygmy'	2 Gal.	Cont.		
		CYPRESS MULCH	842± S.M. (MEDIANS ONLY)				



**1 DECIDUOUS TREE PLANTING DETAIL**  
NOT TO SCALE



**2 SHRUB PLANTING DETAIL**  
NOT TO SCALE



**MAPLE ST. IMPROVEMENTS - 119TH ST. W. TO 135TH ST. W. LANDSCAPE PLAN**

	824 NORTH MAIN WICHITA, KANSAS 67203 www.srb.com	316-264-8008 FAX 316-264-4821 E-Mail: info@srb.com	REVISIONS 12-16-02 01-29-03
<b>SAVOY, RUGGLES &amp; BOHM, P.A.</b> ENGINEERING & SURVEYING			2
PROJECT NUMBER 472-76-245-83262-000-000-001			6
DRAWN Staff	DESIGN R.J.	REVIEW DATE 6-24-02	URS JOB 1217T