

CITY OF WICHITA, KANSAS

LANDSCAPE IMPROVEMENTS

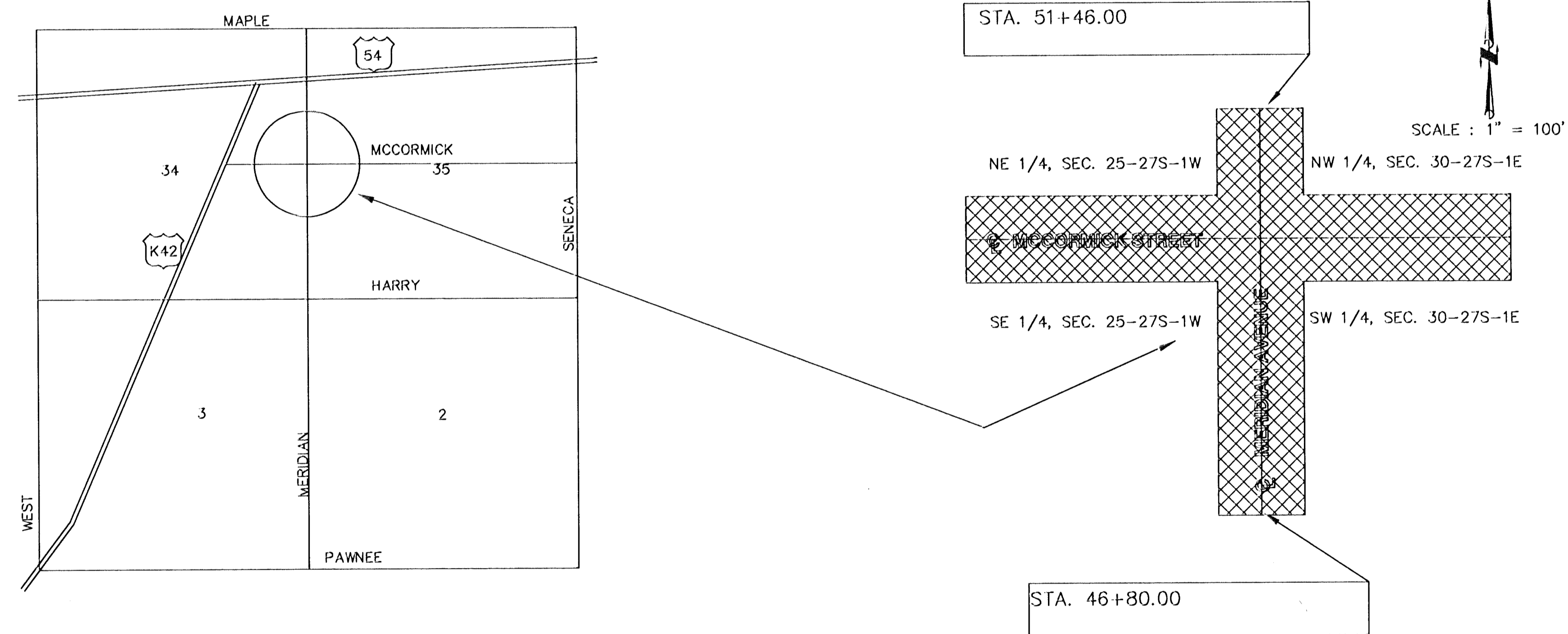
INDEX OF SHEETS

SHEET NO.:	1	TITLE SHEET
	2	LANDSCAPE PLANS

MERIDIAN AND MCCORMICK INTERSECTION
 WICHITA, SEDGWICK COUNTY, KANSAS

472-83265

OCA 706802



LOCATION MAP

MICHAEL E. LINDEBAK, P.E., CITY ENGINEER