

1-1

HARRY

WOODLAWN

MISSION

WINDSOR

FABRIQUE

FUNSTON

1813 S. Mission

1655

1707

1737

297

291'

298'

300'

360'

18"

180'

Point Repair: Remove and replace 10 lf of 8" pipe from MH 5945-016 to 10 lf north of said manhole.

Reconstruct the Outside Drop coming into MH 5945-016 from the north. Approximate pipe depth = 10.4 ft Approximate MH depth = 18.4 ft

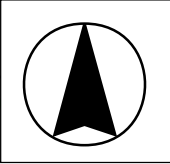
MH # 5945-041
 Replace Manhole Frame & Cover
 Approx depth = 12.4 ft

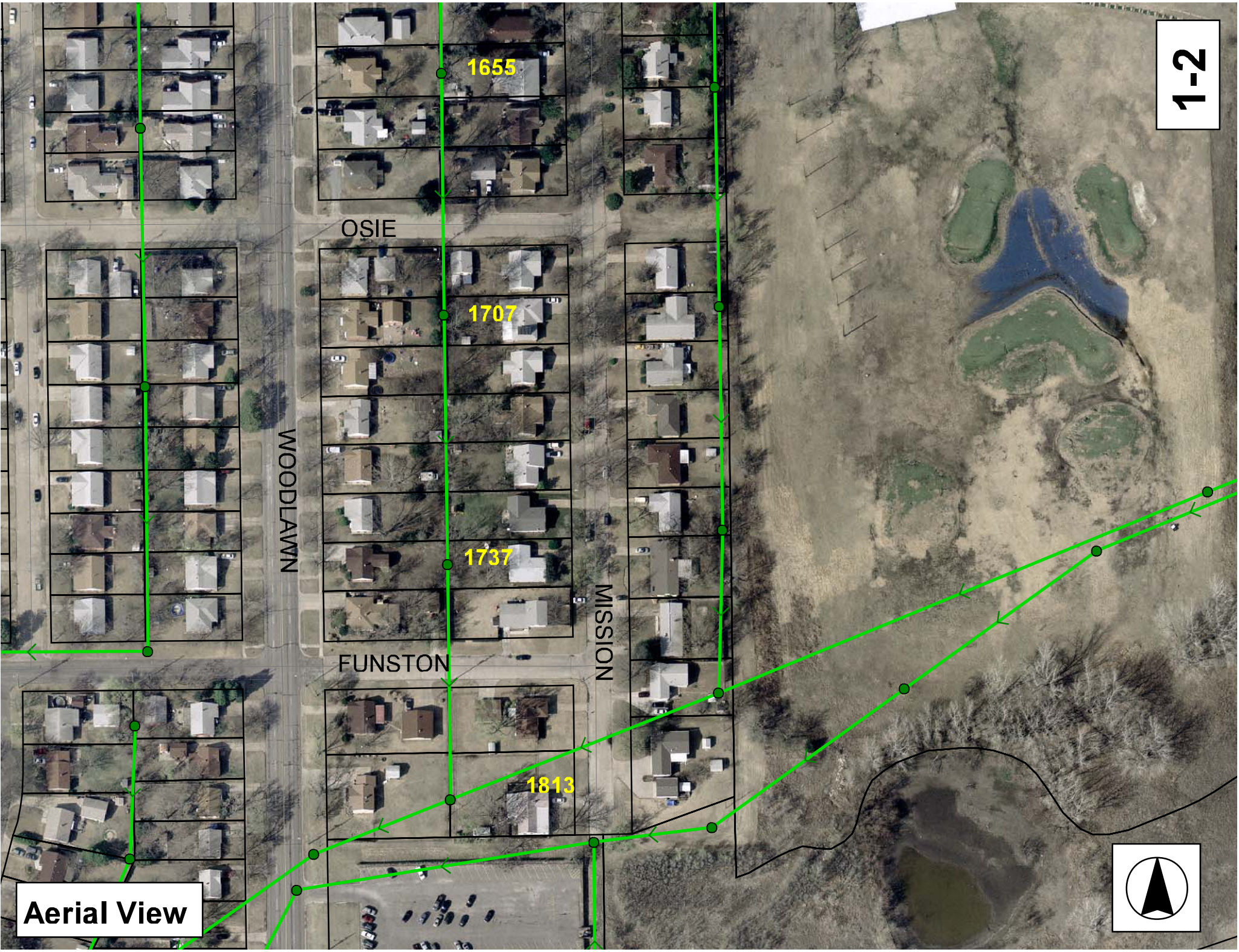
MH # 5945-040
 Replace Manhole Frame & Cover
 Approx depth = 13.6 ft

MH # 5945-039
 Replace Manhole Frame & Cover
 Remove & Replace MH Bench & Invert
 Approx depth = 10.9 ft

MH # 5945-016
 Replace Manhole Frame & Cover
 (see photograph for additional information concerning this manhole)

SITE 1





Aerial View



Television Inspection Master Report

5/29/2007
2:24 PM

US Structure: 5945-039 1737 S MISSION RD Date Insp: 9/14/2006 Basin: E01B1
DS Structure: 5945-016 1813 S MISSION RD Dir Televised: Upstream To Downstream

Pipe Information

Shape: Round Length Status: Project No.: G-129
Dia/Ht Width: 8 0 Material: VCP Index:
Length: 297.3 Slope: 0.404 Surface:

Inspection Information

Crew: 690 Percent Full: 15 Tape ID: DVD #0193
Weather: Sunny Purpose: TV Existing Line Counter Start:
Surface Cond: Trees, Fences, Buildings Flow: Normal Flow Counter Stop:

Obs. #	VTR Counter	Distance	Location	Description	Rating	Obsrvd (gpm)	Est. (gpm)	Ratings Struct	Clean	Remain (gpm)
1		0.0	US Manhole	5945-039	1		0.000	0	0	0.000
2		22.4	West	Wye Service	1		0.000	0	0	0.000
			1738 SOUTH WOOD LAWN							
3		25.8	East	Wye Service	3		0.000	0	0	0.000
			1737 SOUTH MISSION							
4		32.1	Upper Left	Broken Pipe	4		0.000	0	0	0.000
5		34.0	Upper Left	Crack-Horizontal	3		0.000	0	0	0.000
6		50.2	Upper Left	Crack-Horizontal	3		0.000	0	0	0.000
7		55.7	Joint	Roots	3		0.008	5	8	0.008
8		59.0	Crown	Broken Pipe	4		0.000	0	0	0.000
9		76.5	Upper Left	Crack-Horizontal	3		0.000	0	0	0.000
10		80.7	Upper Left	Crack-Horizontal	3		0.000	0	0	0.000
11		83.4	West	Wye Service	1		0.000	0	0	0.000
			1744 SOUTH WOOD LAWN							
12		83.4	Upper Left	Crack-Horizontal	3		0.000	0	0	0.000
13		86.4	East	Wye Service	2		0.000	0	0	0.000
			6422 EAST FUNSTON, CONNECTION CRACKED ROOTS							
14		86.5	Upper Left	Crack-Horizontal	3		0.000	0	0	0.000
15		218.0	West	Wye Service	1		0.000	0	0	0.000
			1802 SOUTH WOOD LAWN							
16		220.8	East	Wye Service	1		0.000	0	0	0.000
			1801 SOUTH MISSION							
17		263.4	West	Wye Service	1		0.000	0	0	0.000
			1812 SOUTH WOOD LAWN							
18		279.6	Start	Sag begins	4		0.000	10	0	0.000
19		288.5	Upper Right	Debris	5		0.000	0	75	0.000

CAMERA WON'T PASS. THIS IS AT THE DROP MANHOLE. LINE HAS LOTS OF HORIZONTAL CRACKS.

The pipe has fallen vertically at a joint near the outside drop hole. There is a cavity and a lot of pipe missing. Need to replace the downstream 10 lf of pipe and probably the outside drop as well.

See photos.

1-3



Standing south of MH 5945-016, looking north.

Replace Manhole Frame & Cover:

Contractor shall rework the stack/cone, per City Spec and put a concrete seal around the outside of the manhole stack, extending concrete seal to a minimum of 12" below ground level.