

MH # 5846-267
Replace Manhole Frame & Cover
Remove & Replace MH Bench & Invert
Approx depth = 7.1 ft

SEE TV LOGS FOR MORE INFO
ON THE CLEANOUTS AND CAPPED PIPE

2-1

5846-271E (Capped End Pipe)
Construct a Manhole where the capped
pipe is located

5846-271CO (Cleanout)
Construct a Manhole where the cleanout
is located (cleanout not found)

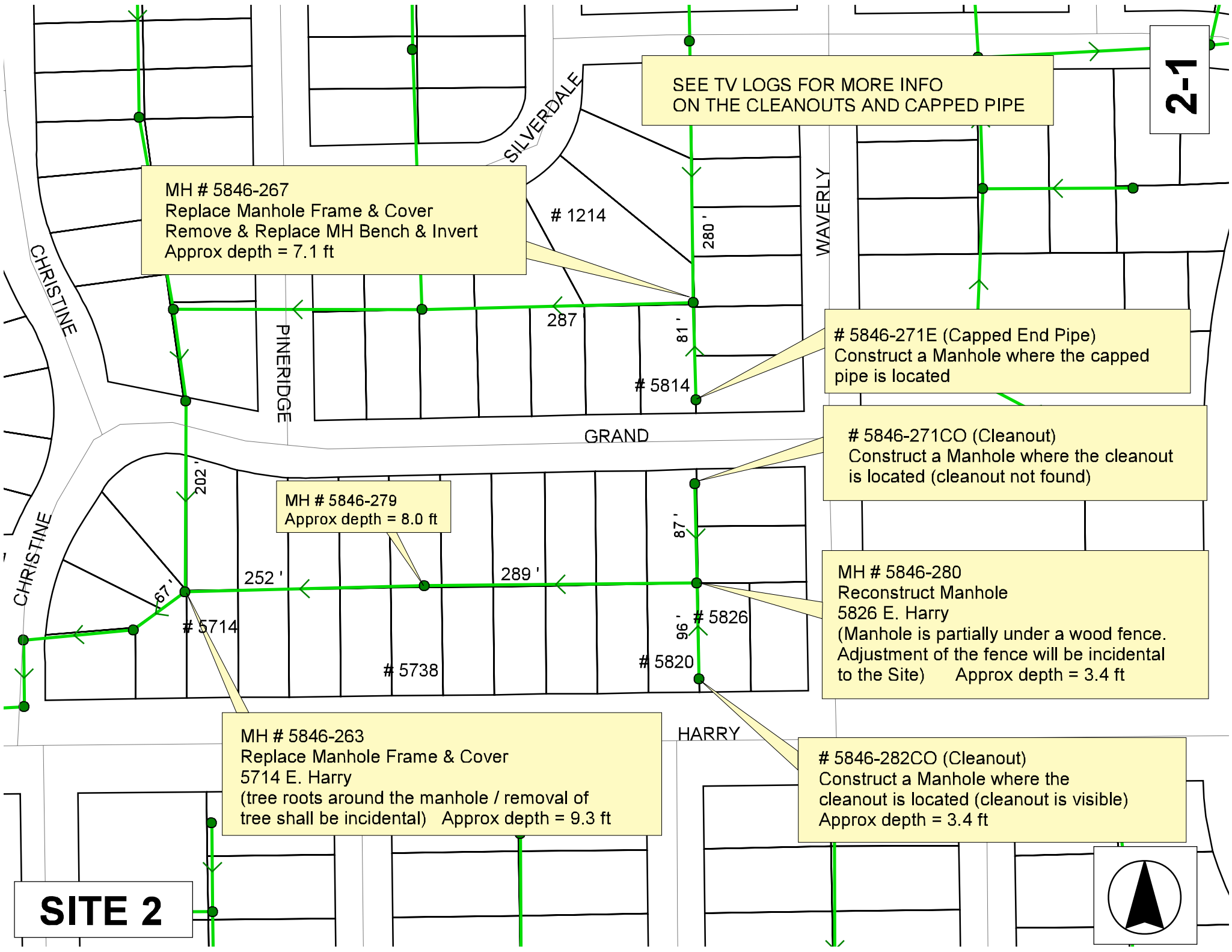
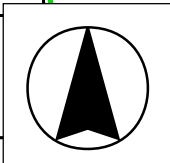
MH # 5846-279
Approx depth = 8.0 ft

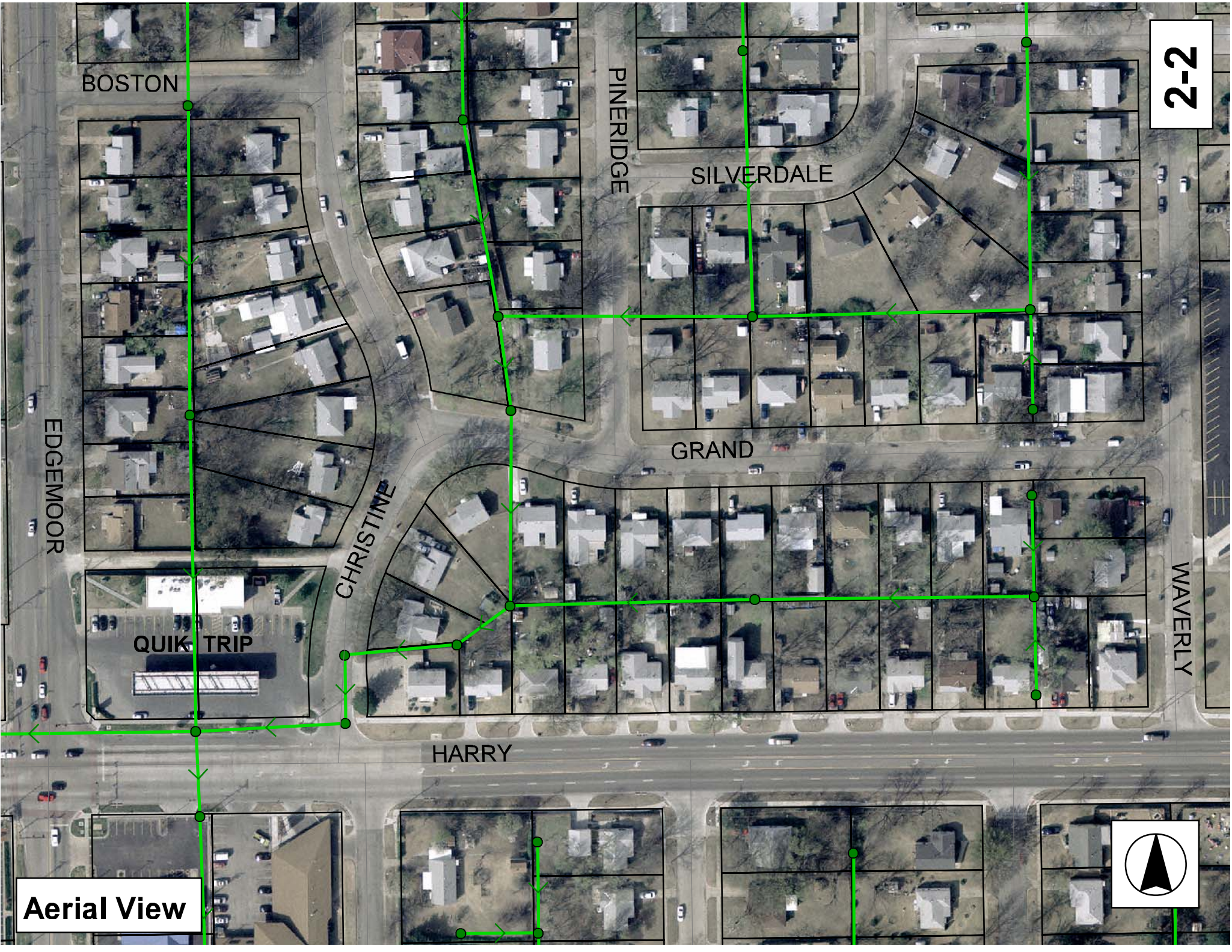
MH # 5846-280
Reconstruct Manhole
5826 E. Harry
(Manhole is partially under a wood fence.
Adjustment of the fence will be incidental
to the Site) Approx depth = 3.4 ft

MH # 5846-263
Replace Manhole Frame & Cover
5714 E. Harry
(tree roots around the manhole / removal of
tree shall be incidental) Approx depth = 9.3 ft

5846-282CO (Cleanout)
Construct a Manhole where the
cleanout is located (cleanout is visible)
Approx depth = 3.4 ft

SITE 2





Aerial View



Television Inspection Master Report

5/30/2007
10:46 AM

US Structure: 5846-271E
DS Structure: 5846-267

5814 GRAND AV
1214 SILVERDALE CT

Date Insp: 3/6/2006

Basin: E04A

Dir Televised: Downstream To Upstream

Pipe Information

Shape:	Round	Length Status:	TV Inspections VCP	Project No.:	F-176
Dia/Ht	Width: 8	Material:		Index:	
Length:	81.0	Slope:	0.123	Surface:	

Inspection Information

Crew:	694	Percent Full:		Tape ID:	DVD #0154
Weather:	Sunny	Purpose:	TV Existing Line	Counter Start:	10:04
Surface Cond:	Trees & Fences	Flow:		Counter Stop:	

Obs. VTR

#	Counter	Distance	Location	Description	Rating	Obsrvd (gpm)	Est. (gpm)	Ratings Struct	Clean	Remain (gpm)
1	00:00:00	0.0	DS Manhole	5846-267	1					
	REMARK: 1214 S. SILVERDALE / AGAINST THE FLOW									
2	00:00:00	26.5	Invert	Sag begins	2					
3	00:00:00	32.0	Upper Left	Roots	2					
4	00:00:00	35.0	Upper Right	Roots	2					
5	00:00:00	37.6	East	Wye Service	5					
	REMARK: 1223 S. WAVERLY / ROOTS									
6	00:00:00	38.3	Upper Left	Roots	3					
7	00:00:00	41.3	Upper Left	Roots	4					
8	00:00:00	44.2	Crown	Roots	3					
9	00:00:00	47.6	Crown	Roots	2					
10	00:00:00	50.4	Crown	Roots	3					
11	00:00:00	53.4	Upper Left	Roots	2					
12	00:00:00	56.5	Upper Left	Roots	3					
13	00:00:00	58.5		Stopped Inspection	5					
	REMARK: STOPPED DUE TO ROOTS									
14	00:00:00	59.0	East	Wye Service	5					
	REMARK: FACES 1239 S. WAVERLY / BALL OF ROOTS / ACTIVE????									

Obs. VTR

#	Counter	Distance	Location	Description	Rating	Obsrvd (gpm)	Est. (gpm)	Ratings Struct	Clean	Remain (gpm)
1	00:00:00	0.0		Continued Inspection after roots removed:						
3	00:00:00	60.1	Upper Right	Roots	3					
4	00:00:00	62.9	Crown	Roots	3					
5	00:00:00	77.5	East	Wye Service	2					
	REMARK: 1239 S. WAVERLY / ROOTS (this is definitely active service)									
6	00:00:00	81.1		US End (capped end-pipe / nothing visible at the surface)						

2-3

Television Inspection Master Report

5/30/2007
10:46 AM

US Structure: 5846-282CO 5820 E HARRY ST **Date Insp:** 1/19/2007 **Basin:** E04A
DS Structure: 5846-280 5826 E HARRY ST **Dir Televised:** Downstream To Upstream

Pipe Information

Shape: Round Length Status: Project No.: F-176
Dia/Ht Width: 8 0 Material: VCP Index:
Length: 96.8 Slope: 0.103 Surface:

Inspection Information

Crew: 692 Percent Full: Tape ID: DVD #0235
Weather: Sunny Purpose: TV Existing Line Counter Start:
Surface Cond: Trees & Fences Flow: Normal Flow Counter Stop:

Obs. #	VTR Counter Comment	Distance	Location	Description	Rating	Obsrvd (gpm)	Est. (gpm)	Ratings Struct	Clean	Remain (gpm)
1		1.2	DS Manhole	5846-280 / tv against the flow		0.000				
2		3.0	Joint	Offset	2		0.000	0	0	0.000
3		6.4	Joint	Roots	1		0.002	1	1	0.002
4		9.4	Joint	Offset	2		0.000	0	0	0.000
5		12.4	Joint	Roots	1		0.002	1	1	0.002
6		15.6	Joint	Roots	1		0.002	1	1	0.002
7		18.0	East	Break-In Conn	2		0.002	0	0	0.002
5826 E HARRY ROOTS										
8		24.6	Joint	Roots	1		0.002	1	1	0.002
9		24.6	Joint	Offset	2		0.000	0	0	0.000
10		27.4	Joint	Roots	1		0.002	1	1	0.002
11		27.4	Joint	Offset	3		0.010	20	0	0.010
12		30.3		Sealed Off Wye West	4		0.004	0	0	0.004
ROOTS										
13		30.3	Joint	Roots	2		0.004	2	4	0.004
14		33.8	Joint	Roots	3		0.008	5	8	0.008
15		33.8	Joint	Offset	2		0.000	0	0	0.000
16		36.6	Joint	Roots	2		0.004	2	4	0.004
17		39.7	Joint	Roots	3		0.008	5	8	0.008
18		42.6	Joint	Roots	2		0.004	2	4	0.004
19		45.8	Joint	Roots	1		0.002	1	1	0.002
20		48.7	Joint	Roots	1		0.002	1	1	0.002
21		51.8	Joint	Roots	1		0.002	1	1	0.002
22		54.7	Joint	Roots	3		0.008	5	8	0.008
23		57.4	Joint	Roots	1		0.002	1	1	0.002
24		57.4	Joint	Offset	2		0.000	0	0	0.000
25		60.8	Joint	Roots	2		0.004	2	4	0.004
26		60.8	Joint	Offset	2		0.000	0	0	0.000
27		66.5	Joint	Roots	2		0.004	2	4	0.004
28		73.0	Possible Sealoff?	Sealed Off Wye West	4		0.004	0	0	0.004
BALL OF ROOTS										
29		75.8	Joint	Roots	2		0.004	2	4	0.004
30		85.0	Joint	Roots	1		0.002	1	1	0.002
31		85.0	Joint	Offset	2		0.000	0	0	0.000
32		87.8	Joint	Offset	2		0.000	0	0	0.000
33		90.8	Joint	Offset	3		0.010	20	0	0.010
34		95.4		US Cleanout 5846-282CO / cleanout is visible at the surface						

2-4

Television Inspection Master Report

5/30/2007
10:46 AM

E04A

US Structure: 5846-281CO
DS Structure: 5846-280

5826 E HARRY ST

Date Insp: 1/18/2007 Basin:
Dir Televised: Downstream To Upstream

Pipe Information

Shape: Round Length Status: TV Inspections Project No.: F-176
Dia/Ht Width: 8 Material: VCP Index:
Length: 87.0 Slope: 0.115 Surface:

Inspection Information

Crew: 692 Percent Full: Tape ID: DVD #0235

Obs. #	VTR Counter	Distance	Location	Description	Rating	Obsrvd (gpm)	Est. (gpm)	Ratings		
								Struct	Clean	Remain (gpm)
1		0.0	DS Manhole	5846-280 / TV AGAINST THE FLOW						
2		2.0	Joint	Roots	2	0.004		2	4	0.004
3		3.0	Joint	Offset	3	0.010		20	0	0.010
5		7.7	East	Wye Service / Roots	4	0.000		60	0	0.000
6		7.7	Joint	Roots	1	0.002		1	1	0.002
7		10.3	Joint	Roots	1	0.002		1	1	0.002
8		12.9	Joint	Roots	2	0.004		2	4	0.004
9		16.8	Start	Sag	1	0.000		1	0	0.000
10		19.4	Joint	Roots	1	0.002		1	1	0.002
11		22.4	Joint	Roots	2	0.004		2	4	0.004
12		22.4	Joint	Offset	2	0.000		0	0	0.000
13		25.3	Joint	Roots	1	0.002		1	1	0.002
14		25.3	Joint	Offset	2	0.000		0	0	0.000
15		25.3	End	Sag	1	0.000		1	0	0.000
16		28.6	West	Wye Service / Roots	2	0.000		0	0	0.000
17		29.9	East	Break-In Conn	3	0.004		2	0	0.004
18		31.6	Joint	Offset	2	0.000		0	0	0.000
19		34.8	Joint	Offset	3	0.010		20	0	0.010
20		37.5	Joint	Offset	2	0.000		0	0	0.000
21		40.4	Joint	Offset	2	0.000		0	0	0.000
22		43.3	Joint	Offset	3	0.010		20	0	0.010
23		49.6	Joint	Offset	2	0.000		0	0	0.000
24		52.4	Joint	Roots	2	0.004		2	4	0.004
25		52.4	Joint	Offset	2	0.000		0	0	0.000
26		55.2	Joint	Roots	2	0.004		2	4	0.004
27		55.2	Joint	Offset	2	0.000		0	0	0.000
28		58.3	Joint	Roots	3	0.008		5	8	0.008
29		58.3	Joint	Offset	2	0.000		0	0	0.000
30		61.4	Joint	Roots	2	0.004		2	4	0.004
31		64.7	Joint	Roots	3	0.008		5	8	0.008
32		64.7	Joint	Offset	3	0.010		20	0	0.010
33		67.1	Joint	Roots / Heavy	4	0.010		10	25	0.010
34		70.9	Joint	Roots	2	0.004		2	4	0.004
35		73.5	Possible Sealoff?	Wye West	5	0.005		0	0	0.005
LARGE ROOT BALL										
36		73.6	Joint	Roots	3	0.008		5	8	0.008
37		75.9	East	Break-In Conn	5	0.010		400	0	0.010
1247 S WAVERLY / FULL OF ROOTS										
38		78.0	Joint	Roots / Heavy	4	0.010		10	25	0.010
39		79.2	Joint	Roots	2	0.004		2	4	0.004
40		86.2		Debris	5	0.000		0	75	0.000
41		86.2	Upstream Cleanout 5846-281CO?							

NOT SURE IF WE ARE ALL THE WAY TO THE CLEANOUT OR NOT. TOO MUCH DEBRIS & ROOTS TO SEE. LENS IS DIRTY. CLEANOUT WAS NOT FOUND

2-5

Television Inspection Master Report

5/30/2007
10:46 AM

US Structure: 5846-280
DS Structure: 5846-279

5826 E HARRY ST

Date Insp: 1/18/2007
Dir Televised: Upstream To Downstream

Basin: E04A

Pipe Information

Shape: Round Length Status: Project No.: F-176
Dia/Ht Width: 8 0 Material: VCP Index:
Length: 289.2 Slope: 0.100 Surface:

Inspection Information

Crew: 692 Percent Full: Tape ID: DVD #0235
Weather: Sunny Purpose: TV Existing Line Counter Start:
Surface Cond: Trees & Fences Flow: Normal Flow Counter Stop:

Obs. VTR

#	Counter	Distance	Location	Description	Rating	Obsrvd (gpm)	Est. (gpm)	Ratings		
								Struct	Clean	Remain (gpm)
1		0.0	US Manhole	5846-280	1	0.000	0	0	0.000	
2		3.0	Joint	Roots	1	0.002	1	1	0.002	
3		6.9	Joint	Roots	1	0.002	1	1	0.002	
4		9.9	Joint	Roots	1	0.002	1	1	0.002	
5		12.9	Joint	Roots	1	0.002	1	1	0.002	
6		17.4	Roots	Sealed Off Wye North	4	0.004	0	0	0.004	
7		19.3	Joint	Roots	2	0.004	2	4	0.004	
8		20.5	Rootball / possibly sealed?	Sealed Off Wye South						
9		21.7	Joint	Roots	2	0.004	2	4	0.004	
10		24.8	Joint	Roots	2	0.004	2	4	0.004	
11		27.8	Joint	Roots	2	0.004	2	4	0.004	
12		31.0	Joint	Roots	3	0.008	5	8	0.008	
13		33.9	Joint	Roots	1	0.002	1	1	0.002	
14		36.9	Joint	Roots	3	0.008	5	8	0.008	
15		40.4	Joint	Roots	3	0.008	5	8	0.008	
16		42.8	Joint	Roots	2	0.004	2	4	0.004	
17		46.2	Joint	Roots	1	0.002	1	1	0.002	
18		49.3	Joint	Roots	1	0.002	1	1	0.002	
19		52.1	Joint	Roots	2	0.004	2	4	0.004	
20		56.7	Joint	Roots	3	0.008	5	8	0.008	
21		58.9	Joint	Roots	3	0.008	5	8	0.008	
22		61.5	Joint	Roots	3	0.008	5	8	0.008	
23		64.0	Joint	Roots	3	0.008	5	8	0.008	
24		65.3	North	Wye Service	4	0.000	60	0	0.000	
5821 E GRAND / FULL OF ROOTS										
25		67.1	Joint	Roots	3	0.008	5	8	0.008	
26		69.1	South	Wye Service	2	0.000	0	0	0.000	
5820 E HARRY / ROOTS										
27		70.2	Joint	Roots	2	0.004	2	4	0.004	
28		73.2	Joint	Roots	2	0.004	2	4	0.004	
29		73.2	Joint	Offset	2	0.000	0	0	0.000	
30		76.4	Joint	Roots	2	0.004	2	4	0.004	
31		79.3	Joint	Roots	1	0.002	1	1	0.002	
32		85.3	Joint	Roots	1	0.002	1	1	0.002	

THIS LOG PROVIDED FOR REFERENCE ONLY, SHOWING 5821 GRAND AND 5820 HARRY MAY POSSIBLY BE TAPPED TO THE EAST/WEST SEWER MAIN.