

Remove and Replace 663 lf of 8" Pipe from MH 5450-356 to MH 5450-002
Remove and Replace Approximately 665 lf of Pavement

MH # 5450-002
Replace Manhole Frame & Cover
Approx pipe depth = 9.0 ft
Approx MH depth = 10.8 ft

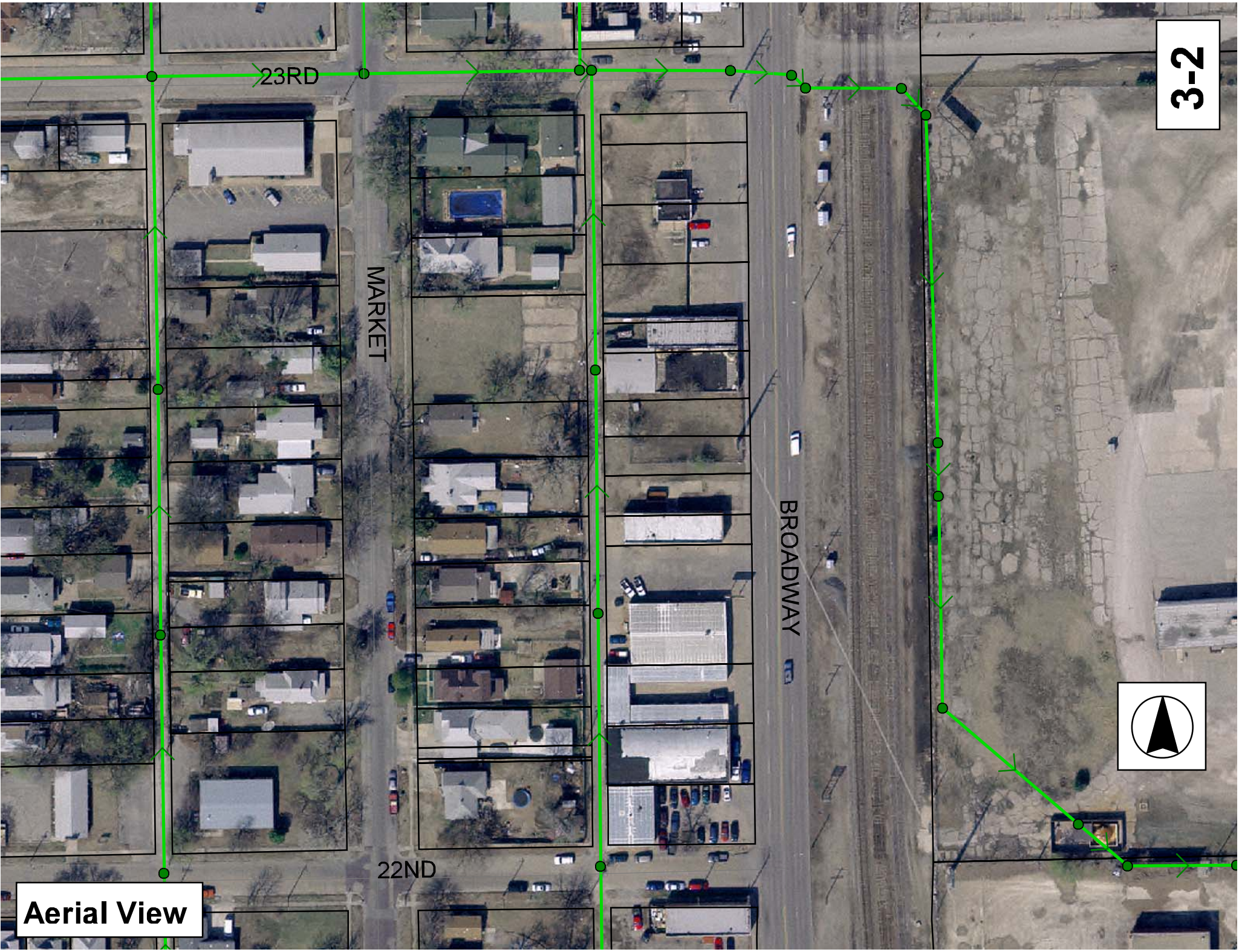
MH # 5450-353
Replace Manhole Frame & Cover
Approx depth = 8.4 ft

MH # 5450-354
Replace Manhole Frame & Cover
Approx depth = 8.2 ft

MH # 5450-356
Approx depth = 7.0 ft

SITE 3





23RD

MARKET

BROADWAY

22ND

Aerial View

Television Inspection Master Report

5/24/2007
2:50 PM

US Structure: 5450-356
DS Structure: 5450-354

2305 N BROADWAY AVE

Date Insp: 4/2/2007
Dir Televised: Up->Down

Basin: C04C

Pipe Information

Shape: Round Length Status: VCP Project No.: D-046
Dia/Ht Width: 8 Material: Index:
Length: 210.0 Slope: 0.199 Surface:

Inspection Information

Crew: 692 Percent Full: Tape ID: DVD #0267
Weather: Sunny Purpose: TV Existing Line Counter Start:
Surface Cond: N/A Flow: Normal Flow Counter Stop:

Obs. #	VTR Counter	Distance	Location	Description	Rating	Obsrvd (gpm)	Est. (gpm)	Ratings Struct	Clean	Remain (gpm)	
1		0.0	US Manhole	5450-356	1						
2		0.0	Lower Left	Broken Pipe	2						
3		3.0	Joint	Offset	3						
4		7.1	Lower Left	Crack-Radial	3						
	OFFSET										
5		14.3	Lower Left	Crack-Radial	3						
6		19.5	Joint	Offset	3						
7		24.4	Joint	Offset	3						
8		27.0	Joint	Offset	3						
9		29.5	Joint	Offset	3						
10		34.7	Upper Left	Crack-Radial	2						
	OFFSET										
11		37.3	Upper Left	Crack-Radial	3						
12		39.6	Joint	Offset	3						
13		42.0	Joint	Offset	3						
14		44.5	Joint	Offset	3						
15		52.4	Joint	Offset	3						
16		54.8	East	Break-In Conn	3						
	NOT SEALED AT MAIN / CAVITY / MAY BE INACTIVE, BUT FACES 2303 N. BRDWY										
17		54.8	Joint	Offset	3						
18		58.3	East	Break-In Conn	1						
	GREASE / FACES 2303 N. BRDWY										
19		59.9	Lower Left	Crack-Radial	2						
20		64.9	Joint	Gapped Joint	4						
21		70.2	Joint	Offset	3						
22		70.3	West	Break-In Conn	3						
	BROKEN PIPE. NEEDS REPAIRED / NO ADDRESS GIVEN, BUT APPEARS TO BE ACTIVE TAP										
23		72.6	Crown	Broken Pipe	4						
24		75.2	Joint	Offset	3						
25		77.6	Joint	Offset	3						
26		80.0	Joint	Offset	3						
27		87.7	Joint	Offset	3						
28		93.2	Upper Left	Broken Pipe	2						
29		94.4	East	Sealed Off Wye	5						
	CAP BROKEN W/CAVITY AND MOUSE.										
30		95.9	Underground Union / broken /	SINK HOLE IN ALLEY (union to be repaired by Sewer Maintenance)							

3-3

Television Inspection Master Report

5/24/2007
2:50 PM

POINT REPAIR BY SEWER MAINTENANCE FROM 96' N. OF MH 5450-356 TO 99' N. OF MH 5450-356 TO REMOVE DAMAGED UNDERGROUND UNION THAT WAS NO LONGER NEEDED. WORK COMPLETED 04-27-2007 TGC

US Structure: 5450-356 2305 N BROADWAY AVE **Date Insp:** 4/2/2007 **Basin:** C04C
DS Structure: 5450-354 **Dir Televised:** Up->Down

2	97.5	Joint	Offset	3
3	101.5	West	Break-In Conn	1
Active / No address given by televisor				
4	102.7	Lower Left	Crack-Radial	3
5	107.5	Joint	Offset	3
6	110.2	Joint	Offset	3
7	112.6	Joint	Offset	3
8	114.4	East	Break-In Conn	1
2311 N. Broadway				
9	117.9	Joint	Offset	3
10	119.8	East	Sealed Off Wye	1
11	120.5	Joint	Offset	3
12	122.3	West	Sealed Off Wye	1
13	122.4	Upper Right	Broken Pipe	3
14	125.5	Joint	Offset	3
15	128.2	Joint	Offset	3
16	130.1	West	Break-In Conn	3
2316 N. Market				
17	130.7	Joint	Offset	3
18	135.7	Lower Left	Crack-Radial / Offset	3
19	138.2	Upper Left	Crack-Radial / Offset	2
20	140.6	Lower Left	Crack-Radial / Offset	3
21	143.2	Joint	Offset	3
22	144.9	East	Sealed Off Wye	1
23	145.8	Joint	Offset	3
CRACK				
24	147.4	West	Wye Service	1
2318 N. Market				
25	148.2	Crown	Crack-Radial	2
26	149.4	East	Break-In Conn	2
2315 N. Broadway				
27	153.3	Joint	Offset	3
28	155.7	Joint	Offset	3
29	158.6	Joint	Offset	3
30	161.0	Joint	Offset	3
31	166.0	Joint	Offset	3
32	168.6	Joint	Offset	3
33	170.3	East	Sealed Off Wye	5
CAP BROKEN W/CAVITY				
34	171.0	Crown	Crack-Radial	1
35	172.9	West	Sealed Off Wye	5
CAP BROKEN W/CAVITY				
36	173.5	Invert	Crack-Radial	2
37	176.0	Joint	Offset	3
38	178.6	Joint	Offset	3
39	188.7	Joint	Offset	3
CRACKS				
40	195.4	East	Sealed Off Wye	5
CAP BROKEN W/CAVITY				
41	196.8	West	Break-In Conn	1
2320 N. Market				
42	201.2	Joint	Offset	3
43	203.7	Lower Right	Crack-Radial	1
44	209.3	DS Manhole	5450-354	1

Television Inspection Master Report

5/24/2007
2:50 PM

US Structure: 5450-354 2315 N BROADWAY ST **Date Insp:** 4/3/2007 **Basin:** C04C
DS Structure: 5450-353 2339 N BROADWAY ST **Dir Televised:** Up->Down

Pipe Information

Shape: Round Length Status: Project No.: D-046
Dia/Ht Width: 8 0 Material: VCP Index:
Length: 203.0 Slope: 0.202 Surface:

Inspection Information

Crew: 692 Percent Full: Tape ID: DVD #0267
Weather: Cloudy Purpose: TV Existing Line Counter Start:
Surface Cond: N/A Flow: Normal Flow Counter Stop:

Obs. #	VTR Counter	Distance	Location	Description	Rating	Obsrvd (gpm)	Est. (gpm)	Ratings	
								Struct	Clean
1		0.8	US Manhole		1				
2		1.2	Lower Right	Broken Pipe	3				
3		3.0	East	Break-In Conn	2				
4		No address mentioned							
4		6.0	Lower Right	Broken Pipe	3				
		OFFSET							
5		7.8	Joint	Offset	3				
6		10.1	Joint	Offset	3				
7		12.0	East	Wye Service	1				
8		No address mentioned							
8		12.6	Joint	Offset	3				
		CRACK							
9		14.8	West	Sealed Off Wye	5				
10		15.2	Invert	Crack-Radial	3				
		OFFSET							
11		17.8	Joint	Offset	3				
12		20.3	Joint	Offset	3				
13		22.7	Joint	Offset	3				
14		25.2	Joint	Offset	3				
15		27.7	Joint	Offset	3				
16		30.2	Joint	Offset	3				
17		30.8	West	Break-In Conn	2				
		CRACKS. No address given							
18		32.3	Joint	Offset	3				
19		35.1	Joint	Offset	3				
		CRACKS.							
20		36.8	East	Sealed Off Wye	2				
		CAP BROKEN W/CAVITY							
21		39.5	West	Sealed Off Wye	1				
		CAP BROKEN W/CAVITY							
22		40.0	Joint	Offset	3				
23		42.6	Joint	Offset	3				
24		45.2	Joint	Offset	3				
25		47.7	Upper Left	Broken Pipe	3				
		OFFSET							
26		50.2	Crown	Crack-Radial	2				
		OFFSET							
27		52.6	Joint	Offset	3				

3-5

Television Inspection Master Report

5/24/2007
2:50 PM

US Structure: 5450-354 2315 N BROADWAY ST Date Insp: 4/3/2007 Basin: C04C
DS Structure: 5450-353 2339 N BROADWAY ST Dir Televised: Up->Down

28	54.9	Joint	Offset	3
29	57.4	Joint	Offset	3
30	59.7	Joint	Offset	3
31	60.4	East	Wye Service	3
	2323 N. Broadway			
32	62.4	Joint	Offset	3
33	64.0	West	Sealed Off Wye	1
	CAP BROKEN W/CAVITY			
34	65.2	Lower Right	Crack-Radial	1
	OFFSET			
35	67.3	Joint	Offset	3
36	72.3	Joint	Offset	3
	CRACKS			
37	75.0	West	Break-In Conn	4
	BROKEN PIPE. / 2324 N. Market			
38	77.3	Joint	Offset	3
39	79.7	Joint	Offset	3
40	84.7	Lower Left	Crack-Radial	3
	OFFSET			
41	86.8	East	Wye Service	3
	FACES A VACANT LOT / Not sealed at the main			
42	87.1	Joint	Offset	3
43	89.1	West	Sealed Off Wye	5
	CAP BROKEN W/CAVITY			
44	89.6	Joint	Offset	3
45	92.2	Joint	Offset	3
46	94.7	Joint	Offset	3
47	97.2	Joint	Offset	3
48	99.7	Joint	Offset	3
49	102.2	Joint	Offset	3
50	107.0	Joint	Gapped Joint	3
51	111.5	East	Wye Service	4
	VACANT LOT			
52	112.0	Joint	Offset	3
	CRACK			
53	113.9		Sealed Off Wye North	2
	CAP BROKEN W/CAVITY			
54	114.6	Joint	Offset	4
	CRACKS.			
55	117.1	Crown	Broken Pipe	4
56	119.8	Joint	Roots	1
57	122.0	Joint	Offset	3
58	124.7	Joint	Roots	2
59	125.9	West	Break-In Conn	5
	BROKEN PIPE / ROOTS / 2330 N. Market (needs replaced)			
60	127.2	Lower Left	Crack-Horizontal	4
	ROOTS			
61	128.5		Sag	2
62	129.5	Joint	Roots	1
63	132.3	Joint	Roots	1
64	133.7		Sag	2
65	134.5	Joint	Offset	3
	ROOTS			
66	136.0	East	Sealed Off Wye	4
	CAP BROKEN W/CAVITY/ROOTS			

Television Inspection Master Report

5/24/2007
2:50 PM

US Structure: 5450-354 2315 N BROADWAY ST **Date Insp:** 4/3/2007 **Basin:** C04C
DS Structure: 5450-353 2339 N BROADWAY ST **Dir Televised:** Up->Down

67		136.9	Joint	Offset	4
	ROOTS				
68		138.6	West	Sealed Off Wye	4
	CAP BROKEN W/CAVITY				
69		139.6		Sag	2
70		139.6	Joint	Roots	2
71		142.1	Joint	Offset	4
	CRACKS.				
72		144.4	Joint	Offset	3
	CRACKS				
73		147.0		Sag	1
74		147.0	Joint	Gapped Joint	3
	CRACKS				
75		149.4	Joint	Offset	3
76		151.9	Joint	Offset	3
77		154.6	Crown	Crack-Radial	4
78		156.7	Joint	Roots	1
79		161.1	East	Wye Service	1
	VACANT LOT / not sealed at the main				
80		163.5	West	Sealed Off Wye	1
81		164.0	Joint	Offset	3
82		165.5	West	Break-In Conn	3
	2334 N. Market				
83		166.7	Joint	Offset	3
	CRACK				
84		171.6	Upper Left	Crack-Radial	1
85		173.9	Joint	Offset	3
86		176.4	Joint	Offset	3
	ROOTS				
87		178.7	Upper Left	Crack-Radial	3
	OFFSET				
88		185.7	East	Wye Service	1
	2339 N. Broadway				
89		186.2	Upper Right	Broken Pipe	3
	MISSING PIPE AT JOINT				
90		188.0	West	Sealed Off Wye	3
	CAP BROKEN W/CAVITY				
91		188.9	Joint	Offset	3
	CRACKS.				
92		192.1	Upper Left	Crack-Radial	3
	ROOTS				
93		196.5	Upper Right	Broken Pipe	5
	PIPE MISSING / hole in east side of pipe / hole in west side of pipe has loose tile sticking out				
94		199.0	DS Manhole	5450-353	

Television Inspection Master Report

5/24/2007
2:50 PM

US Structure: 5450-353
DS Structure: 5450-002

2339 N BROADWAY ST
2401 N BROADWAY ST

Date Insp: 4/3/2007
Dir Televised: Upstream To Downstream

Basin: C04C

Pipe Information

Shape: Round Length Status: VCP Project No.: D-046
Dia/Ht Width: 8 Material: Index:
Length: 250.0 Slope: 0.200 Surface:

Inspection Information

Crew: 692 Percent Full: Tape ID: DVD #0267
Weather: Cloudy Purpose: TV Existing Line Counter Start:
Surface Cond: N/A Flow: Normal Flow Counter Stop:

Obs. #	VTR Counter	Distance	Location	Description	Rating	Obsrvd (gpm)	Est. (gpm)	Ratings		
								Struct	Clean	Remain (gpm)
1		0.0	US Manhole	5450-353	5		0.000	0	0	0.000
			2339 N BROADWAY PIPE MISSING FROM TROUGH							
2		1.3	Upper Right	Broken Pipe	3		0.010	60	0	0.010
3		4.0	Invert	Crack-Radial	2		0.002	2	0	0.002
4		6.3	Joint	Offset	5		0.060	100	0	0.060
5		8.2	East	Wye Service	1		0.000	0	0	0.000
			Faces 2339 N. Broadway but may not be active							
6		8.8	Joint	Offset	4		0.030	60	0	0.030
7		10.9	West	Sealed Off Wye	1		0.000	0	0	0.000
8		11.4	Joint	Offset & cracks	3		0.010	20	0	0.010
9		14.0	Upper Right	Crack-Radial	2		0.002	2	0	0.002
10		16.6	Joint	Offset & cracks	3		0.010	20	0	0.010
11		17.3	Upper Left	Broken Pipe	3		0.010	60	0	0.010
12		19.2	Joint	Offset	3		0.010	20	0	0.010
13		21.4	Joint	Offset	3		0.010	20	0	0.010
14		23.8	Joint	Offset	3		0.010	20	0	0.010
15		26.5	Lower Left	Crack-Radial	3		0.004	5	0	0.004
16		28.9	Joint	Offset	3		0.010	20	0	0.010
17		31.3	Joint	Offset	3		0.010	20	0	0.010
18		33.3	East	Wye Service	4		0.000	60	0	0.000
			2341 N. Broadway (to be replaced by Sewer Maintenance)							
19		35.4	West	Sealed Off Wye	1		0.000	0	0	0.000
20		36.1	Joint	Offset & cracks	2		0.000	0	0	0.000
21		38.8	Joint	Offset	3		0.010	20	0	0.010
22		43.7	Offset Joint	Crack-Radial	1		0.001	1	0	0.001
23		46.2	Joint	Offset & cracks	3		0.010	20	0	0.010
24		48.7	Joint	Offset	3		0.010	20	0	0.010
25		53.5	Joint	Offset & cracks	4		0.030	60	0	0.030
26		57.9	East	Sealed Off Wye	4		0.004	0	0	0.004
			CAP BROKEN W/CAVITY							
27		58.6	Joint	Offset	3		0.010	20	0	0.010
28		60.4	West	Sealed Off Wye	4		0.004	0	0	0.004
			CAP BROKEN W/CAVITY							
29		61.1	Joint	Offset	3		0.010	20	0	0.010
30		63.8	Joint	Offset	3		0.010	20	0	0.010
31		66.2	Joint	Offset	3		0.010	20	0	0.010
32		68.6	Joint	Offset	5		0.060	100	0	0.060

3-8

Television Inspection Master Report

5/24/2007
2:50 PM

US Structure: 5450-353 2339 N BROADWAY ST Date Insp: 4/3/2007 Basin: C04C
DS Structure: 5450-002 2401 N BROADWAY ST Dir Televised: Upstream To Downstream

33	71.5	Invert	Crack-Radial	2	0.002	2	0	0.002
OFFSET								
34	76.3	Joint	Offset	3	0.010	20	0	0.010
35	78.6	Joint	Offset	5	0.060	100	0	0.060
POINT REPAIR								
36	81.1	Joint	Offset	5	0.060	100	0	0.060
37	83.0	East	Sealed Off Wye	5	0.005	0	0	0.005
CAP BROKEN W/CAVITY								
38	84.5	Joint	Offset	5	0.060	100	0	0.060
39	85.5	West	Sealed Off Wye	5	0.005	0	0	0.005
CAP BROKEN W/CAVITY								
40	91.6	Offset	Crack-Horizontal	1	0.001	1	0	0.001
41	93.6	Joint	Offset	5	0.060	100	0	0.060
42	101.0	Joint	Offset	5	0.060	100	0	0.060
43	103.8	West	Break-In Conn	5	0.010	400	0	0.010
BROKEN W/CAVITY / 2356 N. Market								
44	105.0	East	Break-In Conn	1	0.001	0	0	0.001
2345 N. Broadway (active)								
45	106.1	Offset	Crack-Radial	5	0.010	18	0	0.010
46	107.9	East	Sealed Off Wye	4	0.004	0	0	0.004
CAP BROKEN W/CAVITY								
47	110.1	West	Sealed Off Wye	5	0.005	0	0	0.005
CAP BROKEN W/CAVITY								
48	111.0	Joint	Offset	3	0.010	20	0	0.010
49	118.5	Lower Right	Broken Pipe	5	0.060	100	0	0.060
50	123.6	Offset	Crack-Radial	3	0.004	5	0	0.004
51	128.4	Offset	Crack-Radial	2	0.002	2	0	0.002
52	130.8	Joint	Offset	3	0.010	20	0	0.010
53	132.7	East	Wye Service	1	0.000	0	0	0.000
VACANT LOT / not sealed at the main								
54	135.2	West	Sealed Off Wye	5	0.005	0	0	0.005
CAP BROKEN W/CAVITY								
55	136.0	Offset	Crack-Radial	3	0.004	5	0	0.004
56	141.1	Joint	Offset	3	0.010	20	0	0.010
57	143.3	Joint	Offset	3	0.010	20	0	0.010
58	145.9	Joint	Offset	3	0.010	20	0	0.010
59	148.5	Joint	Offset & cracks	4	0.030	60	0	0.030
60	150.9	Joint	Offset	3	0.010	20	0	0.010
61	153.4	Joint	Offset	3	0.010	20	0	0.010
62	157.7	East	Sealed Off Wye	1	0.000	0	0	0.000
63	158.7	Upper Right	Crack-Radial	1	0.001	1	0	0.001
64	160.2	West	Wye Service	4	0.000	60	0	0.000
2358 N. Market								
65	160.8	Joint	Offset	3	0.010	20	0	0.010
66	163.5	Upper Right	Broken Pipe	4	0.030	78	0	0.030
67	165.9	Joint	Offset	3	0.010	20	0	0.010
68	168.4	Upper Right	Broken Pipe	4	0.030	78	0	0.030
69	170.7	Joint	Offset	3	0.010	20	0	0.010
70	173.4	Joint	Offset	4	0.030	60	0	0.030
71	175.8	Joint	Offset	3	0.010	20	0	0.010
72	179.9	East	Sealed Off Wye	1	0.000	0	0	0.000
CAP BROKEN W/CAVITY								
73	180.8		PVC begins	1	0.000	0	0	0.000
74	182.6	West	Break-In Conn	1	0.001	0	0	0.001
2358 N. Market / PVC								
75	186.0		PVC ends	1	0.000	0	0	0.000
76	188.3	Lower Right	Broken Pipe	3	0.010	60	0	0.010

Television Inspection Master Report

5/24/2007
2:50 PM

US Structure: 5450-353 2339 N BROADWAY ST Date Insp: 4/3/2007 Basin: C04C
DS Structure: 5450-002 2401 N BROADWAY ST Dir Televised: Upstream To Downstream

77	193.6	Joint	Offset	3	0.010	20	0	0.010	
78	195.7	Joint	Offset	2	0.000	0	0	0.000	
79	200.7	Joint	Offset	3	0.010	20	0	0.010	
80	204.8	East	Sealed Off Wye	5	0.005	0	0	0.005	
CAP BROKEN W/CAVITY									
81	206.1	Lower Left	Crack-Radial	2	0.002	2	0	0.002	
82	207.7	West	Sealed Off Wye	5	0.005	0	0	0.005	
CAP BROKEN W/CAVITY									
83	215.6	Offset	Broken Pipe	3	0.010	60	0	0.010	
84	218.1	Joint	Offset & crack	3	0.010	20	0	0.010	
85	223.3	Upper Right	Broken Pipe	3	0.010	60	0	0.010	
86	225.8	Joint	Offset	3	0.010	20	0	0.010	
87	231.0	Invert	Crack-Radial	1	0.001	1	0	0.001	
88	233.1	Joint	Offset	3	0.010	20	0	0.010	
89	235.7	Joint	Offset	3	0.010	20	0	0.010	
90	240.8	Crown	Broken Pipe	5	0.060	100	0	0.060	
91	243.1	DS Manhole	5450-002	1	0.000	0	0	0.000	

3-10