

**BENCHMARKS:**  
 BM #1: Cross on South West Corner of Lot 25 Block H, The Fairmont Addition.  
 Elev. = 204.61 (City Datum)  
 BM #2: "D" Cut on Curb at North East Entrance to Church of the Magdalen 2nd Addition.  
 Elev. = 190.48 (City Datum)

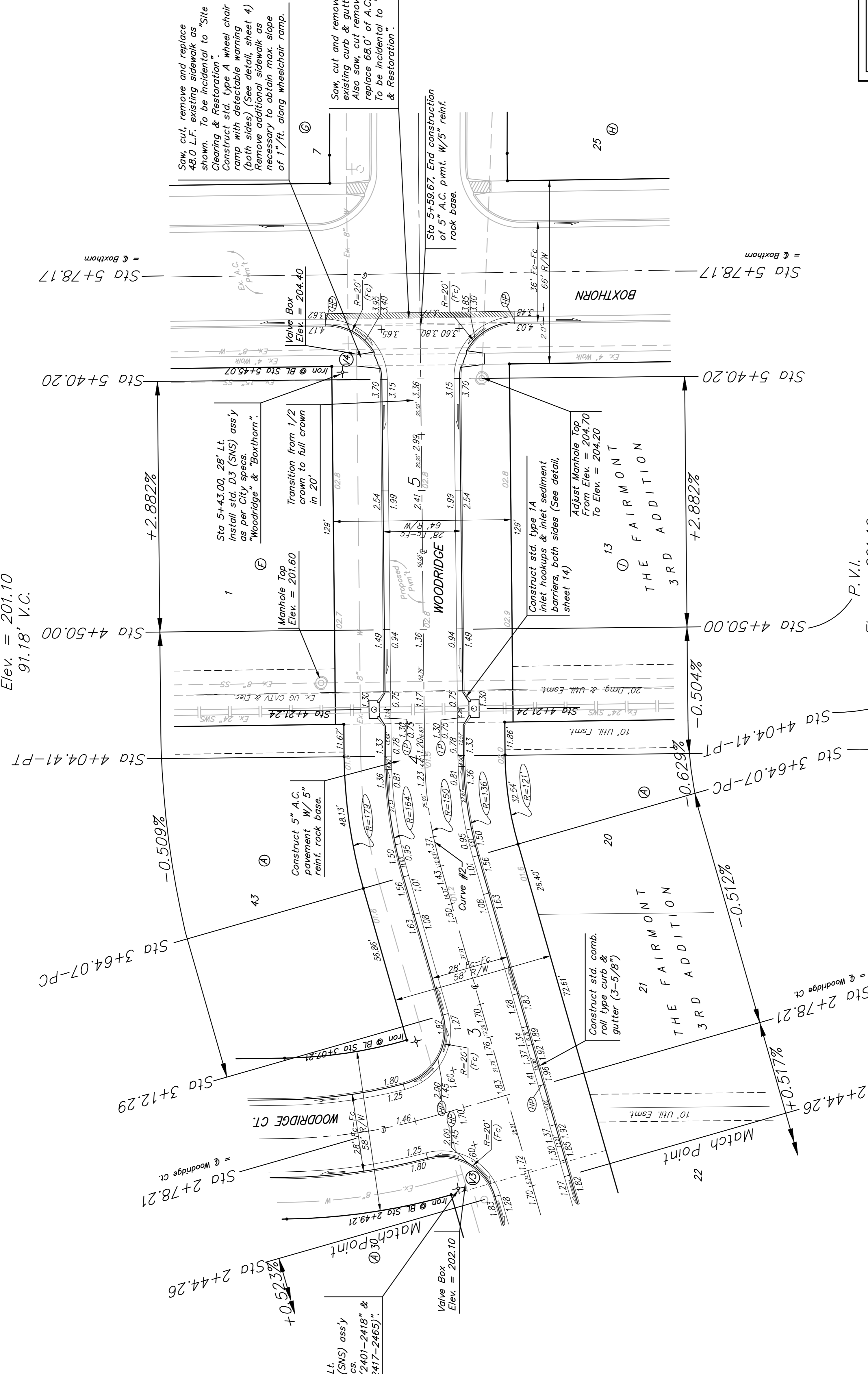
P.V.I. = 201.10  
 Elev. = 201.10  
 91.18' V.C.

P.V.I. = 201.56  
 Elev. = 201.56  
 No V.C.

P.V.I. = 202.00  
 Elev. = 202.00  
 30' V.C.

P.V.I. = 201.33  
 Elev. = 201.33  
 No V.C.

P.V.I. = 201.10  
 Elev. = 201.10  
 91.18' V.C.



Curve #2  
 Curve Data Based on Centerline

Station	Arc	FACE CHORD LENGTHS	T. Defl.
3+64.07	—	8' Lt.	0°00'00"
3+75.00	10.93'	12.53'	2°05'14"
4+00.00	25.00'	28.63'	4°46'27"
4+04.41	4.41'	5.06'	0°50'32"

**NOTE:**  
 ROLL TYPE CURB & GUTTER TO BE CONSTRUCTED ON THE PAVEMENT SHOWN ON THIS SHEET. TOP OF CURB ELEVATIONS ARE GIVEN FOR FULL HEIGHT CURB.

**THE FAIRMONT 3RD ADD. - PH. II**  
**WOODRIDGE CIR.**  
 STA 2+44.26 TO STA 5+78.17

Engineering Company, P.C., 11 Elm St., Suite 200, Boston, MA 02111, Tel: 617-552-2222, Fax: 617-552-2222  
 ENGINEERING | SURVEYING | PLANNING | LANDSCAPE ARCHITECTURE

PROJECT NUMBER: 472-24137  
 DESIGN: AID  
 APPROVED: TMS  
 DRAWN: TMS  
 DATE: 3/07

REVISIONS:  
 SCALE: Noted  
 SHEET: 6 OF 20

The Fairmont 3rd Add. 04-11E108