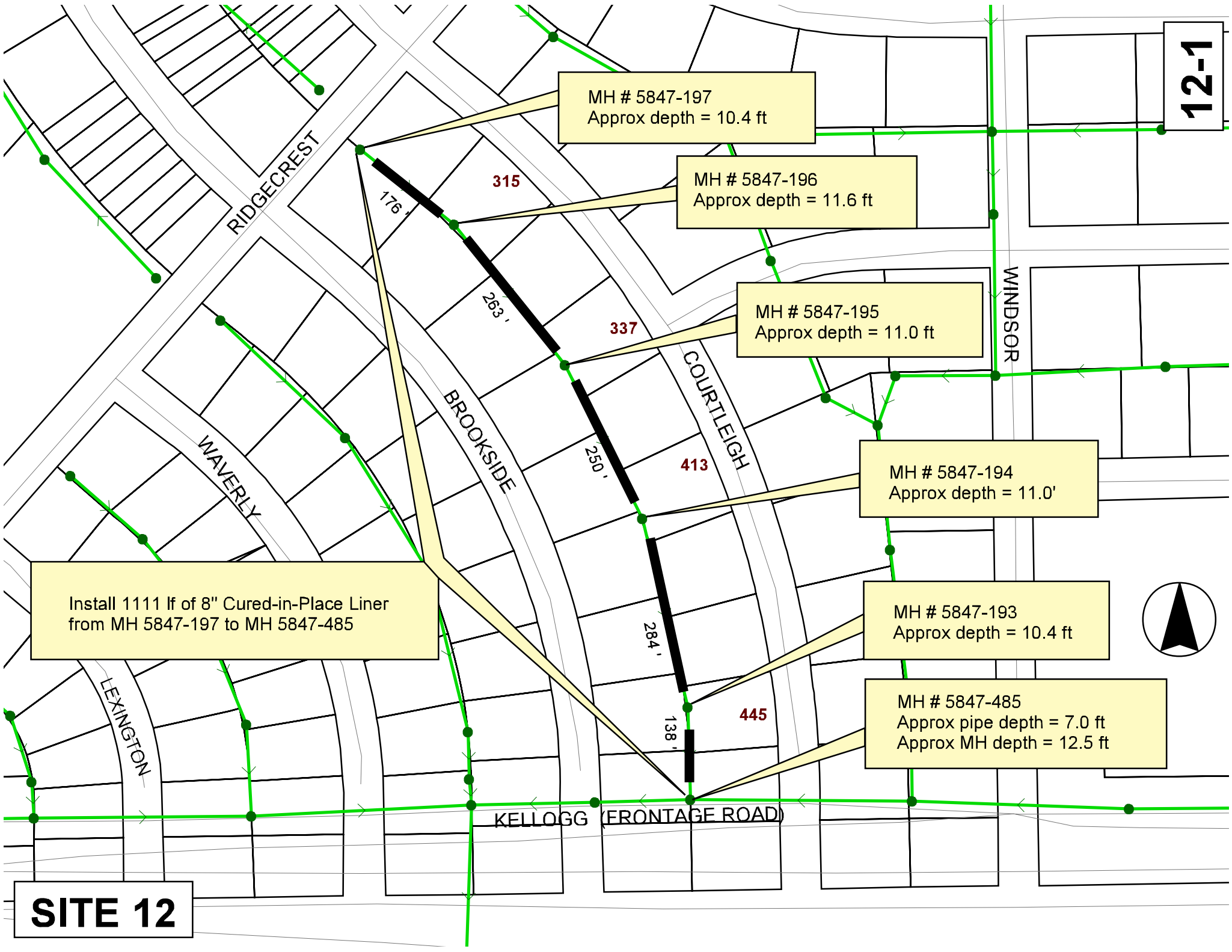


12-1



MH # 5847-197
Approx depth = 10.4 ft

MH # 5847-196
Approx depth = 11.6 ft

MH # 5847-195
Approx depth = 11.0 ft

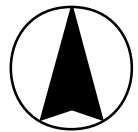
MH # 5847-194
Approx depth = 11.0'

MH # 5847-193
Approx depth = 10.4 ft

MH # 5847-485
Approx pipe depth = 7.0 ft
Approx MH depth = 12.5 ft

Install 1111 lf of 8" Cured-in-Place Liner
from MH 5847-197 to MH 5847-485

SITE 12



RIDGECREST

WAVERLY

LEXINGTON

BROOKSIDE

COURTLEIGH

KELLOGG (FRONTAGE ROAD)

WINDSOR

176'

315

263'

337

250'

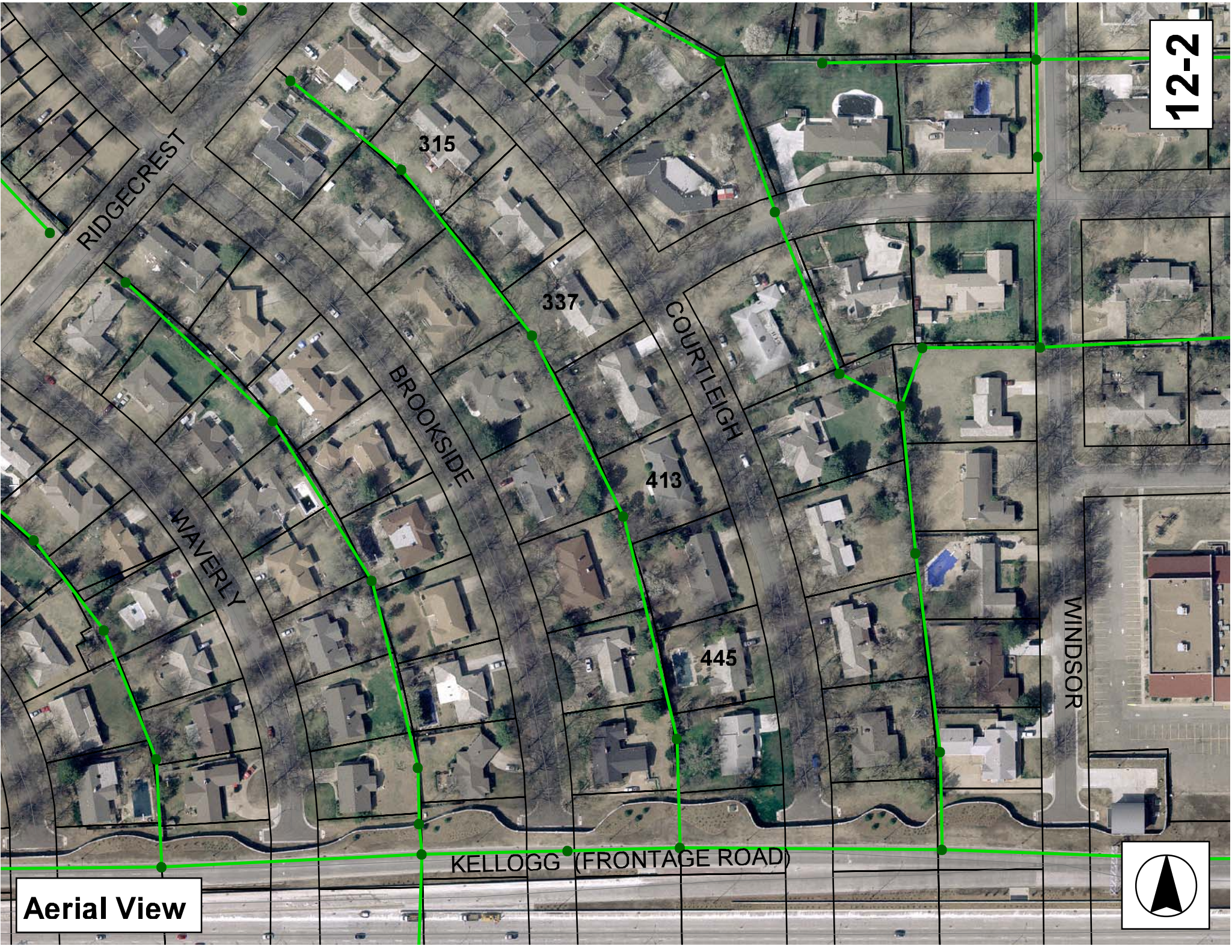
413

284'

445

138'

12-2



Aerial View



Television Inspection Master Report

5/24/2007
1:42 PM

US Structure: 5847-197 304 BROOKSIDE ST Date Insp: 5/4/2007 Basin: E04F
 DS Structure: 5847-196 315 COURTLEIGH ST Dir Televised: Upstream To Downstream

Pipe Information

Shape: Round Length Status: Project No.: F-260
 Dia/Ht Width: 8 0 Material: VCP Index:
 Length: 176.5 Slope: 0.551 Surface:

Inspection Information

Crew: 692 Percent Full: Tape ID: DVD #0277
 Weather: Cloudy Purpose: TV Existing Line Counter Start:
 Surface Cond: Trees & Fences Flow: Normal Flow Counter Stop:

Obs. #	VTR Counter Comment	Distance	Location	Description	Rating	Obsrvd (gpm)	Est. (gpm)	Ratings		
								Struct	Clean	Remain (gpm)
1		0.0	US Manhole	5847-197	1	0.000	0	0	0.000	
	CO-0,H2S-0,02-19.9,LEL-2									
2		6.8	Joint	Offset / Roots	3	0.010	20	0	0.010	
3		13.0	Joint	Offset	3	0.010	20	0	0.010	
4		15.9	Joint	Roots / Offset	1	0.002	1	1	0.002	
5		37.2	Joint	Offset	1	0.000	0	0	0.000	
6		66.4	East	Break-In Conn	1	0.001	0	0	0.001	
	303 S. Courtleigh									
7		69.6	Upper Left	Grease	1	0.000	0	0	0.000	
8		71.1	West	Wye Service	1	0.000	0	0	0.000	
	304 S. Brookside									
9		74.0	East	Sealed Off Wye East	1	0.000	0	0	0.000	
10		82.3	Joint	Offset	2	0.000	0	0	0.000	
11		88.6	Joint	Offset	2	0.000	0	0	0.000	
12		97.7	Joint	Roots	1	0.002	1	1	0.002	
13		100.8	Joint	Roots	1	0.002	1	1	0.002	
14		103.7	Joint	Roots	1	0.002	1	1	0.002	
15		106.6	Joint	Roots	2	0.004	2	4	0.004	
16		109.6	Joint	Roots	1	0.002	1	1	0.002	
17		113.0	Joint	Roots	1	0.002	1	1	0.002	
18		115.8	Joint	Roots & Offset	1	0.002	1	1	0.002	
19		118.7	Joint	Roots	1	0.002	1	1	0.002	
20		121.8	Joint	Roots	2	0.004	2	4	0.004	
21		125.0	Joint	Roots & Offset	1	0.002	1	1	0.002	
22		128.1	Joint	Roots	2	0.004	2	4	0.004	
23		131.0	Joint	Roots	1	0.002	1	1	0.002	
24		134.2	Joint	Roots	2	0.004	2	4	0.004	
25		137.1	Joint	Roots	1	0.002	1	1	0.002	
26		140.3	Joint	Roots	1	0.002	1	1	0.002	
27		143.3	Joint	Roots	1	0.002	1	1	0.002	
28		146.2	Joint	Roots	1	0.002	1	1	0.002	
29		149.5	Joint	Roots	1	0.002	1	1	0.002	
30		152.6	Joint	Roots	1	0.002	1	1	0.002	
31		158.6	Joint	Roots	1	0.002	1	1	0.002	
32		164.3	Joint	Roots	1	0.002	1	1	0.002	
33		167.5	Joint	Roots	1	0.002	1	1	0.002	
34		174.2	DS Manhole	5847-196	1	0.000	0	0	0.000	

12-3

Television Inspection Master Report

5/24/2007
1:42 PM

US Structure: 5847-196
DS Structure: 5847-195

315 COURTLEIGH ST
337 BROOKSIDE DR

Date Insp: 5/4/2007

Basin: E04F

Dir Televised: Upstream To Downstream

Pipe Information

Shape: Round Length Status: Project No.: F-260
Dia/Ht Width: 8 0 Material: VCP Index:
Length: 263.9 Slope: 0.549 Surface:

Inspection Information

Crew: 692 Percent Full: Tape ID: DVD #0277
Weather: Cloudy Purpose: TV Existing Line Counter Start:
Surface Cond: Trees & Fences Flow: Normal Flow Counter Stop:

Obs. #	VTR Counter	Distance	Location	Description	Rating	Obsrvd (gpm)	Est. (gpm)	Ratings			
								Struct	Clean	Remain (gpm)	
1		0.0	US Manhole 5847-196		1		0.000	0	0	0.000	
2		6.0	Joint	Roots	1		0.002	1	1	0.002	
3		8.9	Joint	Roots	1		0.002	1	1	0.002	
4		11.9	Joint	Roots	1		0.002	1	1	0.002	
5		14.5	Joint	Roots	1		0.002	1	1	0.002	
6		17.8	Joint	Roots	1		0.002	1	1	0.002	
7		21.1		Roots	1		0.002	1	1	0.002	
			OFFSET 2								
8		23.8	Joint	Roots	1		0.002	1	1	0.002	
9		26.5	Joint	Roots	2		0.004	2	4	0.004	
10		30.1	Joint	Roots	1		0.002	1	1	0.002	
11		32.9	Joint	Roots	1		0.002	1	1	0.002	
12		35.8	Joint	Roots	2		0.004	2	4	0.004	
13		39.0	Joint	Roots	1		0.002	1	1	0.002	
14		41.7	Joint	Roots	1		0.002	1	1	0.002	
15		44.7	Joint	Roots	2		0.004	2	4	0.004	
16		47.9	Joint	Roots	2		0.004	2	4	0.004	
17		50.8	Joint	Roots	1		0.002	1	1	0.002	
18		54.0	Joint	Roots	2		0.004	2	4	0.004	
19		54.8	East	Wye Service	1		0.000	0	0	0.000	
			ROOTS 4 / 315 S. Courtleigh / Packed with roots								
20		57.2	Joint	Roots	4		0.010	10	25	0.010	
21		57.8	West	Break-In Conn	3		0.004	2	0	0.004	
			ROOTS 3 / 312 Brookside								
22		60.0	Joint	Roots	2		0.004	2	4	0.004	
23		63.2	Joint	Roots	1		0.002	1	1	0.002	
24		66.4	Joint	Roots	2		0.004	2	4	0.004	
25		69.5	Joint	Roots	1		0.002	1	1	0.002	
26		72.6	Joint	Roots	2		0.004	2	4	0.004	
27		75.0	Joint	Roots	2		0.004	2	4	0.004	
28		78.6	Joint	Roots	1		0.002	1	1	0.002	
29		81.3	Joint	Roots	1		0.002	1	1	0.002	
30		84.1	Joint	Roots	1		0.002	1	1	0.002	
31		87.6	Joint	Roots	1		0.002	1	1	0.002	
32		90.2	Joint	Roots	1		0.002	1	1	0.002	
33		96.4	Joint	Roots	3		0.008	5	8	0.008	
34		99.8	Joint	Roots	2		0.004	2	4	0.004	
35		102.3	Joint	Roots	1		0.002	1	1	0.002	
36		105.3	Joint	Roots	2		0.004	2	4	0.004	

12-4

Television Inspection Master Report

5/24/2007
1:42 PM

US Structure: 5847-196 315 COURTLEIGH ST Date Insp: 5/4/2007 Basin: E04F
DS Structure: 5847-195 337 BROOKSIDE DR Dir Televised: Upstream To Downstream

37	108.4	Joint	Roots	1	0.002	1	1	0.002
38	111.2	Joint	Roots	1	0.002	1	1	0.002
39	114.1	Joint	Roots	1	0.002	1	1	0.002
40	123.4	Joint	Roots	1	0.002	1	1	0.002
41	127.0	Joint	Roots	1	0.002	1	1	0.002
42	129.7	Joint	Roots	2	0.004	2	4	0.004
43	133.0	Joint	Roots	1	0.002	1	1	0.002
44	136.1	Joint	Roots	1	0.002	1	1	0.002
45	138.4	Joint	Roots	1	0.002	1	1	0.002
46	145.2	Joint	Roots	1	0.002	1	1	0.002
47	147.9	Joint	Roots	1	0.002	1	1	0.002
48	150.7	Joint	Roots	1	0.002	1	1	0.002
49	153.9	Joint	Roots	1	0.002	1	1	0.002
50	157.1	Joint	Roots	1	0.002	1	1	0.002
51	160.4	Joint	Roots	1	0.002	1	1	0.002
52	163.1	Joint	Roots	2	0.004	2	4	0.004
53	169.1	Joint	Roots	2	0.004	2	4	0.004
54	175.4	Joint	Roots	1	0.002	1	1	0.002
55	178.6	Joint	Roots	1	0.002	1	1	0.002
56	178.8	East	Wye Service	1	0.000	0	0	0.000
ROOTS 4 / 325 S. Courtleigh / Packed with roots								
57	184.3	Joint	Roots	2	0.004	2	4	0.004
58	187.6	Joint	Roots	1	0.002	1	1	0.002
59	190.8	Joint	Roots	1	0.002	1	1	0.002
60	193.8	Joint	Roots	1	0.002	1	1	0.002
61	199.6	Joint	Roots	1	0.002	1	1	0.002
62	199.6	Crown	Crack-Horizontal	4	0.008	10	0	0.008
63	202.4	Lower Left	Crack-Horizontal	4	0.008	10	0	0.008
64	206.2	West	Break-In Conn	3	0.004	2	0	0.004
ROOTS & CRACKS. / 326 Brookside								
65	211.6	Joint	Roots	1	0.002	1	1	0.002
66	214.7	Upper Right	Crack-Horizontal	4	0.008	10	0	0.008
ROOTS 2								
67	218.2	Crown	Crack-Horizontal	3	0.004	5	0	0.004
ROOTS 1								
68	221.2	Upper Left	Crack-Horizontal	2	0.002	2	0	0.002
ROOTS 1								
69	223.9	Joint	Roots	2	0.004	2	4	0.004
70	228.7		Sealed Off Wye West	1	0.000	0	0	0.000
71	230.2	Joint	Roots	1	0.002	1	1	0.002
72	233.4	Joint	Roots	1	0.002	1	1	0.002
73	236.5	Joint	Roots	1	0.002	1	1	0.002
74	239.1	Joint	Roots	1	0.002	1	1	0.002
75	242.6	Joint	Roots	1	0.002	1	1	0.002
76	244.4	Upper Right	Grease	1	0.000	0	0	0.000
77	246.0	Start	Sag	2	0.000	2	0	0.000
78	249.5	Joint	Roots	1	0.002	1	1	0.002
79	252.2	Joint	Roots	1	0.002	1	1	0.002
80	254.9	End	Sag	1	0.000	1	0	0.000
81	254.9	Offset Joint	Crack-Radial	4	0.008	10	0	0.008
ROOTS 3. / fairly bad offset but line through it without repairs								
82	258.6	DS Manhole	5847-195	1	0.000	0	0	0.000

12-5

Television Inspection Master Report

5/24/2007
1:42 PM

US Structure: 5847-195
DS Structure: 5847-194

337 BROOKSIDE DR
413 S COURTLEIGH ST

Date Insp: 5/7/2007
Dir Televised: Upstream To Downstream

Basin: E04F

Pipe Information

Shape: Round Length Status: Project No.: F-260
Dia/Ht Width: 8 0 Material: VCP Index:
Length: 250.6 Slope: 0.550 Surface:

Inspection Information

Crew: 692 Percent Full: Tape ID: DVD #0280
Weather: Cloudy Purpose: TV Existing Line Counter Start:
Surface Cond: Trees & Fences Flow: Normal Flow Counter Stop:

Obs. VTR

#	Counter	Distance	Location	Description	Rating	Obsrvd (gpm)	Est. (gpm)	Ratings		
								Struct	Clean	Remain (gpm)
1		0.0	US Manhole	5847-195	1		0.000	0	0	0.000
			CO-0,H2S-0,02-20.5,LEL-0							
2		3.0	Joint	Roots	1		0.002	1	1	0.002
3		18.6	Joint	Roots	1		0.002	1	1	0.002
4		21.1	Joint	Roots	2		0.004	2	4	0.004
5		23.4	Joint	Roots	1		0.002	1	1	0.002
6		26.8	Joint	Roots	2		0.004	2	4	0.004
7		31.0	Joint	Roots	1		0.002	1	1	0.002
8		34.2	Joint	Roots	3		0.008	5	8	0.008
9		36.5	East	Wye Service	4		0.000	60	0	0.000
			337 S COURTRLEIGHT packed with roots							
10		37.1	Joint	Roots	2		0.004	2	4	0.004
11		40.3	Joint	Roots	1		0.002	1	1	0.002
12		42.7	Joint	Roots	1		0.002	1	1	0.002
13		51.3	Joint	Roots	2		0.004	2	4	0.004
14		54.5	Joint	Roots	1		0.002	1	1	0.002
15		58.5	Joint	Roots	1		0.002	1	1	0.002
16		64.6	Joint	Roots	1		0.002	1	1	0.002
17		69.9	Joint	Roots	1		0.002	1	1	0.002
18		87.9	Joint	Roots	1		0.002	1	1	0.002
19		91.3	Joint	Roots	1		0.002	1	1	0.002
20		94.6	Joint	Roots	1		0.002	1	1	0.002
21		98.1	West	Wye Service	4		0.000	60	0	0.000
			338 S BROOKSIDE ROOTS 4							
22		99.6	Joint	Roots	1		0.002	1	1	0.002
			GREASE 1							
23		102.7	Upper Right	Grease	1		0.000	0	0	0.000
24		106.1	Joint	Roots	1		0.002	1	1	0.002
25		112.1	Crown	Grease	1		0.000	0	0	0.000
26		115.8	Crown	Grease	1		0.000	0	0	0.000
27		121.3	Upper Left	Crack-Horizontal	2		0.002	2	0	0.002
28		132.5	Joint	Roots	1		0.002	1	1	0.002
29		135.9	Joint	Roots	1		0.002	1	1	0.002
30		139.2	Joint	Offset	2		0.000	0	0	0.000
31		141.9	Joint	Roots	1		0.002	1	1	0.002
32		154.3	Joint	Roots	1		0.002	1	1	0.002
33		158.0	Upper Left	Grease	1		0.000	0	0	0.000
34		160.8	Joint	Roots	1		0.002	1	1	0.002
35		160.9	Crown	Broken Pipe	4		0.030	78	0	0.030

12-6

Television Inspection Master Report

5/24/2007
1:42 PM

US Structure: 5847-195
DS Structure: 5847-194

337 BROOKSIDE DR
413 S COURTLEIGH ST

Date Insp: 5/7/2007

Basin: E04F

Dir Televised: Upstream To Downstream

36	161.0	East	Wye Service	2	0.000	0	0	0.000
403 S COURTLEIGHT								
37	163.2	Upper Right	Grease	1	0.000	0	0	0.000
38	164.4	Lower Right	Crack-Horizontal	3	0.004	5	0	0.004
39	166.8	Upper Left	Grease	1	0.000	0	0	0.000
40	169.5	Upper Right	Crack-Radial	1	0.001	1	0	0.001
41	189.1	Joint	Roots	1	0.002	1	1	0.002
42	194.7	Joint	Roots	1	0.002	1	1	0.002
43	198.1	Joint	Roots	1	0.002	1	1	0.002
44	200.7	Joint	Roots	1	0.002	1	1	0.002
45	202.9	Joint	Roots	1	0.002	1	1	0.002
46	206.6	Joint	Roots	1	0.002	1	1	0.002
47	210.2	Joint	Roots	1	0.002	1	1	0.002
48	212.3	Joint	Roots	1	0.002	1	1	0.002
49	215.2	Joint	Roots	1	0.002	1	1	0.002
50	217.8	Joint	Roots	1	0.002	1	1	0.002
51	221.2	Joint	Roots	1	0.002	1	1	0.002
52	223.8	Joint	Roots	1	0.002	1	1	0.002
53	227.5	West	Wye Service	1	0.000	0	0	0.000
348 S BROOKSIDE								
54	228.7	Crown	Grease	1	0.000	0	0	0.000
55	229.9	Joint	Roots	1	0.002	1	1	0.002
56	232.4	Joint	Roots	1	0.002	1	1	0.002
57	238.1	Joint	Roots	1	0.002	1	1	0.002
58	241.7	Joint	Roots	1	0.002	1	1	0.002
59	243.8	DS Manhole		2	0.000	0	0	0.000
SMALL INSIDE DROP AT MANHOLE								

12-7

Television Inspection Master Report

5/24/2007
1:42 PM

US Structure: 5847-194
DS Structure: 5847-193

413 S COURTLEIGH ST
445 S COURTLEIGH DR

Date Insp: 5/7/2007
Dir Televised: Upstream To Downstream

Basin: E04F

Pipe Information

Shape: Round Length Status: Project No.: F-260
Dia/Ht Width: 8 0 Material: VCP Index:
Length: 284.2 Slope: 0.549 Surface:

Inspection Information

Crew: 692 Percent Full: Tape ID: DVD #0280
Weather: Cloudy Purpose: TV Existing Line Counter Start:
Surface Cond: Trees & Fences Flow: Normal Flow Counter Stop:

Obs. #	VTR Counter	Distance	Location	Description	Rating	Obsrvd (gpm)	Est. (gpm)	Ratings Struct	Clean	Remain (gpm)
1		0.0	US Manhole		1		0.000	0	0	0.000
2		9.0	Joint	Roots	2		0.004	2	4	0.004
3		10.2	Upper Right	Broken Pipe	4		0.030	78	0	0.030
4		10.2	East	Break-In Conn	2		0.002	0	0	0.002
413 S COURTLEIGH ROOTS 1 / PVC										
5		18.5	Joint	Roots	1		0.002	1	1	0.002
6		26.9	Joint	Roots	2		0.004	2	4	0.004
7		30.8	Joint	Roots	1		0.002	1	1	0.002
8		33.8	Joint	Roots	1		0.002	1	1	0.002
9		36.2	Joint	Roots	1		0.002	1	1	0.002
10		39.0	Joint	Roots	1		0.002	1	1	0.002
11		41.8	Joint	Roots	2		0.004	2	4	0.004
12		43.1	West	Break-In Conn	2		0.002	0	0	0.002
404 S BROOKSIDE ROOTS 2										
13		44.4	Crown	Crack-Horizontal	1		0.001	1	0	0.001
14		46.1	Joint	Roots	1		0.002	1	1	0.002
15		48.4	Joint	Roots	1		0.002	1	1	0.002
16		51.9	Joint	Roots	1		0.002	1	1	0.002
17		65.7	East	Break-In Conn	1		0.001	0	0	0.001
425 S COURTLEIGH ROOTS 1.										
18		66.5	Crown	Crack-Horizontal	3		0.004	5	0	0.004
19		75.7	Joint	Roots	1		0.002	1	1	0.002
20		81.8	Joint	Roots	1		0.002	1	1	0.002
21		84.4	Joint	Roots	1		0.002	1	1	0.002
22		101.0	Start	Sag	2		0.000	2	0	0.000
23		105.3	West	Break-In Conn	4		0.008	60	0	0.008
416 S BROOKSIDE ROOTS 3 / MAY NEED TO REPLACE THIS TAP IN THE FUTURE / POSSIBLY BREAKING FROM MAIN										
24		106.6	Joint	Roots	1		0.002	1	1	0.002
25		106.6	Invert	Crack-Horizontal	2		0.002	2	0	0.002
26		108.8	End	Sag	1		0.000	1	0	0.000
27		110.7		Sealed Off Wye West	1		0.000	0	0	0.000
28		135.2	Upper Right	Crack-Radial	3		0.004	5	0	0.004
29		139.0	Lower Right	Crack-Radial	2		0.002	2	0	0.002
30		140.0		Sealed Off Wye East	1		0.000	0	0	0.000
31		158.9	Crown	Broken Pipe	4		0.030	78	0	0.030
32		160.4	Crown	Crack-Horizontal	4		0.008	10	0	0.008
33		163.2	Crown	Crack-Horizontal	4		0.008	10	0	0.008

Television Inspection Master Report

5/24/2007
1:42 PM

US Structure: 5847-194 413 S COURTLEIGH ST **Date Insp:** 5/7/2007 **Basin:** E04F
DS Structure: 5847-193 445 S COURTLEIGH DR **Dir Televised:** Upstream To Downstream

34	166.0	Crown	Crack-Horizontal	4	0.008	10	0	0.008	
35	169.1	Upper Left	Crack-Horizontal	3	0.004	5	0	0.004	
36	180.9	West	Break-In Conn	1	0.001	0	0	0.001	
426 S BROOKSIDE / PVC									
37	225.1		Sealed Off Wye West	1	0.000	0	0	0.000	
38	242.0	East	Wye Service	2	0.000	0	0	0.000	
435 S COURTLEIGH CRACKS ROOTS									
39	242.9	Upper Left	Crack-Horizontal	2	0.002	2	0	0.002	
40	259.7	Joint	Roots	1	0.002	1	1	0.002	
41	272.0	Joint	Roots	1	0.002	1	1	0.002	
42	274.3	Joint	Roots	2	0.004	2	4	0.004	
43	278.0	Joint	Roots	1	0.002	1	1	0.002	
44	281.4	DS Manhole	5847-193	1	0.000	0	0	0.000	

12-9

Television Inspection Master Report

5/24/2007
1:42 PM

US Structure: 5847-193
DS Structure: 5847-485

445 S COURTLEIGH DR

Date Insp: 5/7/2007

Basin: E04F

Dir Televised: Upstream To Downstream

Pipe Information

Shape: Round Length Status: VCP Project No.: F-260
Dia/Ht Width: 8 Material: Index:
Length: 137.8 Slope: 0.400 Surface:

Inspection Information

Crew: 692 Percent Full: Tape ID: DVD #0280
Weather: Cloudy Purpose: TV Existing Line Counter Start:
Surface Cond: Trees & Fences Flow: Normal Flow Counter Stop:

Obs. #	VTR Counter	Distance	Location	Description	Rating	Obsrvd (gpm)	Est. (gpm)	Ratings		
								Struct	Clean	Remain (gpm)
1		0.0	US Manhole	5847-193	1	0.000	0	0	0.000	
2		2.2	Joint	Roots	1	0.002	1	1	0.002	
3		8.5	Joint	Roots	1	0.002	1	1	0.002	
4		8.8	West	Break-In Conn	3	0.004	2	0	0.004	
436 S BROOKSIDE ROOTS CRACKS										
5		11.9	Crown	Crack-Horizontal	4	0.008	10	0	0.008	
ROOTS 1										
6		42.1	Joint	Roots	1	0.002	1	1	0.002	
7		43.9	Start	Sag	1	0.000	1	0	0.000	
8		44.2	Joint	Roots	1	0.002	1	1	0.002	
9		51.2	Upper Left	Crack-Horizontal	2	0.002	2	0	0.002	
10		53.8	Upper Right	Crack-Horizontal	4	0.008	10	0	0.008	
11		55.2	West	Sealed Off Wye West	1	0.000	0	0	0.000	
12		56.6	East	Wye Service	2	0.000	0	0	0.000	
445 S COURTLEIGH ROOTS										
13		59.6	Crown	Crack-Horizontal	4	0.008	10	0	0.008	
14		75.4	Upper Left	Crack-Horizontal	2	0.002	2	0	0.002	
15		80.5	Crown	Crack-Horizontal	4	0.008	10	0	0.008	
16		99.5	Crown	Crack-Horizontal	4	0.008	10	0	0.008	
17		123.6	Offset Joint	PVC begins	2	0.000	0	0	0.000	
		135.0	Invert	Outside Drop Hole						
18		138.0	Crown	PVC ends at manhole	1	0.000	0	0	0.000	
19		138.0	DS Manhole	5847-485	1	0.000	0	0	0.000	

12-10