

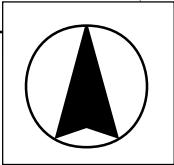
Install 412 lf of 8" Cured-in-Place Liner from MH 5846-501 to MH 5846-319

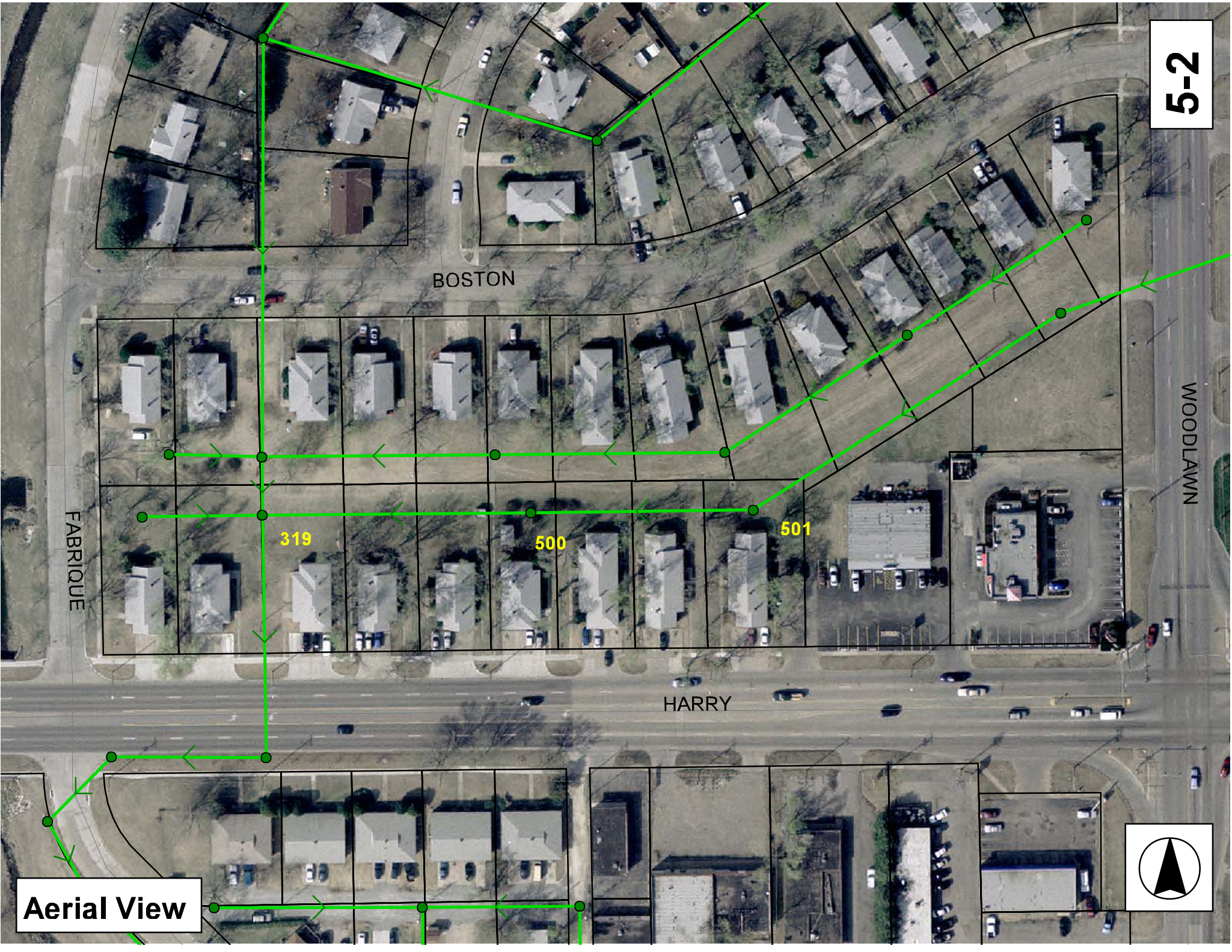
MH # 5846-319  
Approx depth = 11.5 ft

MH # 5846-500  
Approx depth = 9.8 ft

MH # 5846-501  
Approx depth = 10.7 ft

**SITE 5**





BOSTON

FABRIQUE

319

500

501

HARRY

WOODLAWN

Aerial View



# Television Inspection Master Report

5/2/2007  
3:34 PM

US Structure: 5846-501  
DS Structure: 5846-500

6174 E HARRY DR  
6150 E HARRY DR

Date Insp: 10/10/2006  
Dir Televised: Upstream To Downstream

Basin: E01C

## Pipe Information

G-052

Shape: Round  
Dia/Ht Width: 8  
Length: 187.2  
Pipe Sec Length:

Length Status: VCP  
Material:  
Slope: 0.198

Project No.:  
Index:  
Surface:

Comment: POINT REPAIR BY SEWER MAINTENANCE FROM 122' W OF MH 5846-501 TO 131'8" W OF MH 5846-501. WORK COMPLETED 04-26-2007 TGC #####

## Inspection Information

DVD #0197

Crew: 690  
Weather: Rainy  
Surface Cond: N/A

Percent Full:  
Purpose: TV Existing Line  
Flow: Normal Flow

Tape ID:  
Counter Start:  
Counter Stop:

Obs. #	VTR Counter Comment	Distance	Location	Description	Rating	Obsrvd (gpm)	Est. (gpm)	Ratings Struct	Clean	Remain (gpm)
1		0.0	US Manhole	5846-501	1		0.000	0	0	0.000
2		1.4	South	Break-In Conn	2		0.000	0	0	0.000
3		22.2	South	Wye Service / Sealed Off	1		0.000	0	0	0.000
4		82.2	South	Wye Service	1		0.000	0	0	0.000
5		91.9	Upper Left	Crack-Horizontal	3		0.000	0	0	0.000
6		93.5	Joint	Offset	3		0.000	0	0	0.000
7		120.4	Joint	Offset	3		0.000	0	0	0.000
8		120.9	South	Break-In Conn / PVC	1		0.000	0	0	0.000
9		122.4	Upper Left	Broken Pipe	4		0.000	0	0	0.000
10	NEEDS REPAIR	123.4	Joint	Offset	5		0.000	0	0	0.000
NEEDS REPAIR, CAMERA WON'T PASS <b><u>(REPAIRED, SEE COMMENT ABOVE / PIPE IS NOW READY FOR LINER)</u></b>										

## REVERSE SETUP:

Obs. #	VTR Counter Comment	Distance	Location	Description	Rating	Obsrvd (gpm)	Est. (gpm)	Ratings Struct	Clean	Remain (gpm)
1		0.0	DS Manhole	5846-500 / TELEVISIONING AGAINST THE FLOW						
3		3.0	Crown	Broken Pipe	3		0.000	0	0	0.000
4		30.4	Crown	Broken Pipe	3		0.000	0	0	0.000
5		33.6	Crown	Broken Pipe	4		0.000	0	0	0.000
6		39.5	South	Sealed Off Wye Connection						
7		46.0	Crown	Broken Pipe	3		0.000	0	0	0.000
8		52.7	Crown	Crack-Horizontal	3		0.000	0	0	0.000
9		55.0	Upper Left	Crack-Horizontal	3		0.000	0	0	0.000
10		58.0	Joint	Offset	5		0.000	0	0	0.000
11		58.4		Stopped Inspection	5		0.000	0	0	0.000
THIS WILL COMPLETE THE TELEVISIONING OF THIS LINE										

**5-3**

# Television Inspection Master Report

5/2/2007  
3:34 PM

US Structure: 5846-500      6150 E HARRY DR      Date Insp: 12/6/2006      Basin: E01C  
DS Structure: 5846-319      6132 E HARRY ST      Dir Televised: Upstream To Downstream

## Pipe Information

Shape: Round      Length Status:      Project No.: G-052  
Dia/Ht Width: 8      0      Material: VCP      Index:  
Length: 225.0      Slope: 0.200      Surface:

## Inspection Information

Crew: 694      Percent Full:      Tape ID: DVD #0216  
Weather: Sunny      Purpose: TV Existing Line      Counter Start:  
Surface Cond: N/A      Flow: Normal Flow      Counter Stop:

Obs. #	VTR Counter	Distance	Location	Description	Rating	Obsrvd (gpm)	Est. (gpm)	Ratings		
								Struct	Clean	Remain (gpm)
1		0.0	US Manhole	5846-500	1	0.000	0	0	0.000	
WE WILL TELEVISION JUST THE CLEANER EQUIPMENT OPERATION AND THEN MAKE OBSERVATIONS										
17		20.7	Crown	Broken Pipe	3	0.000	0	0	0.000	
18		21.1	South	Break-In Conn	4	0.000	0	0	0.000	
BROKEN PIPE AROUND CONNECTION / wait to see if tap needs replaced after liner installation										
16		50.0	Crown	Grease	5	0.000	0	25	0.000	
15		53.3	Crown	Grease	4	0.000	0	10	0.000	
14		62.2	Crown	Grease	4	0.000	0	10	0.000	
13		71.4	Crown	Grease	5	0.000	0	25	0.000	
HEAVY GREASE										
11		76.6	Upper Left	Broken Pipe	4	0.000	0	0	0.000	
12		76.6	Upper Right	Grease	4	0.000	0	10	0.000	
10		81.4	South	Wye Service	1	0.000	0	0	0.000	
9		82.6	Upper Left	Crack-Horizontal	3	0.000	0	0	0.000	
8		91.8	Upper Right	Grease	4	0.000	0	10	0.000	
7		112.2	Upper Right	Grease	4	0.000	0	10	0.000	
6		145.0	South	Sealed Off Wye Connection		0.000	0	0	0.000	
5		147.9	South	Break-In Conn	1	0.000	0	0	0.000	
4		208.9	South	Wye Service	1	0.000	0	0	0.000	
3		221.5	Lower Right	Broken Pipe	3	0.000	0	0	0.000	
2		225.8	DS Manhole		1	0.000	0	0	0.000	
WE WILL PULL BACK AND MAKE OBSERVATIONS										

5-4