

CONSTRUCTION PLANS FOR STREET AND DRAINAGE IMPROVEMENTS EQUESTRIAN ESTATES - PHASE 1 TO THE CITY OF WICHITA, KANSAS

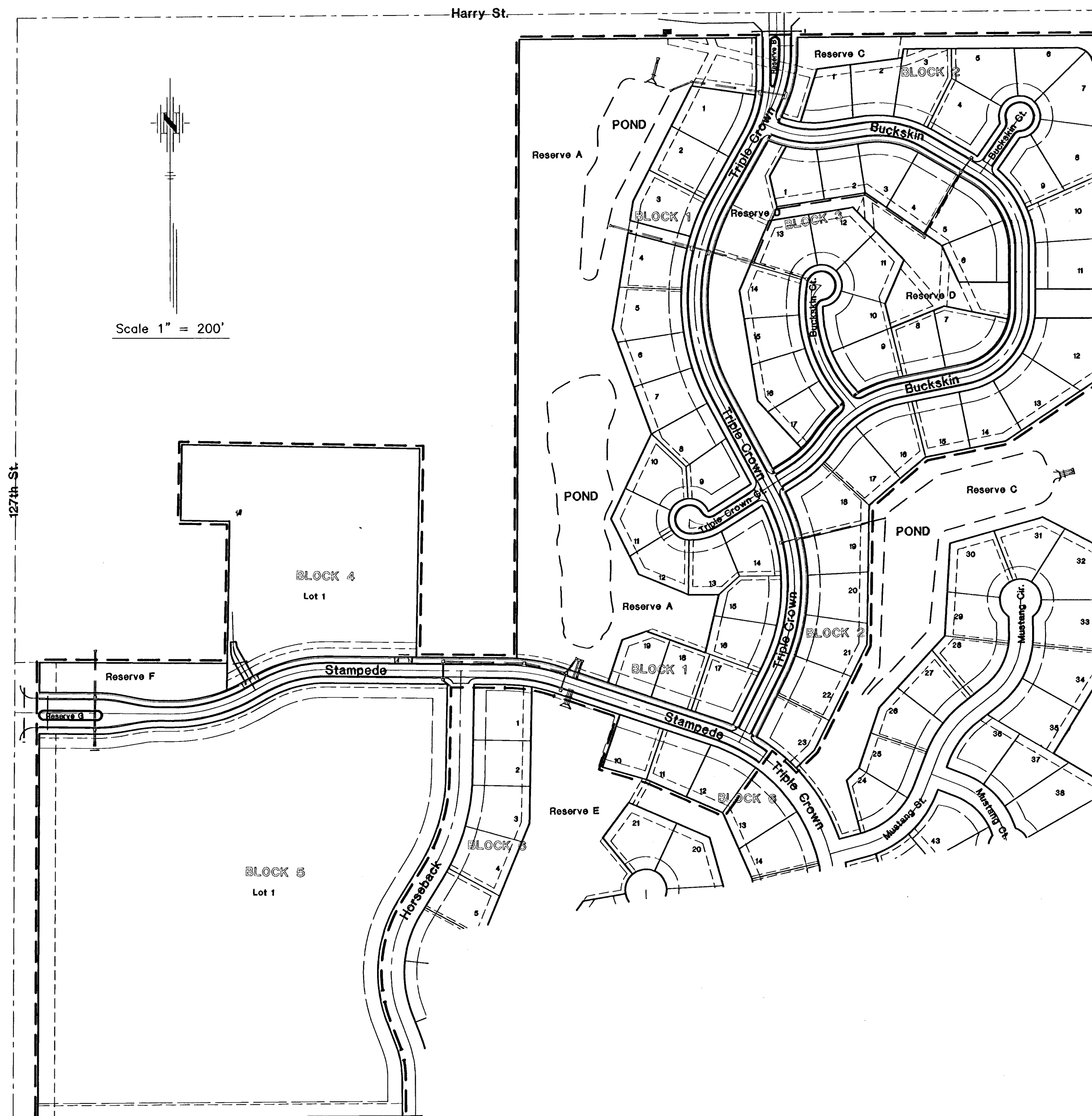
MICHAEL E. LINDEBAK, P.E. - CITY ENGINEER

PROJECT NO. 472-83424

OCA NO. 765705

GENERAL NOTES:

1. Utility service lines, poles, valve boxes, meters and etc. are to be adjusted as necessary by others prior to construction unless the plans specifically call for their adjustment by the Contractor. Existing utilities and their location, as shown on the plans, represent the best information obtainable for design. The Contractor will be required to work around existing utilities within the right-of-way which do not conflict with proposed construction.
2. A saw cut of at least one-half the depth of existing surface courses or one-fourth the depth of the existing total pavement thickness shall be provided at locations where proposed construction abuts an existing surface course or pavement for which partial removal of that surface or pavement is required. Sawed joint to facilitate removal within three (3) feet of existing joints will not be permitted and for such instances the limits of removal shall extend to the existing joint. Such saw cuts will not be paid for directly and this cost shall be considered as subsidiary to the project costs.
3. Rubble from the removal of miscellaneous structures and excess excavation which is to be wasted shall be disposed of on sites to be provided by the Contractor. These sites shall be approved by the Engineer as to suitability, appearance and site location. Locations that, in the opinion of the Engineer, will leave an unsightly appearance will not be approved.
All suitable excavation shall be wasted on low lying lots within the addition before any material is disposed of off site.
All disposal sites must be approved by the Kansas Department of Health and Environment. Material either stockpiled or disposed of in a flood plain would require a Kansas State Board of Agriculture permit. Any material dumped in waters of the United States or wetlands is subject to U.S. Corps. of Engineers permitting regulations. Any material buried or stockpiled beyond approved construction limits would require additional archaeological investigations unless buried in a previously approved borrow location.
4. Trees and shrubs in public right-of-way which are in direct conflict with proposed new construction shall be removed by the Contractor with the Engineer's approval. Trees and shrubs which are not in direct conflict with proposed new construction shall be saved and protected from damage.
5. Limits of earthwork shall match existing ground elevations at the right-of-way line unless otherwise noted on the plans with a new finished grade elevation. When a new finished grade elevation is shown, the earthwork shall extend one foot beyond the right-of-way line and then slope up or down using permissible slopes to match the existing ground surface.
6. The Contractor shall be responsible for preserving property irons. The Contractor will be required to reestablish any property irons which are damaged or destroyed by his construction operations. Such irons shall be reestablished by a licensed land surveyor in accordance with state laws.
7. All transition curb paid for as Roll Type Curb.
8. Trees are to be removed as needed. The cost is subsidiary to street construction costs.
9. All disturbed areas within street right-of-ways shall be seeded with temporary rye grass within 14 days of disturbance at a rate of 250 lbs. per acre.
10. Subdivision benchmarks will be flat survey markers, No. 8134-08 3" top diameter available at Kansas Blue Print Co., Inc. (Cost is incidental to curb construction).



INDEX

TITLE SHEET	SHEET 1
TYPICAL 29' PAVEMENT DETAILS	SHEET 2
TYPICAL 35' PAVEMENT DETAILS	SHEET 3
STAMPEDE	SHEET 4-7
TRIPLE CROWN	SHEET 8-11
BUCKSKIN	SHEET 12-15
TRIPLE CROWN COURT	SHEET 16
BUCKSKIN COURTS	SHEET 17-18
DECEL LANE	SHEET 19
STORM SEWER KEY MAP	SHEET 20
STORM SEWERS	SHEET 21-29
CROSS SECTIONS	SHEET 30-87
EARTHWORK SUMMARY	SHEET 88-89
BERM/RESERVE GRADING	SHEET 90-91
HEADWALL/COLLAR DETAILS	SHEET 92
WINGWALL DETAILS	SHEET 93
SOIL SAVER DETAILS	SHEET 94
TYPE 1-A INLET 5'-0"	SHEET 95
TYPE 1-A INLET 10'-0"	SHEET 96
TYPE 1-A INLET 15'-0"	SHEET 97
PAVEMENT UNDERDRAIN	SHEET 98
DROP INLET/HAY BALE SEDIMENT BARRIER	SHEET 99
SPECIAL INLET	SHEET 100
TYPE "P" MANHOLE	SHEET 101
VALLEY GUTTER/WHEELCHAIR RAMP DETAILS	SHEET 102
STANDARD DRIVE ENTRANCES	SHEET 103
STREET SIGN DETAILS	SHEET 104
SOIL EROSION BMP DETAILS	SHEET 105-107
COORDINATE POINTS LIST	SHEET 108
LOT GRADING PLAN	SHEET 109
STORM WATER POLLUTION PREVENTION PLAN	SHEET 110
EQUESTRIAN ESTATES PLAT	SHEET 111-112

TOTAL PROJECT LENGTH: 6,186 L.F. = 1.17 Mi.

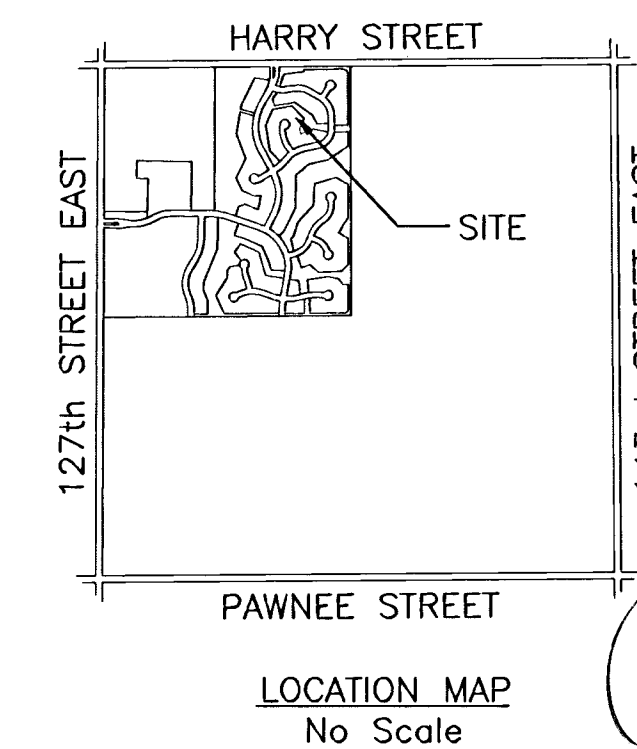
(WITHIN R/W) EARTHWORK SUMMARY

Excavation	12,777 C.Y.
Reserve Excavation	1,821 C.Y.
Compacted Fill	1,586 C.Y.
Loose Fill	57,932 C.Y.
Reserve Loose Fill	8,582 C.Y.
Pond Waste	45,756 C.Y.

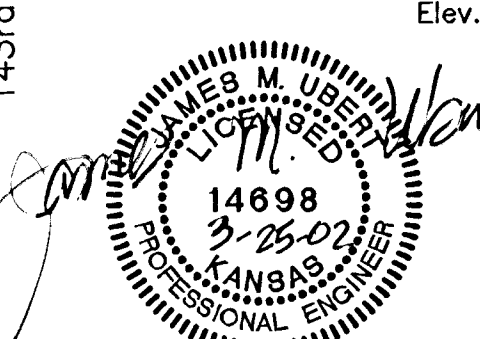
MARCH 2002



POE & ASSOCIATES OF KANSAS, INC.
CONSULTING ENGINEERS
5940 E. Central, Suite 200 • Wichita, KS 67208-4242
Phone 316/685-4114 • FAX 316/685-4444



*DRAINAGE
BOOKED
11-7-02
MEG
C-232*



BENCH MARKS

(U.S.G.S. Datum)

1. Railroad spike in power pole, approximately 25' south and 30' east of W 1/4 Corner, Section 35-27-2E. Elev. 1349.65
2. Square on south hub guard of RCBC just west of NW Corner of Section 35-27-2E. Elev. 1311.90