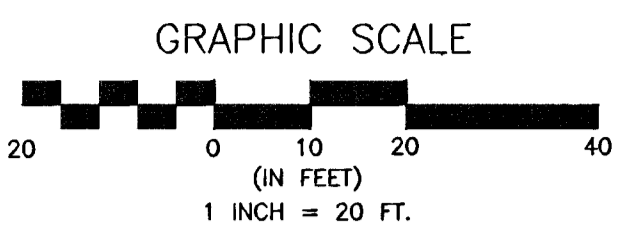
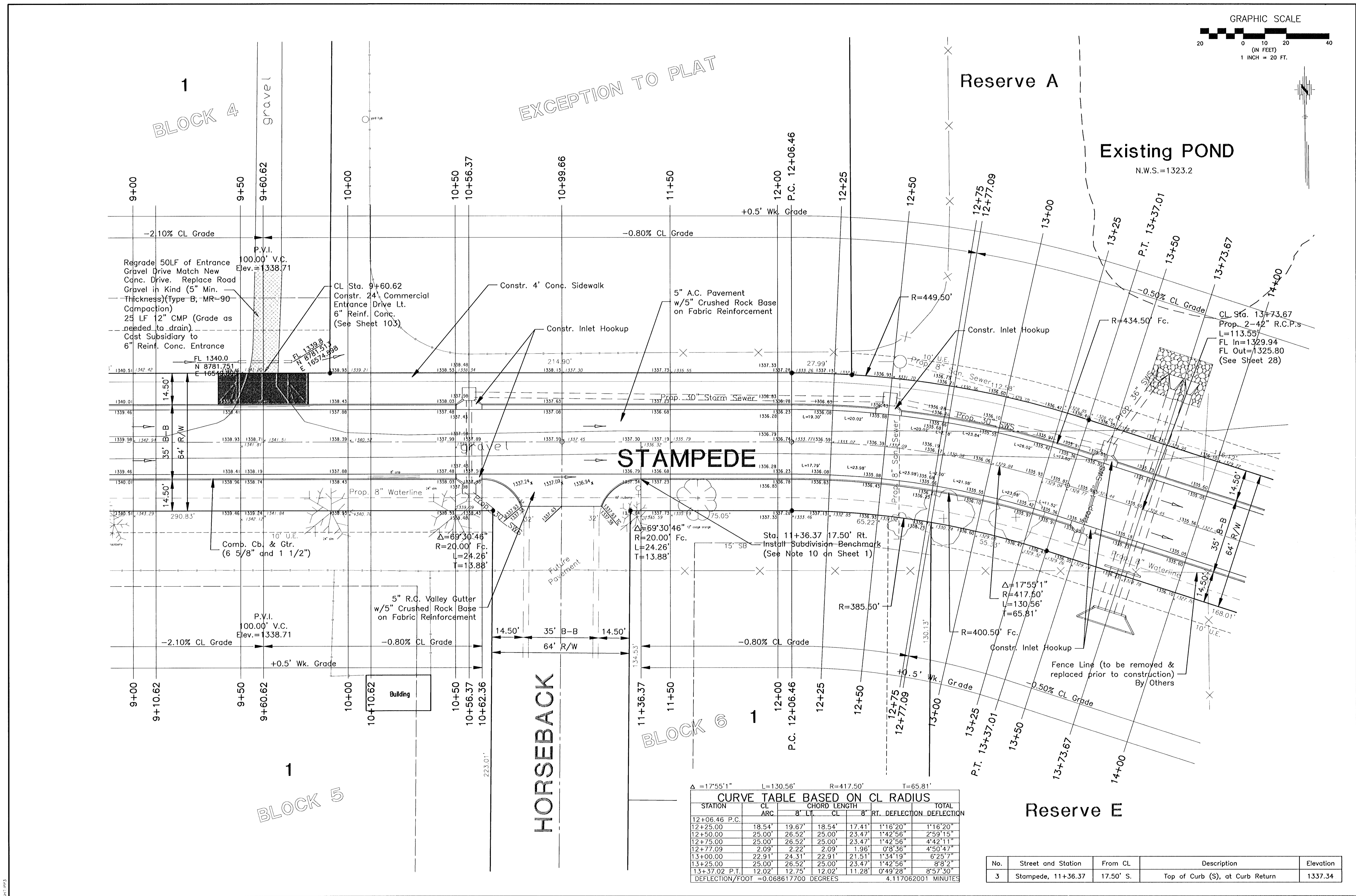


G:\APP\SDCA\WP\BASE-ST.dwg F:\Mar 22 09:41:04 2002 Bernard Kujala - P&E & ASSOCIATES OF KANSAS, INC.

10/1/02



EXCEPTION TO PLAT

BLOCK 4

BLOCK 5

BLOCK 6

Δ = 17°55'1" L = 130.56' R = 417.50' T = 65.81'

STATION	CL		CHORD LENGTH		TOTAL	
	ARC	8' LT	8' RT	CL	8' RT. DEFLECTION	DEFLECTION
12+06.46 P.C.						
12+25.00	18.54'	19.67'	18.54'	17.41'	1°16'20"	1°16'20"
12+50.00	25.00'	26.52'	25.00'	23.47'	1°42'56"	2°59'15"
12+75.00	25.00'	26.52'	25.00'	23.47'	1°42'56"	4°42'11"
12+77.09	2.09'	2.22'	2.09'	1.96'	0°8'36"	4°50'47"
13+00.00	22.91'	24.31'	22.91'	21.51'	6°25'7"	
13+25.00	25.00'	26.52'	25.00'	23.47'	1°42'56"	8°8'2"
13+37.02 P.T.	12.02'	12.75'	12.02'	11.28'	0°49'28"	8°57'30"

DEFLECTION/FOOT = 0.068617700 DEGREES 4.117062001 MINUTES

No.	Street and Station	From CL	Description	Elevation
3	Stampede, 11+36.37	17.50' S.	Top of Curb (S), at Curb Return	1337.34

**FINAL**

Designed By: J. Uberrt / J. Dickman  
 Drawn By: J. Dickman  
 Fee Job No.: 1694A  
 Date: March, 2002

**POE & ASSOCIATES OF KANSAS, INC.**  
 CONSULTING ENGINEERS  
 5940 E. Central, Suite 200 • Wichita, KS 67208-4242  
 Phone 316/685-4114 • FAX 316/685-4444

**EQUESTRIAN ESTATES - PHASE 1**  
 STREET IMPROVEMENTS  
**STAMPEDE**  
 CITY OF WICHITA, KANSAS  
 MICHAEL E. UNDEBAK, P.E. - CITY ENGINEER  
 C.O.W. Project # 472-83424 O.C.A. # 765705

Revision  
 Approved By: \_\_\_\_\_  
 Date: \_\_\_\_\_

Sheet  
 6 of 112