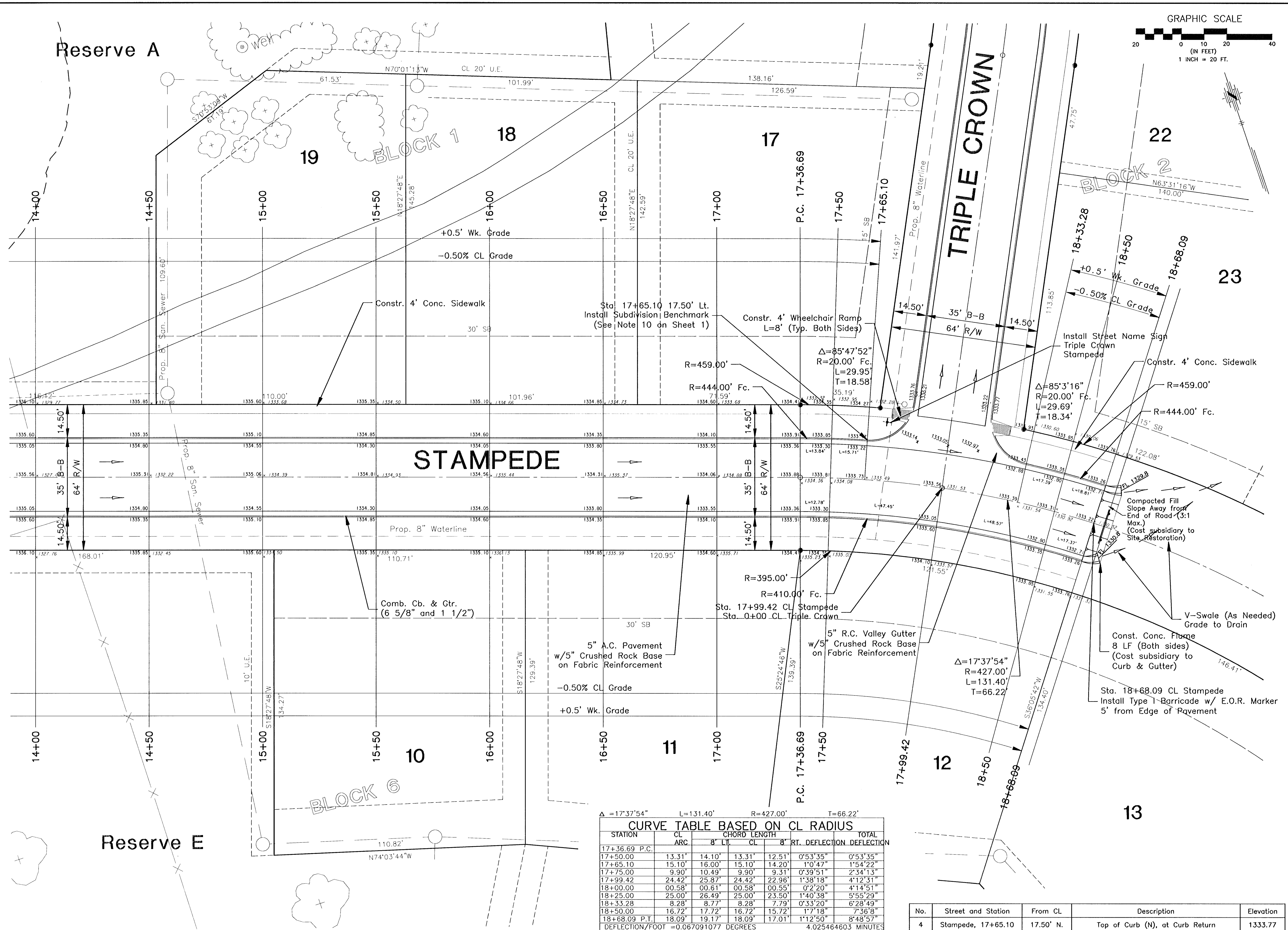


6:\APPS\DC\PROJECTS\BASE-ST.dwg Fri Mar 22 05:41:56 2002 Bernard Kujala - POE & ASSOCIATES OF KANSAS INC.

DATE PLOT



$\Delta = 17^{\circ}37'54''$ $L = 131.40'$ $R = 427.00'$ $T = 66.22'$

CURVE TABLE BASED ON CL RADIUS

STATION	CL ARC	CHORD LENGTH				TOTAL DEFLECTION	
		8' LT.	CL	8' RT.	DEFLECTION	DEFLECTION	
17+36.69 P.C.							
17+50.00	13.31'	14.10'	13.31'	12.51'	0°53'35"	0°53'35"	
17+65.10	15.10'	16.00'	15.10'	14.20'	1°0'47"	1°54'22"	
17+75.00	9.90'	10.49'	9.90'	9.31'	0°39'51"	2°34'13"	
17+99.42	24.42'	25.87'	24.42'	22.96'	1°38'18"	4°12'31"	
18+00.00	00.58'	00.61'	00.58'	00.55'	0°2'20"	4°14'51"	
18+25.00	25.00'	26.49'	25.00'	23.50'	1°40'38"	5°55'29"	
18+33.28	8.28'	8.77'	8.28'	7.79'	0°53'20"	6°28'49"	
18+50.00	16.72'	17.72'	16.72'	15.72'	1°17'18"	7°36'8"	
18+68.09 P.T.	18.09'	19.17'	18.09'	17.01'	1°12'50"	8°48'57"	

DEFLECTION/FOOT = 0.067091077 DEGREES 4.025464603 MINUTES

No.	Street and Station	From CL	Description	Elevation
4	Stampede, 17+65.10	17.50' N.	Top of Curb (N), at Curb Return	1333.77

GRAPHIC SCALE
20 0 10 20 40
(IN FEET)
1 INCH = 20 FT.

NO. DATE BY APPROVED

REVISIONS

EQUESTRIAN ESTATES - PHASE 1
STREET IMPROVEMENTS

POE & ASSOCIATES OF KANSAS, INC.
CONSULTING ENGINEERS
5940 E. Central, Suite 200 • Wichita, KS 67208-4242
Phone 316/685-4114 • FAX 316/685-4444

CITY OF WICHITA, KANSAS
MICHAEL E. LINDBERGH, P.E. CITY ENGINEER
D.C.A. # 765705
C.O.W. Project # 472-83424

FINAL

Designed By: J. Libert / J. Dickman
Drawn By: J. Dickman
Poe Job No.: 1694A
Date: March 2002

Sheet
7 of 112