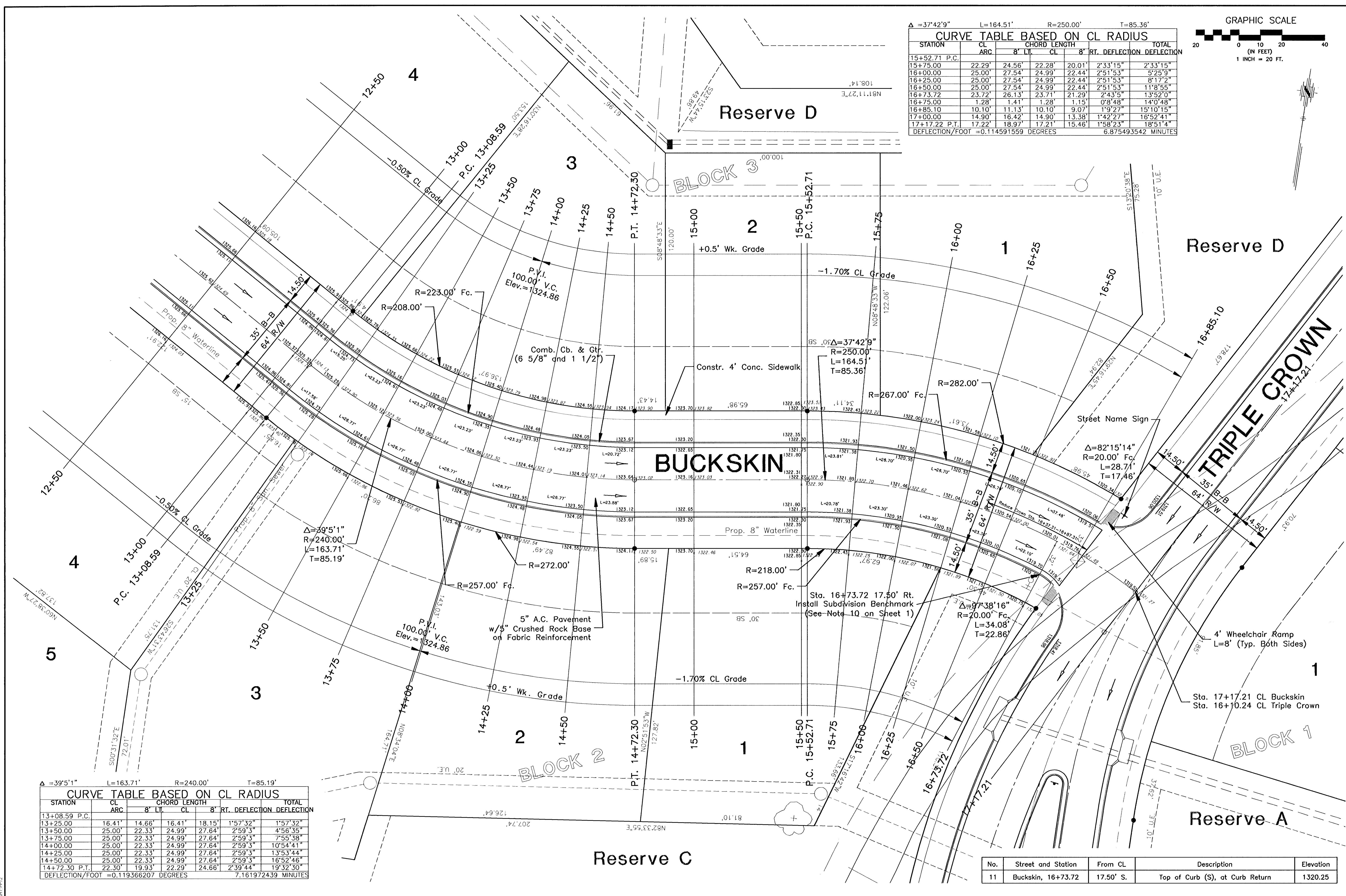


G:\APPS\DUCA\PA\BGA\BASE-ST\110.dwg Fri Mar 15 08:52:34 2002 James Ubert - Poe & Associates of Kansas, Inc.

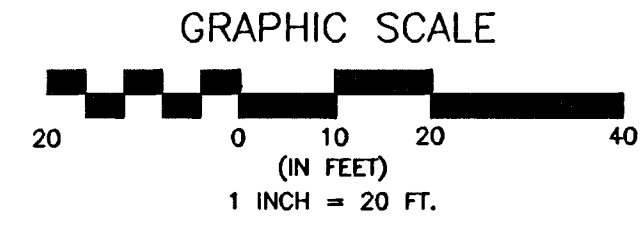
SHP:PR2



$\Delta = 37^{\circ}42'9''$ L=164.51' R=250.00' T=85.36'

STATION	CHORD LENGTH		RT. DEFLECTION		TOTAL DEFLECTION
	CL	8" LT	8" CL	8" RT.	
15+52.71 P.C.					
15+75.00	22.29'	24.56'	22.28'	20.01'	2'33"15"
16+00.00	25.00'	27.54'	24.99'	22.44'	5'25"9"
16+25.00	25.00'	27.54'	24.99'	22.44'	8'17"2"
16+50.00	25.00'	27.54'	24.99'	22.44'	11'8"55"
16+73.72	23.72'	26.13'	23.71'	21.29'	13'52"0"
16+75.00	1.28'	1.41'	1.28'	1.15'	14'0"48"
16+85.10	10.10'	11.13'	10.10'	9.07'	15'10"15"
17+00.00	14.90'	16.42'	14.90'	13.38'	16'52"41"
17+17.22 P.T.	17.22'	18.97'	17.21'	15.46'	18'51"4"

DEFLECTION/FOOT = 0.114591559 DEGREES 6.875493542 MINUTES



$\Delta = 39^{\circ}5'1''$ L=163.71' R=240.00' T=85.19'

STATION	CHORD LENGTH		RT. DEFLECTION		TOTAL DEFLECTION
	CL	8" LT	8" CL	8" RT.	
13+08.59 P.C.					
13+25.00	16.41'	14.66'	16.41'	18.15'	1'57"32"
13+50.00	25.00'	22.33'	24.99'	27.64'	4'56"35"
13+75.00	25.00'	22.33'	24.99'	27.64'	7'55"38"
14+00.00	25.00'	22.33'	24.99'	27.64'	10'54"41"
14+25.00	25.00'	22.33'	24.99'	27.64'	13'53"44"
14+50.00	25.00'	22.33'	24.99'	27.64'	16'52"46"
14+72.30 P.T.	22.30'	19.93'	22.29'	24.66'	19'32"30"

DEFLECTION/FOOT = 0.119366207 DEGREES 7.161972439 MINUTES

No.	Street and Station	From CL	Description	Elevation
11	Buckskin, 16+73.72	17.50' S.	Top of Curb (S), at Curb Return	1320.25

Revision: _____
 Approved: _____
 Date: _____
 No. _____

EQUESTRIAN ESTATES - PHASE 1
 STREET IMPROVEMENTS
 BLOCK 3
 CITY OF WICHITA, KANSAS
 MICHAEL E. LINDEBAK, P.E. - CITY ENGINEER
 C.O.W. Project # 472-8342 O.C.A. # 765705

POE & ASSOCIATES OF KANSAS, INC.
 CONSULTING ENGINEERS
 5940 E. Central, Suite 200 ■ Wichita, KS 67208-0242
 Phone 316.685-4114 ■ FAX 316.685-4444

PE

DESIGNED BY: J. Ubert / J. Dickman
 DRAWN BY: J. Dickman
 POE JOB NO.: 1694A
 DATE: March 2002

FINAL

Sheet
 15 of 112