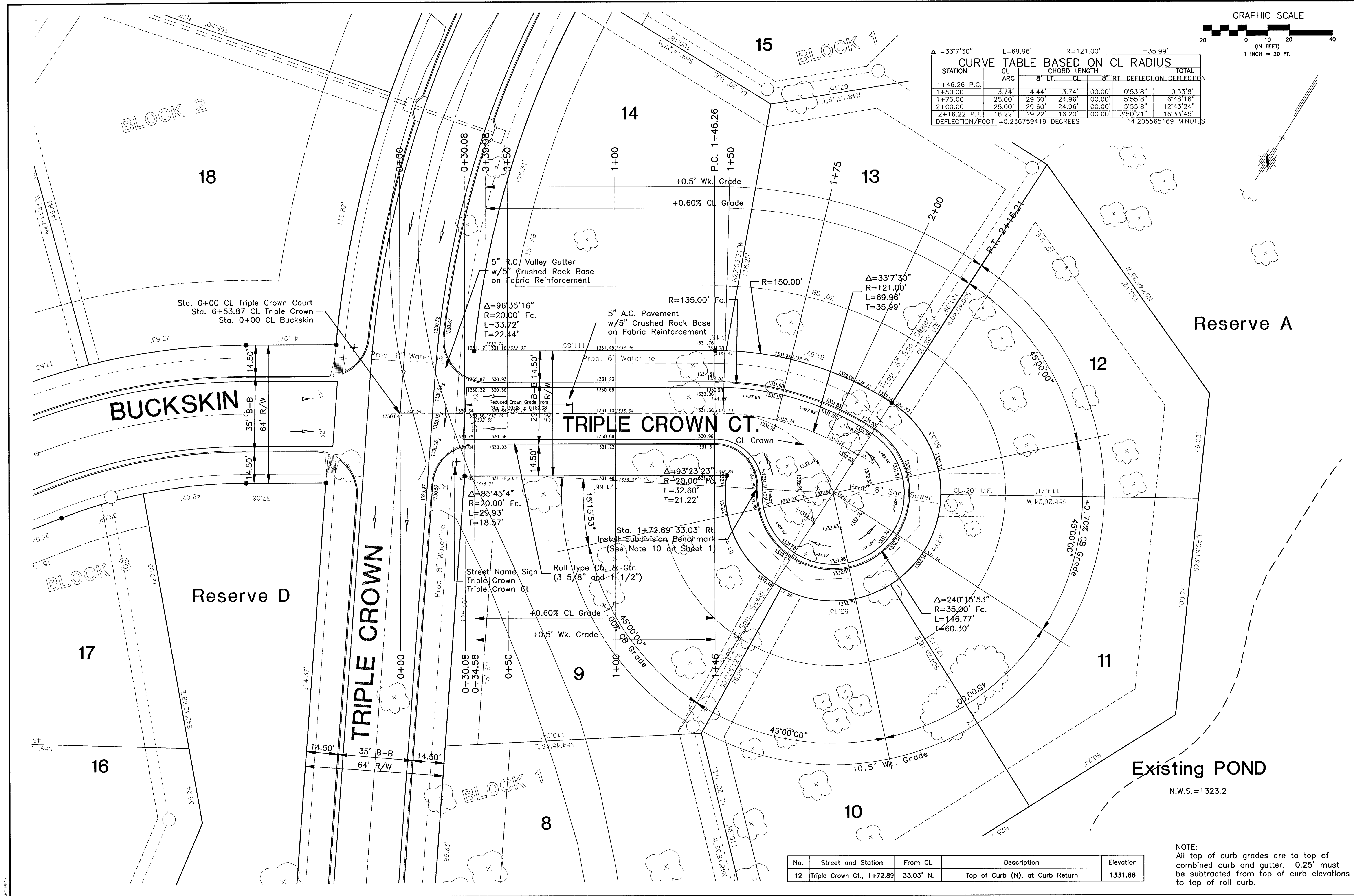
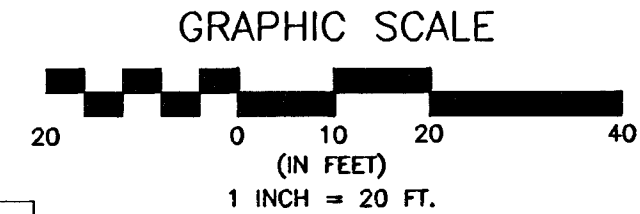


G:\APPS\DOCA\PLANS\BASE-ST\11.dwg P1 Mar 15 08:53:45 2002 James Ubart - Poe & Associates of Kansas, Inc.



CURVE TABLE BASED ON CL RADIUS

STATION	CL ARC	CHORD LENGTH	TOTAL DEFLECTION
1+46.26 P.C.			
1+50.00	3.74'	4.44'	0°53'8"
1+75.00	25.00'	24.96'	0°55'8"
2+00.00	25.00'	24.96'	0°55'8"
2+16.22 P.T.	16.22'	16.20'	16°33'45"
DEFLECTION/FOOT = 0.236759419 DEGREES		14.205565169 MINUTES	



EQUINE ESTATES - PHASE 1	
STREET IMPROVEMENTS	
TRIPLE CROWN COURT	
CITY OF WICHITA, KANSAS	
MICHAEL E. LINDBERGH, P.E. - CITY ENGINEER	
C.O.N. Project # 472-83424 O.C.A. # 765705	
POE & ASSOCIATES OF KANSAS, INC.	
CONSULTING ENGINEERS	
5940 E. Central, Suite 200 - Wichita, KS 67208-4242	
Phone 316/685-4114 - FAX 316/685-4444	
PE	
Designed By: J. Ubart / J. Dickman	Date: March 2002
Drawn By: J. Dickman	Sheet
Poe Job No.: 16944	16 of 112

No.	Street and Station	From CL	Description	Elevation
12	Triple Crown Ct., 1+72.89	33.03' N.	Top of Curb (N), at Curb Return	1331.86

NOTE:
All top of curb grades are to top of combined curb and gutter. 0.25' must be subtracted from top of curb elevations to top of roll curb.