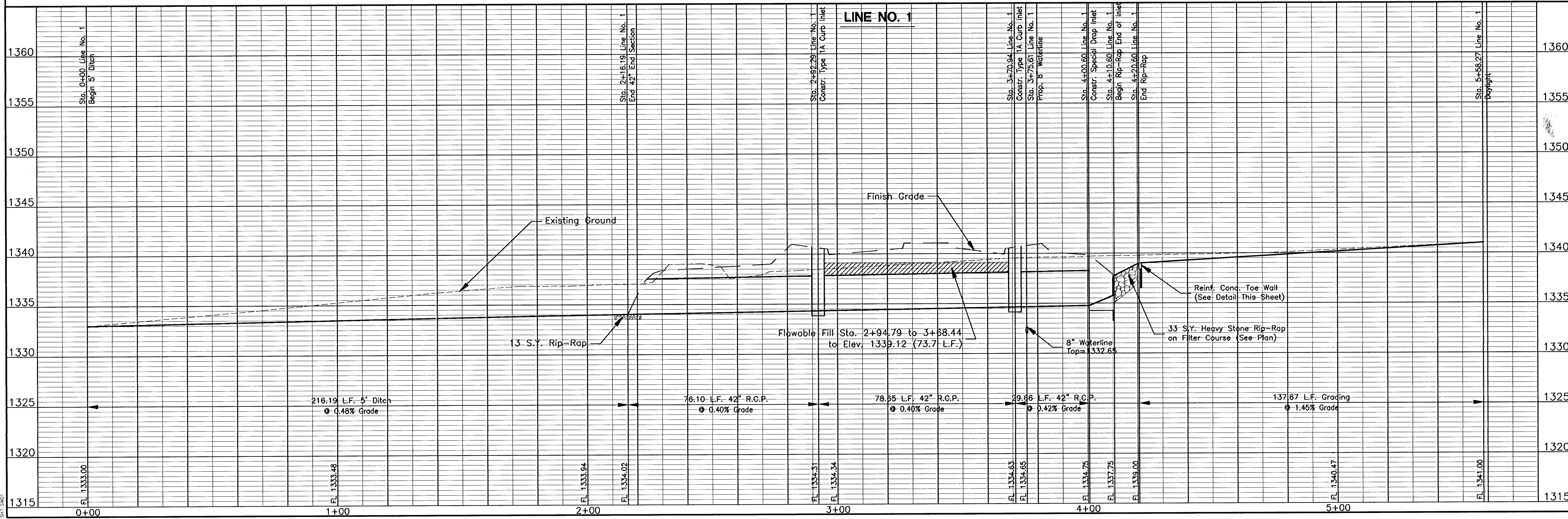
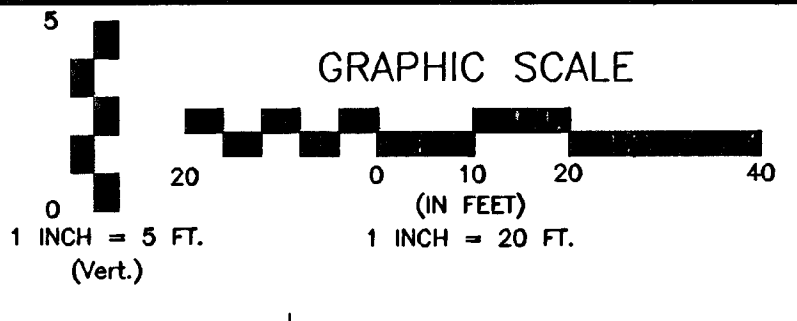
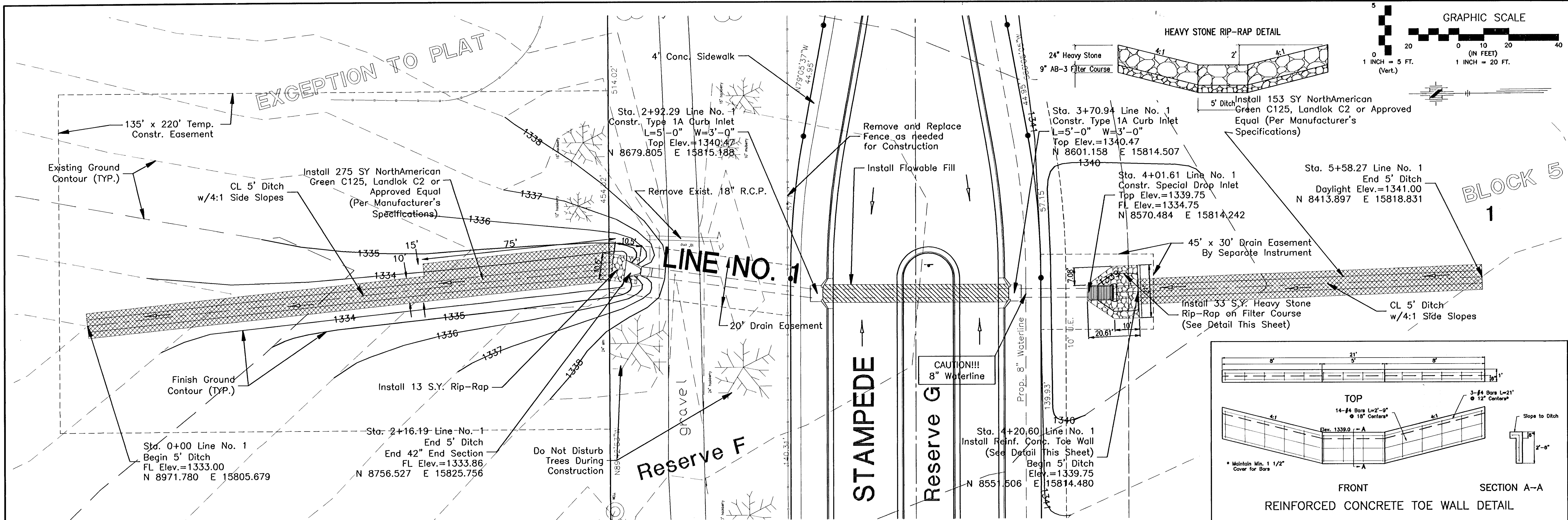


G:\APPS\DCAP\GSA\BASE-ST.dwg Thu Mar 28 15:01:04 2002 James Ubert - Poe & Associates of Kansas, Inc.



Revision				
By	Approve			
Date				
No.				

EQUESTRIAN ESTATES - PHASE 1
 STORM WATER SEWER
 LINE NUMBER 1
CITY OF WICHITA, KANSAS
 MICHAEL E. UNDERBAK, P.E. - CITY ENGINEER
 C.O.N. Proj# 472-83424 O.C.# 765705

POE & ASSOCIATES OF KANSAS, INC.
 CONSULTING ENGINEERS
 5940 E. Central, Suite 200 ■ Wichita, KS 67208-4242
 Phone 316/685-4114 ■ FAX 316/685-4444

FINAL
 Designed By: J. Ubert / J. Dickman
 Drawn By: J. Dickman
 P.O. Job No.: 16944
 Date: March 2002