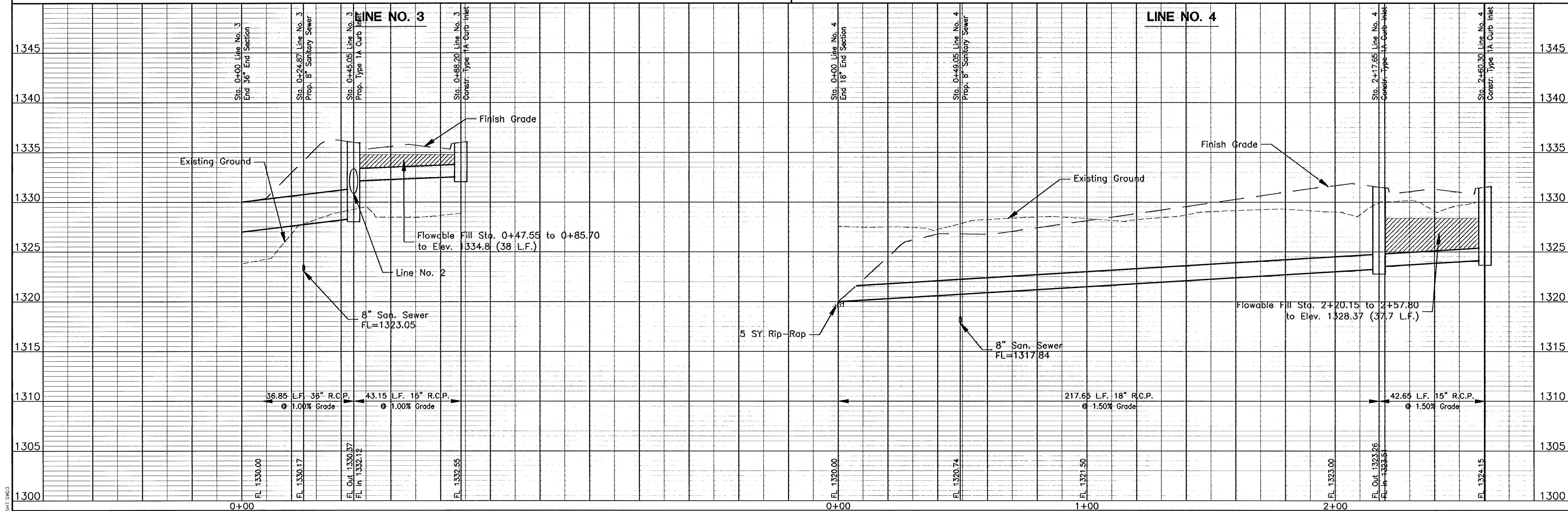
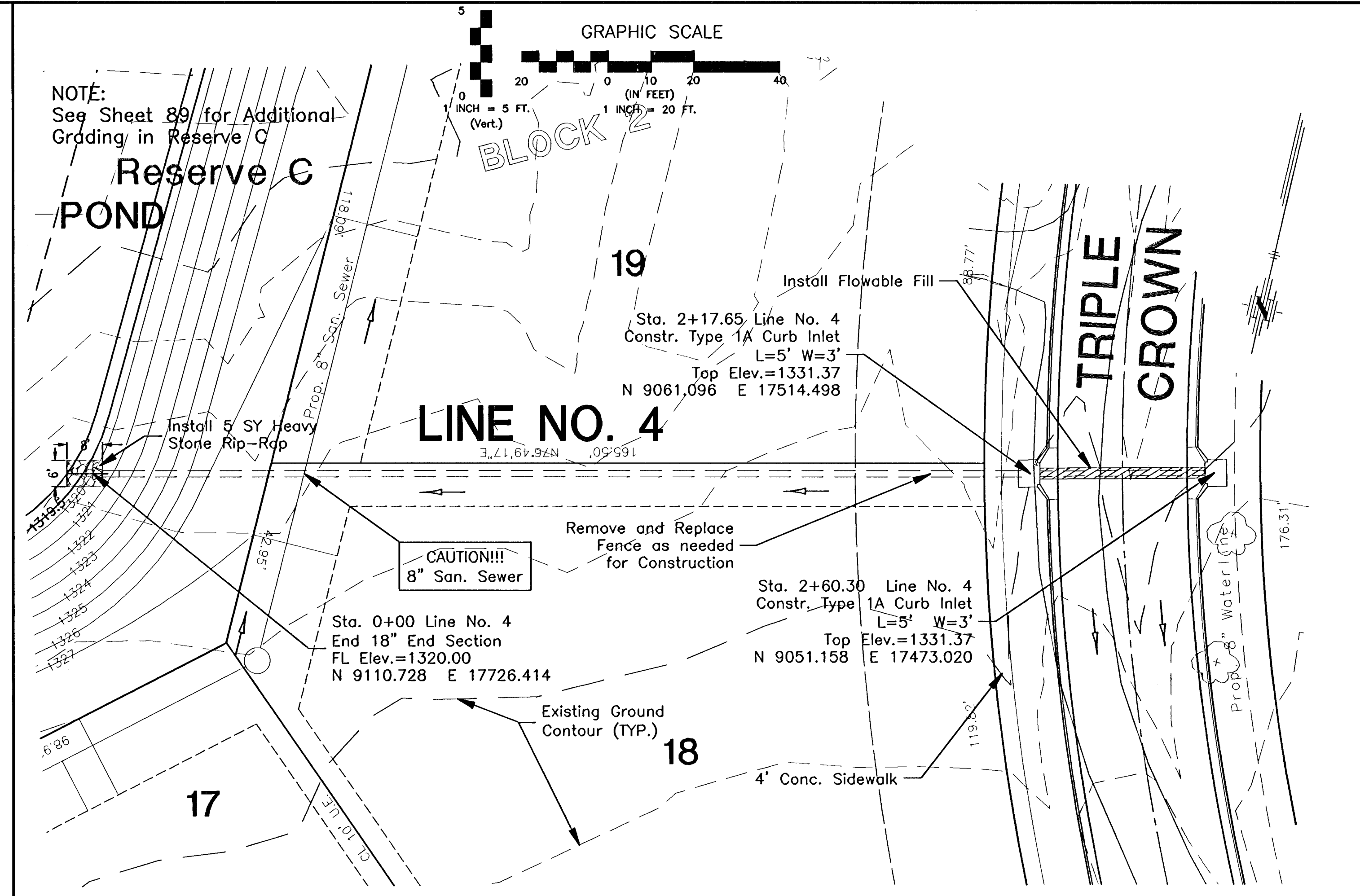
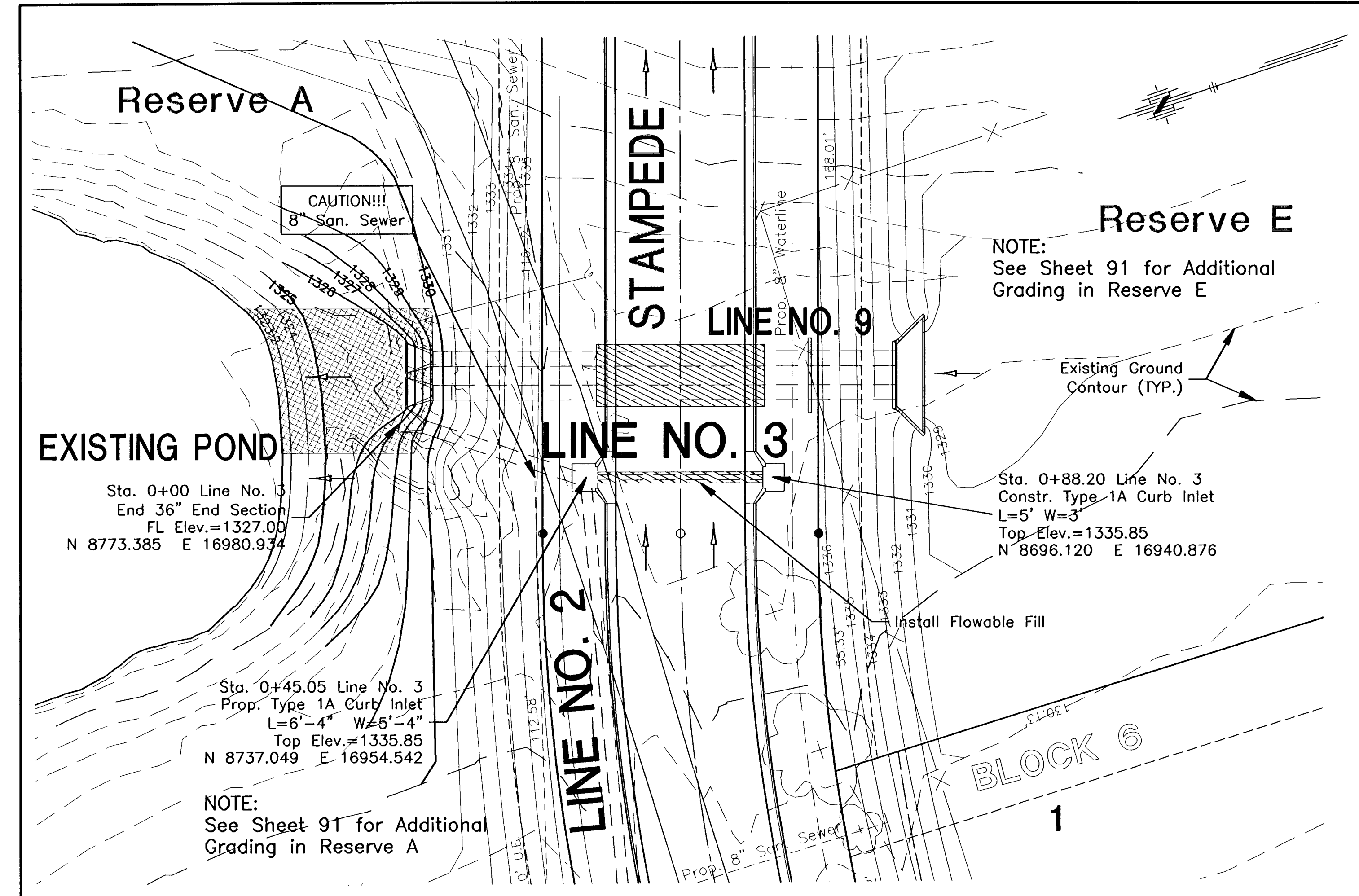


6: \APPS\DATA\B94\BASE-ST.dwg Mon Mar 26 10:12:17 2002 James Ubert - Poe & Associates of Kansas, Inc.



Revision	By	Date

EQUESTRIAN ESTATES - PHASE 1
STORM WATER SEWER
LINE NUMBER 3 & 4
CITY OF WICHITA, KANSAS
MICHAEL E. LINDBAK, P.E. - CITY ENGINEER
C.O.W. Proj.# 472-83424 O.C.A.# 765705

POE & ASSOCIATES OF KANSAS, INC.
CONSULTING ENGINEERS
5940 E. Central, Suite 200 • Wichita, KS 67208-0242
Phone 316-685-1114 • FAX 316-685-4444

FINAL

Designed By: J. Ubert / J. Dickman
Drawn By: J. Dickman
Poe Job No.: 1694A
Date: March 2002

Sheet
23 of 112