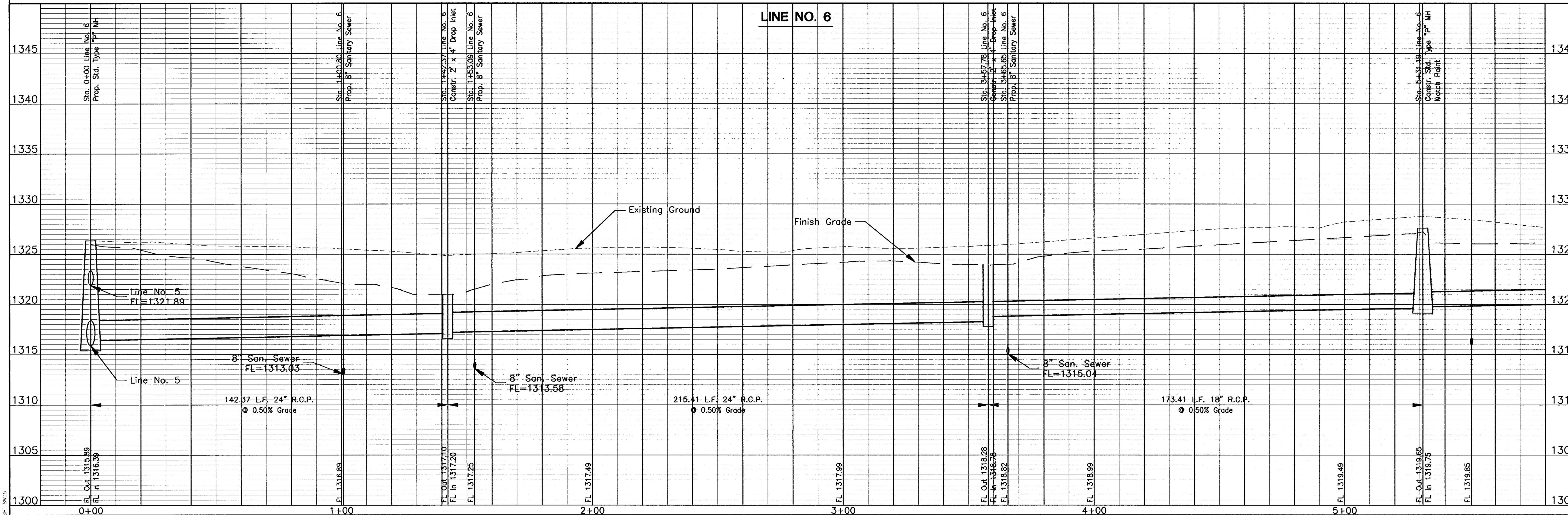
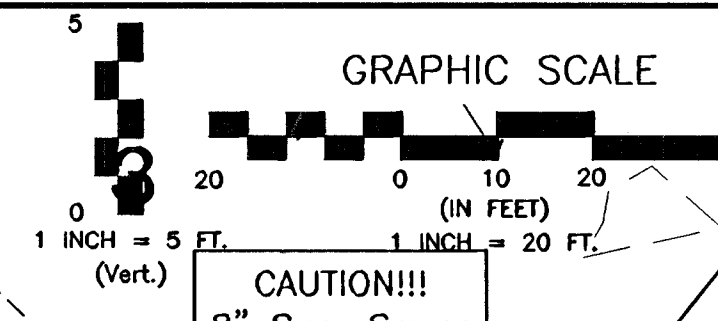
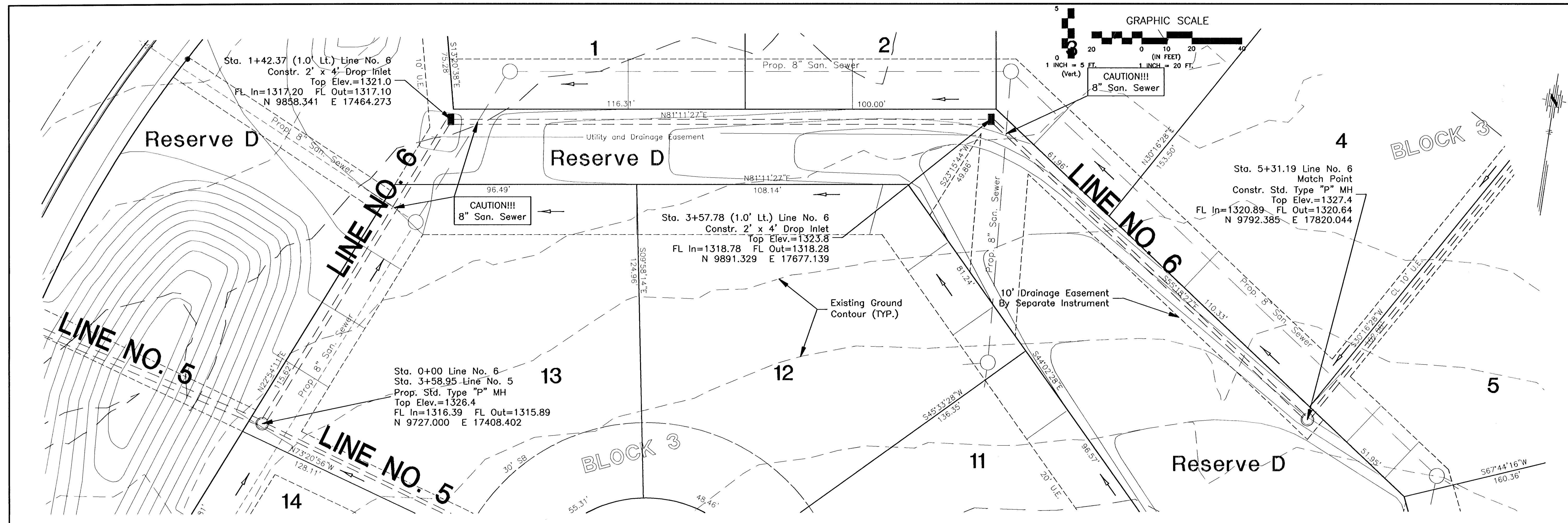


G:\APPS\DATA\PROJECTS\BASE-ST.dwg Mod: Mar 25 09:35:19 2002 James Libert - Poe & Associates of Kansas, Inc.



Revision	
Approved	
Date	
No.	

EQUESTRIAN ESTATES - PHASE 1
STORM WATER SEWER
LINE NUMBER 6
CITY OF WICHITA, KANSAS
MICHAEL E. LINDBERGH, P.E. - CITY ENGINEER
C.O.W. Proj# 472-83424 O.C.A.# 785705

POE & ASSOCIATES OF KANSAS, INC.
CONSULTING ENGINEERS
9540 E. Central, Suite 200 Wichita, KS 67208-4242
Phone 316.685-4114 FAX 316.685-4444

FINAL

Designed By: J. Libert / J. Dickman
Drawn By: J. Dickman
Poe Job No.: 1694A
Date: March 2002

Sheet
25 of 112