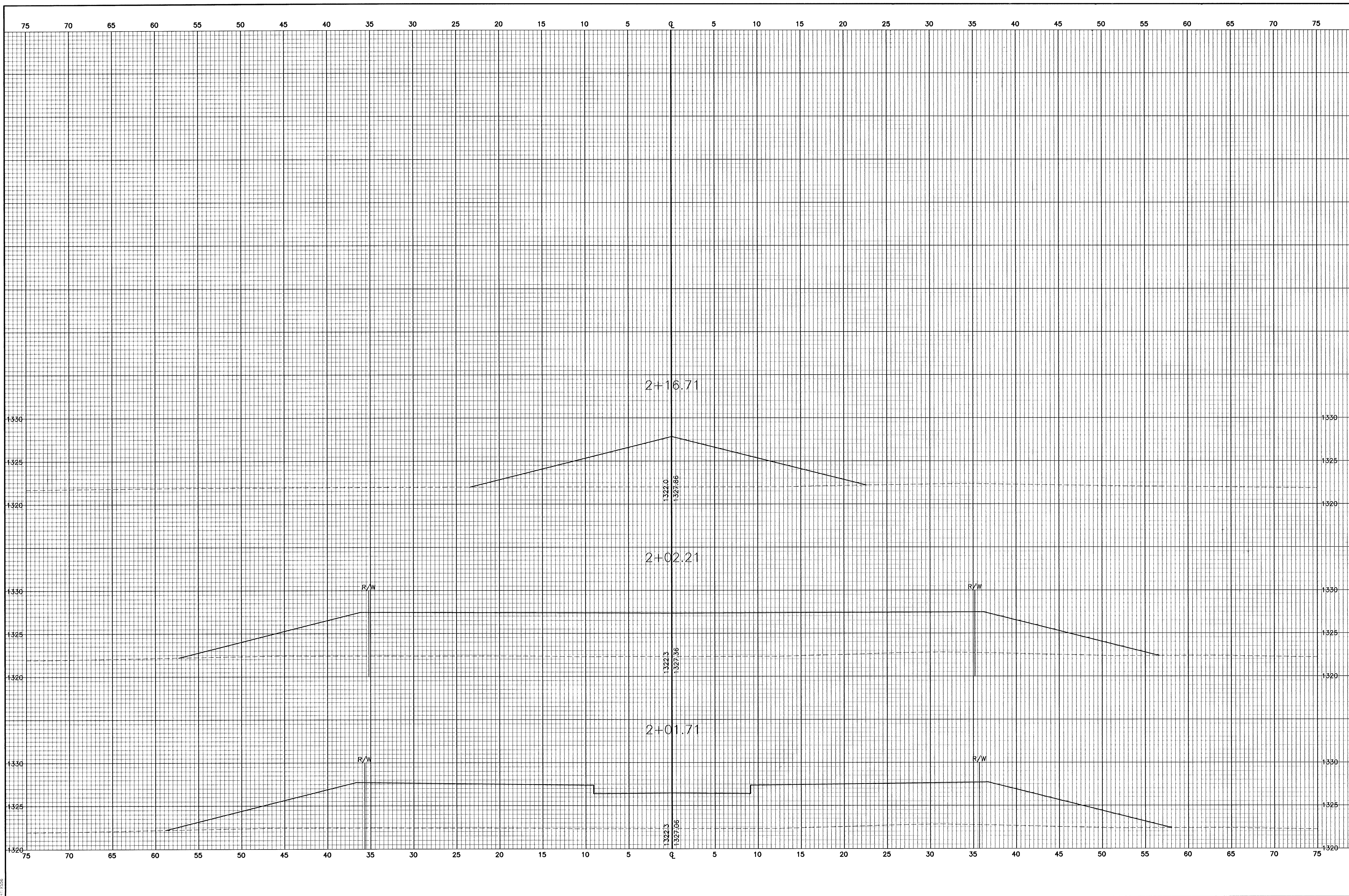


G:\APPS\UCR\68A\sections.dwg Fri Mar 15 09:55:23 2002 Bernard Kulla - POE & ASSOCIATES OF KANSAS, INC.

SPT 1558



Revision	
No.	By
Date	Approved
<p>EQUESTRIAN ESTATES - PHASE 1          CROSS SECTIONS          BUCKSKIN COURT          CITY OF WICHITA, KANSAS          MICHAEL E. UNDEBAK, P.E. - CITY ENGINEER          C.O.M. Proj.# 472-88424 O.C.A.# 765705</p>	
<p>POE &amp; ASSOCIATES OF KANSAS, INC.          CONSULTING ENGINEERS          5940 E. Central, Suite 200 • Wichita, KS 67208-4242          Phone: 316/685-4114 • FAX: 316/685-4444</p>	
<p><b>POE</b></p>	
<p><b>FINAL</b></p>	
Designed By:	J. Ubert / J. Dickman
Drawn By:	J. Dickman
File Job No.:	1694A
Date:	March 2002
<p>Sheet          85 of 112</p>	