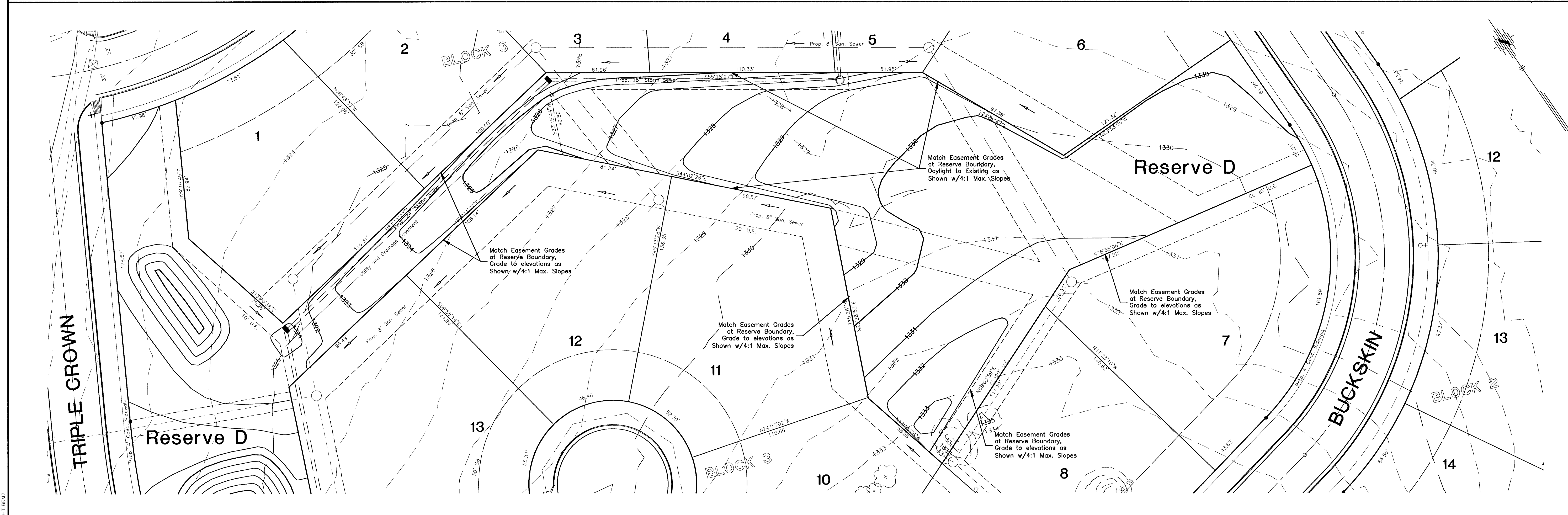
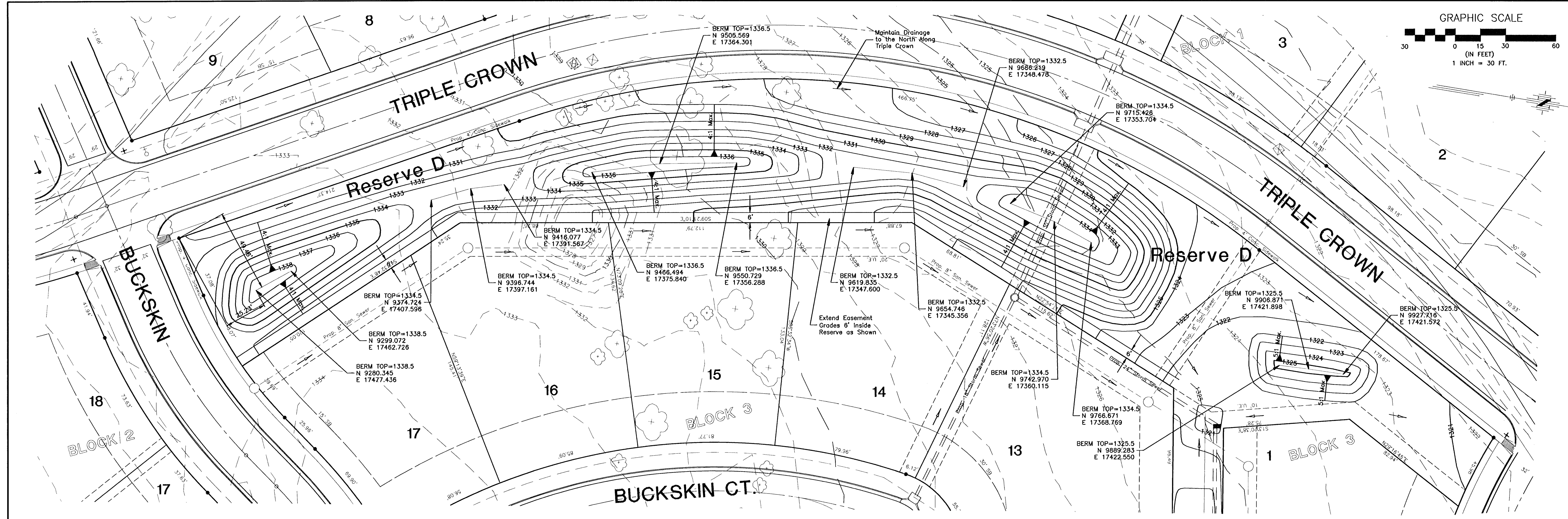


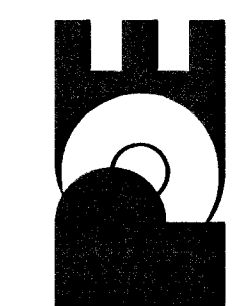
G:\APPS\DATA\DESIGN\BASE ST.dwg Thu Mar 21 14:25:59 2002 Bernard Kullia - POE & ASSOCIATES OF KANSAS, INC.



No.	Date	By	Approved	Revision

EQUESTRIAN ESTATES - PHASE 1
STREET IMPROVEMENTS
BERM GRADING PLAN
CITY OF WICHITA, KANSAS
MICHAEL E. LINDBERGH, P.E. - CITY ENGINEER
C.O.W. Project # 472-83424 O.C.A. # 765705

POE & ASSOCIATES OF KANSAS, INC.
CONSULTING ENGINEERS
590 E. Central, Suite 200 • Wichita, KS 67208-4242
Phone 316/685-1114 • FAX 316/685-4444



FINAL
Designed By: J. Ubert / J. Dickman
Drawn By: J. Dickman
Poe Job No.: 1894A
Date: March 2002

Sheet
91 of 112