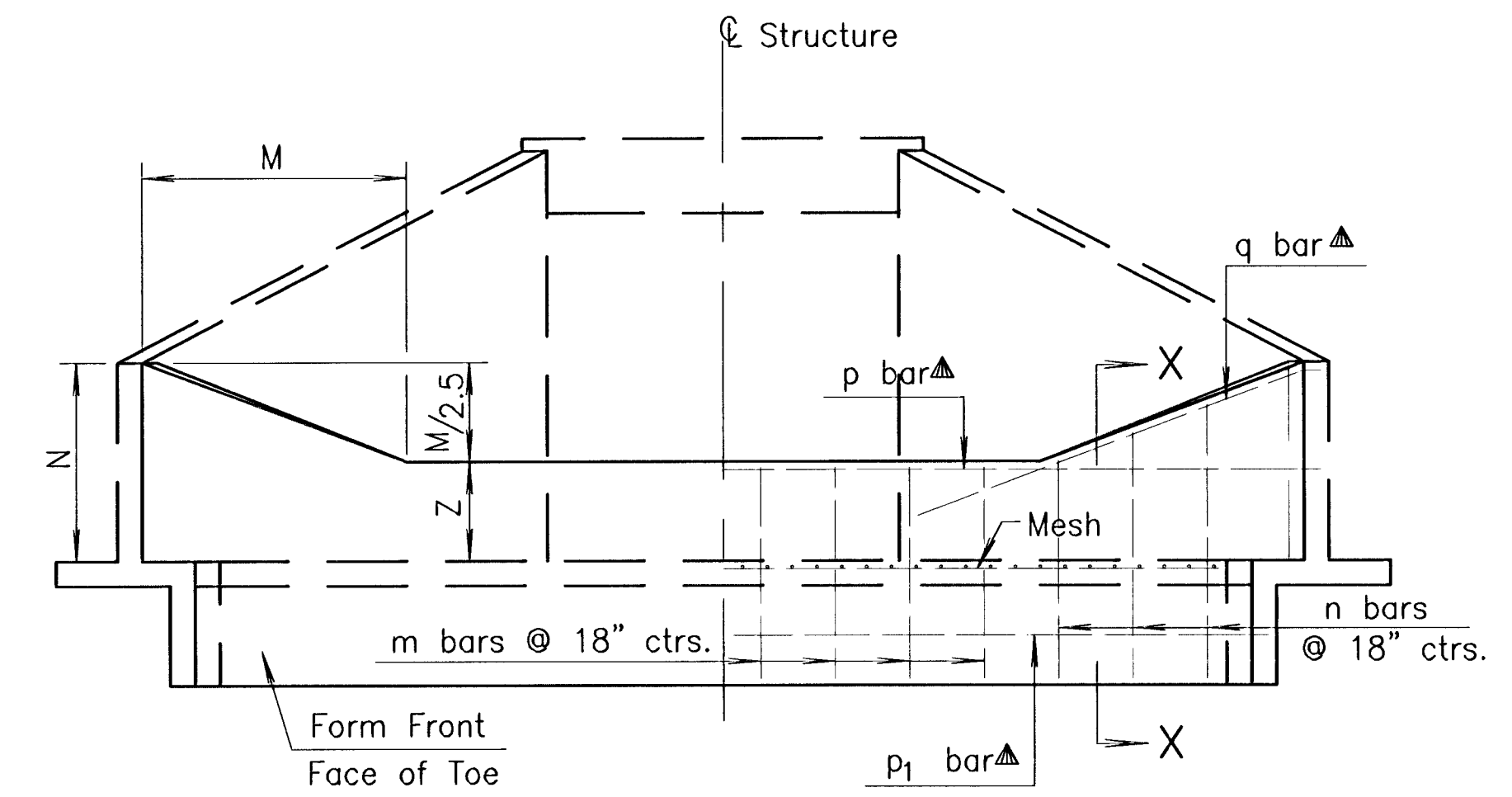


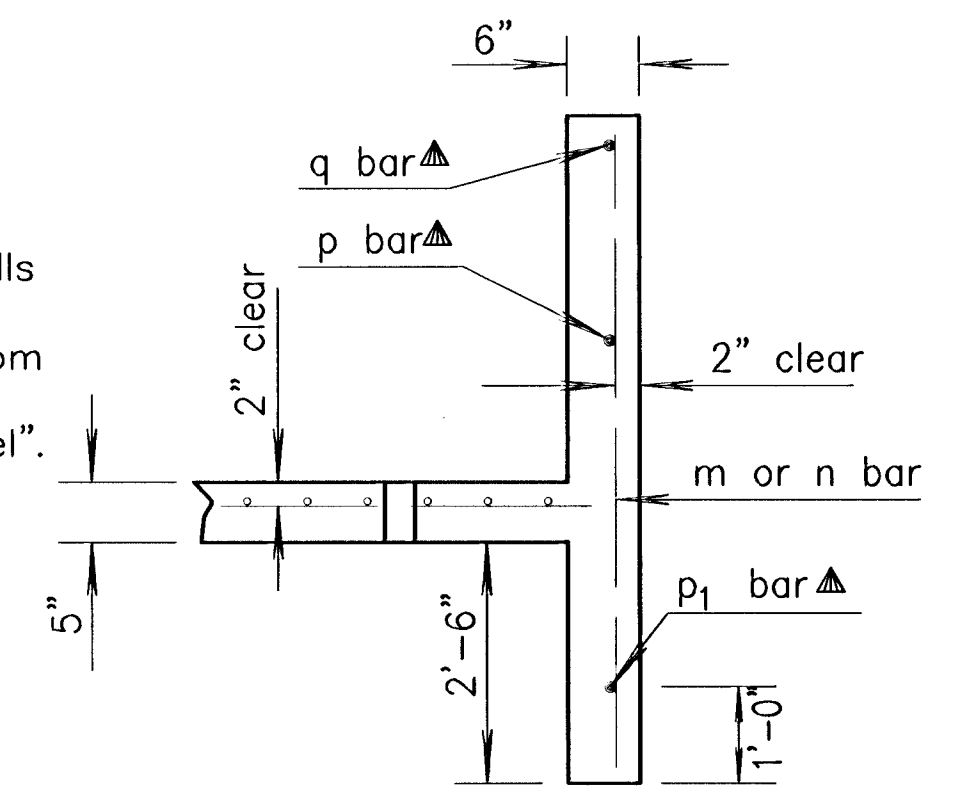
PLAN



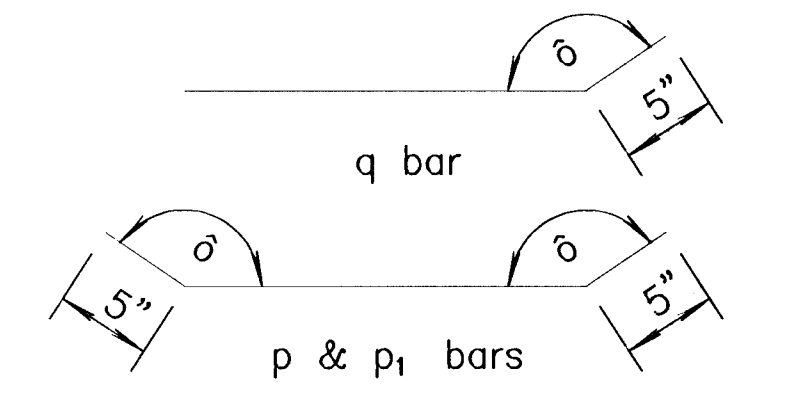
ELEVATION AND SECTION

GENERAL NOTE
 CONCRETE: Class AAA Concrete shall be used throughout.
 All exposed edges shall be finished with an edging tool.
 REINFORCING: All dimensions are to ϕ of bar except where noted. All reinforcing bars are No. 4. Reinforcing bars shall be Grade 60 billet steel. Minimum clearance on all reinforcement shall be 2". Weight of welded wire mesh is 21 lbs. per 100 sq. ft. Mesh shall be paid as pounds of reinforcing steel.
 When holes in the apron are warranted by drainage conditions they shall be constructed as directed by the Engineer.

▲ Drill and grout p and q bars into wingwalls and p₁ bar into wing footings when the soil saver end wall is constructed separately from the wingwalls. Drilling and grouting shall be Subsidiary to the bid item "Reinforcing Steel".



SECTION X-X



δ Angle varies according to skew of RCB. Bars shall be field bent.

BENDING DIAGRAMS

SUMMARY OF SOIL SAVERS

Station	Culvert Size	Side	Z	Skew

STATION	SIDE										Skew	Z= 2'-0"
Letter	B	C	K _L	K _S	L _L	L _S	M	N	P	P ₁	P _S	Q
Dimension							4'-6"	3'-5"	26'-9"			
Bar	m	n*	p	p ₁	q		Sq. Ft. Mesh					
Number							Class "AAA" Conc.					Cu.Yd.
Length							Reinf. steel					Lbs.

STATION	SIDE										Skew	Z=
Letter	B	C	K _L	K _S	L _L	L _S	M	N	P	P ₁	P _S	Q
Dimension												
Bar	m	n*	p	p ₁	q		Sq. Ft. Mesh					
Number							Class "AAA" Conc.					Cu.Yd.
Length							Reinf. steel					Lbs.

STATION	SIDE										Skew	Z=
Letter	B	C	K _L	K _S	L _L	L _S	M	N	P	P ₁	P _S	Q
Dimension												
Bar	m	n*	p	p ₁	q		Sq. Ft. Mesh					
Number							Class "AAA" Conc.					Cu.Yd.
Length							Reinf. steel					Lbs.

STATION	SIDE										Skew	Z=
Letter	B	C	K _L	K _S	L _L	L _S	M	N	P	P ₁	P _S	Q
Dimension												
Bar	m	n*	p	p ₁	q		Sq. Ft. Mesh					
Number							Class "AAA" Conc.					Cu.Yd.
Length							Reinf. steel					Lbs.

STATION	SIDE										Skew	Z=
Letter	B	C	K _L	K _S	L _L	L _S	M	N	P	P ₁	P _S	Q
Dimension												
Bar	m	n*	p	p ₁	q		Sq. Ft. Mesh					
Number							Class "AAA" Conc.					Cu.Yd.
Length							Reinf. steel					Lbs.

Quantities include apron and soil saver end wall.

*n bars are variable, increase by increments of 7". Cut 2 each length.

-KANSAS DEPARTMENT OF TRANSPORTATION-
SOIL SAVER
FOR R.C. CULVERTS

RD520

DESIGNED	8-23-00	APP'D.	James O. Brewer
DESIGN CK.		TRACKED	Bowser
		QUANTITIES	
			TRACE CK. Setz

EQUESTRIAN ESTATES - PHASE 1
 STREET IMPROVEMENTS
 SOIL SAVER DETAILS
 CITY OF WICHITA, KANSAS
 MICHAEL E. LINDBERGH, P.E. - CITY ENGINEER
 C.O.W. Project # 472-83424 O.C.A. # 765705

POE & ASSOCIATES OF KANSAS, INC.
 CONSULTING ENGINEERS
 5940 E. Central, Suite 200 Wichita, KS 67208-4242
 Phone 316/685-4114 • FAX 316/685-4444

FINAL
 Designed By: J. Libert / J. Dickman
 Drawn By: J. Dickman
 Fee Job No.: T694A
 Date: March 2002

Sheet
 94 of 112