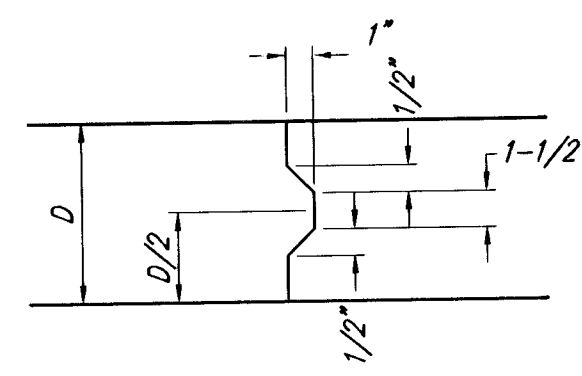
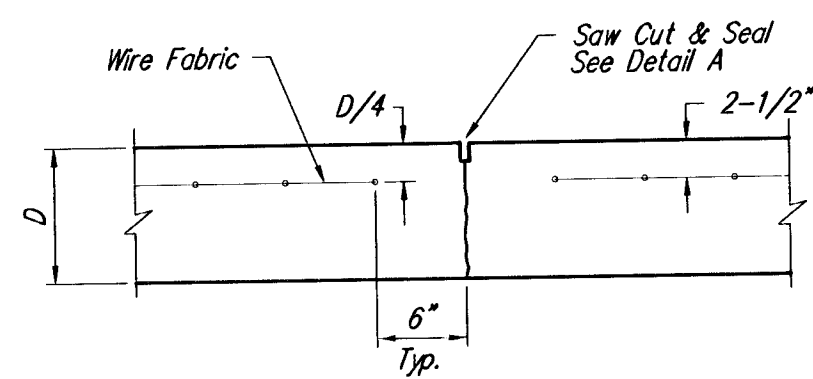


**EXPANSION JOINT**

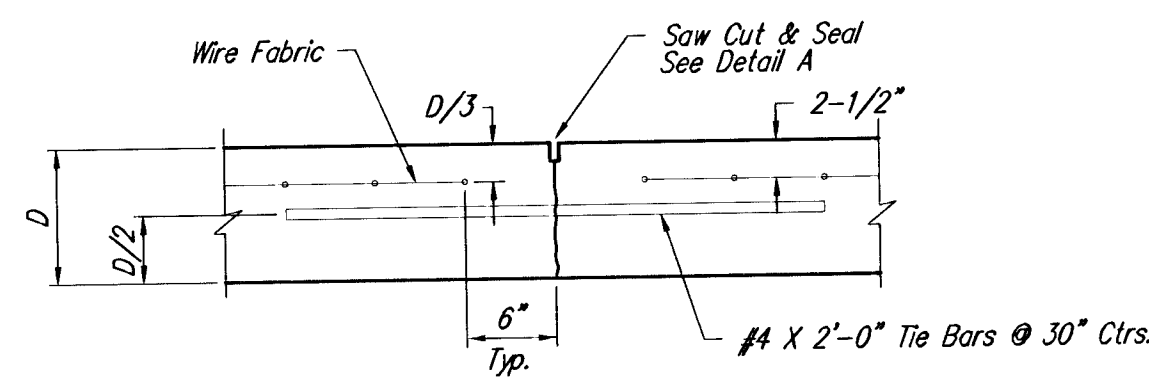
NOTE: Extra Thickness to be Subsidiary to Price of Square Yards Pavement



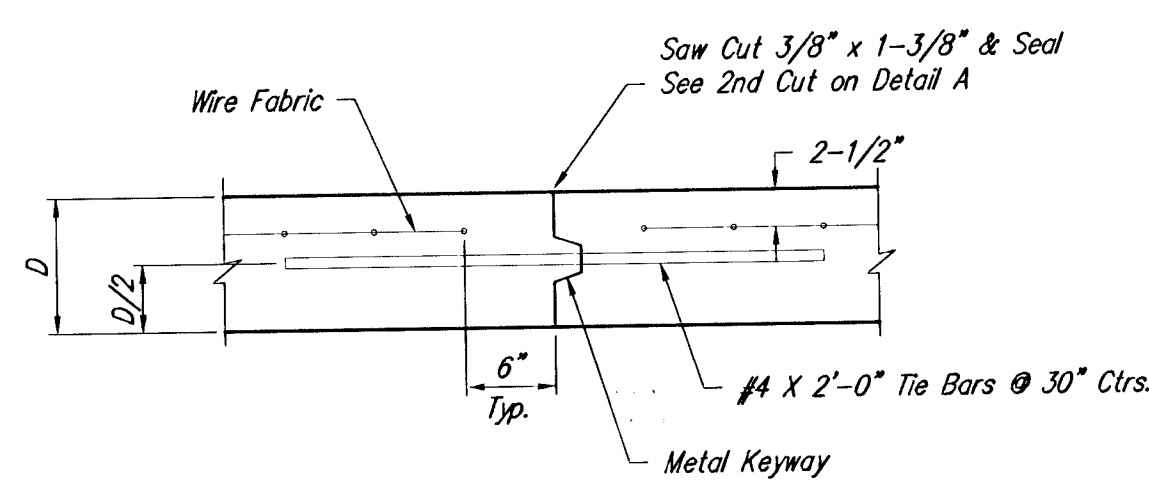
**KEYWAY DETAIL**



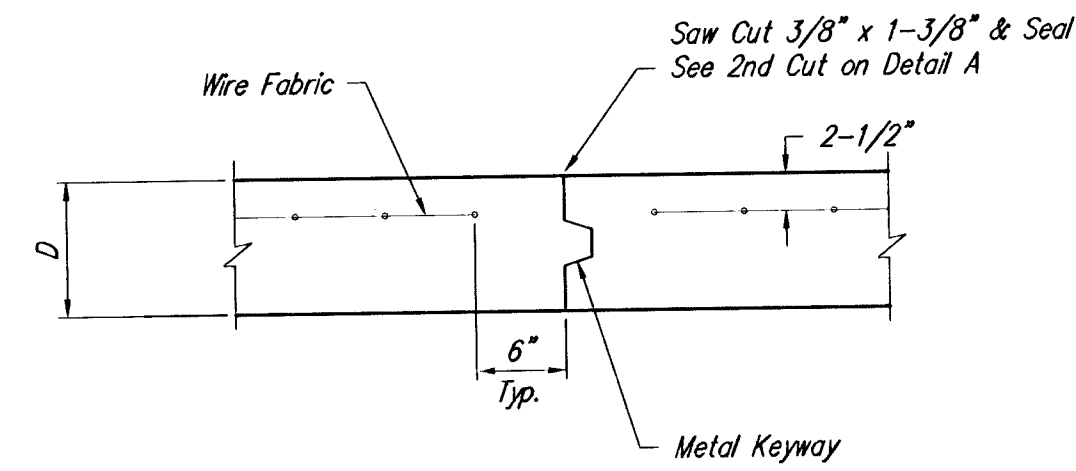
**CONTRACTION JOINT DETAIL (C.J.)**



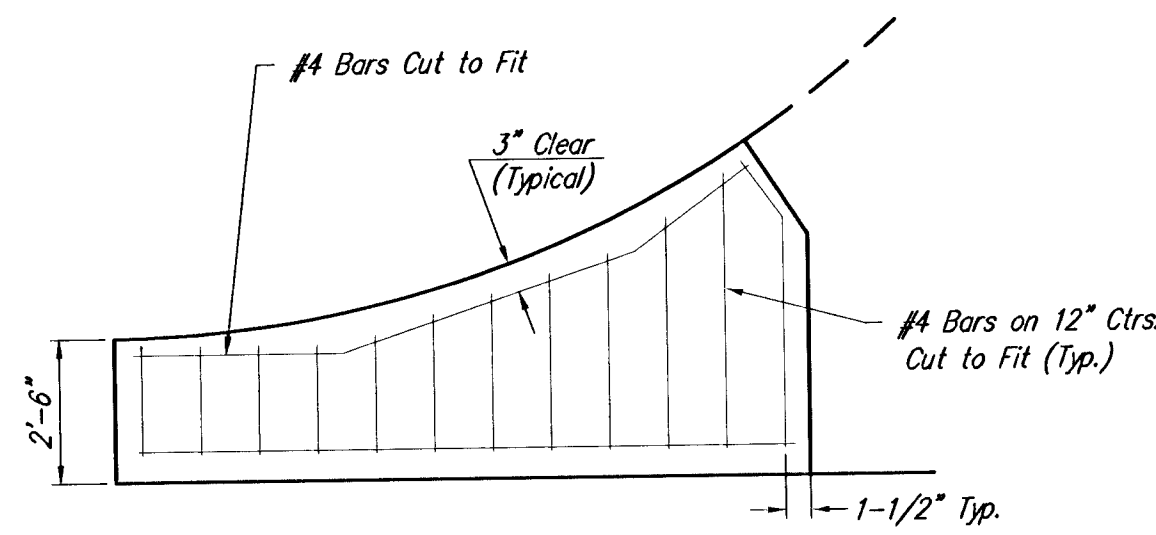
**LONGITUDINAL JOINT DETAIL (L.J.)**



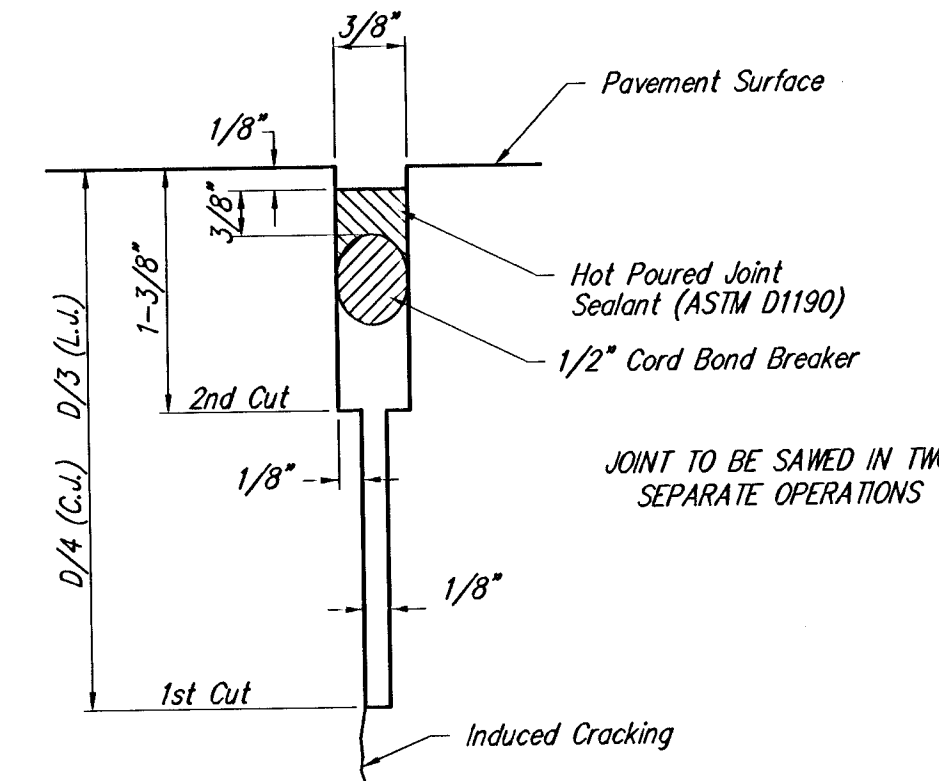
**OPTIONAL LONGITUDINAL JOINT DETAIL (L.J.)**



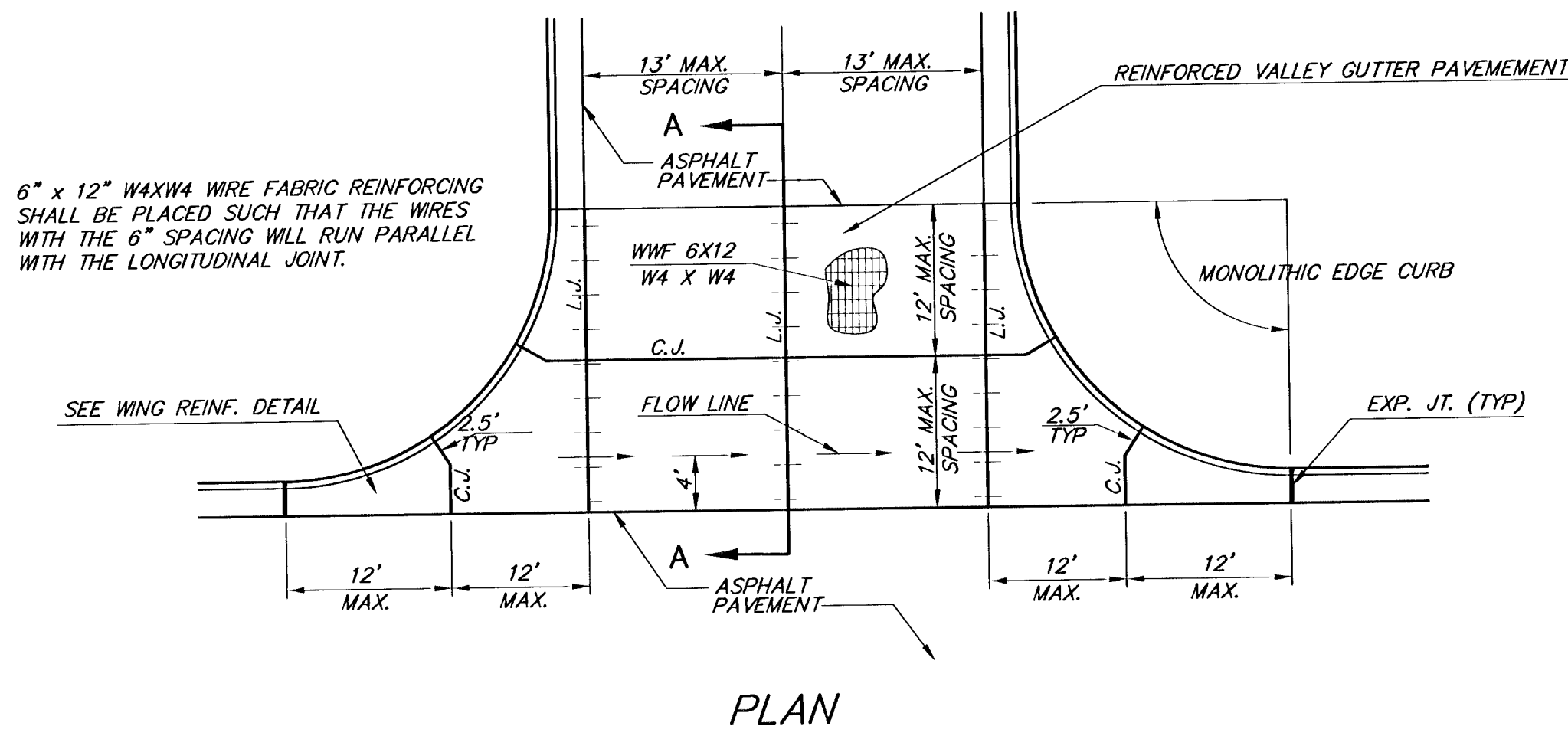
**OPTIONAL CONTRACTION JOINT**



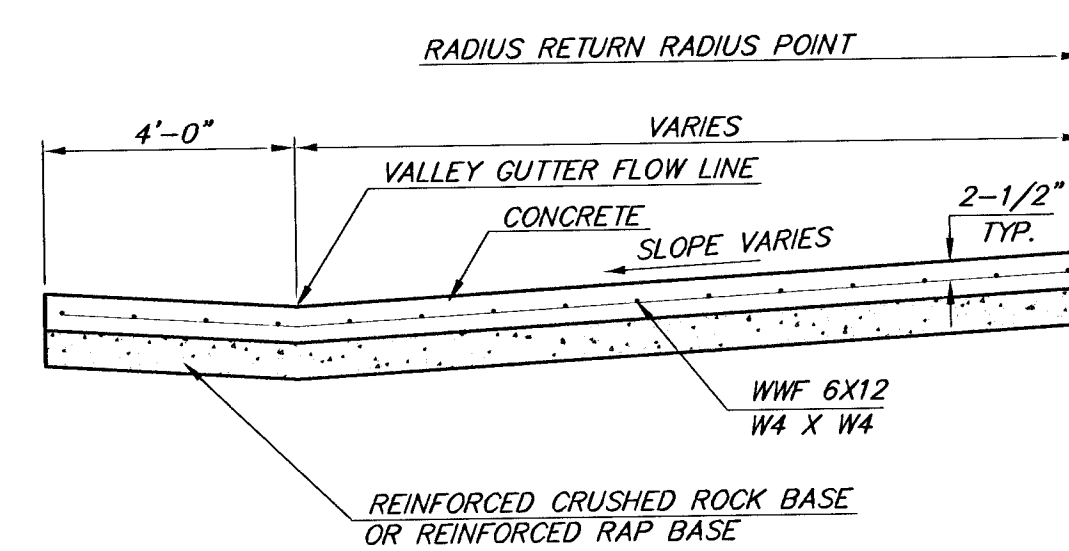
**WING REINFORCING DETAIL**



**SAW JOINT DETAIL**

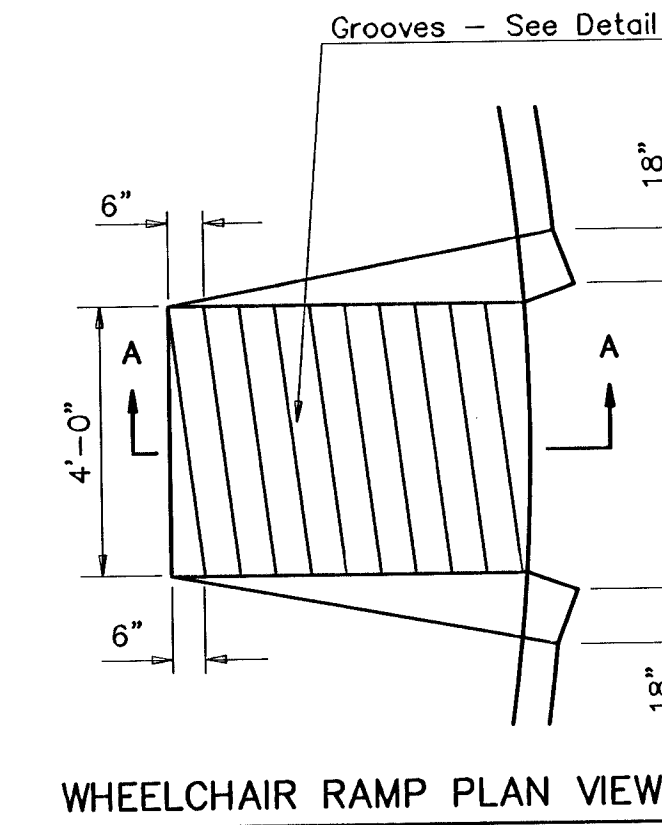


**PLAN**

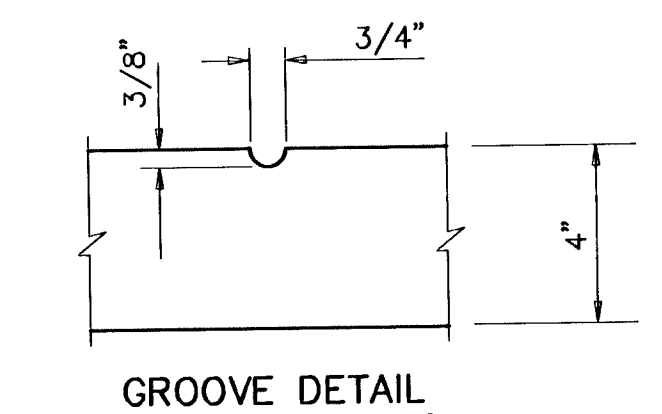


**SECTION A-A**

**REINFORCED VALLEY GUTTER DETAIL**

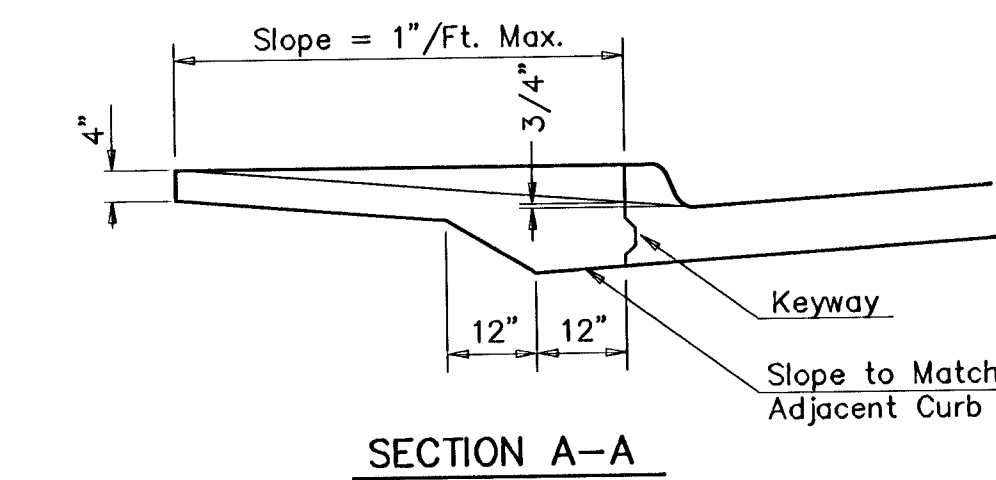


**WHEELCHAIR RAMP PLAN VIEW**

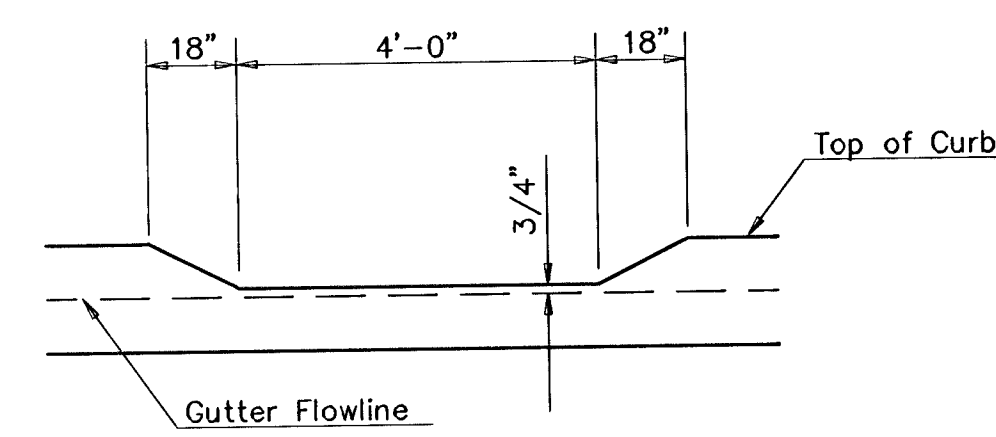


**GROOVE DETAIL**

**WHEELCHAIR RAMP DETAIL**



**SECTION A-A**



**DEPRESSED CURB DETAIL**

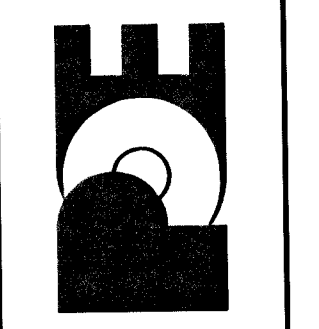
THE CITY OF WICHITA  
  
 CITY ENGINEER'S OFFICE  
 425 NORTH MAIN STREET  
 WICHITA, KANSAS 67202  
 (316) 268-4501  
 (316) 268-4114 FAX

**VALLEY GUTTER DETAILS**  
**WHEELCHAIR RAMP**  
**DETAILS**  
 M. E. INDEBAK P.E. - CITY ENGINEER  
 PROJECT NUMBER: 472-83424  
 INDEX CODE: 765705  
 DATE: MAR 96  
 SHEET 102 OF 112

**FINAL**  
 Designed By: J. Ubert / J. Dickman  
 Drawn By: J. Dickman  
 P.O. Job No.: 1684A  
 Date: March 2002

EQUESTRIAN ESTATES - PHASE 1  
 STREET IMPROVEMENTS  
 VALLEY GUTTER / WHEELCHAIR RAMP DETAILS  
 CITY OF WICHITA, KANSAS  
 MICHAEL E. LINDEBAK, P.E. - CITY ENGINEER  
 C.O.N. Project # 472-83424 O.C.A. # 765705

POE & ASSOCIATES OF KANSAS, INC.  
 CONSULTING ENGINEERS  
 5940 E. Central, Suite 200 • Wichita, KS 67208-4242  
 Phone 316/685-4114 • FAX 316/685-4444



6: \APPS\DCAP\684\BASE-ST.dwg Thu Mar 21 14:35:19 2002 Bernara Kujala - POE & ASSOCIATES OF KANSAS INC.