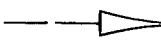




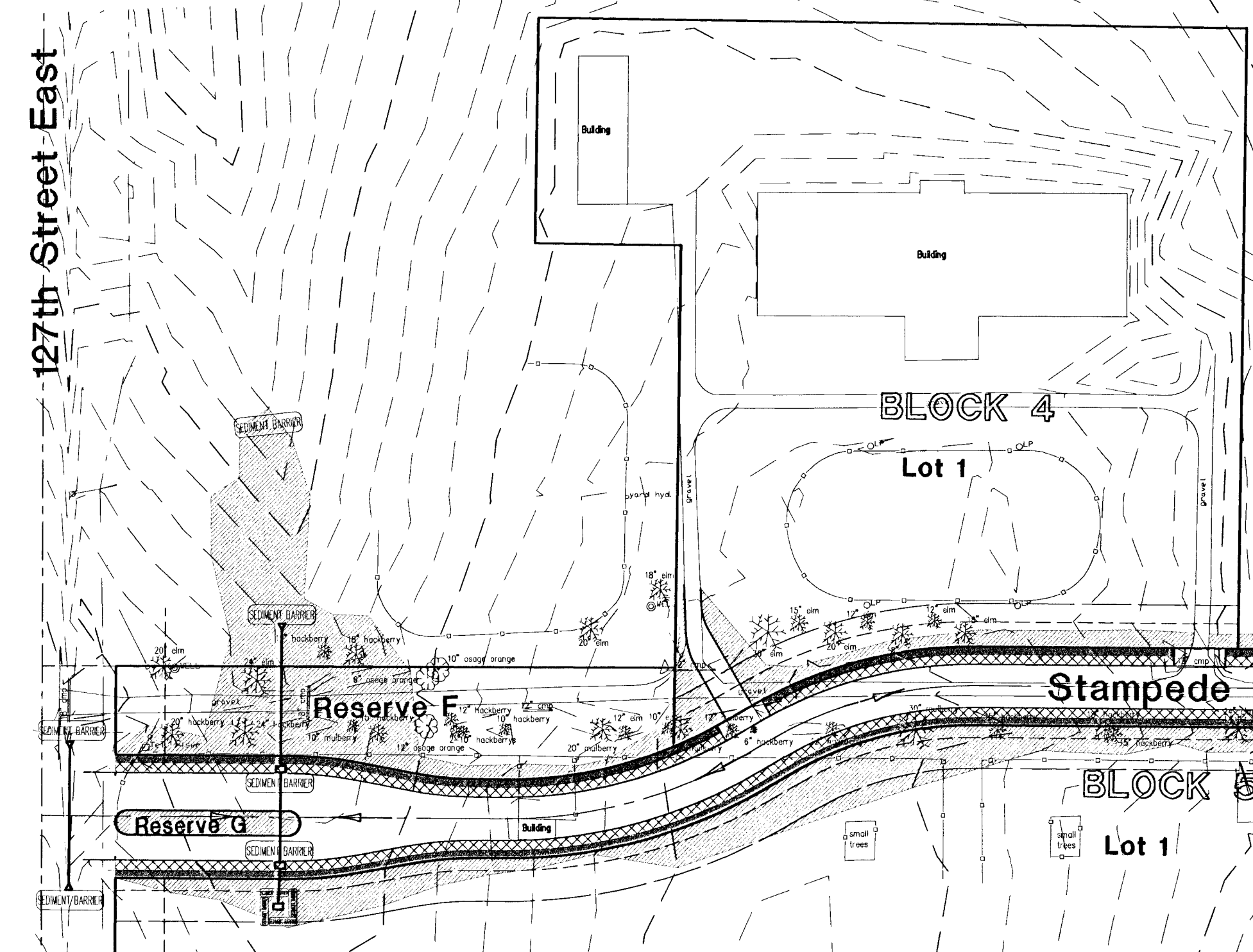
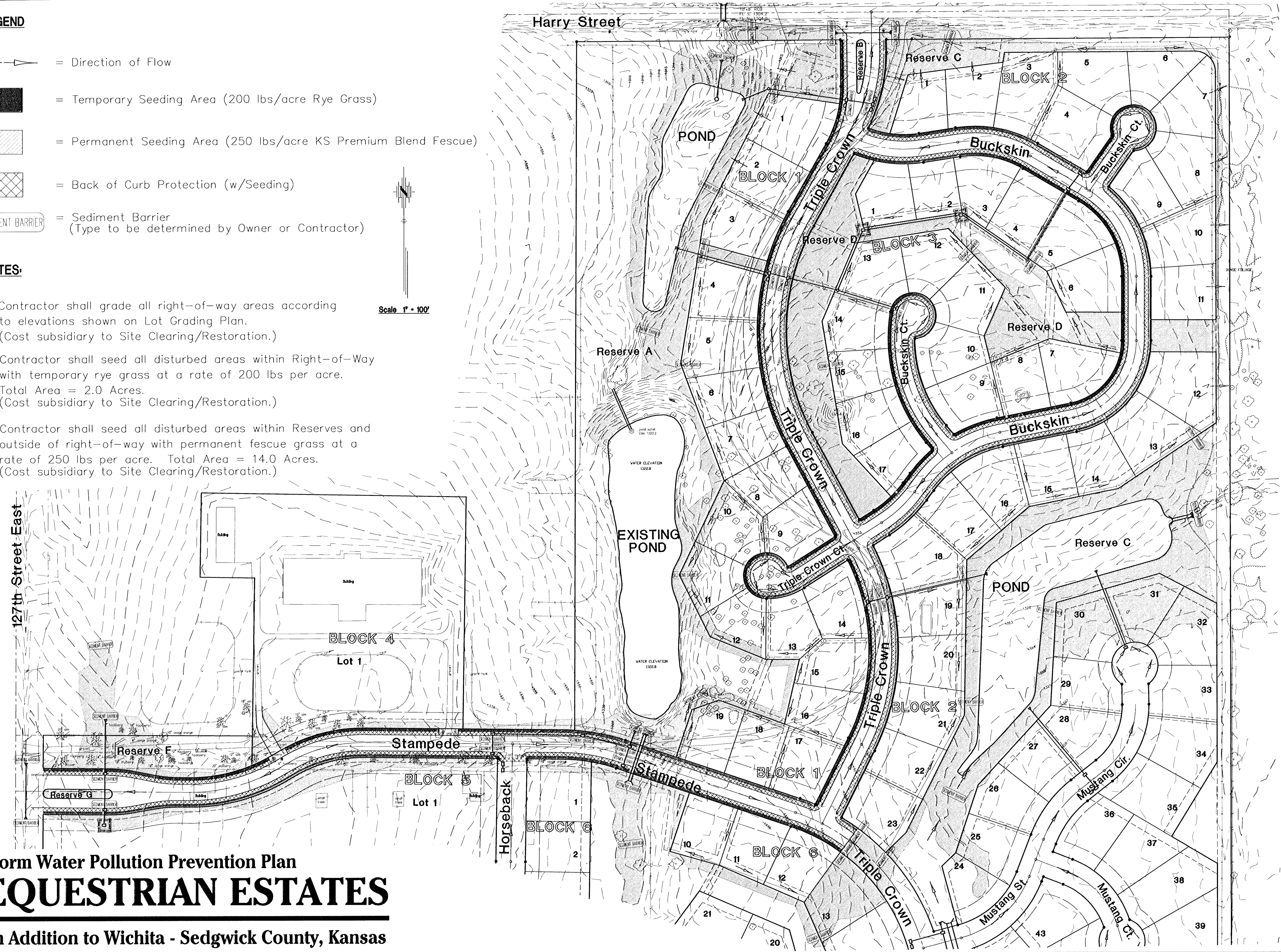
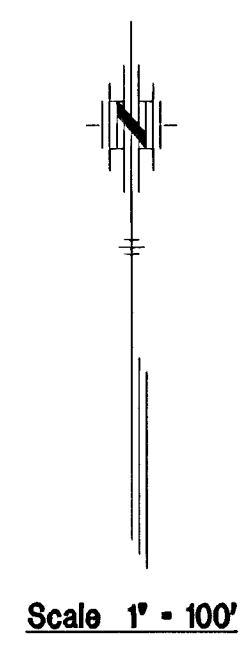


LEGEND

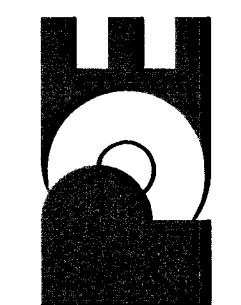
-  = Direction of Flow
-  = Temporary Seeding Area (200 lbs/acre Rye Grass)
-  = Permanent Seeding Area (250 lbs/acre KS Premium Blend Fescue)
-  = Back of Curb Protection (w/Seeding)
-  = SEDIMENT BARRIER (Type to be determined by Owner or Contractor)

NOTES:

1. Contractor shall grade all right-of-way areas according to elevations shown on Lot Grading Plan. (Cost subsidiary to Site Clearing/Restoration.)
2. Contractor shall seed all disturbed areas within Right-of-Way with temporary rye grass at a rate of 200 lbs per acre. Total Area = 2.0 Acres. (Cost subsidiary to Site Clearing/Restoration.)
3. Contractor shall seed all disturbed areas within Reserves and outside of right-of-way with permanent fescue grass at a rate of 250 lbs per acre. Total Area = 14.0 Acres. (Cost subsidiary to Site Clearing/Restoration.)



Storm Water Pollution Prevention Plan
EQUESTRIAN ESTATES
 An Addition to Wichita - Sedgwick County, Kansas

EQUESTRIAN ESTATES - PHASE 1 STREET IMPROVEMENTS STORM WATER POLLUTION PREVENTION PLAN CITY OF WICHITA, KANSAS MICHAEL E. LUNCEBAK, P.E., CITY ENGINEER C.O.W. Project # 472-83424 C.S.A. # 765705	
POE & ASSOCIATES OF KANSAS, INC. CONSULTING ENGINEERS 5940 E. Central, Suite 200 • Wichita, KS 67208-4342 Phone 316/685-1114 • FAX 316/685-4444	
FINAL Designed By: J. Ubert / J. Dickman Drawn By: J. Dickman P.O. Job No.: 16944 Date: March 2002	Revision No. Date By Approved
Sheet 110 of 112	

G:\APPS\DATA\16944\Lot_grading1.dwg Tue Mar 26 12:11:56 2002 Jason Dickman, PoE & Associates of Kansas, Inc.