

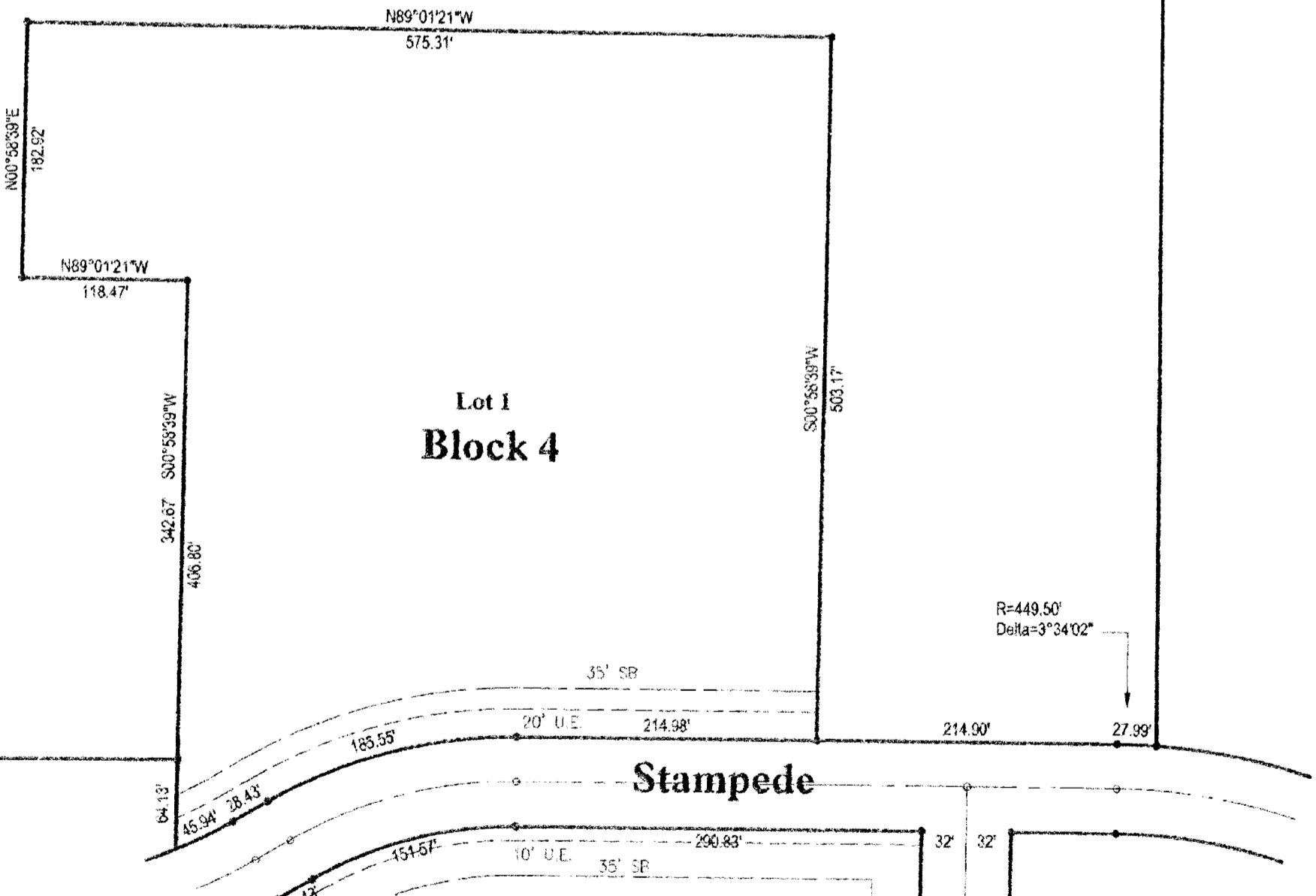
NW Corner, NW 1/4 Section 35-27-2E Found 3/4" Pipe

CURVE	LENGTH	RADIUS	TANGENT	CHORD	BEARING	DELTA
C1	215.00	50.00	76.45	83.69	S33°49'50"W	246°22'29"
C2	66.72	150.00	44.51	85.52	N74°04'50"E	33°07'30"
C3	126.47	250.00	66.22	128.03	N14°26'35"E	29°40'20"
C4	164.88	318.00	84.23	152.85	N14°25'39"E	29°40'20"
C5	232.25	500.00	116.60	216.30	S59°09'56"W	110°09'56"
C6	393.51	770.00	193.20	352.60	N46°59'56"E	21°02'20"
C7	69.96	175.00	43.73	85.98	N74°04'50"E	33°07'30"
C8	91.26	227.00	58.07	109.35	S45°51'37"W	19°45'41"
C9	277.90	521.00	148.27	309.21	S15°09'39"E	42°33'04"
C10	223.44	560.00	111.62	250.00	S59°09'56"W	110°09'56"
C11	498.88	1247.00	247.44	496.88	S00°31'23"W	57°30'43"
C12	194.51	486.00	117.36	250.00	S79°57'28"E	37°42'09"
C13	232.45	581.00	138.93	215.15	N39°21'27"E	78°30'45"
C14	113.81	284.00	69.45	113.33	S66°55'39"W	23°22'23"
C15	220.39	550.00	110.19	211.29	N62°33'51"W	57°29'52"
C16	163.71	409.00	85.19	160.56	N79°16'02"W	39°05'01"
C17	9.93	220.00	4.66	9.33	N58°30'59"W	02°25'44"
C18	29.18	450.00	15.12	28.67	N71°49'03"W	37°09'04"
C19	41.79	450.00	22.54	40.30	N26°38'24"W	53°12'14"

LINE	LENGTH	BEARING
L1	228.63	N28°13'59"W
L2	146.26	S57°31'05"W
L3	19.48	N62°31'58"W
L4	71.54	S57°31'05"W
L5	80.41	N81°11'27"E
L6	25.96	N69°28'49"E
L7	218.05	N29°16'45"E
L8	139.46	S00°06'04"W
L9	184.19	S78°36'50"W
L10	53.20	N59°55'08"W
L11	185.71	S24°53'02"W
L12	140.06	S59°43'32"E
L13	88.5	N00°23'35"W
L14	23.65	N29°16'45"E

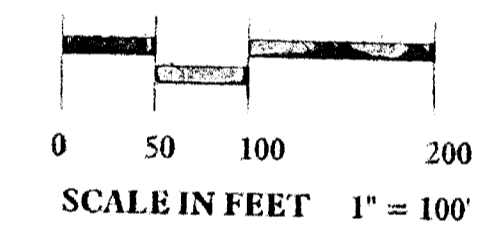
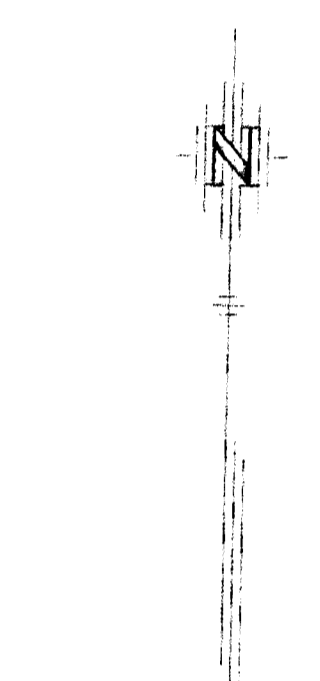
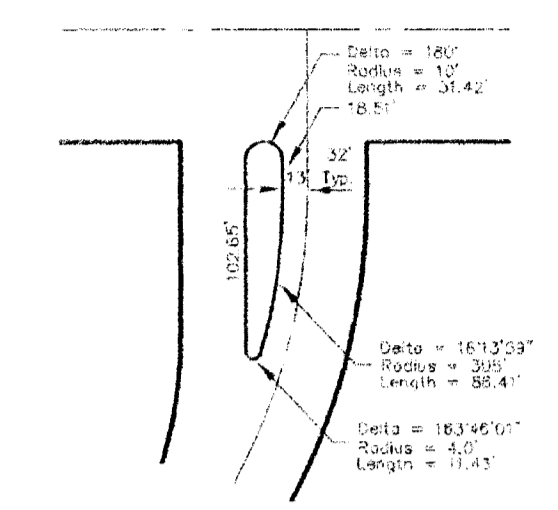
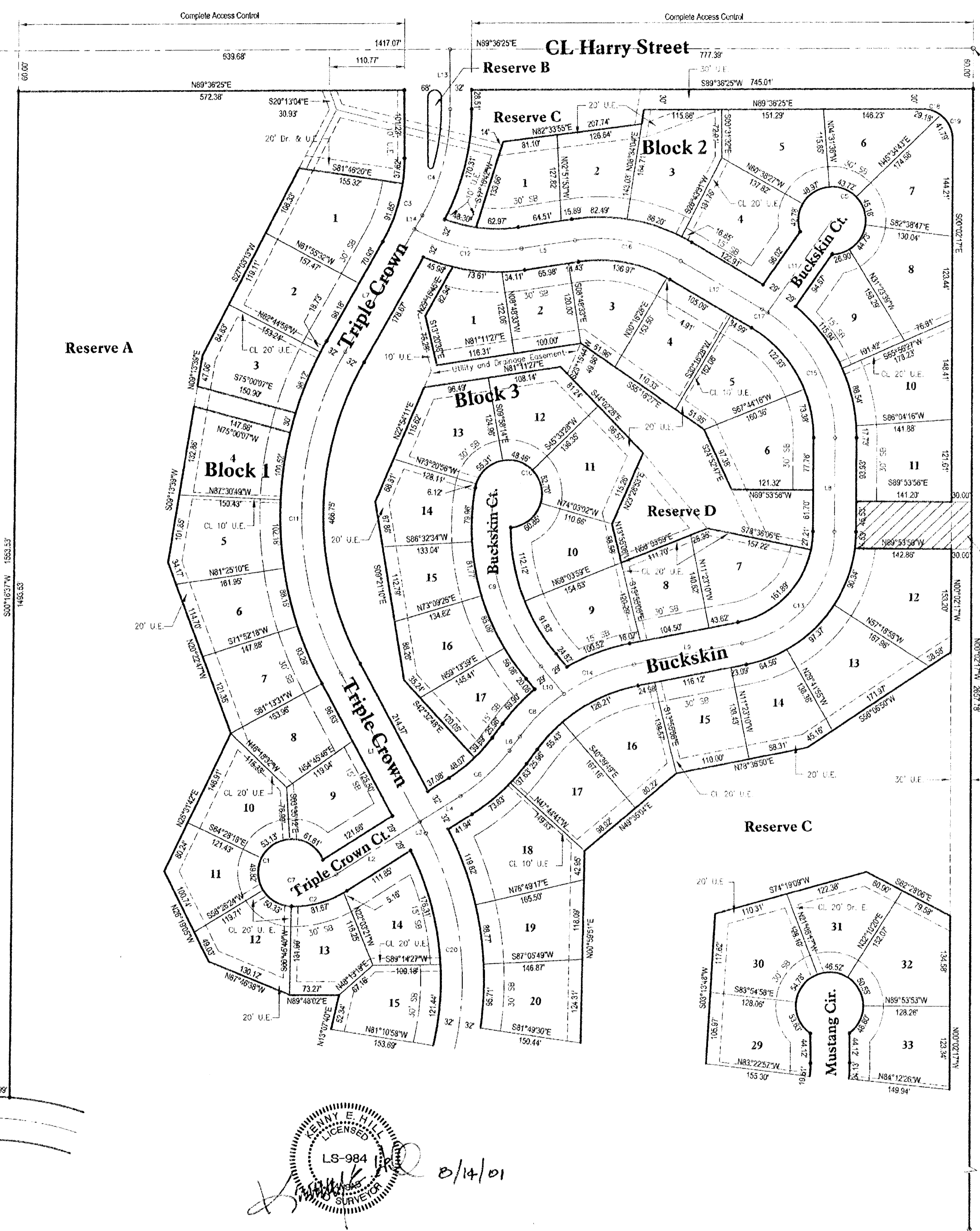
Exception to Plat

Location	NGVD Datum	City Datum
Lot 1-5, Bk 1	1216.0	128.6
Lot 6-9, Bk 1	1227.3	139.9
Lot 12-32, Bk 2	1208.4	139.0
Lot 1-9, Bk 6	1305.0	147.6
Lot 10, Bk 5	1335.0	147.6
Lot 21-25, Bk 5	1355.0	147.6



EQUESTRIAN ESTATES

An Addition to Wichita - Sedgwick County, Kansas
(Associated Zone Case PUD 2000-0001)



LEGEND

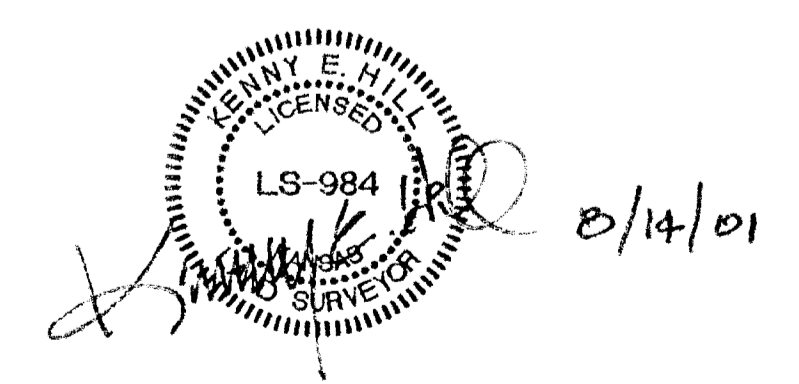
- Utility Easement 70' U.E.
- Drainage Easement 20' Dr. E.
- Iron Set ————
- Building Setback 30' SB
- Curve Label c2
- Line Label 12
- Center Line CL
- Monument Found ————

NOTE:

This Addition is subject to the conditions of the Planned Unit Development PUD 2000-0001.

BENCHMARKS:

- NGVD Datum
- 1. Railroad spike in power pole, approximately 25' south and 30' east of W 1/4 Corner, Section 35-27-2E. Elevation 1349.65
- 2. Square on south hub guard of RCBC just west of NW Corner of Section 35-27-2E. Elevation 1311.90



SE Corner, NW 1/4 Section 35-27-2E Found 1/4" Gas Pipe