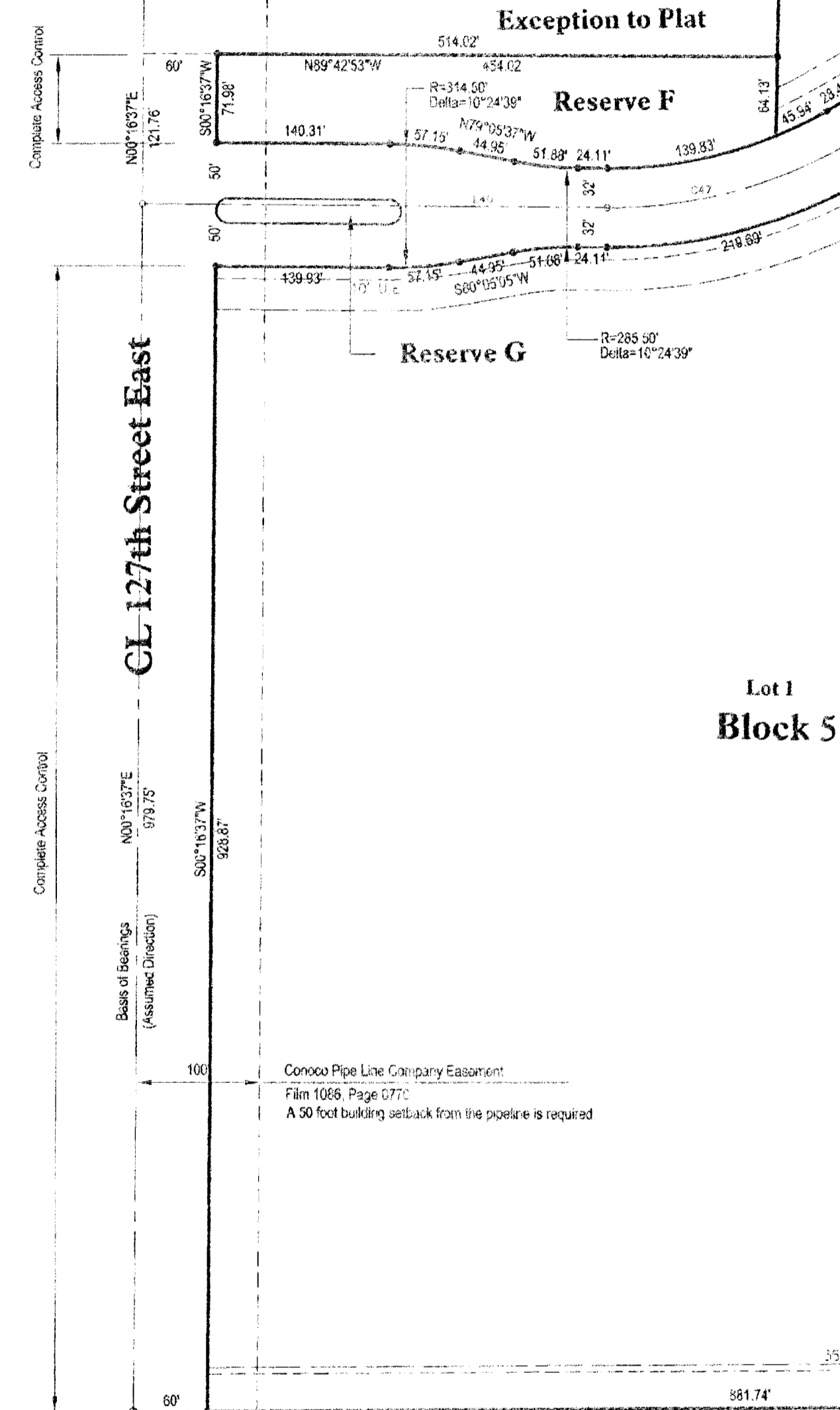
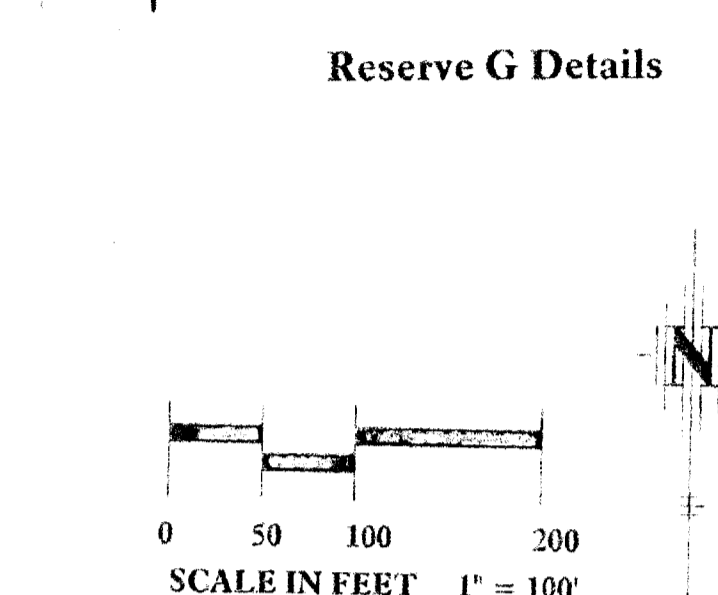
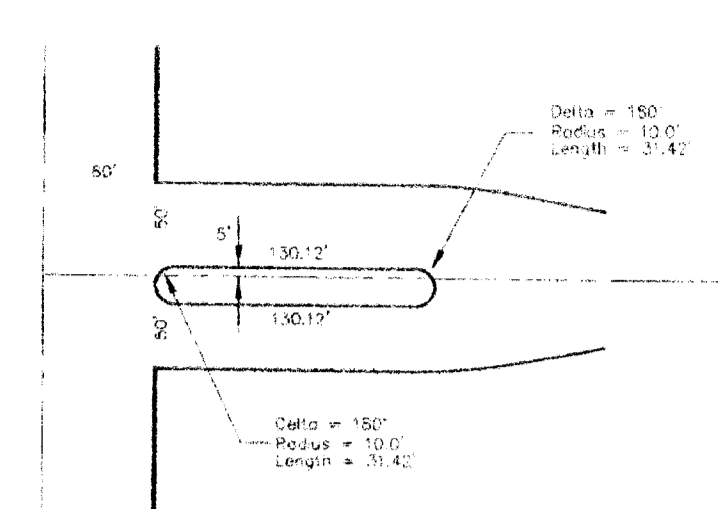
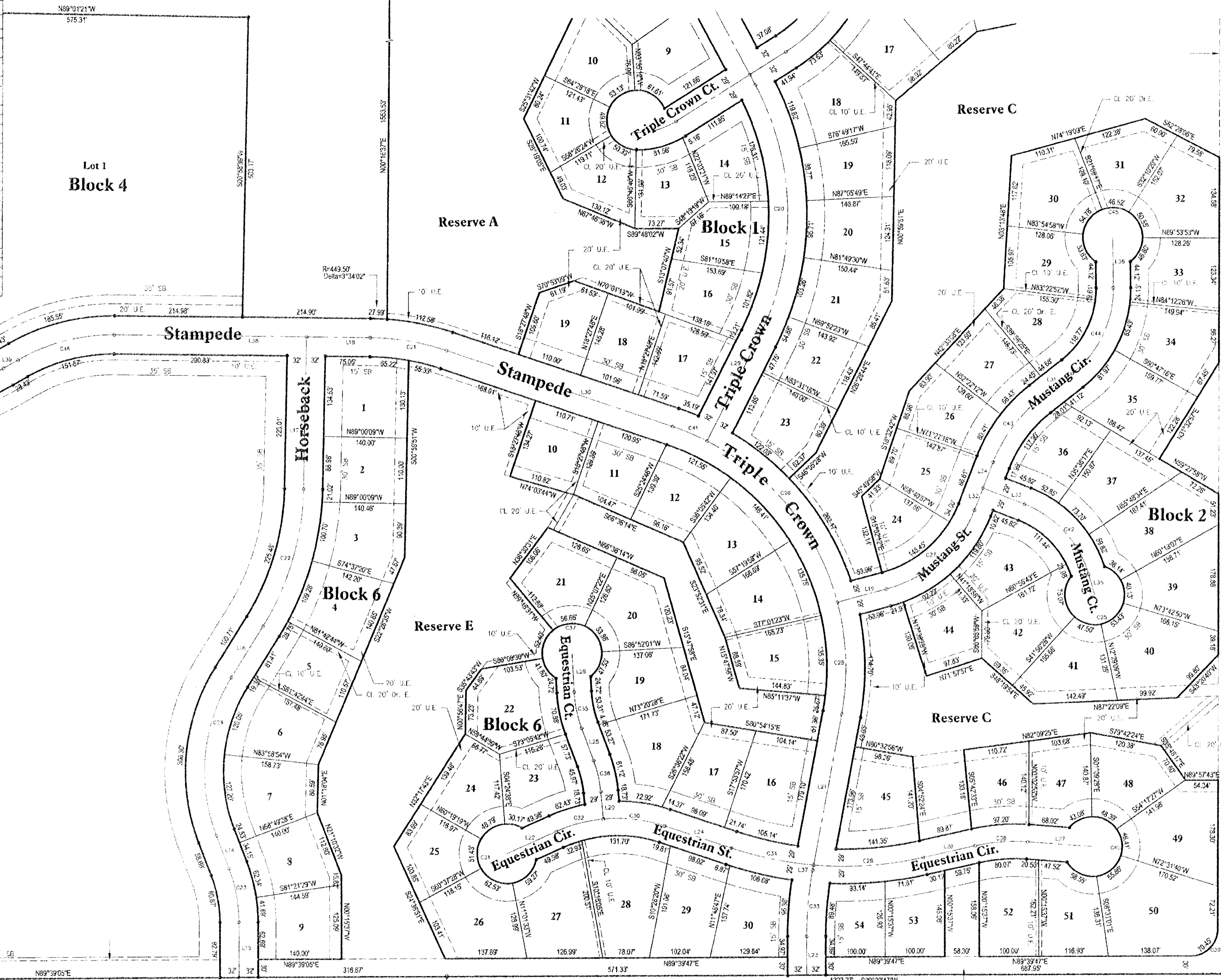


CURVE	LENGTH	RADIUS	TANGENT	CHORD	BEARING	DELTA
C20	442.73	483.00	236.54	423.51	S89°52'37"E	54°42'42"
C21	133.56	417.50	65.31	133.02	N80°24'42"W	17°50'51"
C22	242.82	483.00	124.20	239.73	N16°29'12"E	30°41'14"
C23	92.35	283.30	49.70	91.84	N10°43'04"W	20°54'55"
C24	276.77	300.00	143.37	267.36	S65°15'10"W	52°51'30"
C25	252.26	50.00	25.00	50.00	N73°25'49"E	259°54'24"
C26	358.23	427.00	199.42	341.82	N83°09'04"W	48°04'01"
C27	206.70	220.00	111.59	199.18	N48°12'01"E	53°49'56"
C28	189.51	427.00	36.34	187.96	N02°20'56"W	25°22'49"
C29	185.42	600.00	90.48	184.89	N85°16'51"E	17°42'24"
C30	104.25	250.00	42.89	103.49	N83°39'31"W	23°53'57"
C31	252.29	50.00	25.00	50.00	S24°32'32"E	259°54'24"
C32	81.58	250.00	41.55	81.61	S75°00'36"W	10°47'10"
C33	111.97	603.00	56.15	111.81	S65°59'34"W	10°38'22"
C34	141.23	600.00	70.94	140.90	S78°27'21"E	13°29'11"
C35	62.10	205.00	31.29	61.96	S11°53'01"E	17°21'22"
C36	53.55	205.00	25.13	53.39	N13°38'14"W	14°57'43"
C37	252.29	50.00	25.00	50.00	S86°47'11"W	289°05'50"
C38	88.83	300.00	44.91	88.31	S85°33'29"W	16°59'40"
C39	70.45	45.00	44.77	63.47	N44°48'15"E	89°42'04"
C40	252.29	50.00	25.00	50.00	N64°01'13"E	259°54'24"
C41	82.74	427.00	51.42	82.68	N87°19'44"W	38°25'56"
C42	194.63	190.00	89.56	194.55	N42°49'53"W	52°24'00"
C43	133.37	220.00	60.31	131.79	S36°24'01"W	30°33'51"
C44	164.95	180.00	89.78	159.24	N23°25'48"E	52°30'24"
C45	252.29	50.00	25.00	50.00	S89°12'38"W	289°05'50"
C46	168.66	317.50	69.12	168.59	N78°28'15"E	30°35'56"
C47	202.73	382.50	103.31	200.36	N75°18'43"E	30°22'02"



1/6 Corner, N89°17'41" Section 35-27-2E Found 3/4 Pole

1/6 Corner, N89°17'41" Section 35-27-2E Found 1 1/4" Galv. Pipe



LEGEND

- Utility Easement: 20' U.E.
- Drainage Easement: 20' Dr. E.
- Iron Set: ———
- Building Setback: 30' S.D.
- Curve Label: ———
- Line Label: ———
- Center Line: ———
- Monument Found: ———

NOTE:

This Addition is subject to the conditions of the Planned Unit Development PUD 2000-0001.

BENCHMARKS:

NGVD Datum

- Railroad spike in power pole, approximately 25' south and 30' east of W 1/4 Corner, Section 35-27-2E. Elevation 1349.65
- Square on south hub guard of RCBC just west of NW Corner of Section 35-27-2E. Elevation 1311.90

LINE TABLE

LINE	LENGTH	BEARING
L14	59.89	S21°12'32"E
L15	92.74	S00°15'31"E
L16	100.74	S31°44'24"W
L17	255.25	N00°59'51"E
L18	108.30	N89°27'13"W
L19	65.04	S74°55'59"W
L20	46.22	N85°35'15"W
L21	297.23	S10°24'45"W
L22	90.71	N65°36'23"E
L23	84.93	N00°15'31"W
L24	117.83	S71°42'46"E
L25	57.73	N03°34'12"W
L26	65.45	N83°12'26"W
L27	108.75	S85°58'41"E
L28	89.87	N77°03'49"E
L29	192.27	N26°28'44"E
L30	399.87	S71°32'12"E
L31	68.13	N81°44'00"E
L32	39.92	S21°00'30"W
L33	74.82	N88°52'57"W
L34	48.39	S21°07'05"W
L35	35.39	N16°28'46"W
L36	84.05	S00°49'24"E
L37	8.74	S10°22'45"W
L38	323.08	N89°27'15"W
L39	28.43	S60°07'42"W
L40	378.06	N29°30'16"W

MINIMUM BUILDING ELEVATIONS

Location	NGVD Datum	City Datum
Lots 1-5, Blk 1	1319.0	1318.5
Lots 6-19, Blk 1	1327.3	1319.0
Lots 10-32, Blk 2	1328.4	1330.0
Lots 1-9, Blk 6	1335.0	147.6
Lot 10, Blk 6	1335.0	147.6
Lots 21-26, Blk 6	1335.0	147.6

EQUESTRIAN ESTATES

An Addition to Wichita - Sedgwick County, Kansas
(Associated Zone Case PUD 2000-0001)

