

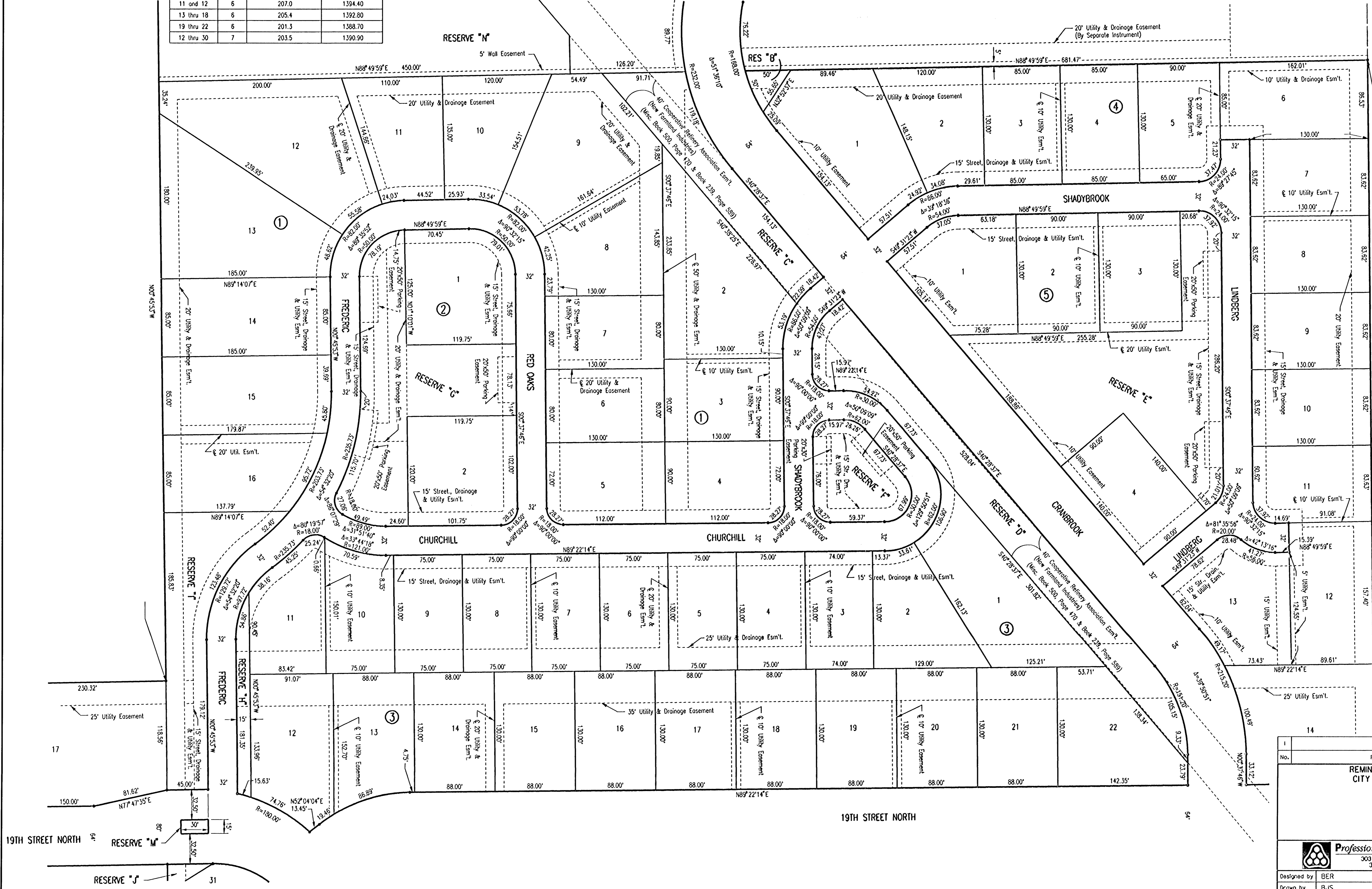
# REMINGTON PLACE

AN ADDITION TO WICHITA, SEDGWICK COUNTY, KANSAS

PROJECT NO. 472-76-245-83375-000-001	SHEET NO. 3	TOTAL SHEETS 58
---	----------------	--------------------

MINIMUM PAD ELEVATION (LOWEST OPENING)			
LOT NUMBERS	BLOCK	ELEVATION (CITY DATUM)	ELEVATION (N.G.V.D.)
9 thru 14	1	205.7	1393.10
5 and 6	4	198.4	1385.8
1 thru 4	5	209.7	1397.10
11 and 12	6	207.0	1394.40
13 thru 18	6	205.4	1392.80
19 thru 22	6	201.3	1388.70
12 thru 30	7	203.5	1390.90

• = 3/4" IRON PIPE W/PEC CAP UNLESS OTHERWISE NOTED



SCALE: 1" = 50'

DSNR: RHM OPER: CLM SCALE: 1"=50'  
 1/2001/01159/FINAL1.DGN Plot Date: 8-30-2001

Revisions No. _____ By _____ Date _____	
<b>REMINGTON PLACE-PHASE I</b> CITY OF WICHITA, KANSAS	
<b>PLAT</b>	
<b>Professional Engineering Consultants, P.A.</b> 303 S. TOPEKA • WICHITA, KANSAS 67202 316-262-2691 • FAX 316-262-3003	
Designed by BER Drawn by BJS	Checked by _____ Date JUNE 2001 Job No. 01158