

SANITARY & STORM SEWER TO SERVE DAVIS MOORE MAZDA

1762 PPS(607861)

CITY OF WICHITA, KANSAS
Jim Armour, P.E., City Engineer

Index of Sheets:

1. Title Sheet
- 2.-4. Sanitary Sewer Plan and Profile
- 5.-7. Storm Sewer Plan and Profile
8. Type P Manhole
9. Type 1-A Inlet Detail
10. Plat
11. Pond

GENERAL NOTES

1. Contractor will be required to provide notice to utility companies a minimum of twenty-four (24) hours prior to any excavation, as follows:

Kansas One-Call 687-2470

The Contractor must notify the following in case of an emergency:

- | | |
|-------------------------------------|----------------|
| Cox Communications | 262-4270 |
| or | 263-2061 |
| Westar Energy/ | |
| Kansas Gas & Electric Company | 1-888-482-4950 |
| Southwestern Bell Telephone Company | 1-571-2611 |
| City of Wichita Water Department | 268-4908 |
| City of Wichita Sewer Department | 268-4071 |
| Aquila Natural Gas | 942-8811 |
| or | 1-800-303-0357 |

2. Exist. utilities and their locations, as shown on the plans, represent the best information obtainable for design. Location information has been obtained from the various utility companies and is either from company record drawings or company-provided field locations. The Contractor will be required to work around existing utilities which do not conflict with proposed construction.

3. The Contractor to verify utility locations prior to construction of this project.

4. Utility service and installation shall be coordinated with the respective utility owners. Contacts are:

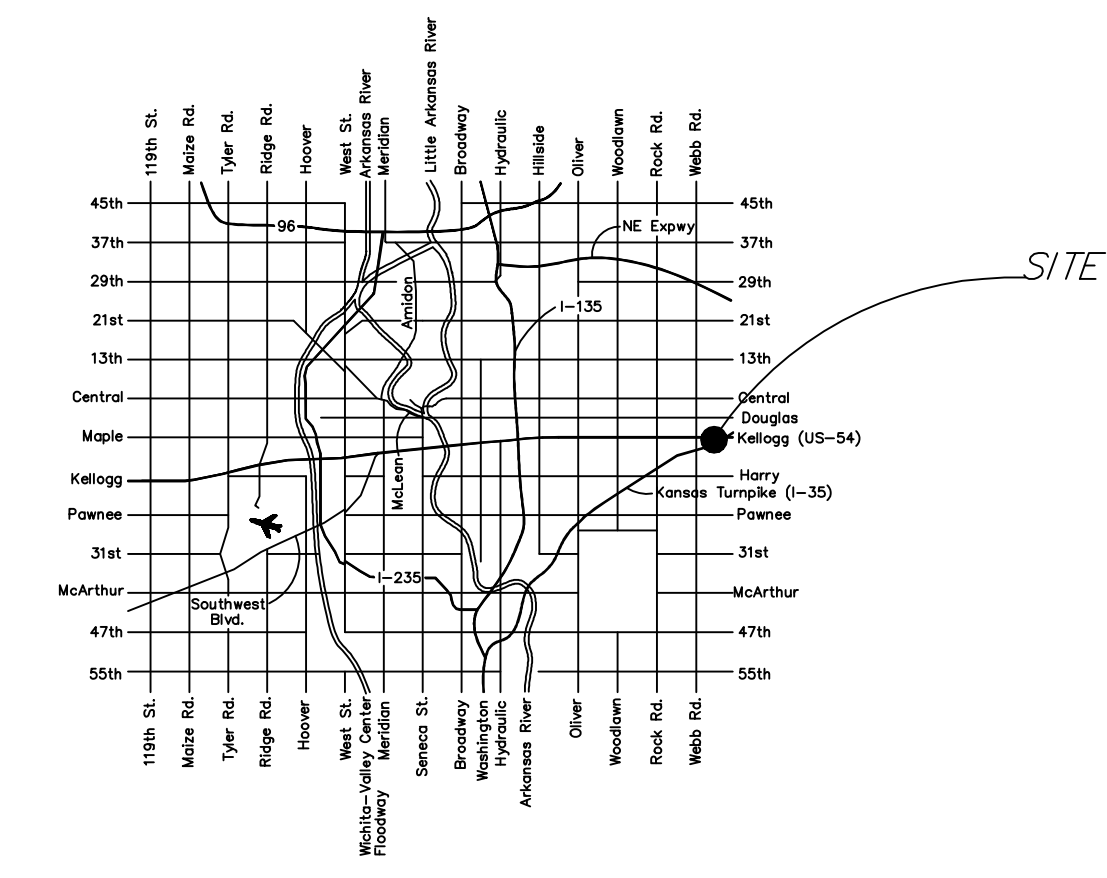
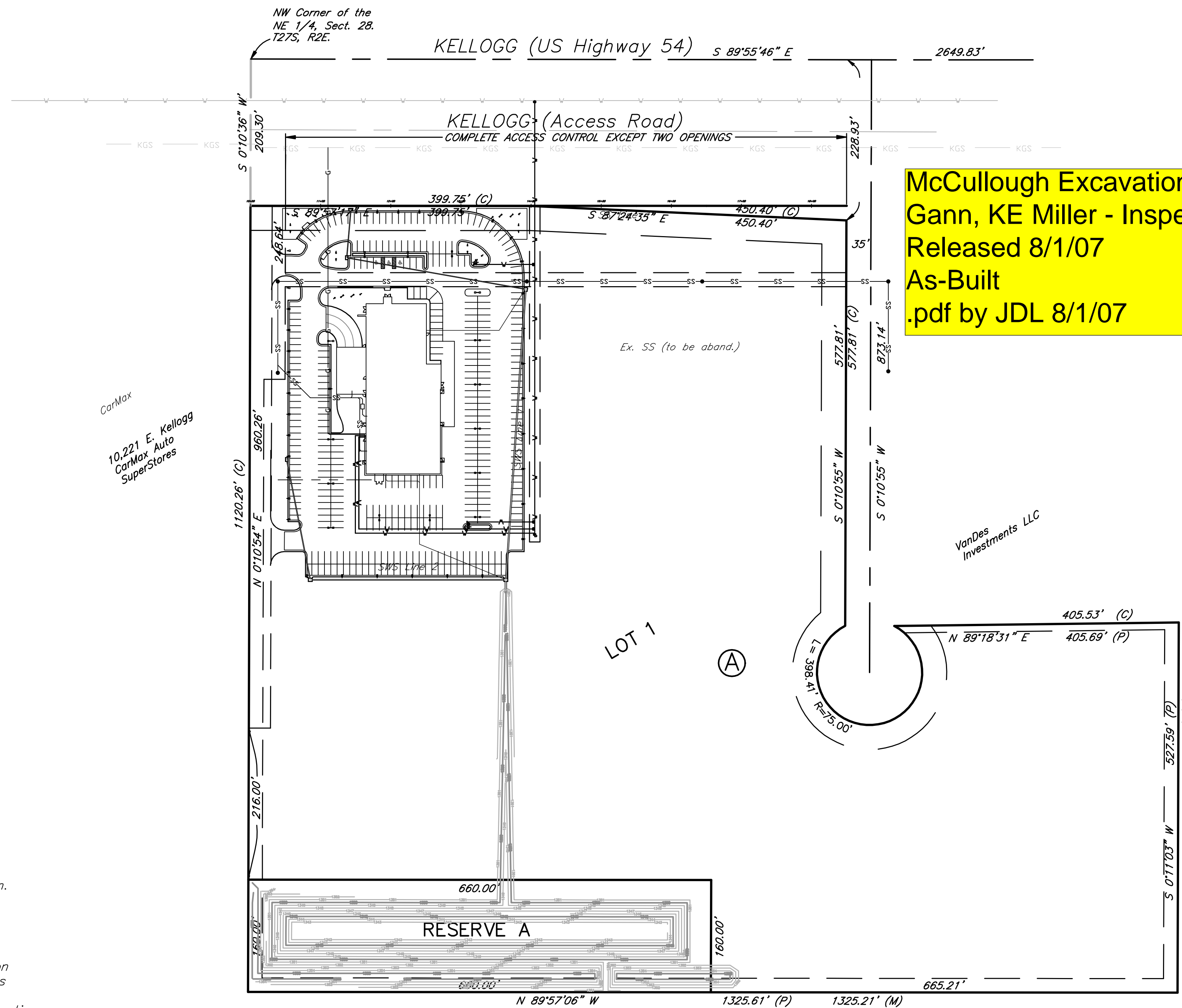
- | | | |
|--------------------|---------------|----------|
| Kansas Gas Service | Charlene Pint | 832-3121 |
| Westar Energy | Miles Capps | 261-6251 |
| Aquila Networks | Calvin Briggs | 942-8811 |
| Wichita Water | Paul Bryant | 268-4555 |
| Southwestern Bell | Jim Toben | 268-2759 |
| Cox Communications | Brian Ring | 262-4270 |

5. All lawn/turf areas disturbed by construction of proposed improvements shall be restored with seed. All seeding work shall be in accordance with the City of Wichita standard specifications and the City of Wichita administrative regulation No. AR78 which governs cleanup and replacement following construction. All costs for this work shall be subsidiary to the lump sum price bid for "Site Restoration."

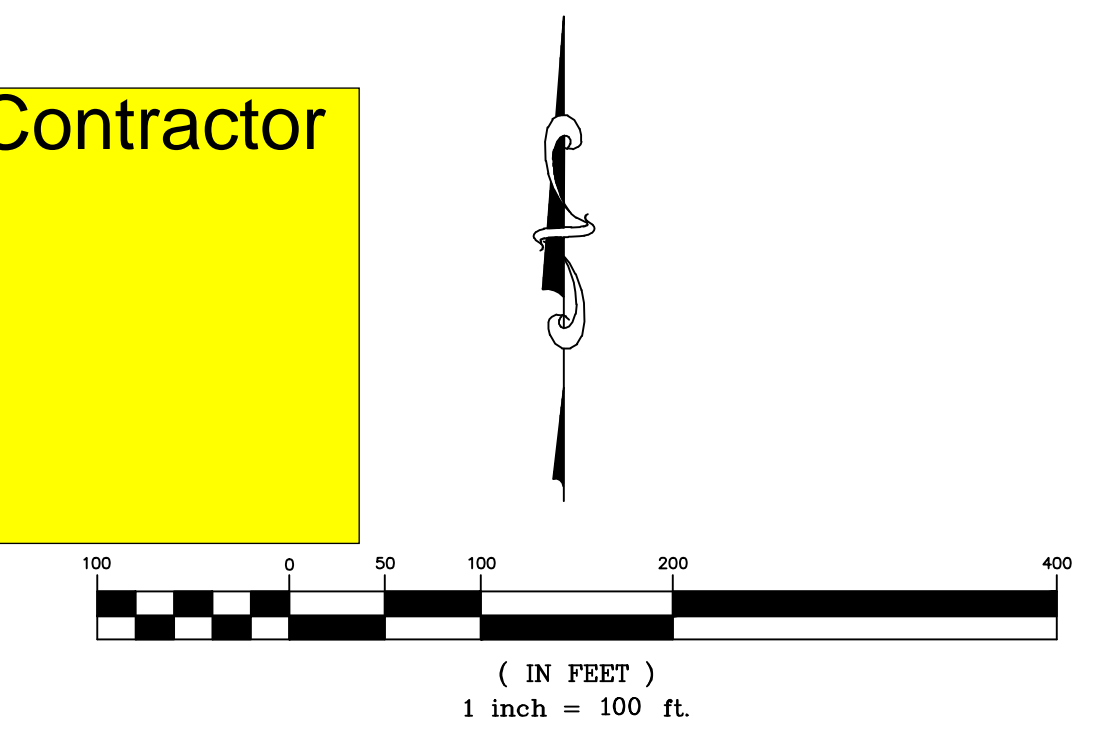
6. Traffic affected by the construction of this project shall be handled in accordance with the latest edition of the Manual on Uniform Traffic Control Devices.

7. All commercial signs to be moved by others prior to construction.

8. Properties within the project may have underground irrigation systems (lawn sprinklers) which conflict with new construction. Contractor shall remove such components as needed during construction of the project. The irrigation system shall be reinstalled in like kind before project completion. Any irrigation system modifications required because of project improvements shall be coordinated with the property owner. Portions of underground irrigation systems not in conflict with new construction shall be protected from damage and shall remain in place. All work related to underground irrigations/sprinklers shall be subsidiary to Site Restoration.



City of Wichita



APPROVED AS NOTED

City Engineer Office _____

NOTE TO CONTRACTORS

Installation, inspection and testing for this project is to be provided by a Licensed Consulting Engineering Firm under contract with the Owner/Developer. Said inspection to be in accordance with the City of Wichita standard construction engineering practices and certified by a Licensed Professional Engineer. No work shall be performed in dedicated easements or public right-of-way by the Contractor without such inspection nor shall any work be commenced without written authorization by the City Engineer. All Construction and Materials shall comply with the City of Wichita Specifications and Standards (on file and available in the City Engineer's Office).

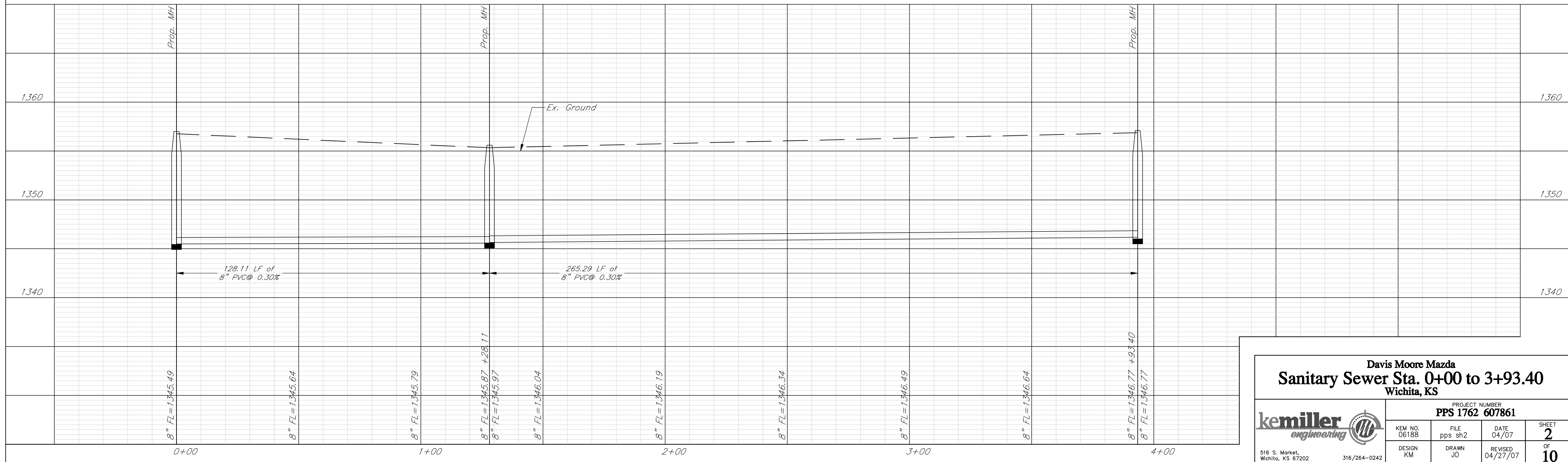
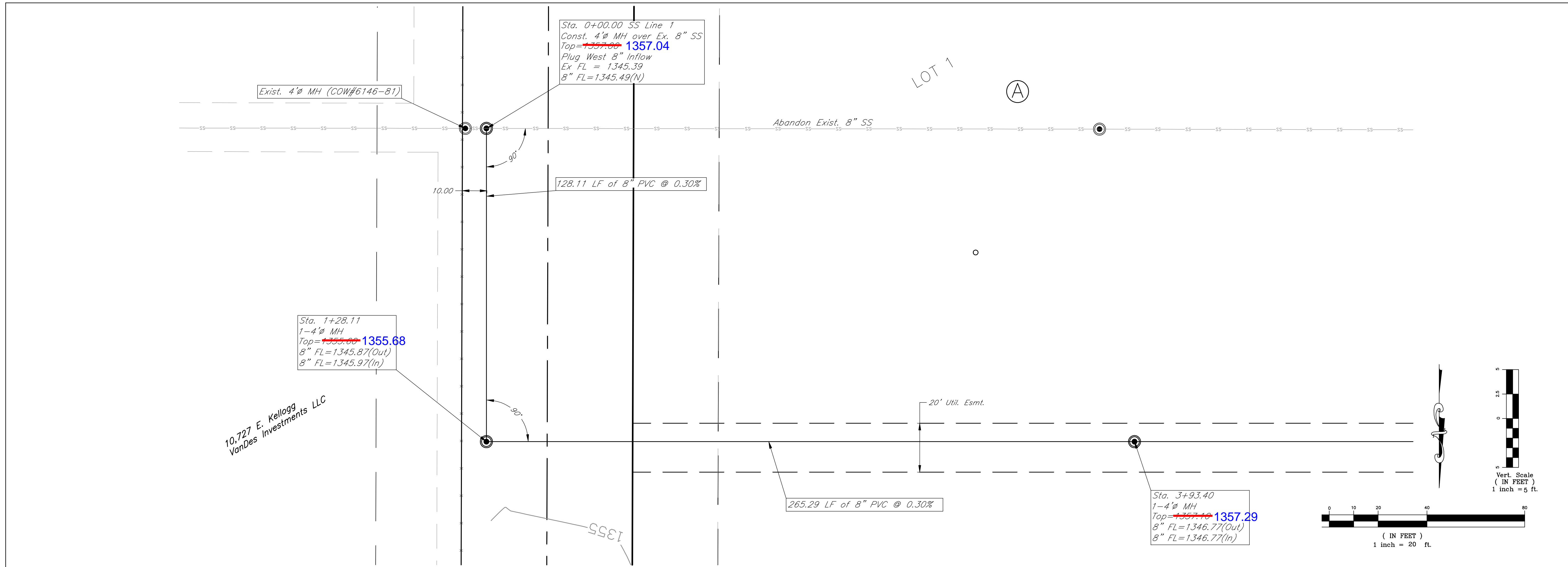
Benchmark:
"±" cut N. top of curb,
N. median of access Road.
Elev. 1,360.60

kemiller
engineering

516 S. Market,
Wichita, KS 67202

316/264-0242

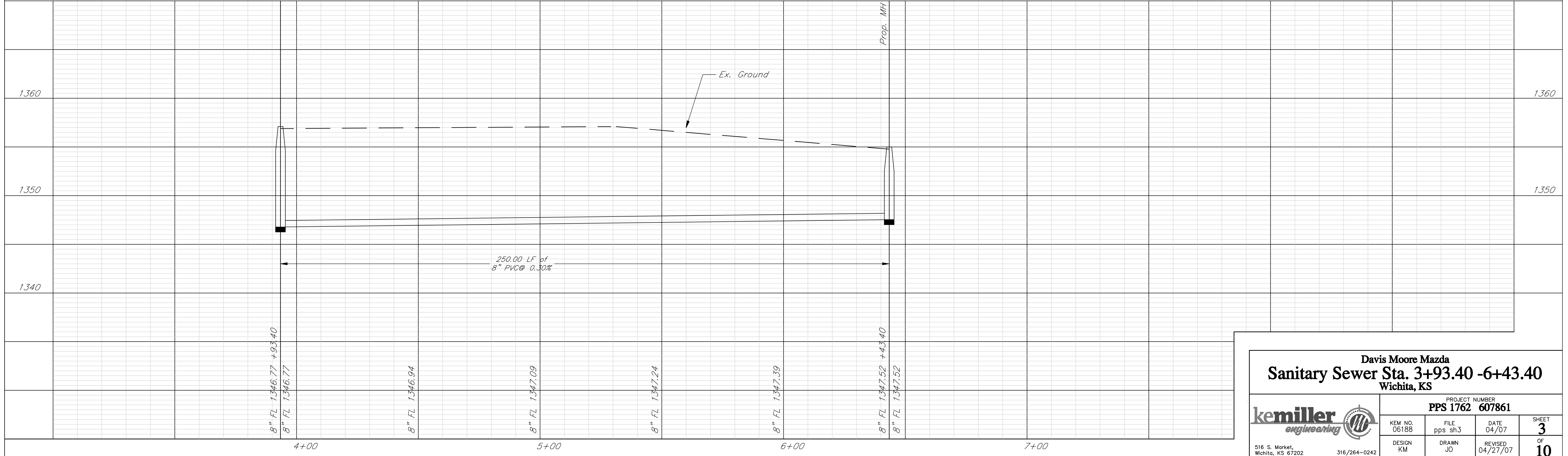
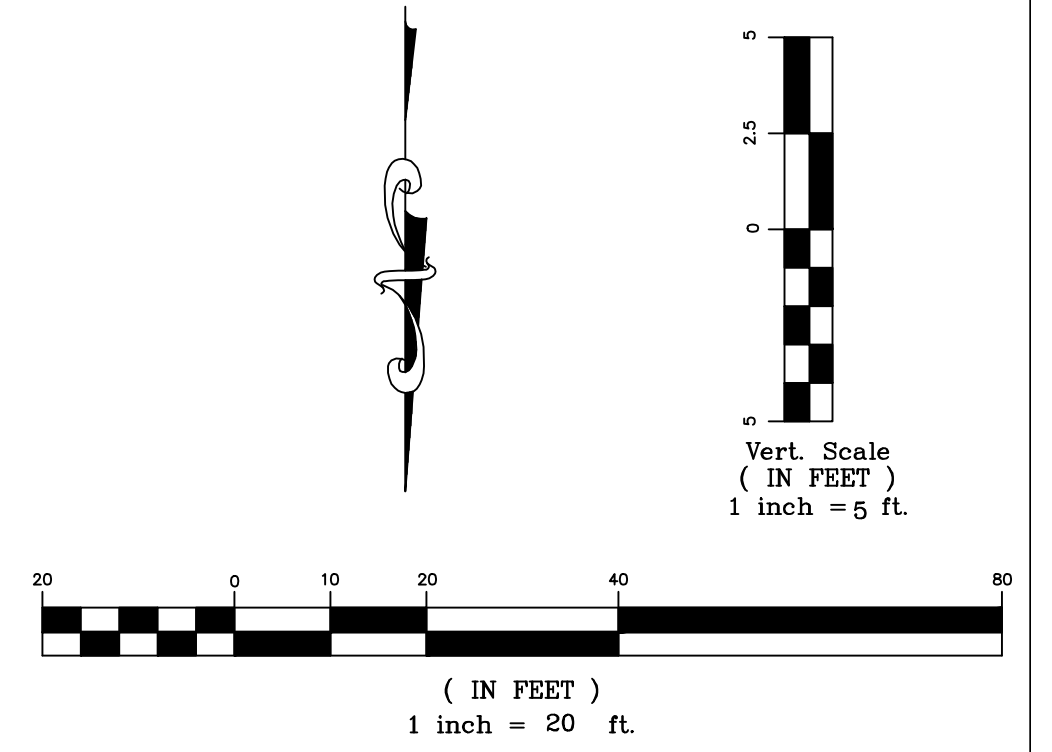
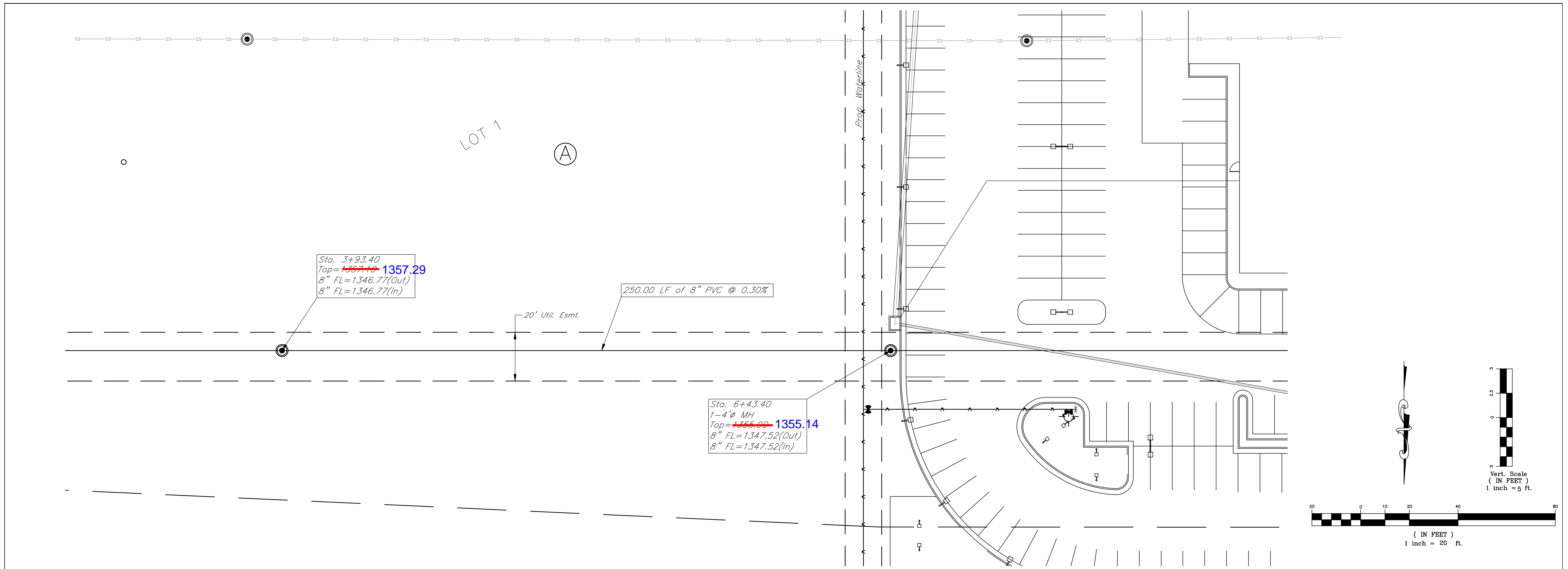
May, 2007 KANSAS TURNPIKE AUTHORITY (I-35)



Davis Moore Mazda
Sanitary Sewer Sta. 0+00 to 3+93.40
Wichita, KS

kemiller engineering	PROJECT NUMBER PPS 1762 607861			SHEET 2
	KEM NO. 06188	FILE pps sh2	DATE 04/07	OF 10
DESIGN KM	DRAWN JO	REVISED 04/27/07		

516 S. Market, Wichita, KS 67202 316/264-0242

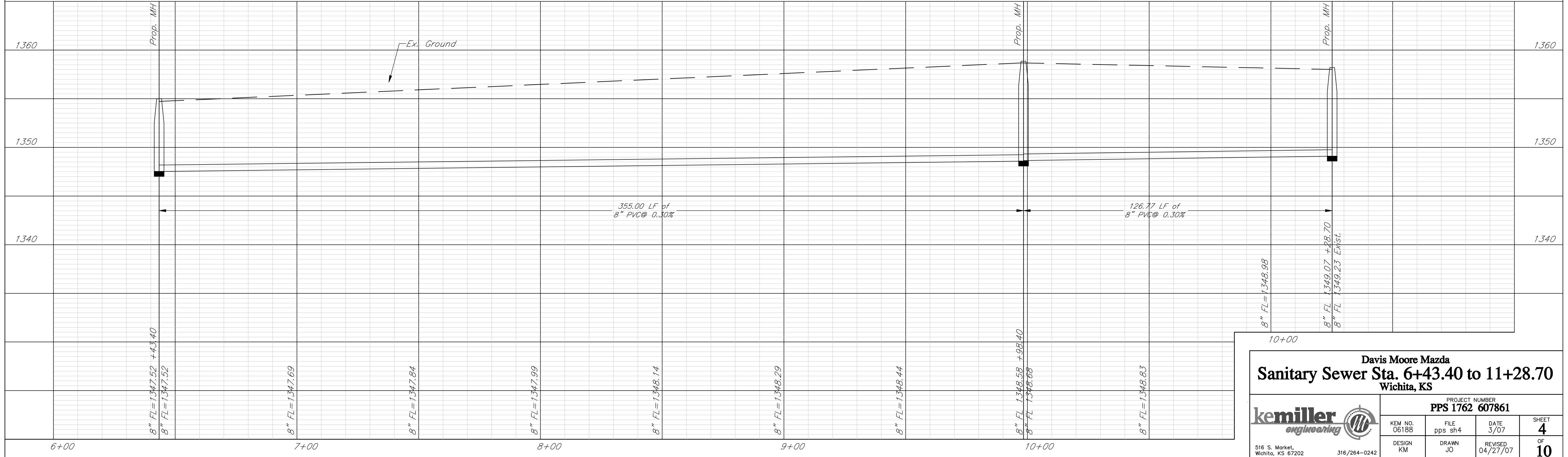
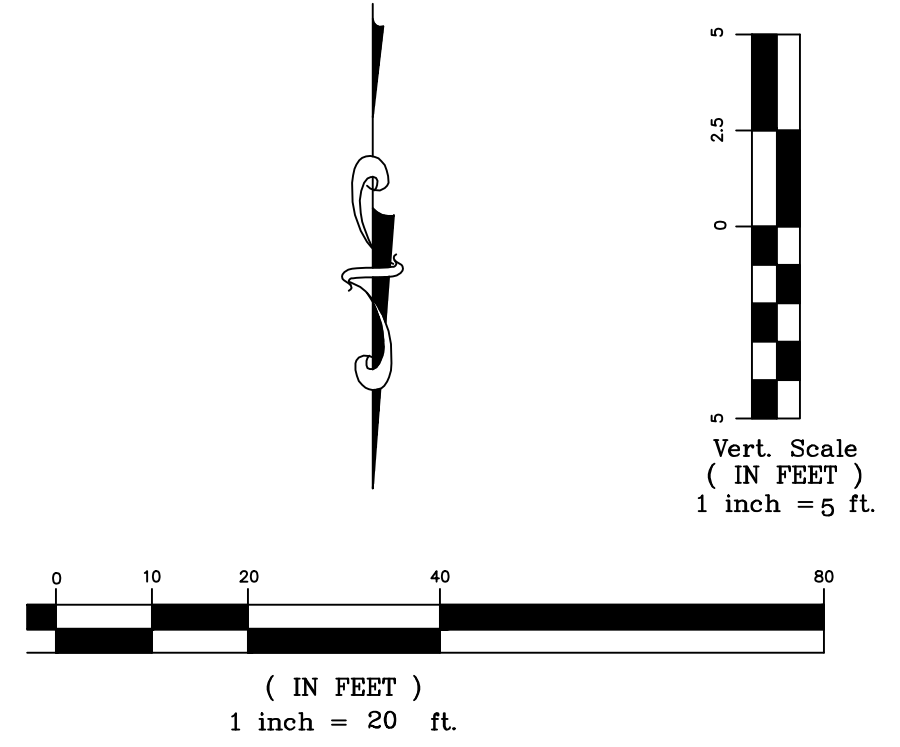
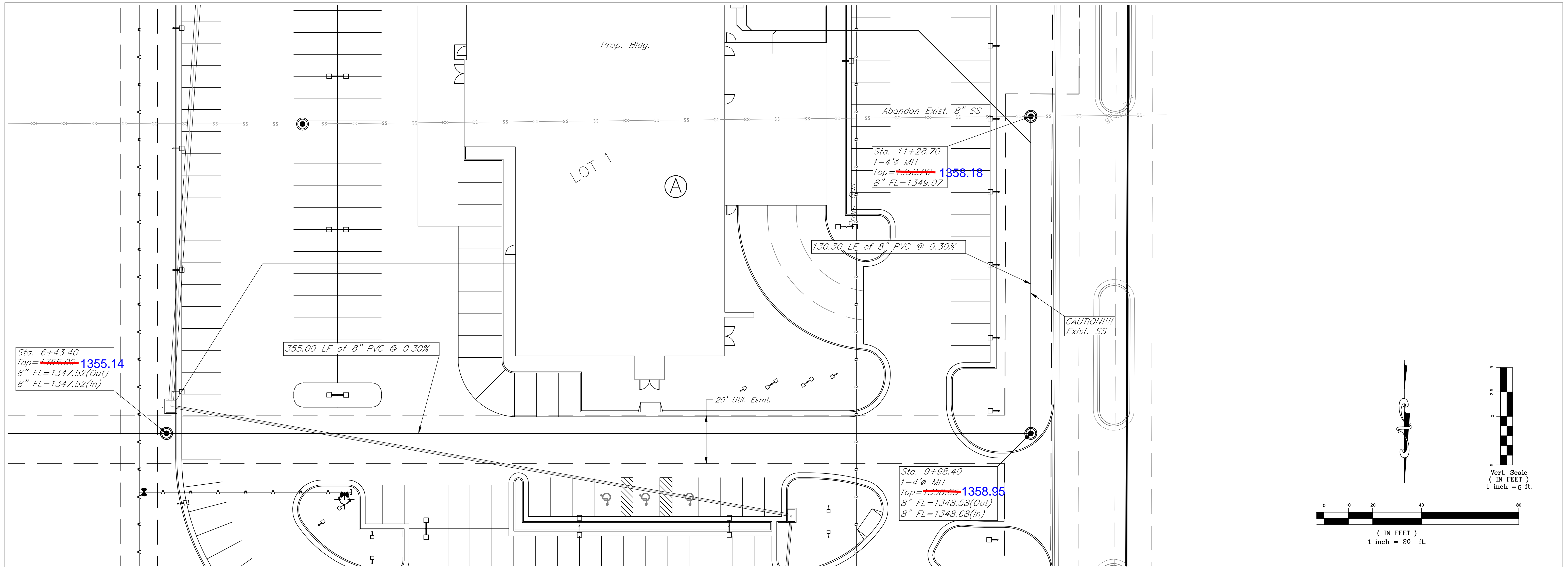


Davis Moore Mazda
Sanitary Sewer Sta. 3+93.40 -6+43.40
 Wichita, KS

	PROJECT NUMBER PPS 1762 607861			SHEET 3 OF 10
	KEM NO. 06186	FILE pps sh3	DATE 04/07	
DESIGN KM	DRAWN JO	REVISED 04/27/07		

516 S. Market,
Wichita, KS 67202

316/264-0242



Davis Moore Mazda
Sanitary Sewer Sta. 6+43.40 to 11+28.70
 Wichita, KS

PROJECT NUMBER
PPS 1762 607861

	KEM NO. 06188	FILE pps sh4	DATE 3/07	SHEET 4
	DESIGN KM	DRAWN JO	REVISED 04/27/07	OF 10

516 S. Market, Wichita, KS 67202 | 316/264-0242