

# FINAL PLAT

## ROCKY CREEK SECOND ADDITION

AN ADDITION TO SEDGWICK COUNTY, KANSAS

LIBRARY COPY  
SEDGWICK COUNTY, KANSAS  
OFFICE OF THE  
CLERK OF COURTS  
LARRY CONSLIVER

I, Gregory J. Allison, a Civil Engineer and Registered Land Surveyor in Kansas, do hereby certify that I have been in responsible charge of surveying and platting of "ROCKY CREEK SECOND ADDITION", an addition to Sedgwick County, Kansas, into lots, blocks, streets, and reserves the same being accurately set forth in the accompanying plat and described herein:

This plat of "ROCKY CREEK ADDITION", has been submitted to and approved by the Wichita-Sedgwick County Metropolitan Area Planning Commission, Wichita, Kansas.

Dated this 11<sup>th</sup> day of September, 1997.

WICHITA-SEDGWICK COUNTY METROPOLITAN PLANNING COMMISSION

John C. Frye, Chairman  
Marvin S. Krout, Secretary

This plat approved and all dedications shown thereon, if any, accepted by the Board of Commissioners of the City of Wichita, Kansas, this 29<sup>th</sup> day of February, 1998.

Bob Kneifer, City Clerk

Pat Burnett, City Clerk

James Alford, County Clerk

Entered on transfer record this 2<sup>th</sup> day of March, 1998.

Attest: James Alford, County Clerk

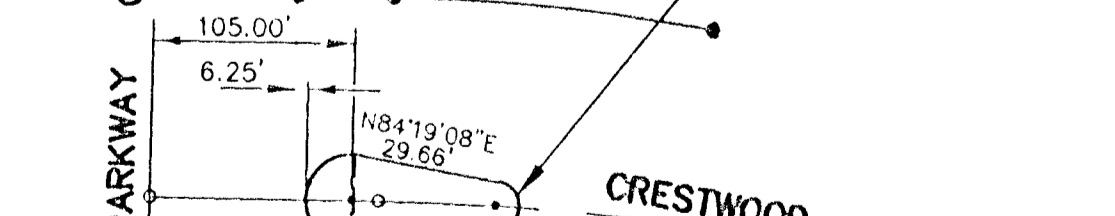
STATE OF KANSAS ) ss:  
SEDGWICK COUNTY )

This is to certify that this instrument was filed for record in the Register of Deeds office this 12<sup>th</sup> day of March, 1998.

Larry Consliver, Register of Deeds

Michael D. Hurtt, Deputy

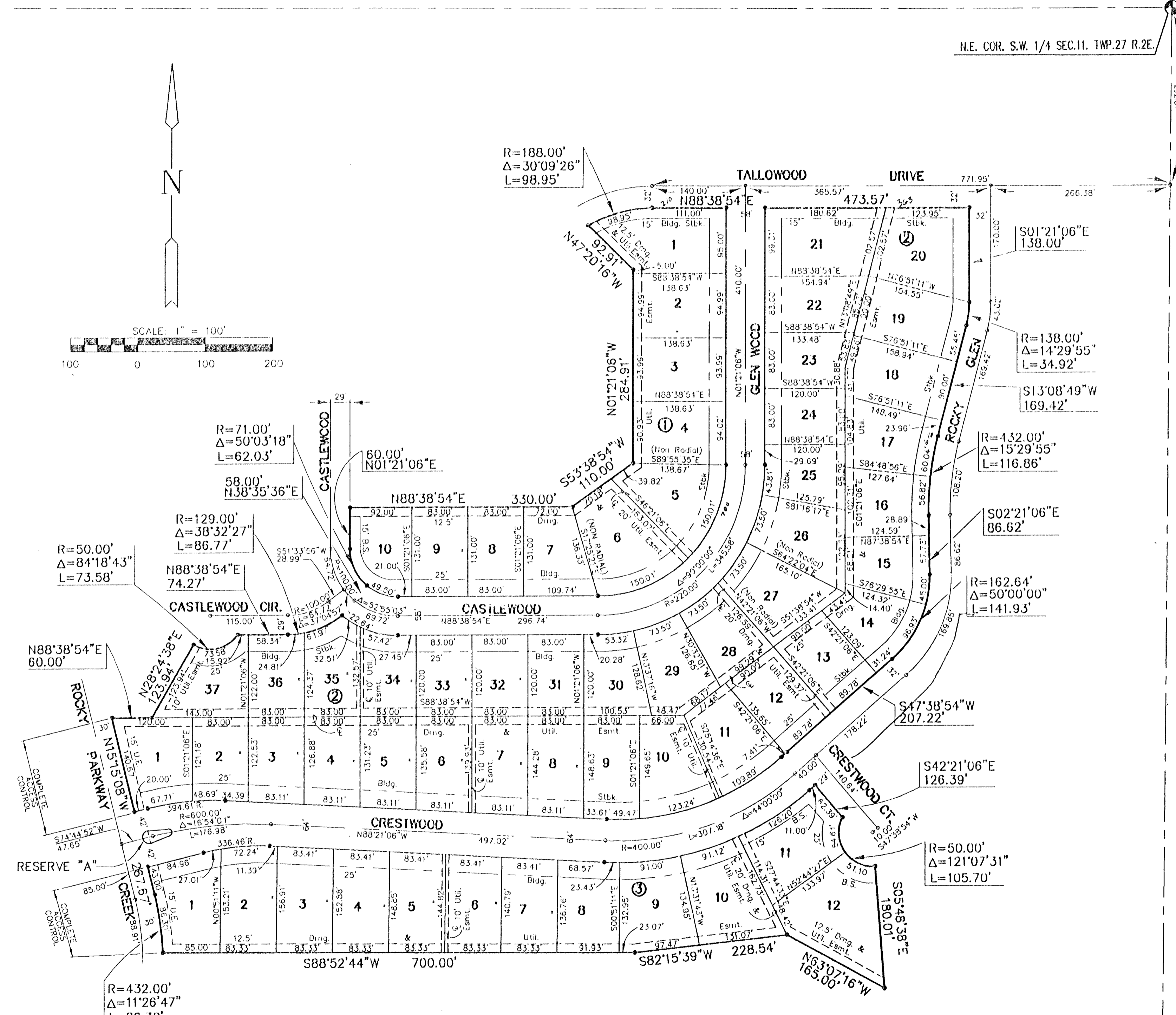
Michael D. Hurtt, Deputy



RESERVE "A"

11-00-03-05

PC 83-7



LEGEND  
• = I.P.  
B.S. = BUILDING SETBACK

Replat of Lots 32-44 Block 6, Lots 8-45 Block 8, Lots 8-18 Block 9, and Reserve "A" "ROCKY CREEK ADDITION" an addition to Sedgwick County, Kansas.

All lots, blocks, streets, easements, reserves, access control, and building setback located within the above described tract are hereby vacated by virtue of K.S.A. 512(b)

I hereby certify that the details of this plat are correct to the best of my knowledge and belief this 16<sup>th</sup> day of December, 1997.

Gregory J. Allison, P.E., R.L.S. # 1257  
Mid-Kansas Engineering Consultants, Inc.  
411 North Webb Road  
Wichita, KS 67206

Know all men by these presents that we the undersigned property owners of the land as above set forth in the Civil Engineer's and Registered Land Surveyor's Certificate, have caused the same to be surveyed and platted into lots, blocks, streets, and reserves the same to be known as "ROCKY CREEK SECOND ADDITION", an addition to Sedgwick County, Kansas. The streets are dedicated to and for the use of public. Easements for the construction and maintenance of public utilities and drainage, are hereby granted to the public. Reserve A is platted for lighting, landscaping, open space, irrigation, and entry monuments. The Reserve shall be owned and maintained by the homeowners association. All egress right of access to or from Rocky Creek Parkway over and across the West line of lines of Lot 1, Block 3, Lot 1, Block 2, are hereby granted to the public.

Ritchie Development Corporation  
Ritchie Associates, Inc.  
Kevin M. Mullen, President

STATE OF KANSAS ) ss:  
SEDGWICK COUNTY )

BE IT REMEMBERED, that on this 16<sup>th</sup> day of December, 1997, before me the undersigned, a Notary Public in and for the County and State aforesaid, came Kevin M. Mullen, President of Ritchie Development Corporation and Ritchie Associates, Inc., to me personally known to be the same person who executed the foregoing instrument of writing and duly acknowledged the execution of the same.

IN WITNESS WHEREOF, I have hereunto set my hand and affixed my official seal, the day and year last above written.

Karen L. Peterson, Notary Public, Karen L. Peterson

My appointment expires: 6/10/98

We, the Intrust Bank, N.A., mortgagees on the above described property, do hereby consent to the plat of "ROCKY CREEK SECOND ADDITION".

INTRUST BANK, N.A.

By: Gary D. Schmitt, Senior VP  
Gary D. Schmitt, Senior VP

STATE OF KANSAS ) ss:  
SEDGWICK COUNTY )

BE IT REMEMBERED, that on this 16<sup>th</sup> day of December, 1997, before me the undersigned, a Notary Public in and for the County and State aforesaid, came Gary D. Schmitt, SVP, to me personally known to be the same person who executed the foregoing instrument of writing and duly acknowledged the execution of the same.

IN WITNESS WHEREOF, I have hereunto set my hand and affixed my official seal, the day and year last above written.

Karen L. Peterson, Notary Public, Karen L. Peterson

My appointment expires: 6/10/98

#1673424