

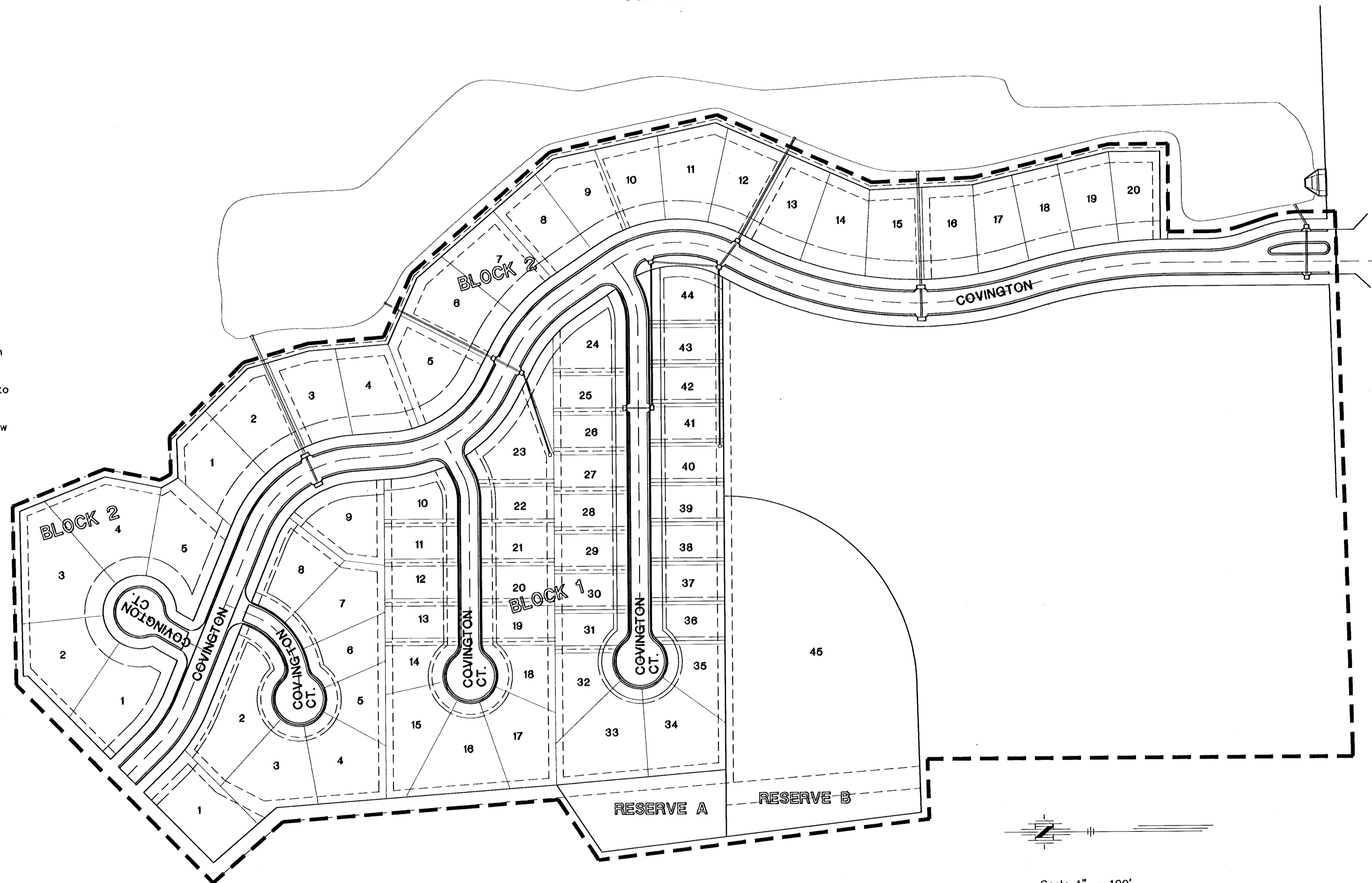
**CONSTRUCTION PLANS FOR STREET AND DRAINAGE IMPROVEMENTS
THE LOCHS AT ABERDEEN
(ALSO INCLUDES LOTS 1 THROUGH 5, BLOCK 2 OF ABERDEEN 3RD ADDITION)**

**TO
THE CITY OF WICHITA, KANSAS
PROJECT NO. 1656B**

MICHAEL E. LINDEBAK, P.E. — CITY ENGINEER
PROJECT NO. 472-83359
OCA NO. 765681

GENERAL NOTES:

- Utility service lines, poles, valve boxes, meters and etc. are to be adjusted as necessary by others prior to construction unless the plans specifically call for their adjustment by the Contractor. Existing utilities and their location, as shown on the plans, represent the best information obtainable for design. The Contractor will be required to work around existing utilities within the right-of-way which do not conflict with proposed construction.
- A saw cut of at least one-half the depth of existing surface courses or one-fourth the depth of the existing total pavement thickness shall be provided at locations where proposed construction abuts an existing surface course or pavement for which partial removal of that surface or pavement is required. Sawn joint to facilitate removal within three (3) feet of existing joints will not be permitted and for such instances the limits of removal shall extend to the existing joint. Such saw cuts will not be paid for directly and this cost shall be considered as subsidiary to the project costs.
- Rubble from the removal of miscellaneous structures and excess excavation which is to be wasted shall be disposed of on sites to be provided by the Contractor. These sites shall be approved by the Engineer as to suitability, appearance and site location. Locations that, in the opinion of the Engineer, will leave an unsightly appearance will not be approved.
All suitable excavation shall be wasted on low lying lots within the addition before any material is disposed of off site.
All disposal sites must be approved by the Kansas Department of Health and Environment. Material either stockpiled or disposed of in a flood plain would require a Kansas State Board of Agriculture permit. Any material dumped in waters of the United States or wetlands is subject to U.S. Corps. of Engineers permitting regulations. Any material buried or stockpiled beyond approved construction limits would require additional archaeological investigations unless buried in a previously approved borrow location.
- Trees and shrubs in public right-of-way which are in direct conflict with proposed new construction shall be removed by the Contractor with the Engineer's approval. Trees and shrubs which are not in direct conflict with proposed new construction shall be saved and protected from damage.
- Limits of earthwork shall match existing ground elevations at the right-of-way line unless otherwise noted on the plans with a new finished grade elevation. When a new finished grade elevation is shown, the earthwork shall extend one foot beyond the right-of-way line and then slope up of down using permissible slopes to match the existing ground surface.
- The Contractor shall be responsible for preserving property irons. The Contractor will be required to reestablish any property irons which are damaged or destroyed by his construction operations. Such irons shall be reestablished by a licensed land surveyor in accordance with state laws.
- All transition curb paid for as Roll Type Curb.
- Trees are to be removed as needed. The cost is subsidiary to street construction costs.
- All disturbed areas within street right-of-ways shall be seeded with temporary rye grass within 14 days of disturbance at a rate of 250 lbs. per acre.
- Subdivision benchmarks will be flat survey markers, No. 8134-08 3" top diameter available at Kansas Blue Print Co., Inc. (Cost is incidental to curb construction).



INDEX

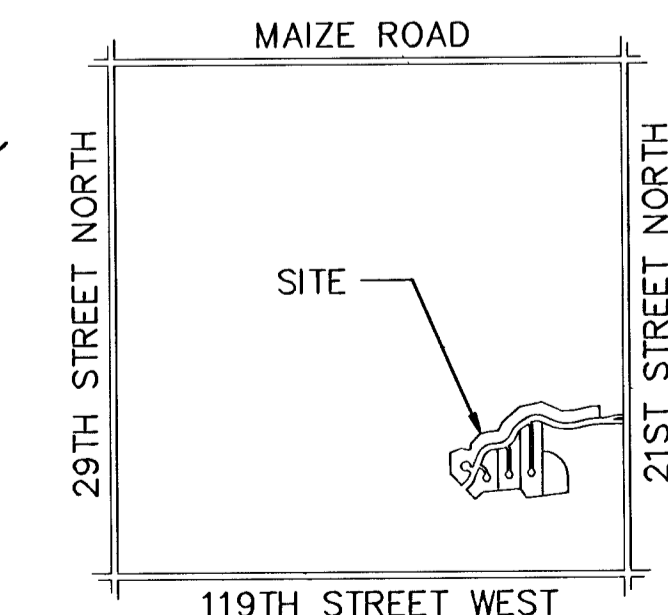
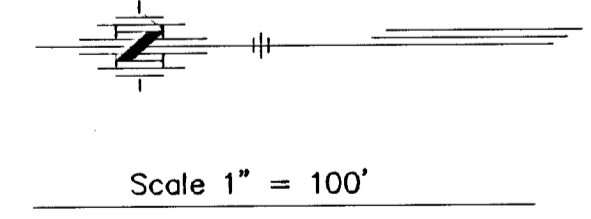
TITLE SHEET	SHEET 1
TYPICAL 29' PAVEMENT DETAILS	SHEET 2
TYPICAL 35' PAVEMENT DETAILS	SHEET 3
COVINGTON	SHEET 4-7
COVINGTON COURT	SHEET 8-12
STORM SEWERS	SHEET 13-18
TYPE 1-A INLET 5'-0"	SHEET 19
TYPE 1-A INLET 10'-0"	SHEET 20
DROP INLET	SHEET 21
VALLEY GUTTER DETAILS	SHEET 22
STREET SIGN DETAILS	SHEET 22A
CROSS SECTIONS	SHEET 23-54
EARTHWORK SUMMARY	SHEET 55
COORDINATE SHEET	SHEET 56
STORM WATER POLLUTION PREVENTION PLAN	SHEET 57
THE LOCHS AT ABERDEEN ADDITION PLAT	SHEET 58

*DRAINAGE
BOOKED
10-4-02
MEL
C-228*

BENCH MARKS

(City of Wichita Datum)

- City of Wichita Benchmark disc, 67' south of centerline 21st St. & 79' south of section line, and 46' east of centerline 119th St. Elev. 172.08
- 80d nail in power pole, 30' east and 50' south of Northwest Corner of Government Lot 6 in SW Quarter of Section 6, T27S, R1W. Elev. 172.08
- 80d nail in power pole 50' south of NE corner of Government Lot 3 in NW Quarter of Section 6, T27S, R1W. Elev. 179.98
- 80d nail in power pole 40' west and 40' north of the NW Corner of the NW Corner of Sec. 6, T27S, R1W. Elev. 175.05



LOCATION MAP
No Scale

James M. Ufford
6-18-01

MAY 2001

PE POE & ASSOCIATES OF KANSAS, INC.
CONSULTING ENGINEERS
5940 E. Central, Suite 200 ■ Wichita, KS 67208-4242
Phone 316/685-4114 ■ FAX 316/685-4444

TOTAL PROJECT LENGTH: 3,276 L.F. = 0.62 Mi.

(WITHIN R/W)
EARTHWORK SUMMARY

Excavation	6575.5 C.Y.
Compacted Fill	740.0 C.Y.
Loose Fill	1024.8 C.Y.