

Δ = 17°4'5" L = 204.65' R = 687.00' T = 103.09'

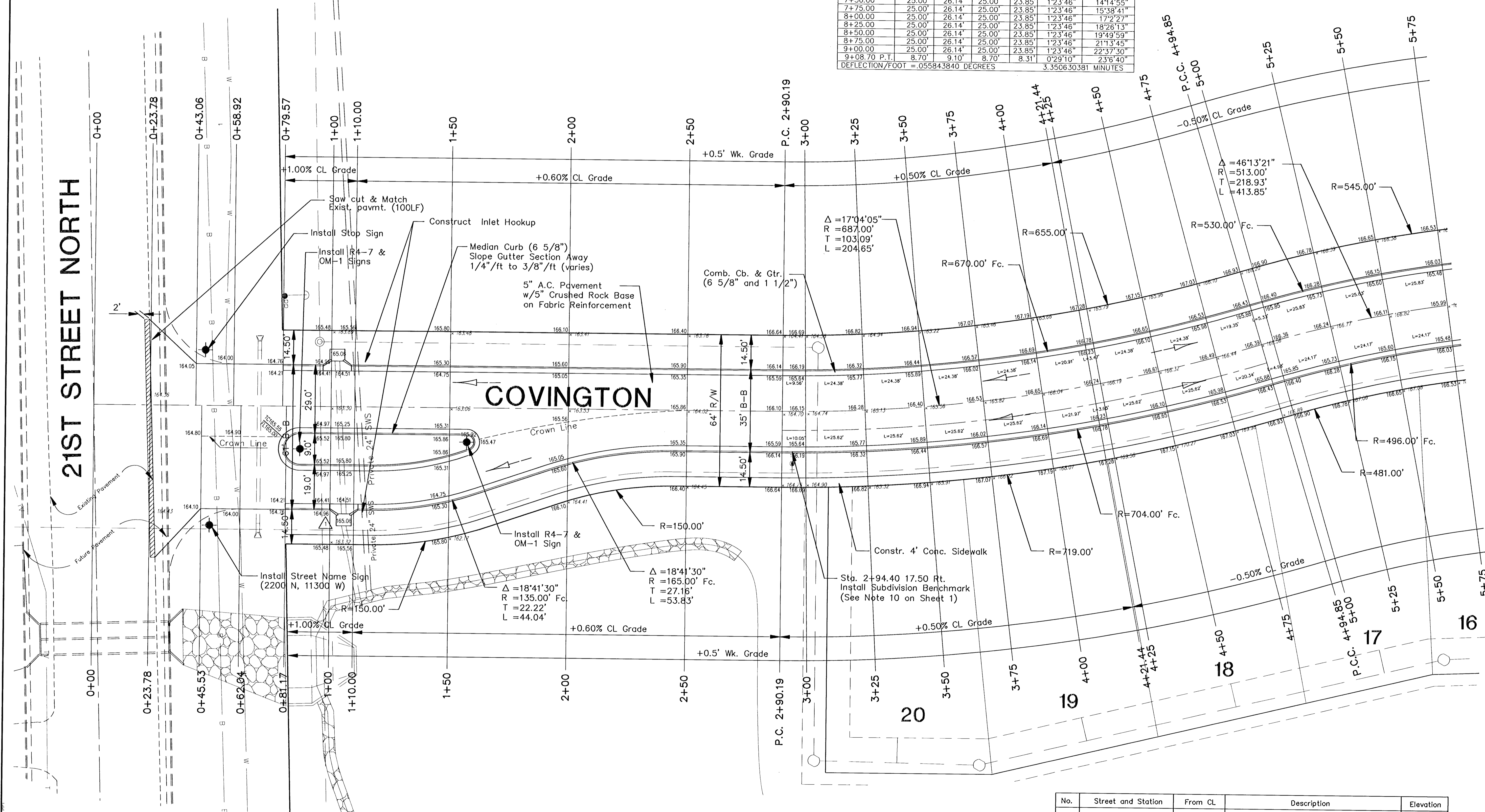
STATION	CL ARC	CHORD LENGTH		8' RT. DEFLECTION	TOTAL DEFLECTION
		8' LT.	CL		
2+90.19 P.C.					
3+00.00	9.81'	9.45'	9.81'	10.17'	0°24'33"
3+25.00	25.00'	24.07'	25.00'	25.93'	1°2'33"
3+50.00	25.00'	24.07'	25.00'	25.93'	1°2'33"
3+75.00	25.00'	24.07'	25.00'	25.93'	1°2'33"
4+00.00	25.00'	24.07'	25.00'	25.93'	1°2'33"
4+25.00	25.00'	24.07'	25.00'	25.93'	1°2'33"
4+50.00	25.00'	24.07'	25.00'	25.93'	1°2'33"
4+75.00	25.00'	24.07'	25.00'	25.93'	1°2'33"
4+94.85 P.T.	19.84'	19.11'	19.84'	20.58'	0°49'39"

DEFLECTION/FOOT = .041699985 DEGREES 2.501999105 MINUTES

Δ = 46°13'21" L = 413.85' R = 513.00' T = 218.93'

STATION	CL ARC	CHORD LENGTH		8' RT. DEFLECTION	TOTAL DEFLECTION
		8' LT.	CL		
4+94.85 P.C.					
5+00.00	5.15'	5.39'	5.15'	4.91'	0°17'15"
5+25.00	25.00'	26.14'	25.00'	23.85'	1°23'46"
5+50.00	25.00'	26.14'	25.00'	23.85'	1°23'46"
5+75.00	25.00'	26.14'	25.00'	23.85'	1°23'46"
6+00.00	25.00'	26.14'	25.00'	23.85'	1°23'46"
6+25.00	25.00'	26.14'	25.00'	23.85'	1°23'46"
6+42.03	17.03'	17.91'	17.03'	16.25'	0°57'4"
6+50.00	7.97'	8.34'	7.97'	7.60'	0°36'42"
6+75.00	25.00'	26.14'	25.00'	23.85'	1°23'46"
7+00.00	25.00'	26.14'	25.00'	23.85'	1°23'46"
7+25.00	25.00'	26.14'	25.00'	23.85'	1°23'46"
7+50.00	25.00'	26.14'	25.00'	23.85'	1°23'46"
7+75.00	25.00'	26.14'	25.00'	23.85'	1°23'46"
8+00.00	25.00'	26.14'	25.00'	23.85'	1°23'46"
8+25.00	25.00'	26.14'	25.00'	23.85'	1°23'46"
8+50.00	25.00'	26.14'	25.00'	23.85'	1°23'46"
8+75.00	25.00'	26.14'	25.00'	23.85'	1°23'46"
9+00.00	25.00'	26.14'	25.00'	23.85'	1°23'46"
9+08.70 P.T.	8.70'	9.10'	8.70'	8.31'	0°29'10"

DEFLECTION/FOOT = .055843840 DEGREES 3.350630381 MINUTES

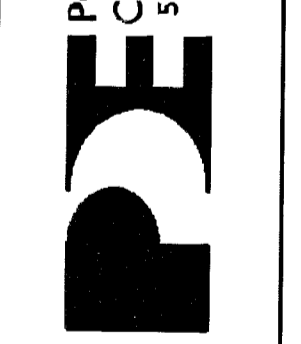


No.	Street and Station	From CL	Description	Elevation
1	Covington, 2+44.21	17.50' E.	Top of Curb (E) in front of FH	166.16

No.	Date	By	Approval	Revision
1	8/6/01	JMU	JMU	Revised Inlet Locations
2	10/7/01	JMU	JMU	Revised Curve Tables

THE LOOKS AT ABERDEEN
STREET IMPROVEMENTS
COVINGTON
CITY OF WICHITA, KANSAS
MICHAEL E. LINDBERGH, P.E. - CITY ENGINEER
Prof.# 472-83359 O.C.A.# 765881

POE & ASSOCIATES OF KANSAS, INC.
CONSULTING ENGINEERS
5940 E. Central, Suite 200 ■ Wichita, KS 67208-4242
Phone 316/685-4114 ■ FAX 316/685-4444



FINAL
Engineer: J. Ubert
Drawn By: B. Kulla
Poe Job No.: 1656B
Date: May 2001
Sheet 4 of 58

G:\APPS\DATA\1656\1656.dwg Tue Oct 02 08:59:51 2001 James Ubert - Poe & Associates of Kansas, Inc.