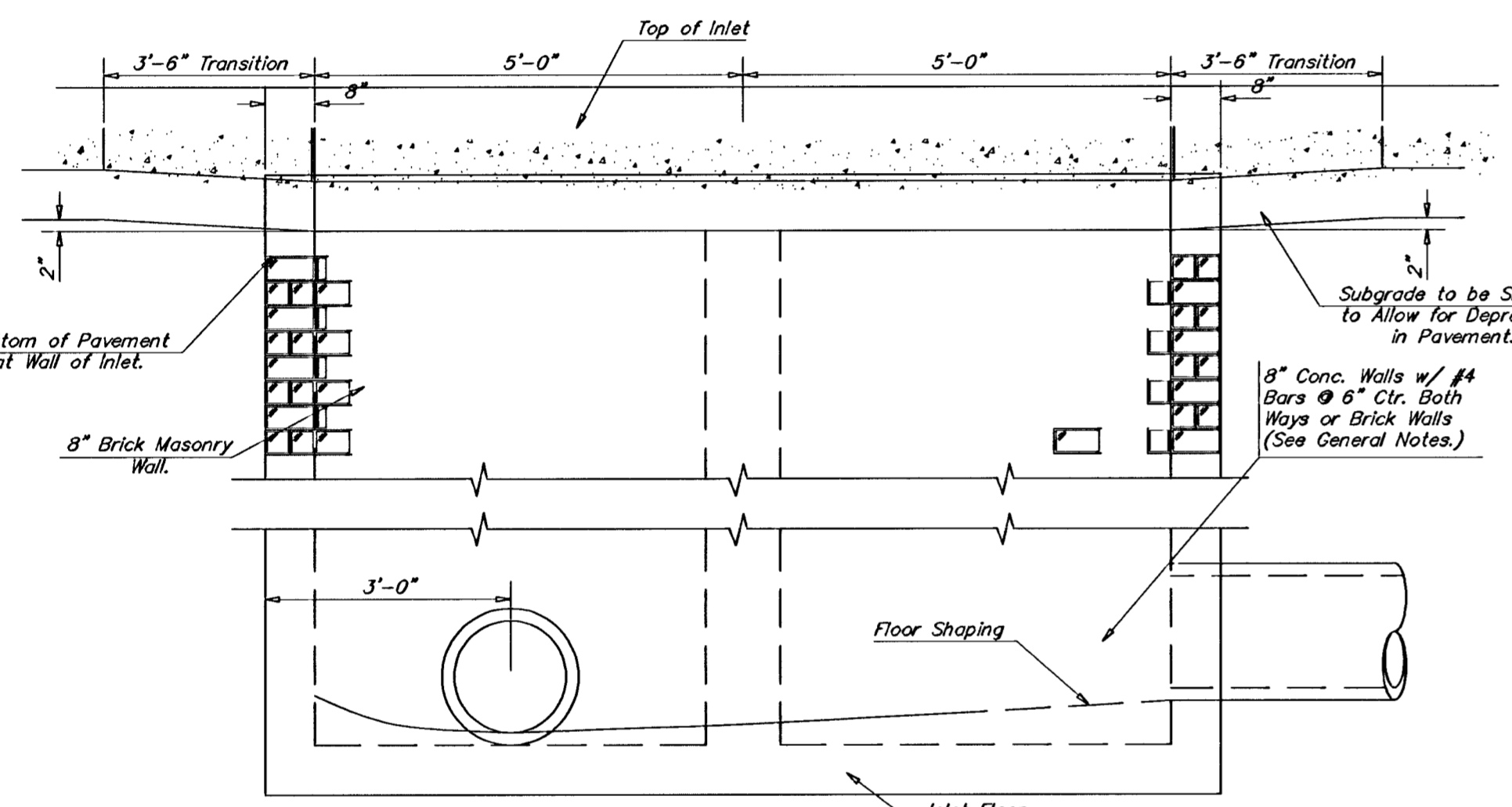


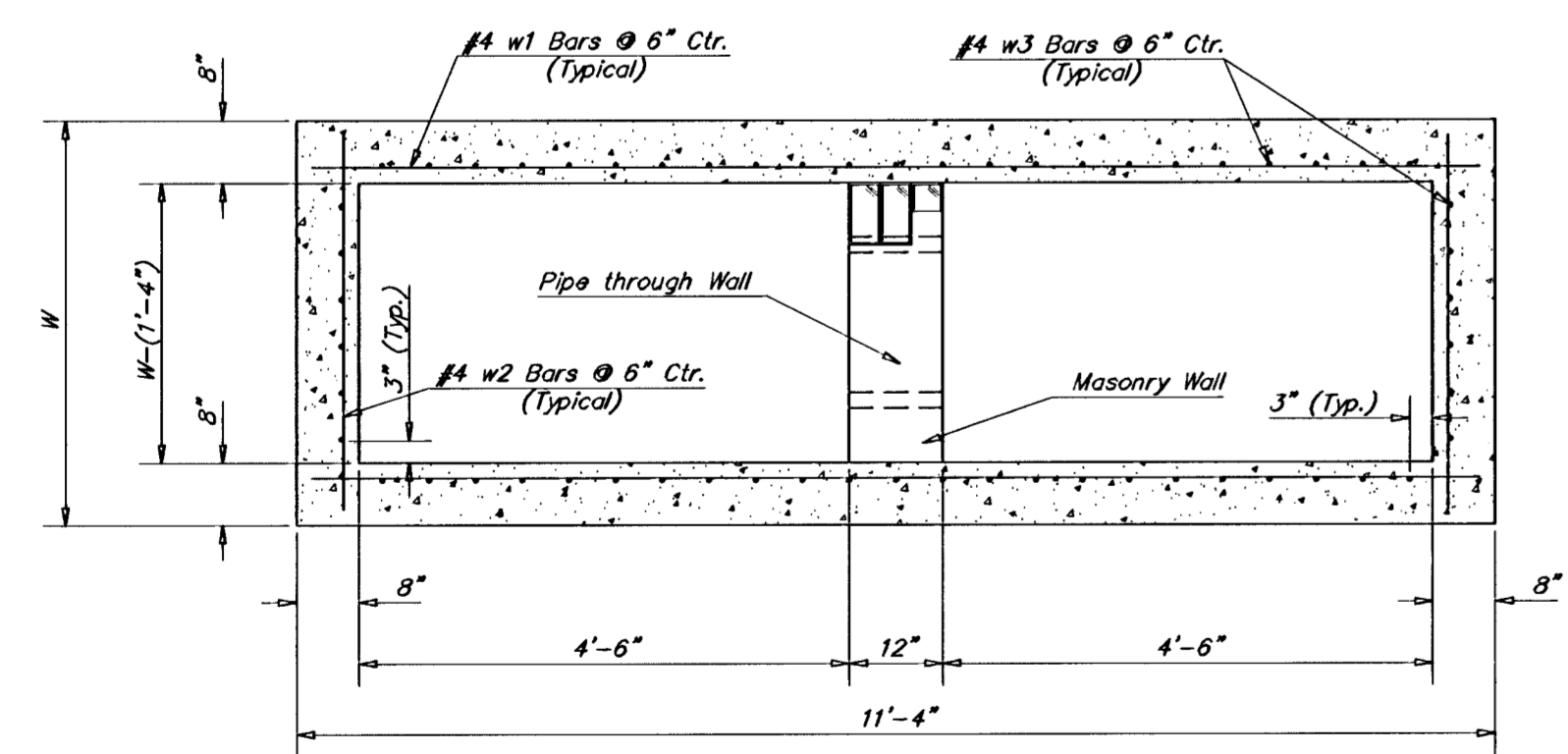
NOTE:
Expansion Joint Only in Curb Area with Concrete Pavement.

PLAN

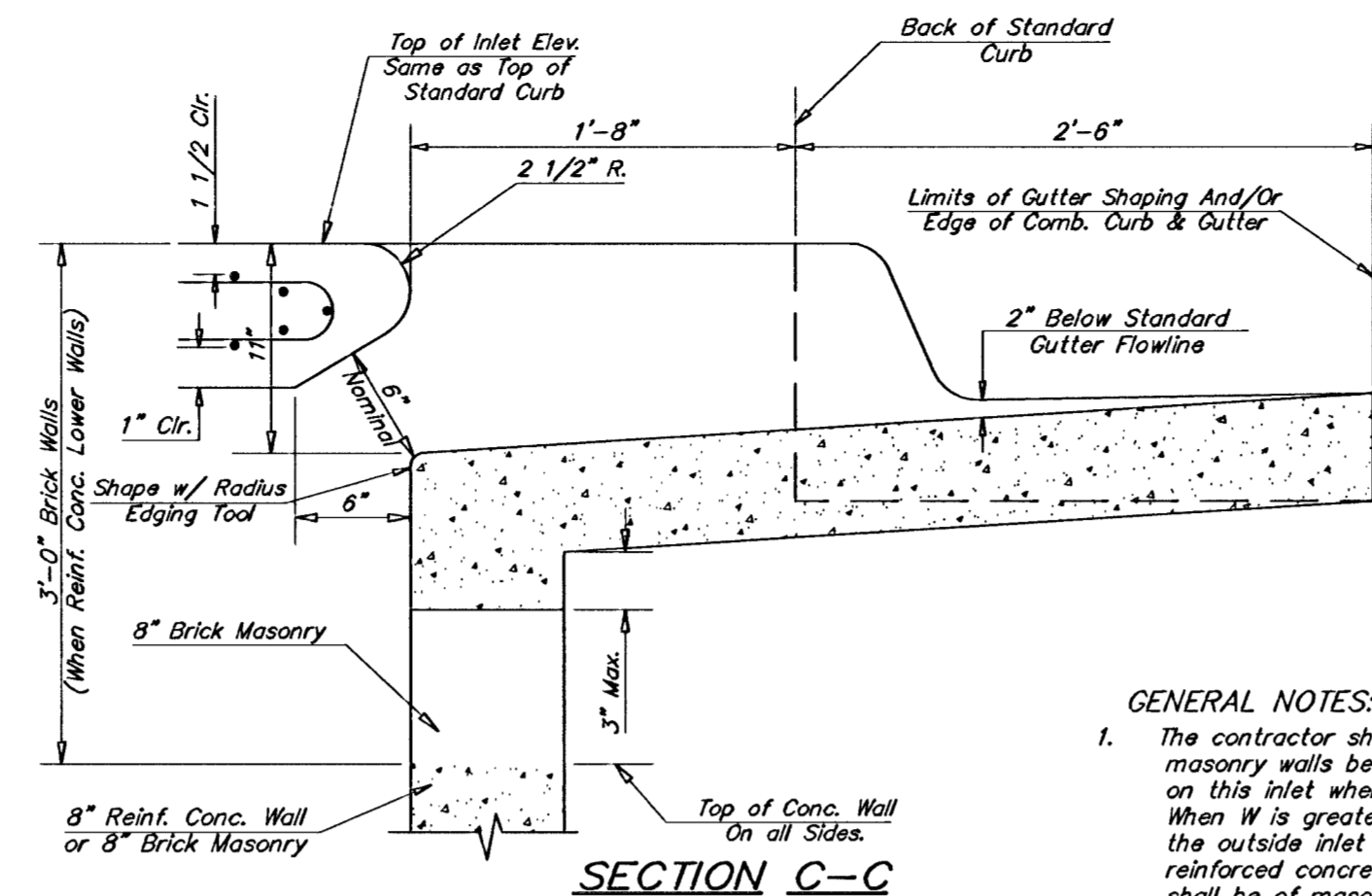
*Left Side Shown Without Slab Reinforcing, Right Side Shown With Slab Reinforcing



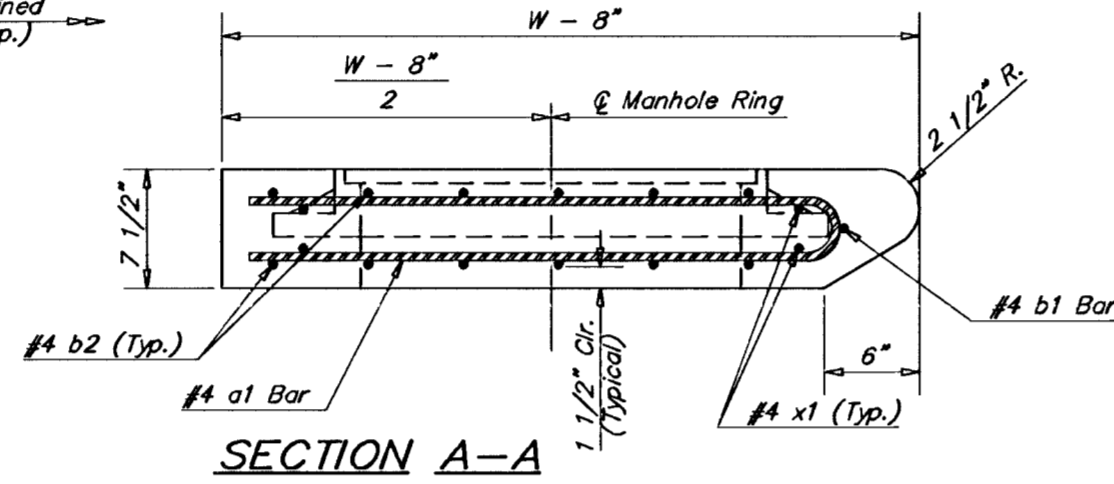
ELEVATION



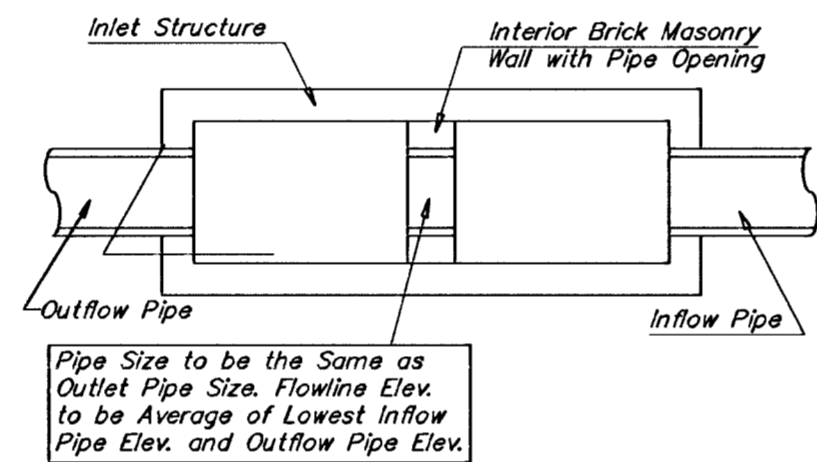
SECTION B-B



SECTION C-C

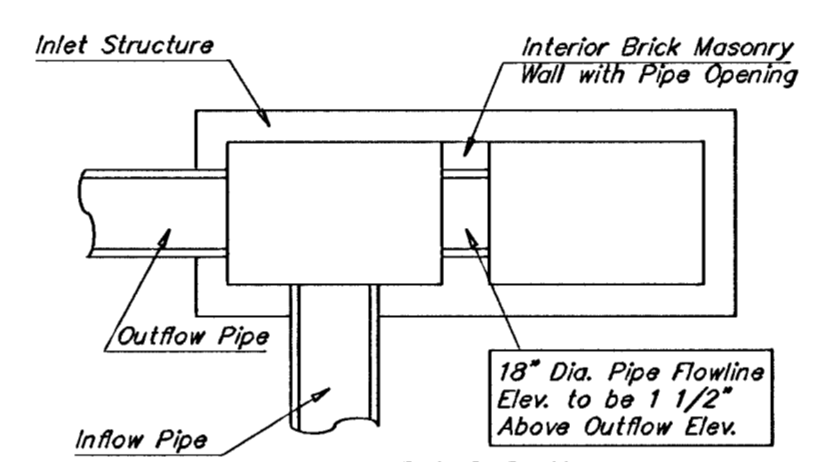


SECTION A-A

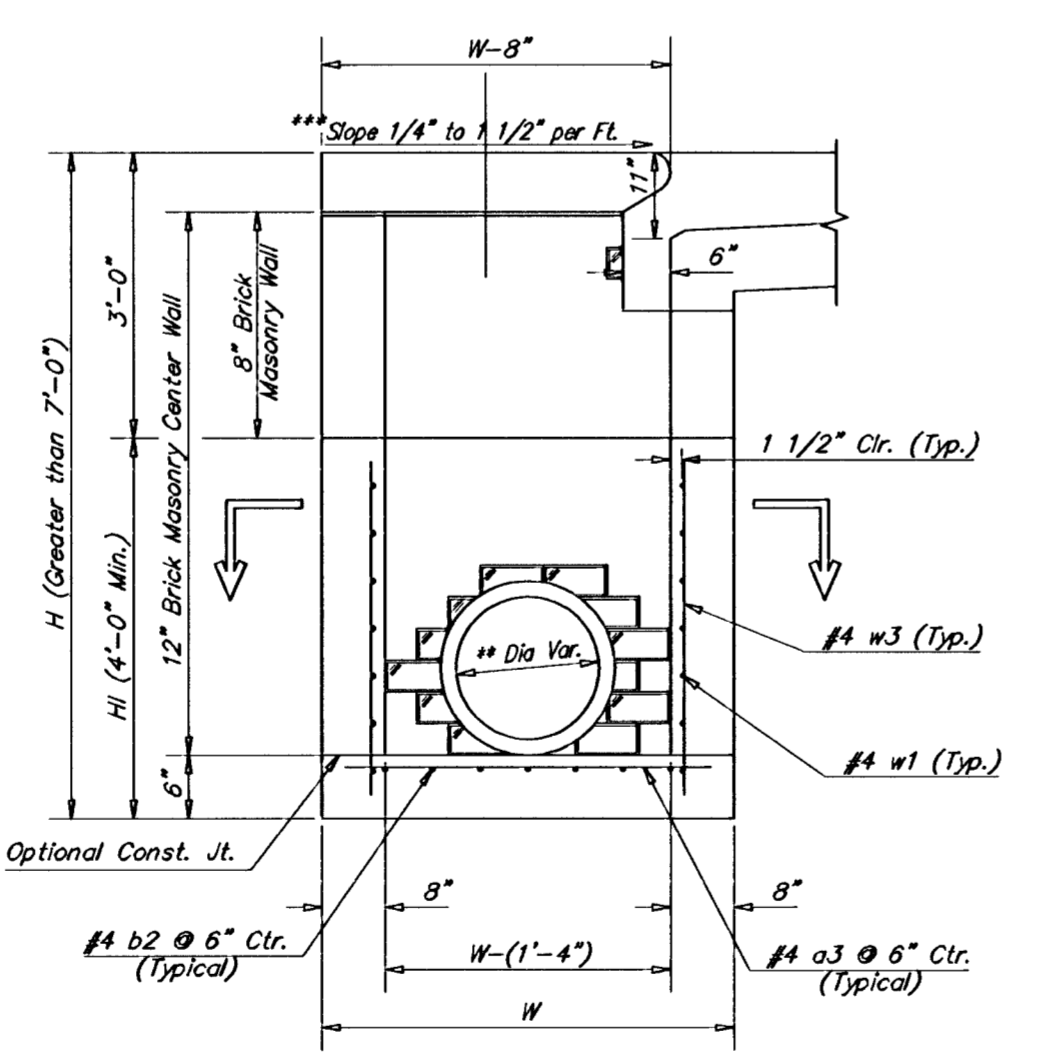


CASE I

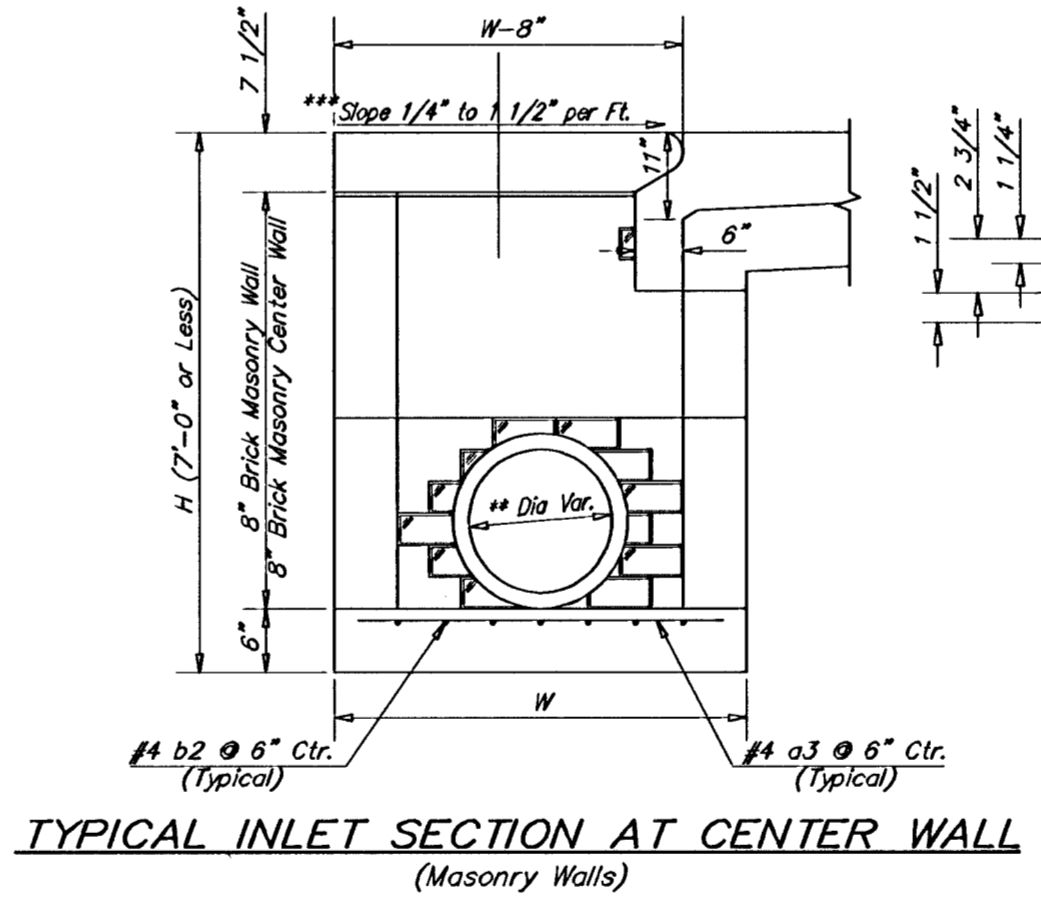
NOTE: Center Wall Pipe Size shall be as Specified in Inlet Construction Notes on the Plans/Profile Sheets for those Cases not Shown Here.



CASE II



TYPICAL INLET SECTION AT CENTER WALL (Reinforced Concrete Walls)



TYPICAL INLET SECTION AT CENTER WALL (Masonry Walls)

NOTES:
** A center wall opening shall be provided by means of a section of reinforced concrete pipe. See Case I and Case II above.
*** Slope of inlet tops to match sidewalk of parking slopes within limits indicated.

CRUSHED ROCK GRADATION REQUIREMENTS
Percent of Aggregate Retained

1 1/2"	0
3/4"	15-60
#4	40-80
#40	74-92
P-200	4-12

Rock Quality Shall Be The Same As Specified For Coarse Aggregate For Asphalt Concrete Mixes.

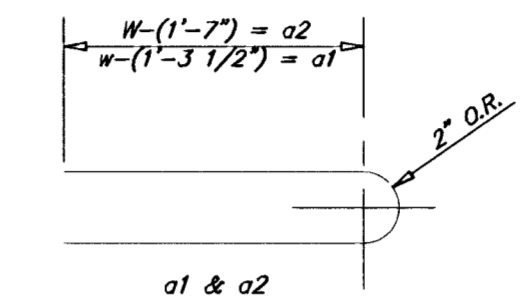
PRECAST SLAB AND FLOOR REINFORCING

MARK	SIZE	W = 4'-4"	W = 5'-4"	W = 6'-4"	W = 7'-4"	W = 8'-4"
a1	#4	13 6'-7"	13 8'-7"	13 10'-7"	13 12'-7"	13 14'-7"
a2	#4	4 6'-0"	4 8'-0"	4 10'-0"	4 12'-0"	4 14'-0"
a3	#4	23 4'-1"	23 5'-1"	23 6'-1"	23 7'-1"	23 8'-1"
b1	#4	1 9'-9"	1 9'-9"	1 9'-9"	1 9'-9"	1 9'-9"
b2	#4	23 11'-1"	29 11'-1"	35 11'-1"	41 11'-1"	47 11'-1"
x1	#4	16 3'-10"	16 4'-2"	16 4'-6"	16 4'-10"	16 5'-2"

WALL REINFORCING

MARK	SIZE	W = 4'-4"	W = 5'-4"	W = 6'-4"	W = 7'-4"	W = 8'-4"
w1	#4	1 11'-1"	1 11'-1"	1 11'-1"	1 11'-1"	1 11'-1"
w2	#4	1 4'-1"	1 5'-1"	1 6'-1"	1 7'-1"	1 8'-1"
w3	#4	52	56	60	64	68

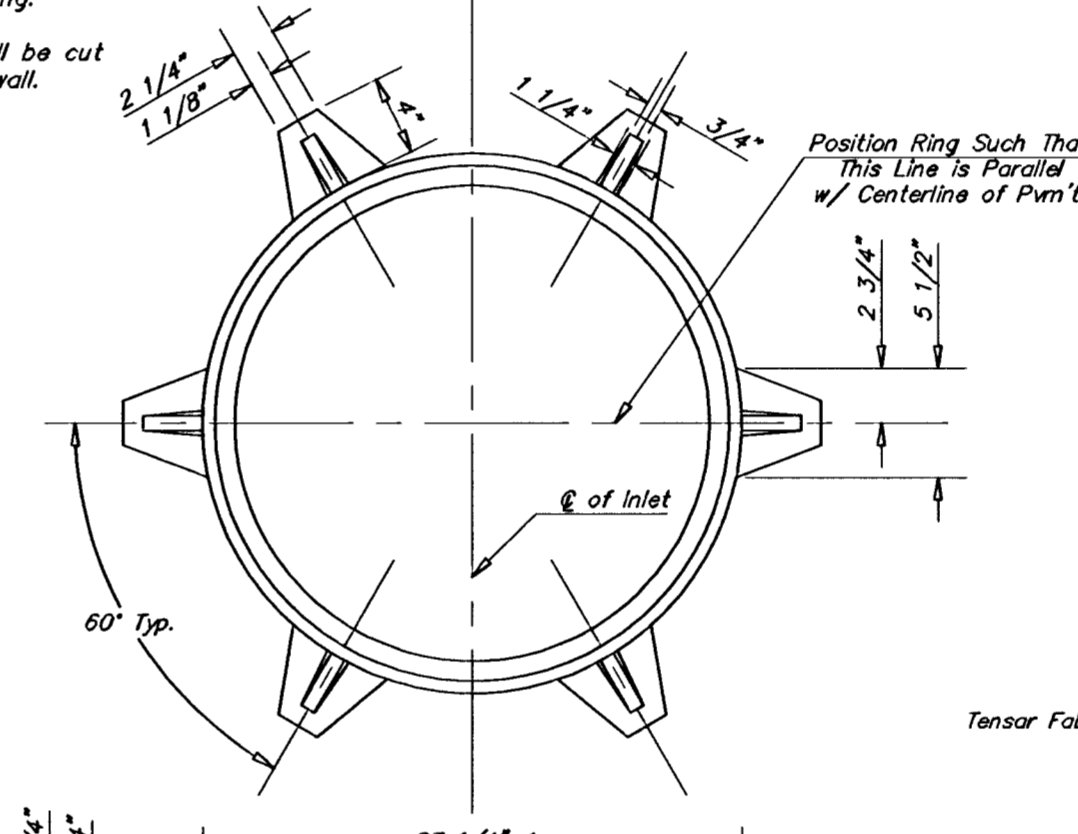
* Field Band or Cut Reinforcing as Required for Clearance.
① 4 (14 - 12") (14 - 21") Rounded down to nearest 0.5"
② 14 - 3"



BENDING DIAGRAM

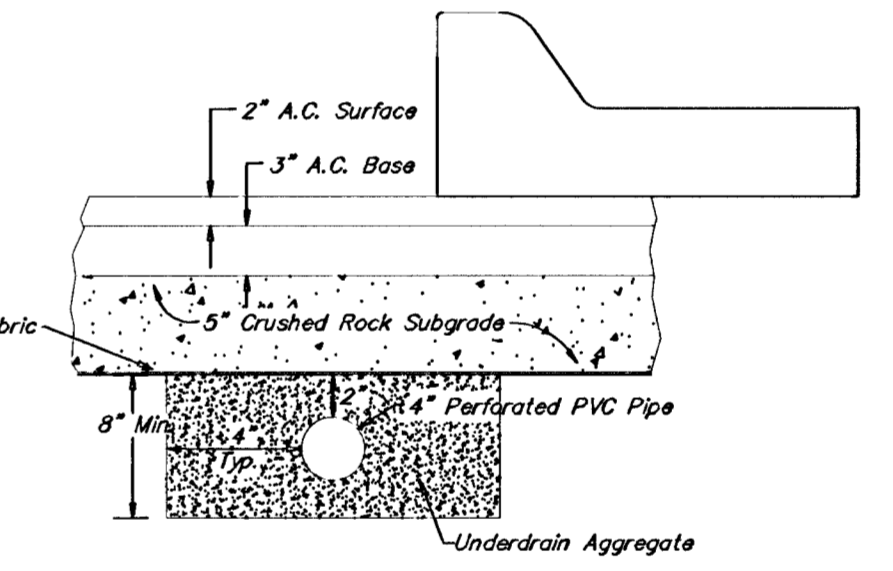
STANDARD CURB INLET PRECAST TOPS

W	PRE-CAST TOP SIZE	PIPE SIZE	CUL. YD. CONC.
4'-4"	3'-8" 11'-4" 7 1/2"	21" & SMALLER	0.83t
5'-4"	4'-8" 11'-4" 7 1/2"	24" & 30"	1.02t
6'-4"	5'-8" 11'-4" 7 1/2"	36" & 42"	1.35t
7'-4"	6'-8" 11'-4" 7 1/2"	48" & 54"	1.81t
8'-4"	7'-8" 11'-4" 7 1/2"	60" & 66"	1.87t

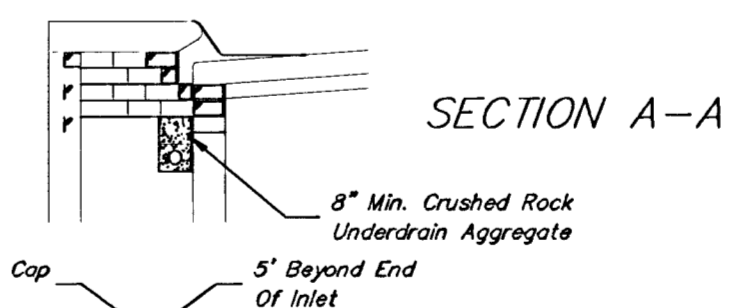


MANHOLE RING AND COVER

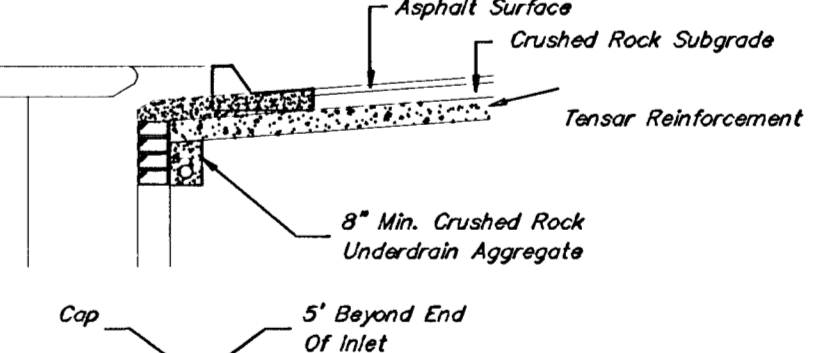
Weight = 180 lbs.
*See City of Wichita Standard Manhole Ring and Cover Detail Sheet for Cover Details to Be Used With Inlet Frame.



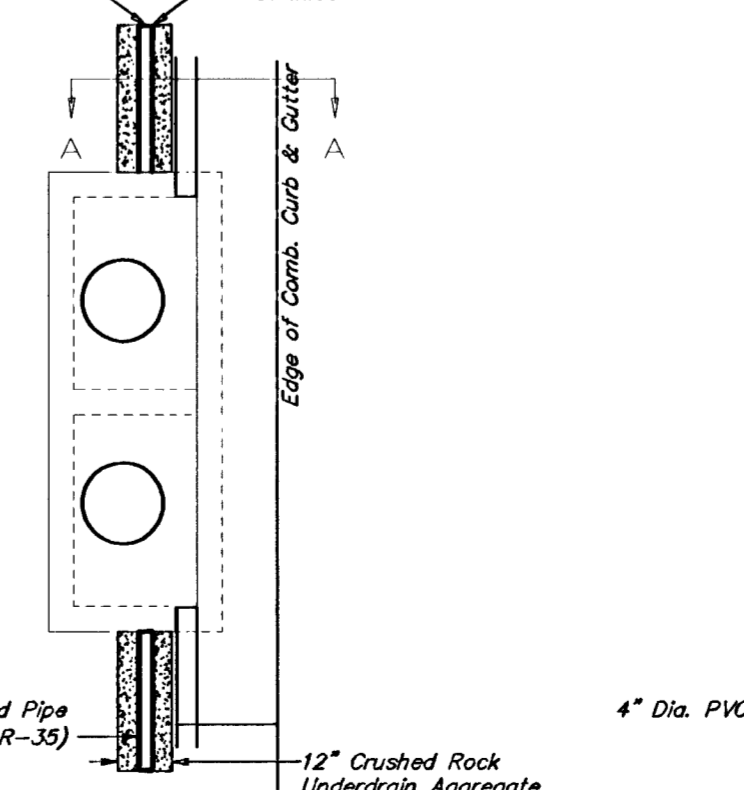
NOTE: Place 4" PVC Perforated Pipe at all drainage sump locations.
Cast of Underdrain System to be incidental to the Reinforced Crushed Rock Subgrade.



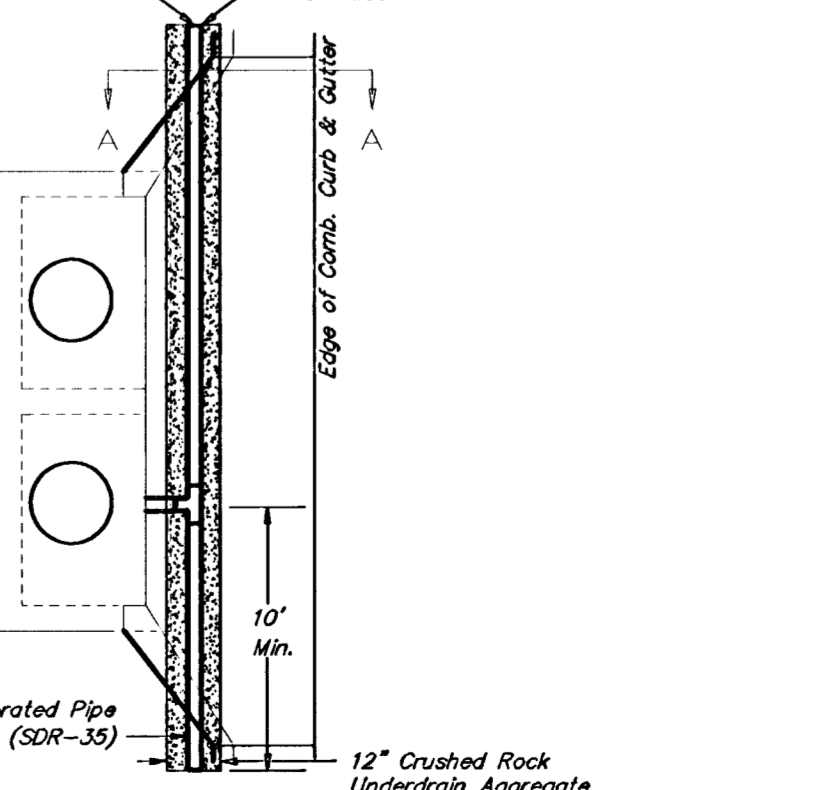
SECTION A-A



Type 1-1 Inlet



Type 1 & 2 Inlet PAVEMENT UNDERDRAIN DETAIL



Type 1-A Inlet

THE LOOKS AT ABERDEEN
STREET IMPROVEMENTS
10'-0" CURB INLET DETAILS
CITY OF WICHITA, KANSAS
MICHAEL E. LINDEBAK, P.E. - CITY ENGINEER
Proj.# 472-83359 O.C.A.# 765681

POE & ASSOCIATES OF KANSAS, INC.
CONSULTING ENGINEERS
5940 E. Central, Suite 200 Wichita, KS 67208-4242
Phone 316/685-4114 FAX 316/685-4444

POE

FINAL
Engineer: J. Ubert
Drawn By: B. Kulla
Poe Job No.: 1656B
Date: May, 2001