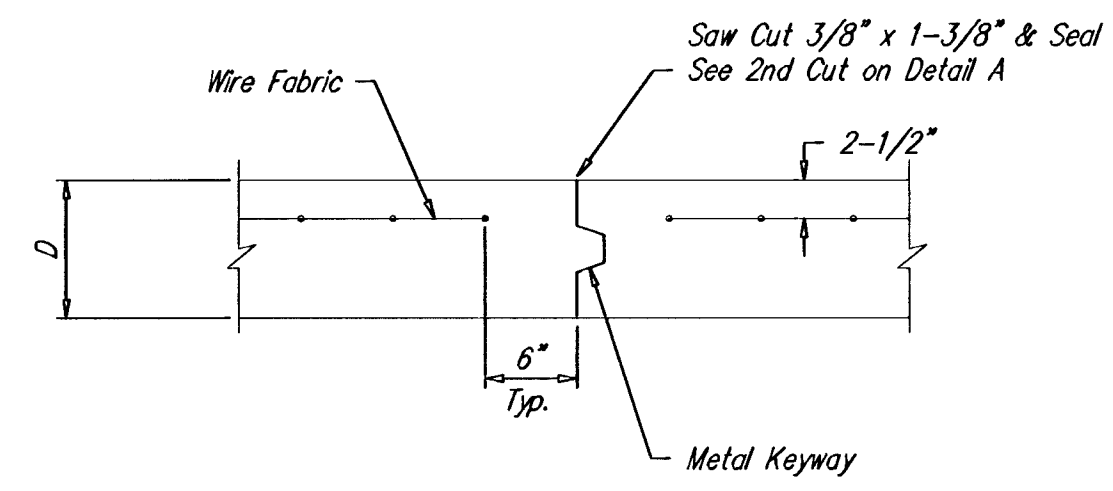
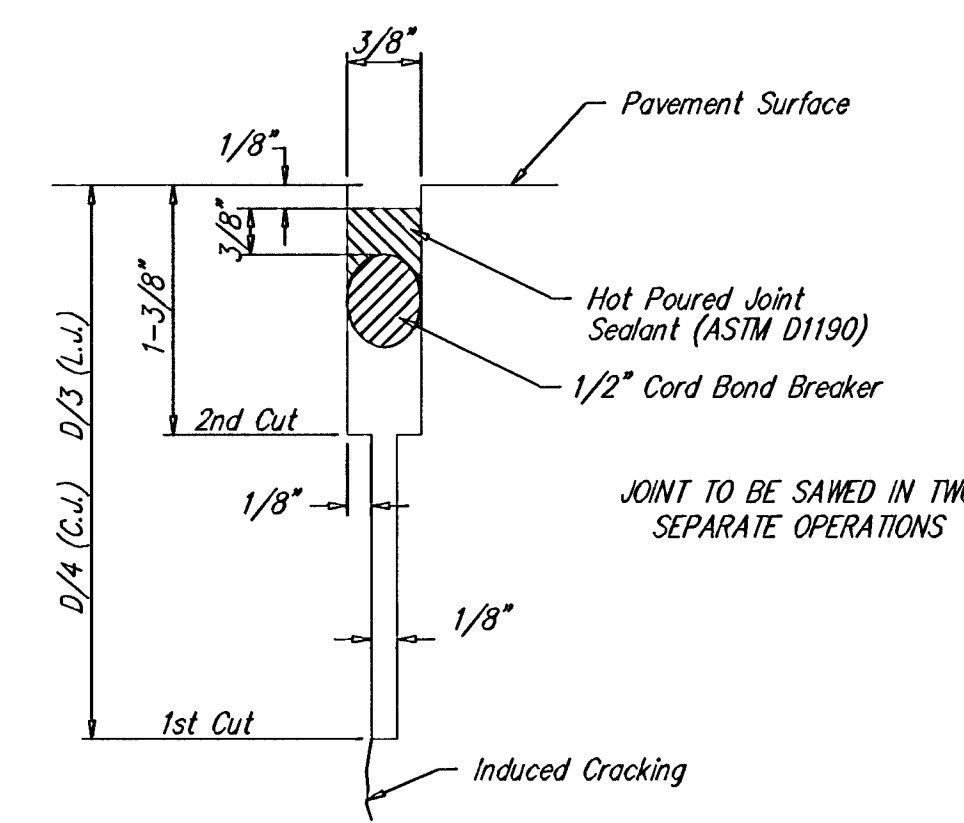


EXPANSION JOINT

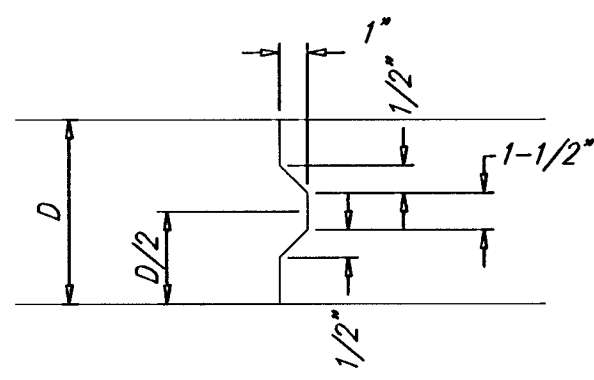
NOTE: Extra Thickness to be Subsidiary to Price of Square Yards Pavement



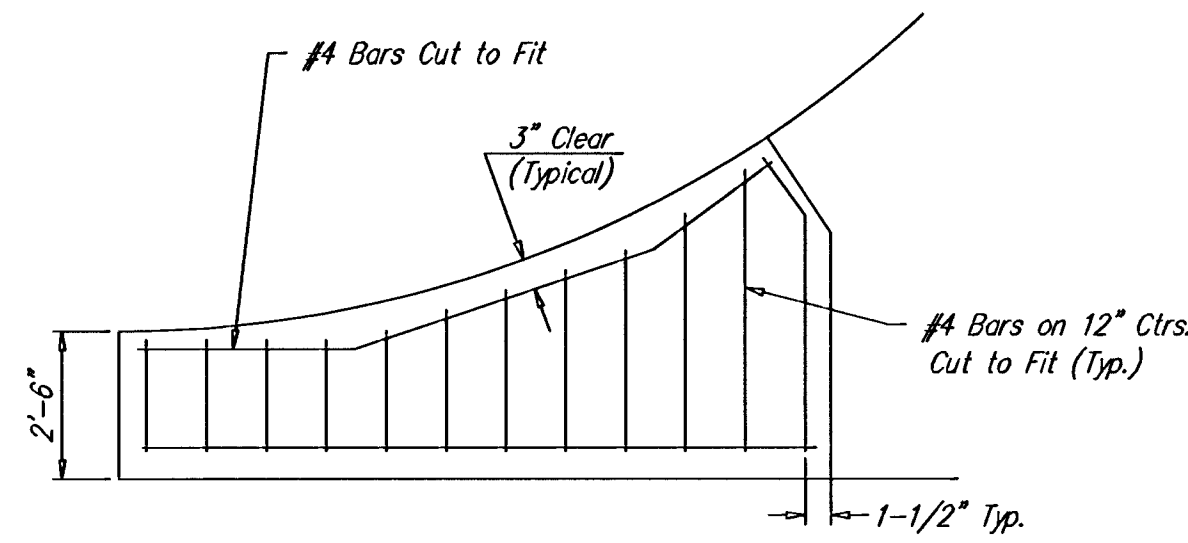
OPTIONAL CONTRACTION JOINT



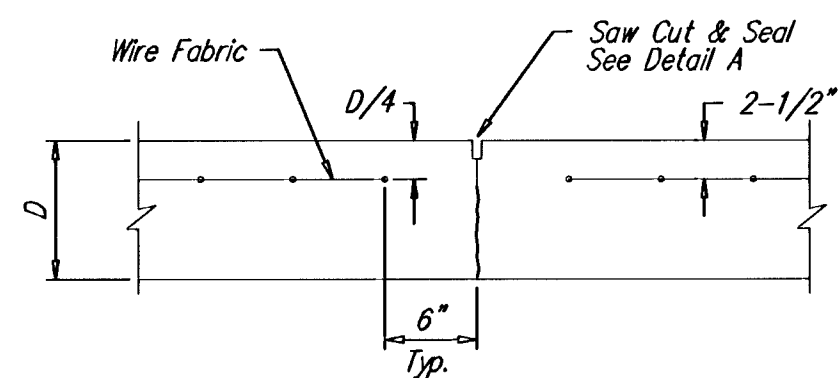
SAW JOINT DETAIL



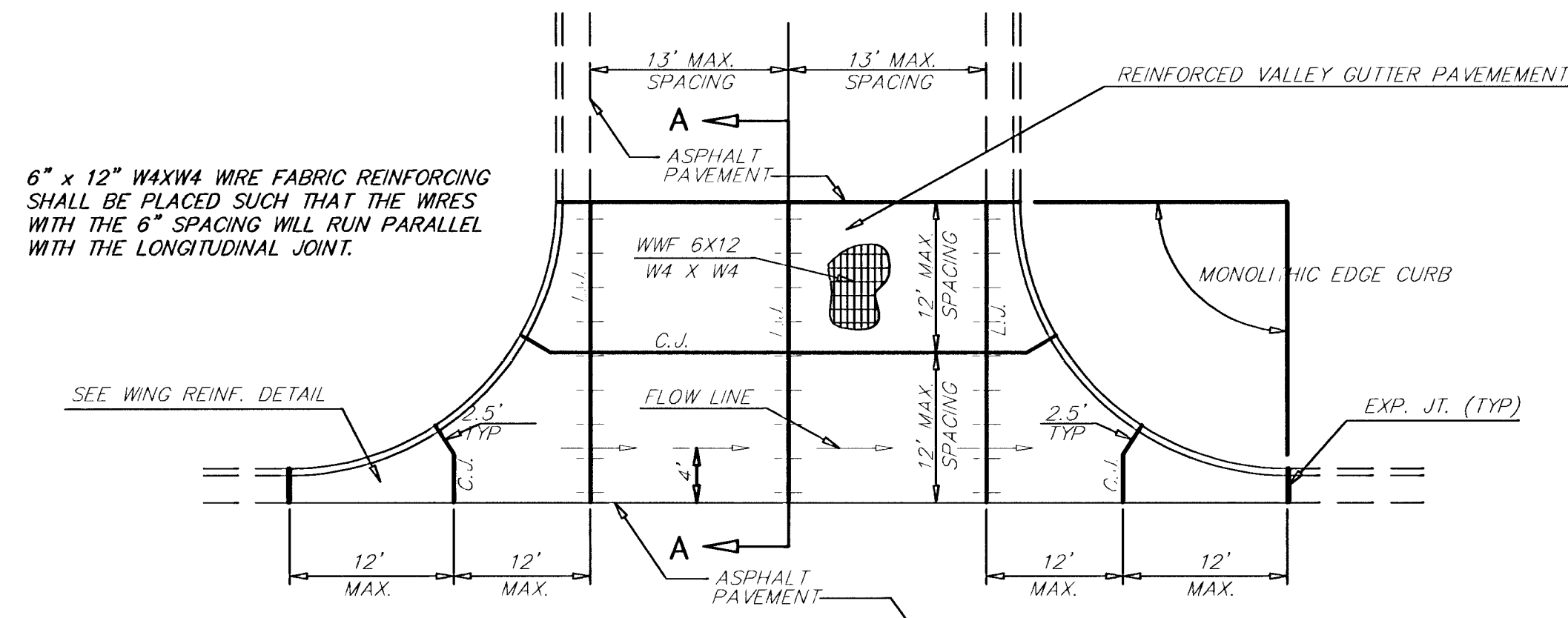
KEYWAY DETAIL



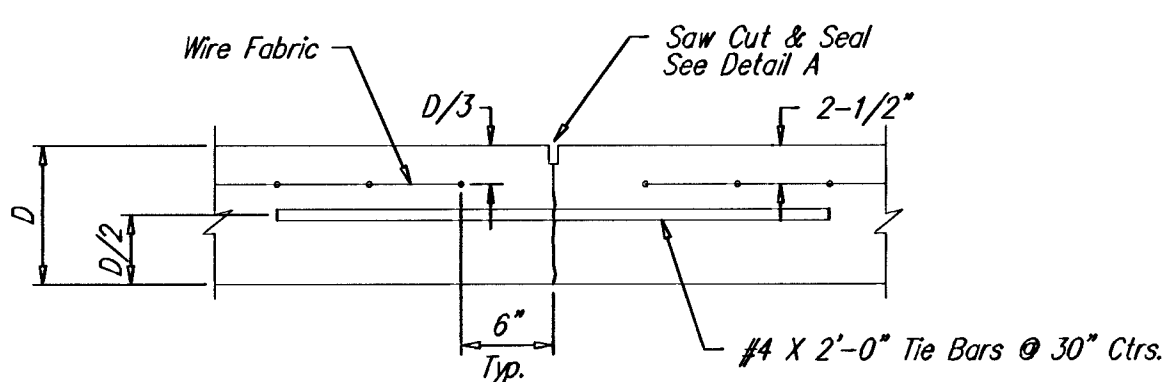
WING REINFORCING DETAIL



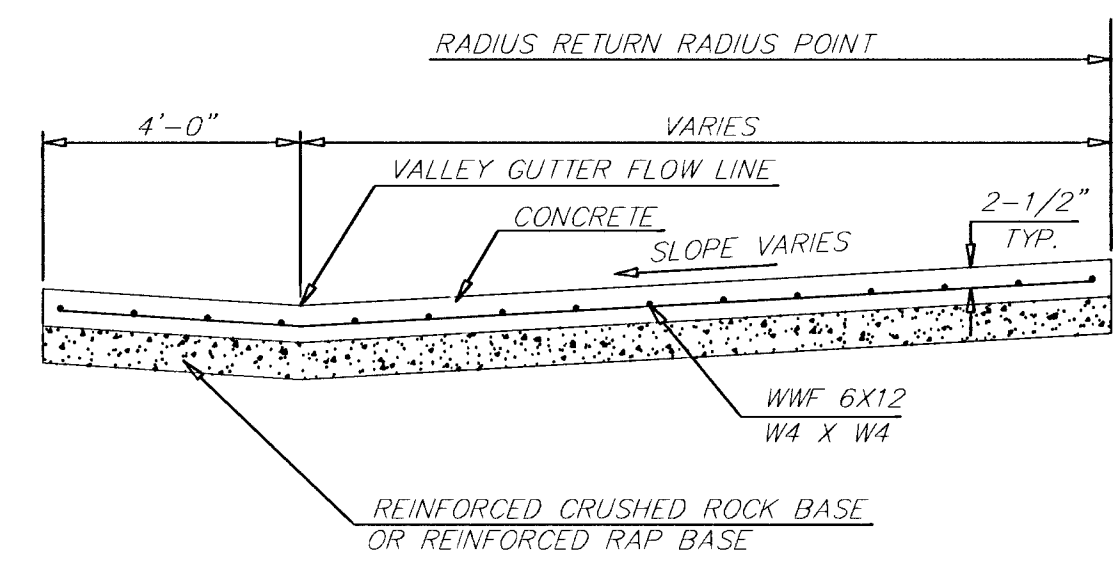
CONTRACTION JOINT DETAIL (C.J.)



PLAN

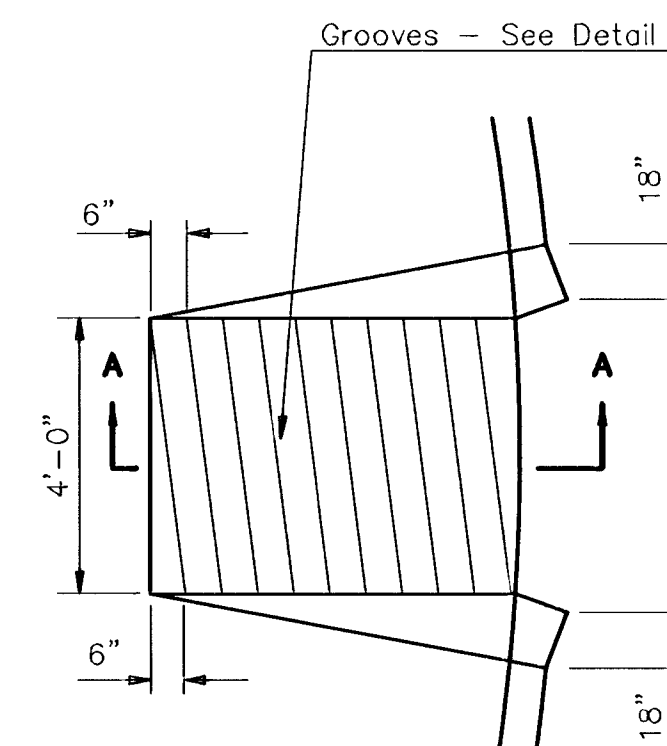


LONGITUDINAL JOINT DETAIL (L.J.)

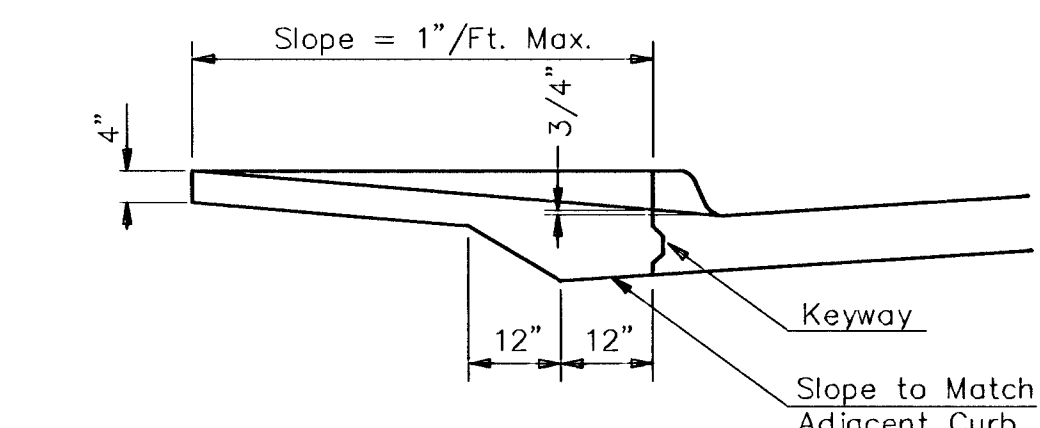


SECTION A-A

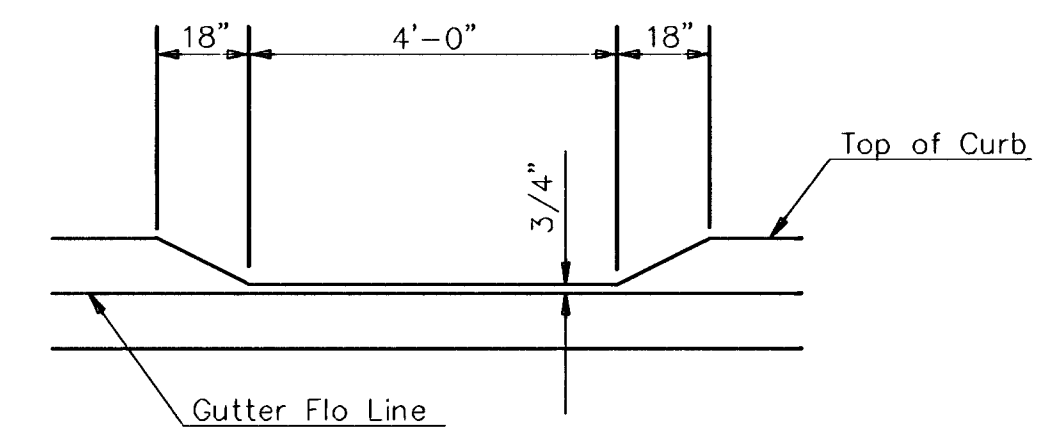
REINFORCED VALLEY GUTTER DETAIL



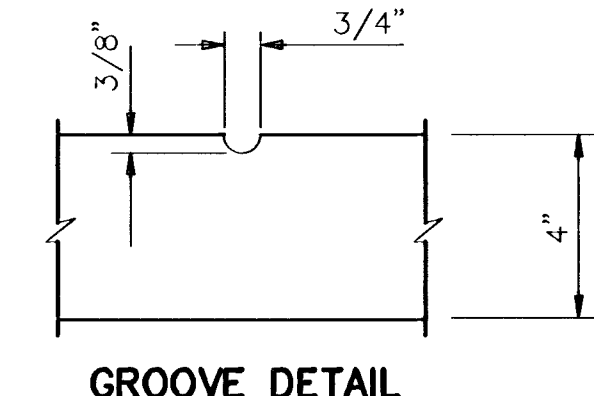
WHEELCHAIR RAMP PLAN VIEW



SECTION A-A



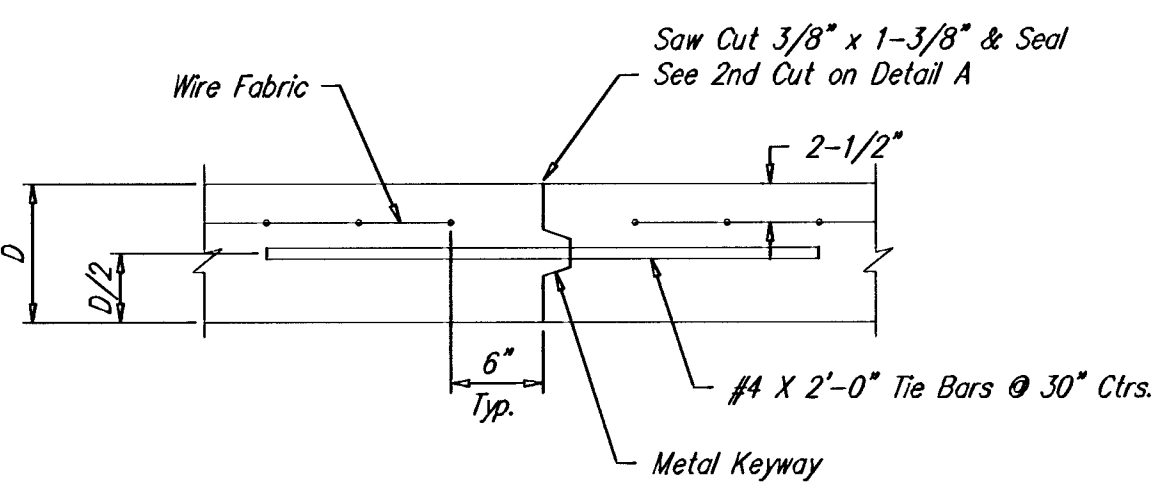
DEPRESSED CURB DETAIL



GROOVE DETAIL

WHEELCHAIR RAMP DETAIL

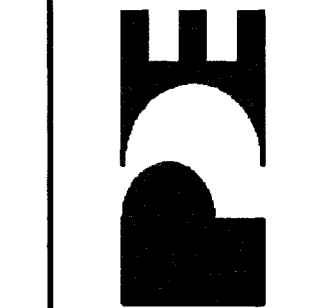
OPTIONAL LONGITUDINAL JOINT DETAIL (L.J.)



No.	Date	By	Approved	Revision

THE LOCKS AT ABERDEEN
STREET IMPROVEMENTS
VALLEY GUTTER/WHEELCHAIR RAMP DETAILS
CITY OF WICHITA, KANSAS
MICHAEL E. LINDBERGH, P.E. - CITY ENGINEER
Proj# 472-83369 O.C.A.# 768681

POE & ASSOCIATES OF KANSAS, INC.
CONSULTING ENGINEERS
5940 E. Central, Suite 200 ■ Wichita, KS 67208-4242
Phone 316/685-4114 ■ FAX 316/685-4444



FINAL
Engineer: J. Ubert
Drawn By: B. Kujala
Poe Job No.: 16568
Date: May 2001