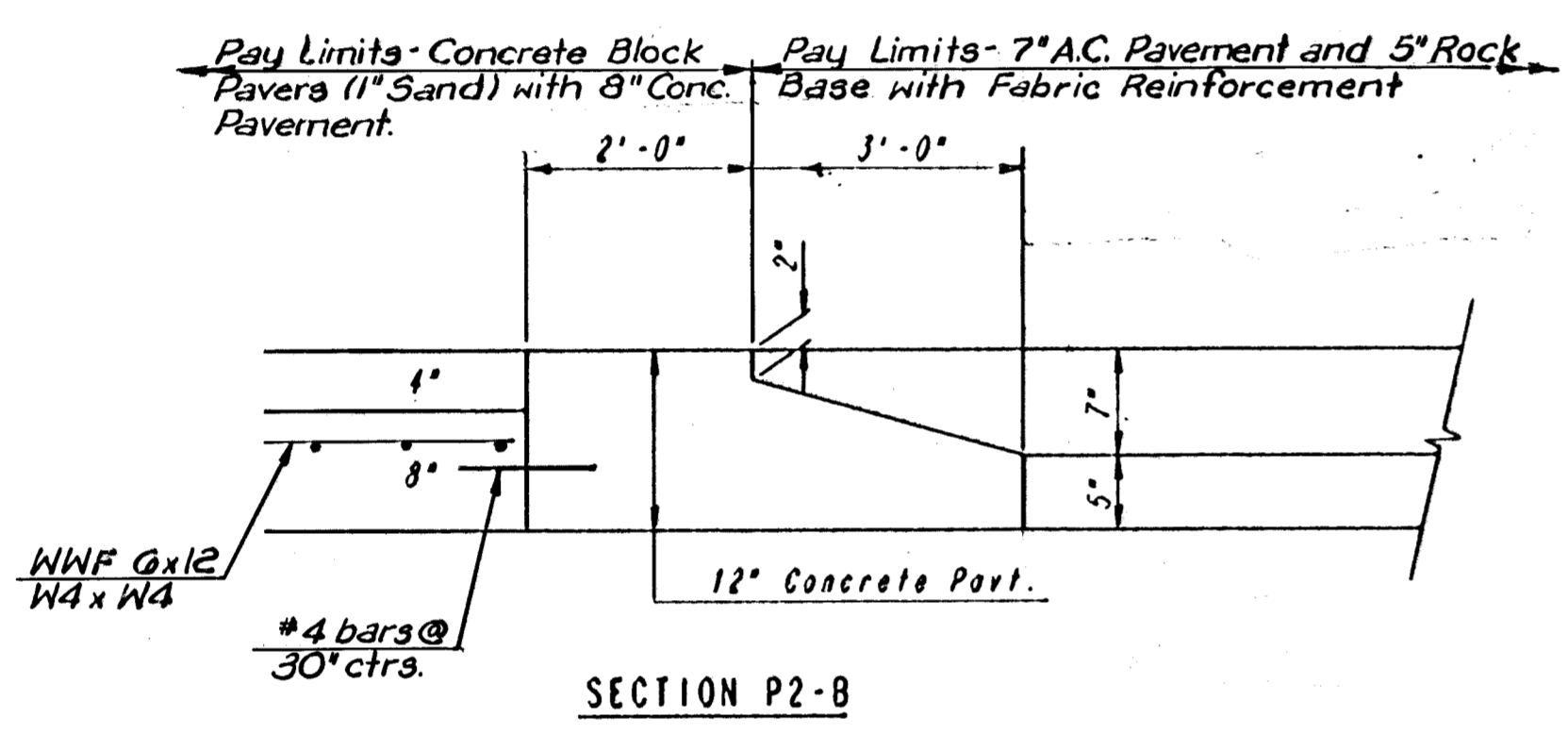
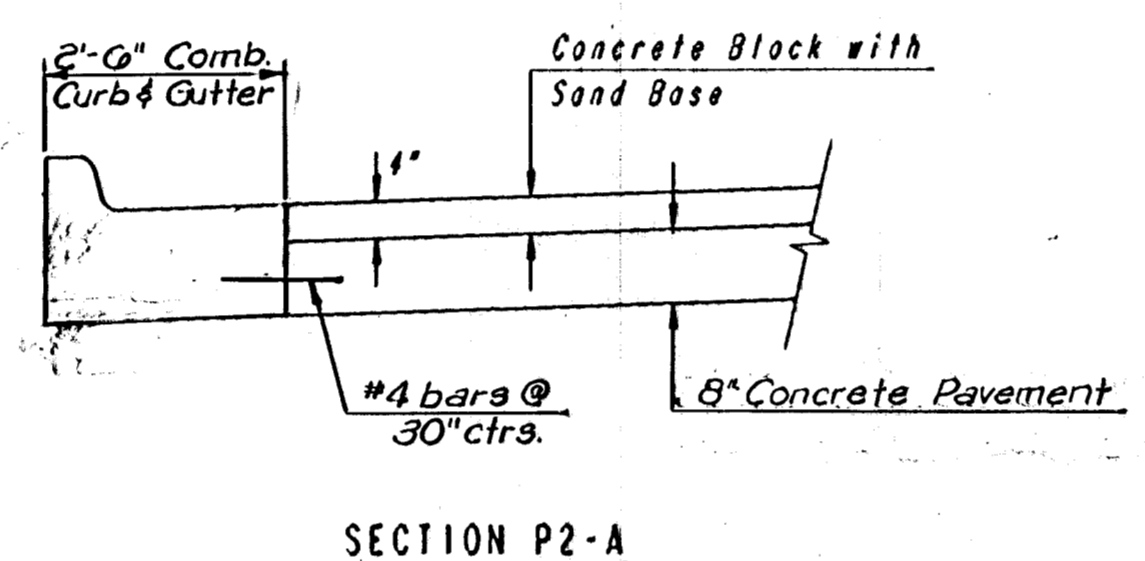


Varies Sta. 47+66.29 to Sta. 49+66 (See Plan)
 15.75' @ to Island E.P. Lt. Sta. 49+04 to Sta. 49+67.

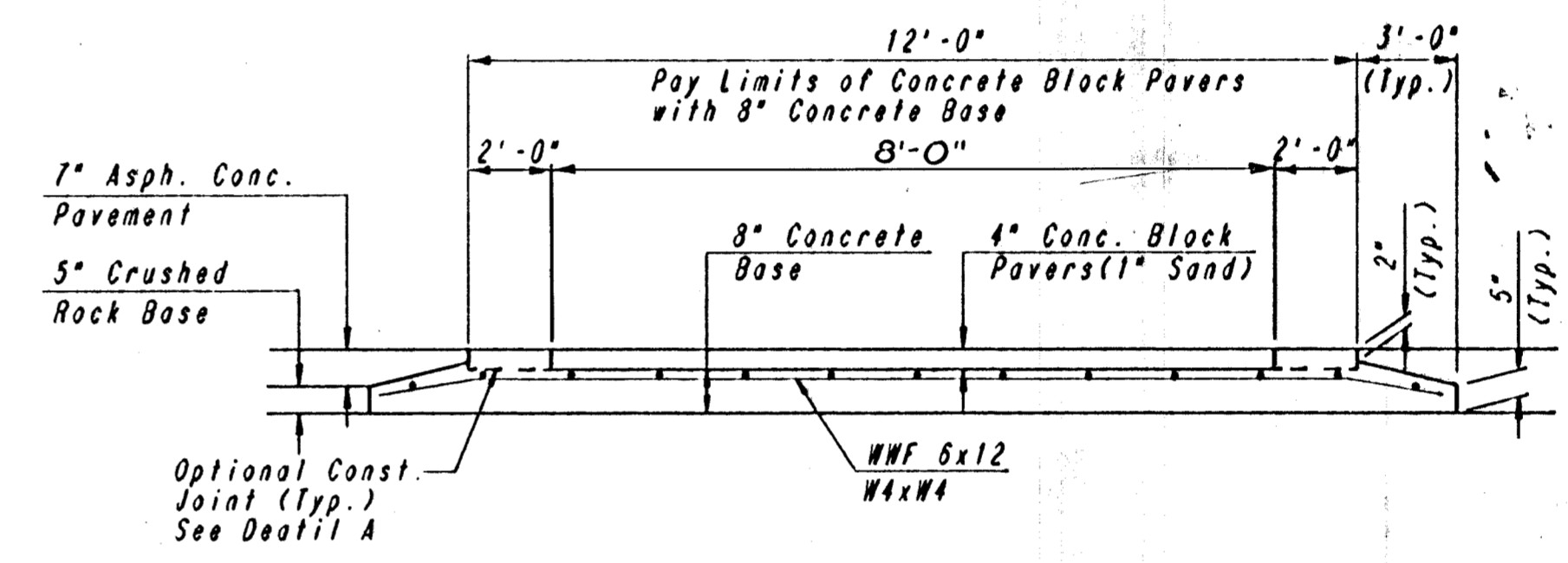
TYPICAL SECTION - STACKMAN DRIVE
 STA. 47+66.29 TO STA. 49+66



SECTION P2-B

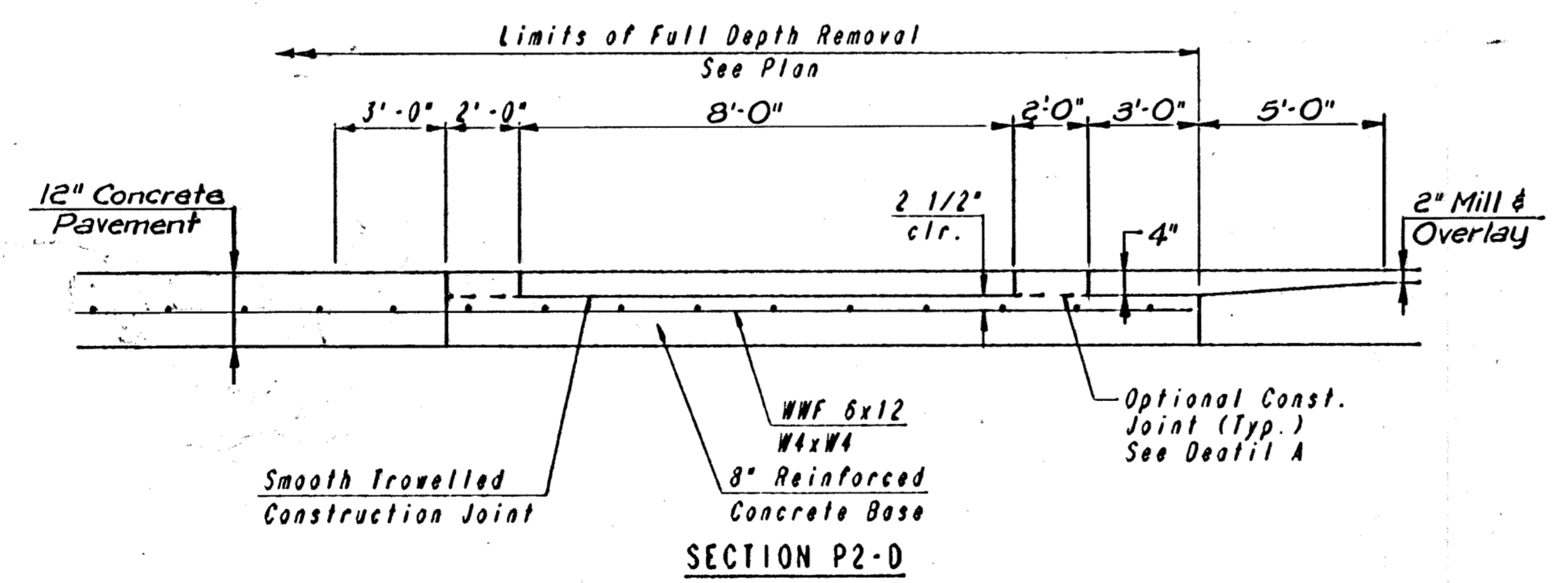


SECTION P2-A

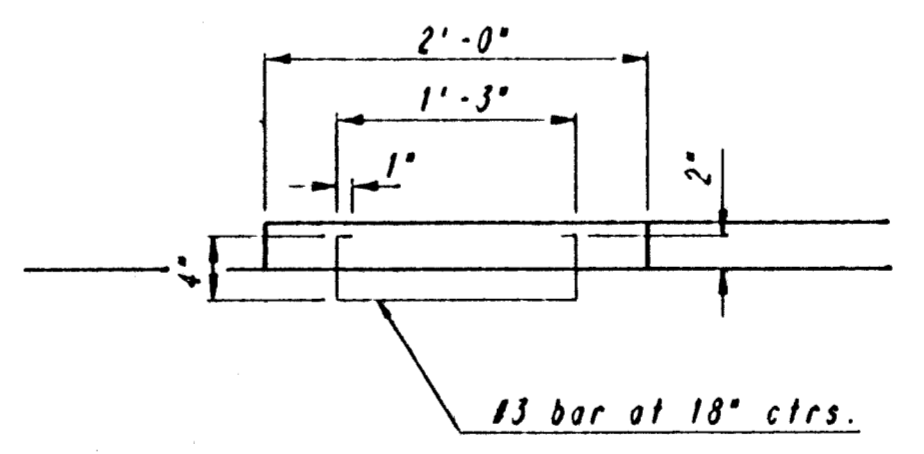


SECTION P2-C

NOTE: ALL REINFORCEMENT SHALL BE ADEQUATELY SUPPORTED BY BAR CHAIRS IN THE REQUIRED POSITION UNLESS APPROVED OTHERWISE BY THE ENGINEER.



SECTION P2-D



DETAIL A

PLAN	DATE
SURVEYED	
NOTE BOOK PLOTTED	
ALIGNMENT CHECKED	
RT. OF WAY CHECKED	

DRAWING NAME: 36-92005 TYP SEC 2
 LOCATION: 04 451
 SCALE: 1/8"=1'-0"
 DATE LAST WORKED ON: 1/18/45
 BRENT REINBERG

REV.	DATE	DESCRIPTION	HELLMUTH, OBATA & KASSEBAUM, INC. DALLAS, TEXAS PROFESSIONAL ENGINEERING CONSULTANTS, P.A. WICHITA, KANSAS BRAD J. GOLDBERG DALLAS, TEXAS	MUSEUM DISTRICT ROADWAY AND PEDESTRIAN IMPROVEMENTS WICHITA, KANSAS TYPICAL SECTIONS
PROJECT NO.			11 JULY 1947	SHEET P2