

P.O.T. @ SIM PARK DRIVE Sta. 49+09.30
 1. Set Nail and Shiner at P.O.T.
 2. Point No. 263
 N=9999.0000
 E=9600.0000

P.O.T. @ Sta. 50+52.13=
 @ Sim Park Drive Sta. 50+52.13
 Δ=6°01'39" (No. Court)
 1. Set PK Nail and Shiner at P.O.T.
 2. Point No. 205
 N=10031.7891
 E=9739.0156

P.O.T. @ West Bound Sta. 55+12.76=
 P.C. @ East Bound Sta. 55+12.76
 1. Set #4 Bar w/cap at P.O.T.
 2. Point No. 215
 N=10089.8750
 E=10195.9671

Sta. 1+34.11 Line No. 1=
 @ Sta. 51+30.00, 37.00' LL
 Const. Spec. Curb Inlet/Manhole
 L=6'-4", W=7'-4", H=5'-8"
 Top Elev.=113.35 Floor Elev.=108.35
 1' Out=108.53(S)
 See Sh. Nos. U4, U4 and U10

Sta. 51+60, 21' LL
 Install 31 L.F.
 4" PVC Sleeve

Sta. 51+89 Remove
 Inlet, 32' LL

Const. 72 S.Y.
 7" V.G. w/ 5" Crushed
 Rock Base and Fabric
 Reinforcement (55 L.F.
 Monolithic Edge Curb)

Sta. 52+13, 25' LL
 Adjust MH from 113.41 to 113.55
 See Sh. No. U12 & U13

Sta. 52+25 Remove
 Inlet, 25' LL

Sta. 52+60, 21' LL
 Install 31 L.F.
 4" PVC Sleeve

Const. 72 S.Y.
 7" V.G. w/ 5" Crushed
 Rock Base and Fabric
 Reinforcement (51 L.F.
 Monolithic Edge Curb)

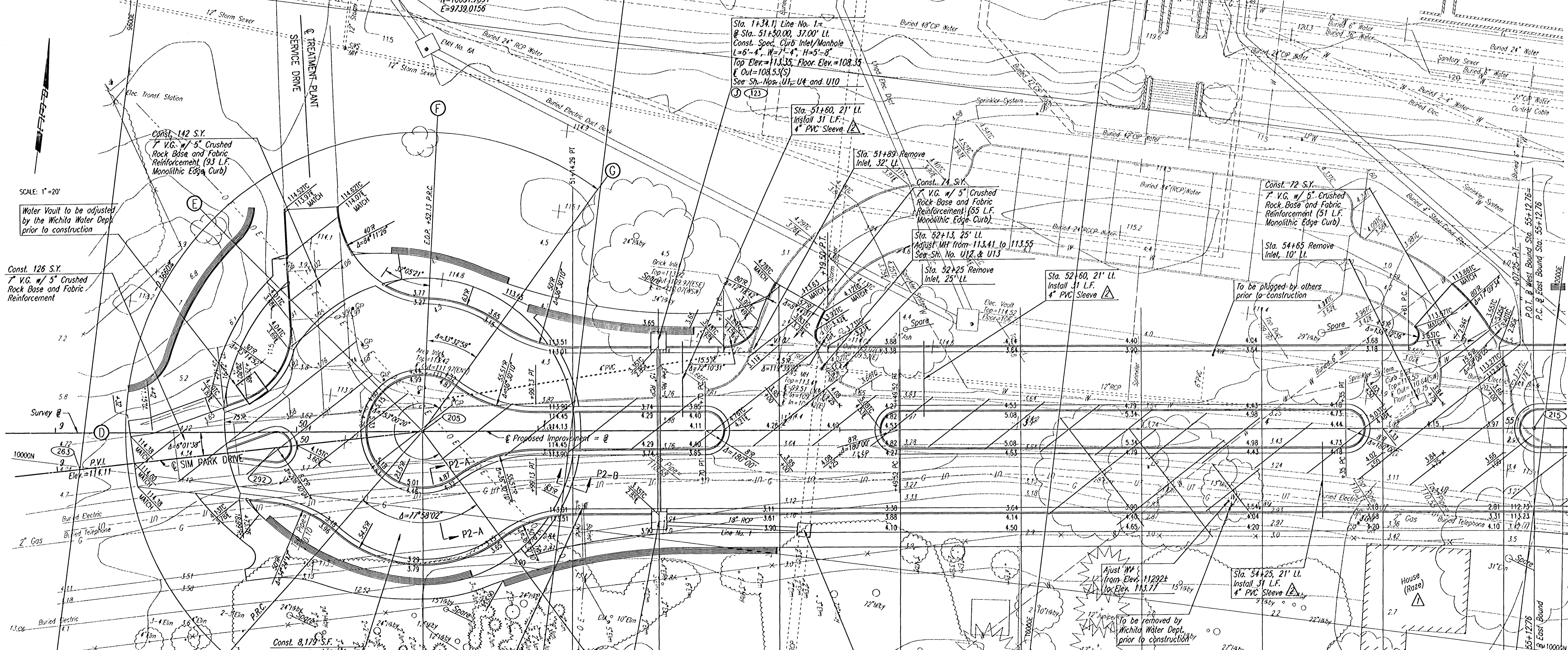
Sta. 54+65 Remove
 Inlet, 10' LL

To be plugged by others
 prior to construction

Sta. 54+25, 21' LL
 Install 31 L.F.
 4" PVC Sleeve

Adjust MH
 from Elev. 11292±
 to Elev. 113.77

To be removed by
 Wichita Water Dept.
 prior to construction



SCALE: 1"=20'

Water Vault to be adjusted
 by the Wichita Water Dept.
 prior to construction

Const. 126 S.Y.
 7" V.G. w/ 5" Crushed
 Rock Base and Fabric
 Reinforcement

Const. 142 S.Y.
 7" V.G. w/ 5" Crushed
 Rock Base and Fabric
 Reinforcement (93 L.F.
 Monolithic Edge Curb)

Const. 8,179 S.F.
 Concrete Block Pavers

PLAN	SURVEYED	DATE
NOTE BOOK	BY	
ALIGNMENT CHECKED		
RT. OF WAY CHECKED		